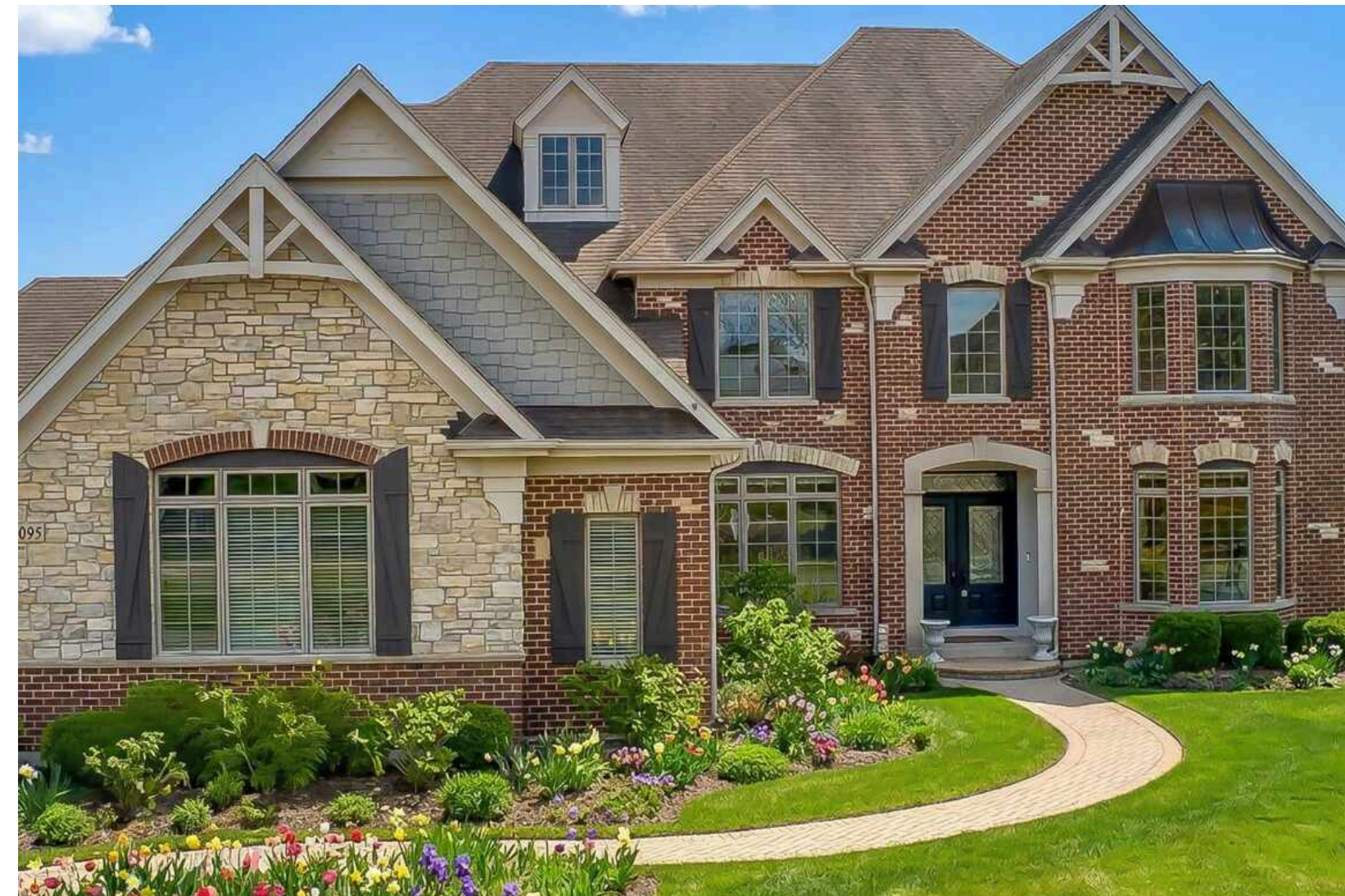




5N095 PRAIRIE ROSE DRIVE · ST. CHARLES



5N095 PRAIRIE ROSE DRIVE · ST. CHARLES

@properties | CHRISTIE'S
INTERNATIONAL REAL ESTATE

LP LUXURY
PORTFOLIO
INTERNATIONAL



DALIA METZGER BROKER

1 6305384361 mobile
630.377.1700 office
daliamezger@atproperties.com
daliamezger.com

DM
DALIA METZGER

5N095 PRAIRIE ROSE DRIVE • ST. CHARLES



@properties | CHRISTIE'S
INTERNATIONAL REAL ESTATE

LP LUXURY
PORTFOLIO
INTERNATIONAL



5N095 PRAIRIE ROSE DRIVE PRAIRE LAKES

ROOM DIMENSIONS

Living Room	14'x13'
Dining Room	15'x12'
Family Room	23'x21'
Office	13'x12'
Kitchen	22'x21'
Laundry Room	11'x8'
Mud Room	17'x7'
Primary Bedroom	24'x22'
2nd Bedroom	24'x22'
3rd Bedroom	16'x14'
4th Bedroom	14'x12'
Bedroom Lower Level	20'x16'
Family Rm Lower Level ...	23'x20'
Kitchenette Lower Level ...	20'x9'
Laundry Room Lower Level	8'x8'
Storage Lower Level	27'x13'

FEATURES

You won't want to miss this Prairie Lakes showstopper, where luxury living, thoughtful design, and refined finishes come together seamlessly. Perfectly positioned on a ¾-acre lot backing to serene open space, this exceptional custom home offers privacy, tranquil views, and a true sense of retreat, while providing over 7,100 square feet of finished living space ideal for everyday living and entertaining. Built by Southampton and recently refreshed inside and out, the home delivers a polished, move-in-ready experience. Anchoring the main level is a grand entertainer's kitchen featuring multiple oversized islands, expansive prep space, abundant cabinetry, and a generous dining area. The kitchen opens effortlessly to the main family room, creating a dramatic and inviting gathering space framed by picturesque natural views. The flexible floor plan offers five bedrooms, with the option for a sixth by converting the main-level office. The fully finished walk-out lower level includes a spacious bedroom with an oversized closet, full bath, laundry room, and a kitchenette—ideal for guests, entertaining, or live-in arrangements—along with a large family room centered around a warm, inviting fireplace. Upstairs, the primary suite is a luxurious retreat with a dramatic fireplace, custom built-ins, a sitting area, and a newly designed oversized walk-in closet. Bedroom two features a private ensuite, while bedrooms three and four share a Jack-and-Jill bath, with walk-in closets and ample storage throughout. The outdoor setting offers peaceful nature views and an ideal backdrop for future outdoor living. Just minutes from downtown St. Charles, the Fox River, shopping, dining, and entertainment - and within highly acclaimed St. Charles District 303 schools.



DALIA METZGER BROKER

1 6305384361 mobile
630.377.1700 office

daliаметzger@atproperties.com
daliаметzger.com



























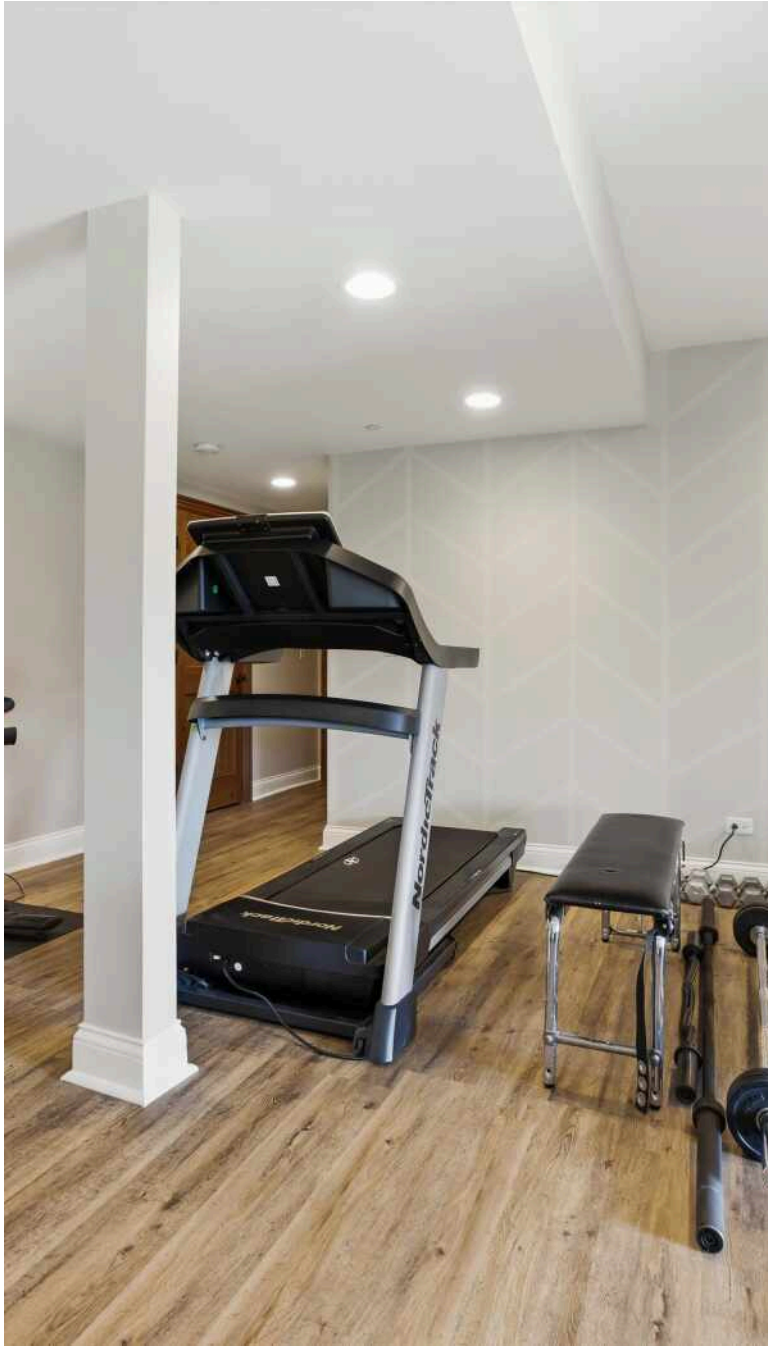




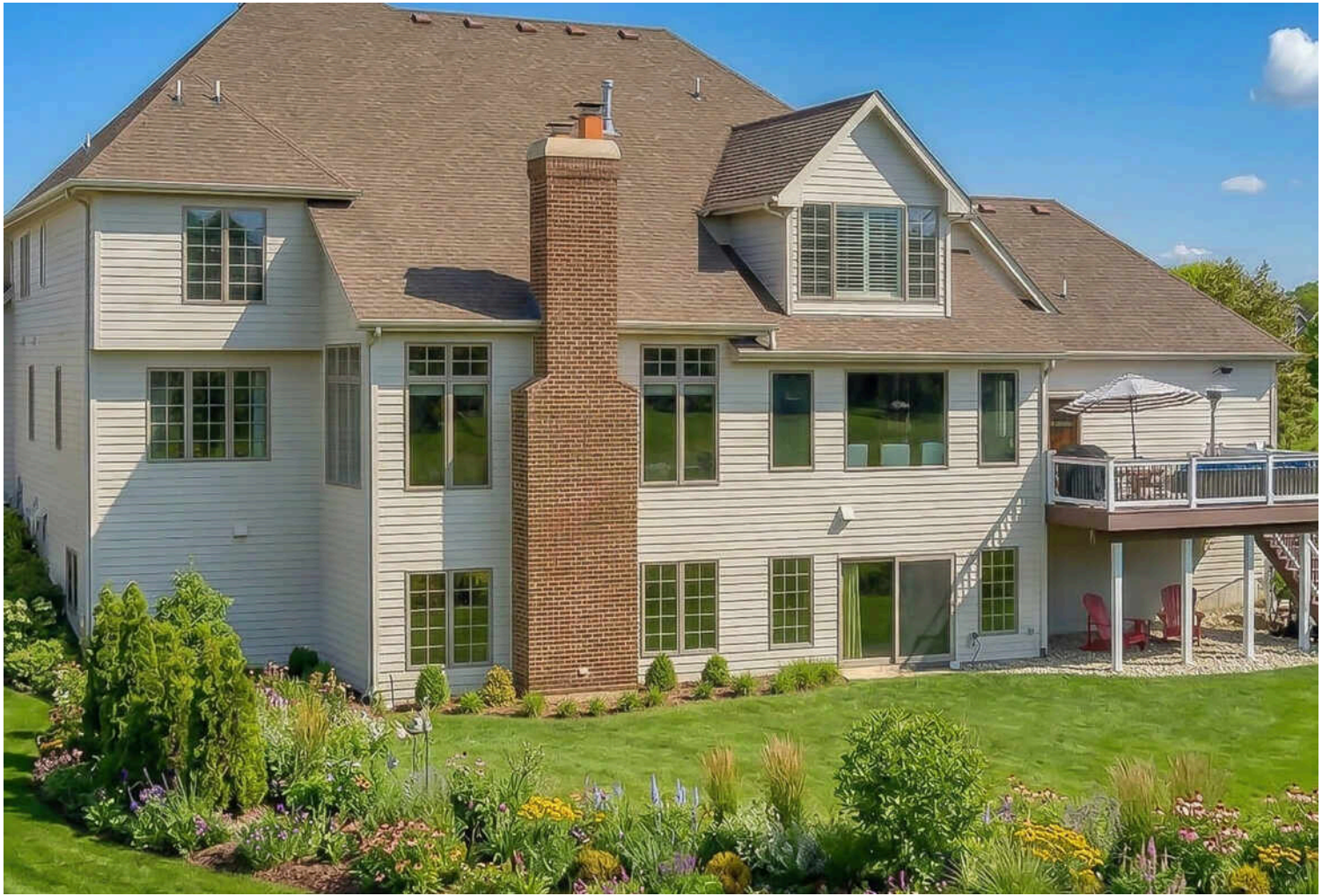












@properties® | CHRISTIE'S
INTERNATIONAL REAL ESTATE

Leading REAL ESTATE
COMPANIES
OF THE WORLD®

LP
LUXURY
PORTFOLIO
INTERNATIONAL

