

5 EAST 14TH PLACE #1405
SOUTH LOOP





ROOM DIMENSIONS

FOYER : 10' × 7'

LIVING ROOM : 23' × 17'

KITCHEN : 13' × 8'

PRIMARY BEDROOM : 15' × 12'

WALK IN CLOSET : 7' × 4'

SECOND BEDROOM : 12' × 10'

LAUNDRY IN- UNIT : 3' × 3'

BALCONY : 20' × 6'

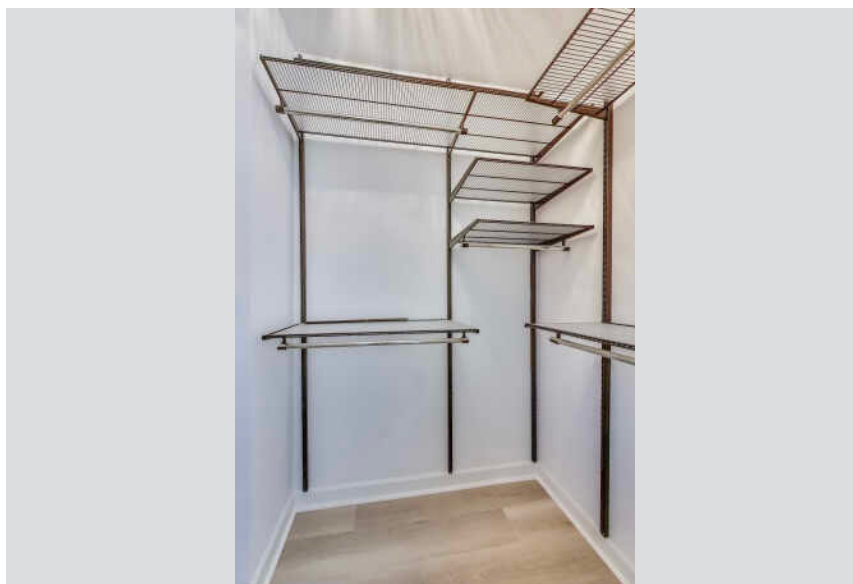
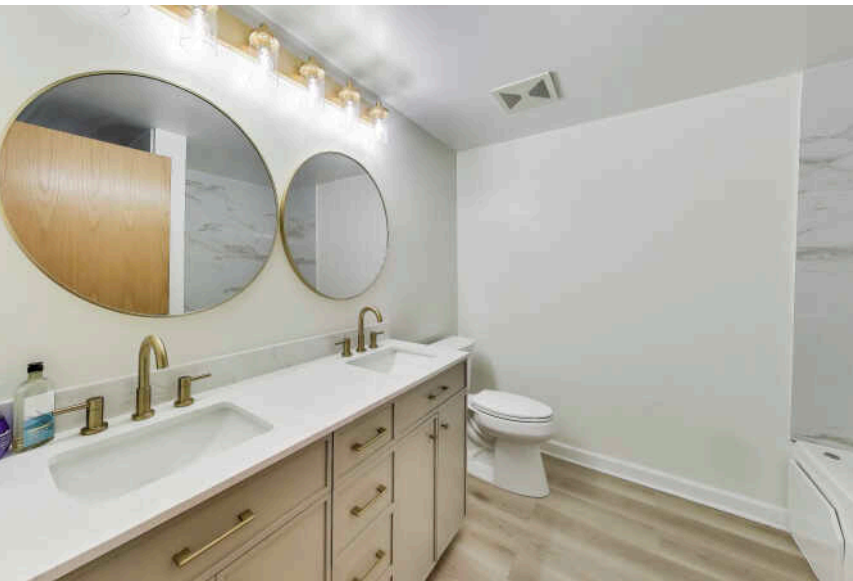
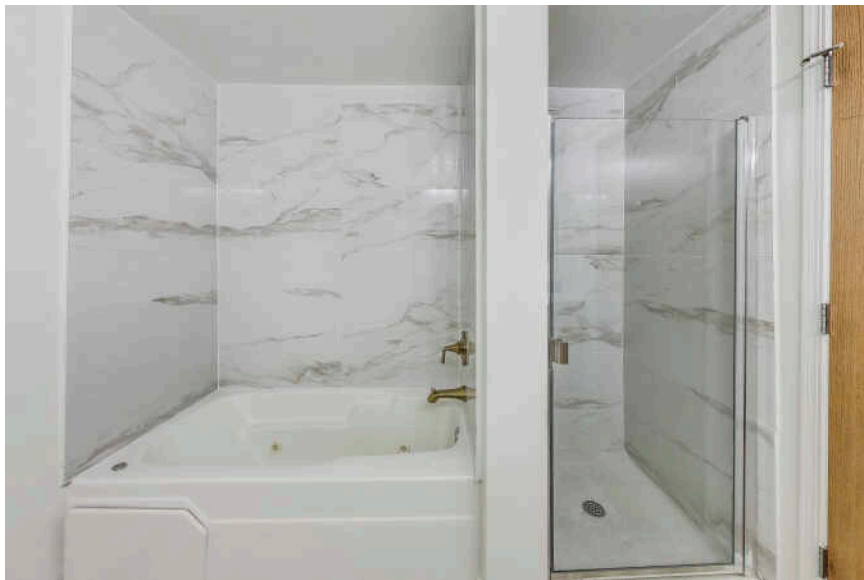
2 BEDROOM

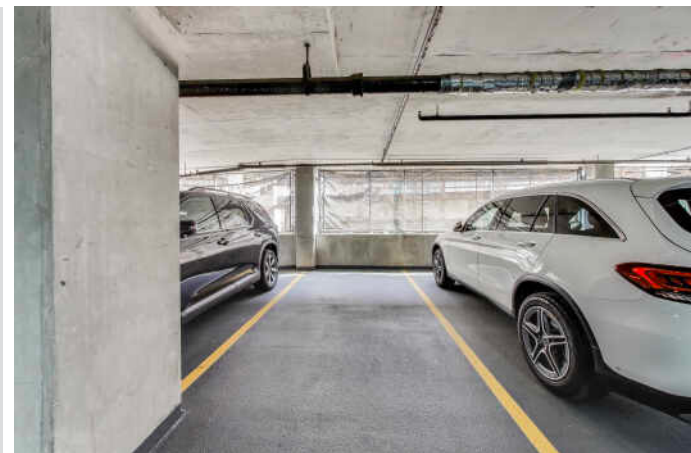
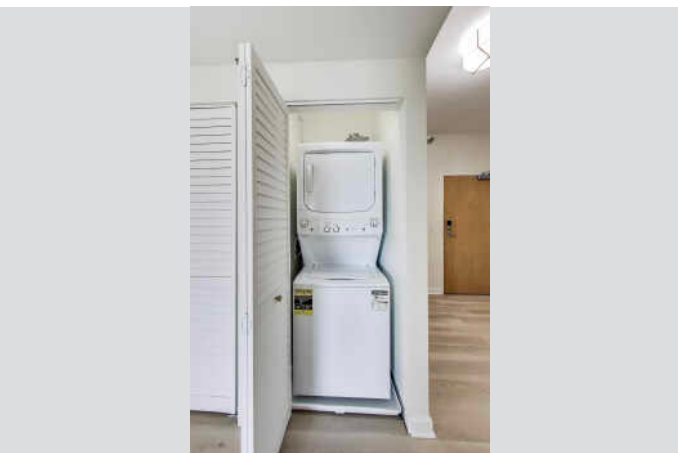
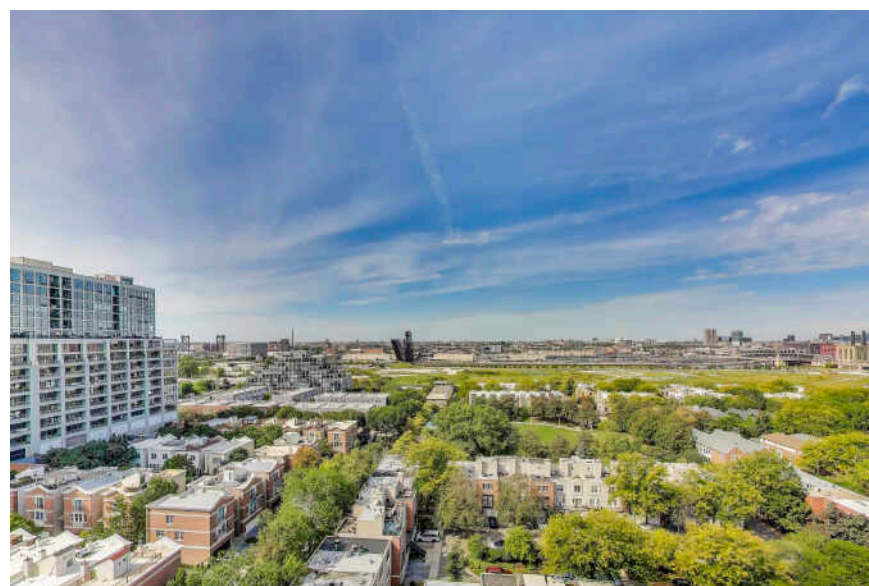
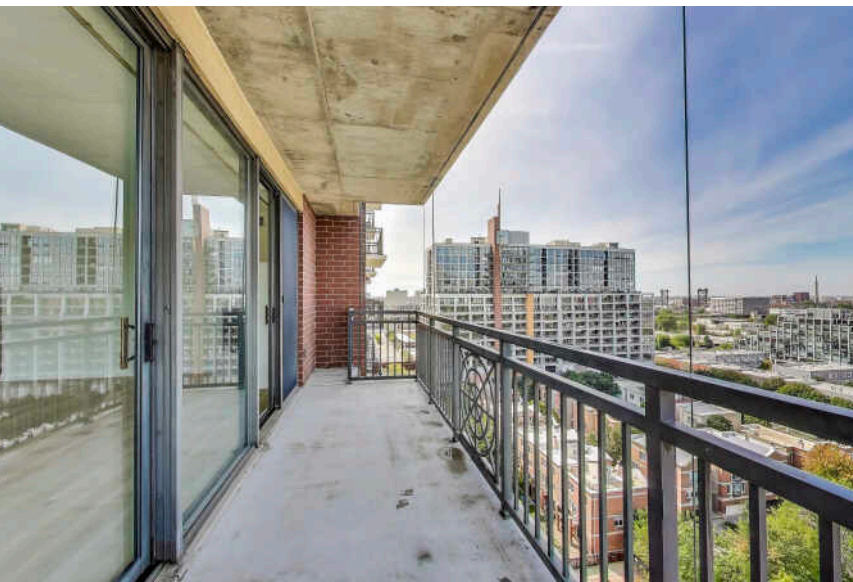
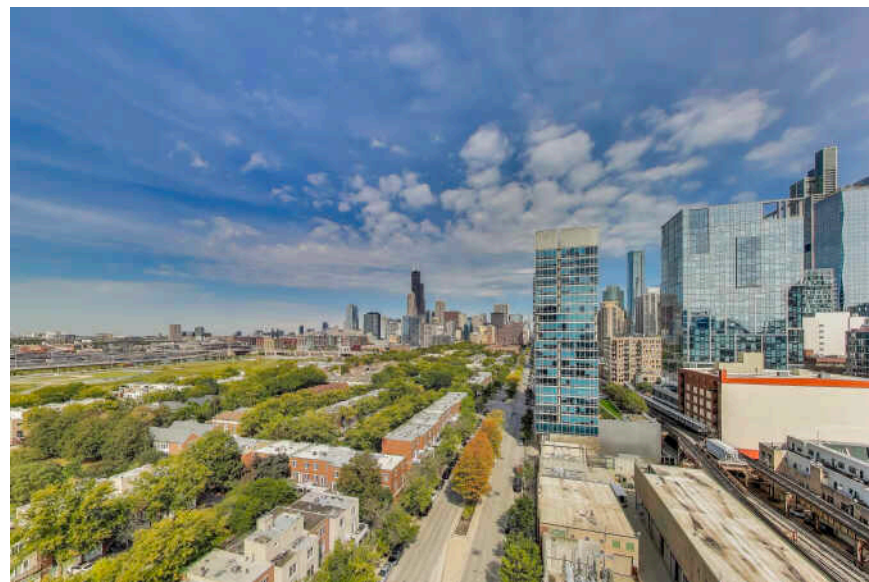
2 BATH

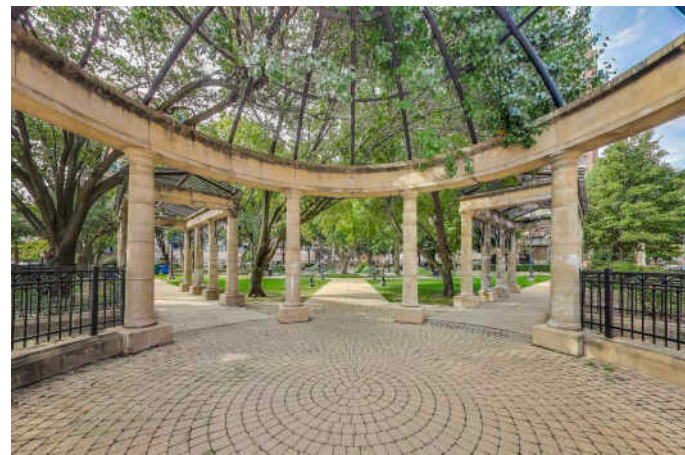
HELLO, SOUTH LOOP.

Bright and spacious city facing 2 bedroom, 2 bathroom with stunning views and a large private balcony, in-unit laundry and garage parking included. Open layout with new luxury waterproof vinyl flooring. The kitchen includes new quartz counters, stainless steel appliances, modern white penny backsplash, gold hardware and cabinet pulls, white cabinets, and sleek linear globe chandelier lighting. The living and dining area features a ventless fireplace and great natural light. The primary suite offers skyline views, a large walk-in closet with organizers, and a spa-style bath with a new moren slim-shaker double vanity, frameless mirror, soaking tub, and separate shower. The second bedroom is generously sized with closet organizers as well. As you can see, recent updates include: kitchen, bathrooms, all flooring, lighting, and fresh paint throughout. Full-amenity building with maintenance, management, and gym. Unbeatable location in the South Loop Elementary school district and near all that we love about the South Loop: parks, transit, grocery, and dining. The rent includes parking, water, cable, and internet.









1306 sq ft + 89 sq ft BALCONY



CHARACTERIZED BY TOWERING HIGH RISES AND HISTORIC POCKETS THAT REFLECT THE AREA'S STORIED PAST, THE **SOUTH LOOP** IS A DISTINCTIVE CHICAGO NEIGHBORHOOD.

Chicago's original Gold Coast in the late 19th century, the South Loop was once home to the likes of Marshall Field, George Pullman, and Philip Armour. Today the vibrant neighborhood is known for its access to the lakefront, shops, restaurants, parks, Museum Campus, and The Loop.

The South Loop is comprised of several historic areas including Printer's Row, which features a number of buildings that have been converted into residential lofts, along with Motor Row District and Prairie Avenue District. Meanwhile, several apartment and condominium buildings are under construction, bringing thousands of new residences to the neighborhood.

The South Loop's housing boom has brought with it an influx of retailers along with eateries and nightlife on South Michigan Avenue. The Roosevelt Collection is a popular destination featuring a movie theater and an assortment of retailers.

Museum Campus is the cultural hub of the South Loop featuring attractions including the Field Museum, Shedd Aquarium, Adler Planetarium, and Soldier Field. Residents also enjoy being in close proximity to Northerly Island and public transportation including the CTA's Roosevelt station.



- COFFEE _____

- ### 3 Kung Fu Tea

-  GROCERY_____

- ## 2 Trader Joe's

- GYM _____

- ENTERTAINMENT WEEKLY 11

- 

- 
- PARKS _____

- 
- SERVICES _____

- 1 United States Postal Service
2035 SOUTH STATE STREET, 0.5 MI

[illegible]



NAJA MORRIS

(312) 206-4587

NAJA@NAJAMORRIS.COM



All specifications, features, designs, price, assessments, taxes and materials are subject to change without notice. Depicted floor plans and architectural renderings are only an artist's impression.

