

5 E 14TH PLACE #501
SOUTH LOOP





ROOM DIMENSIONS

LIVING ROOM : 19' × 16'

KITCHEN : 13' × 8'

PRIMARY BEDROOM : 16' × 12'

SECOND BEDROOM : 11' × 14'

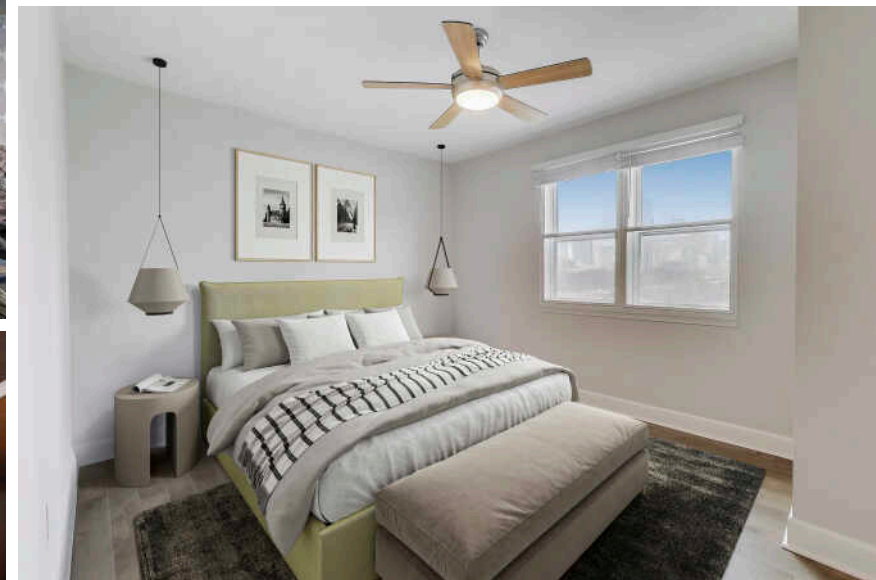
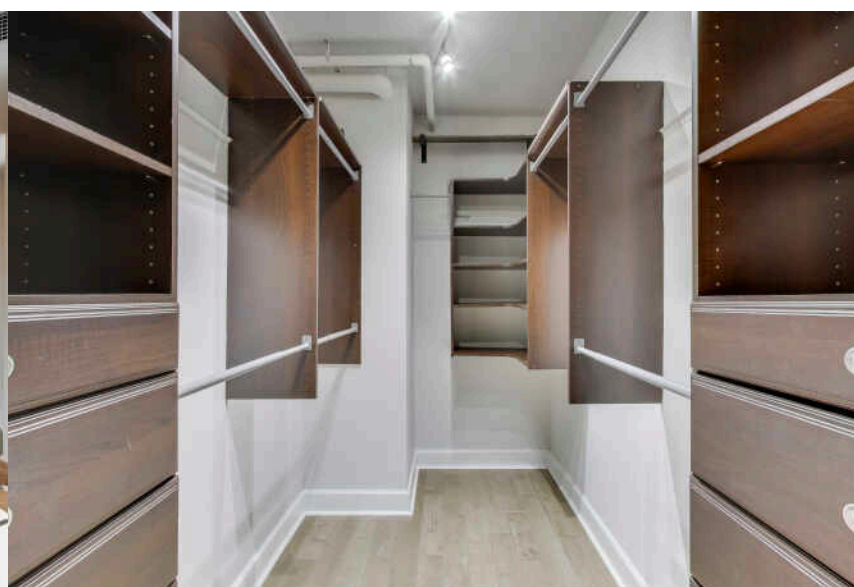
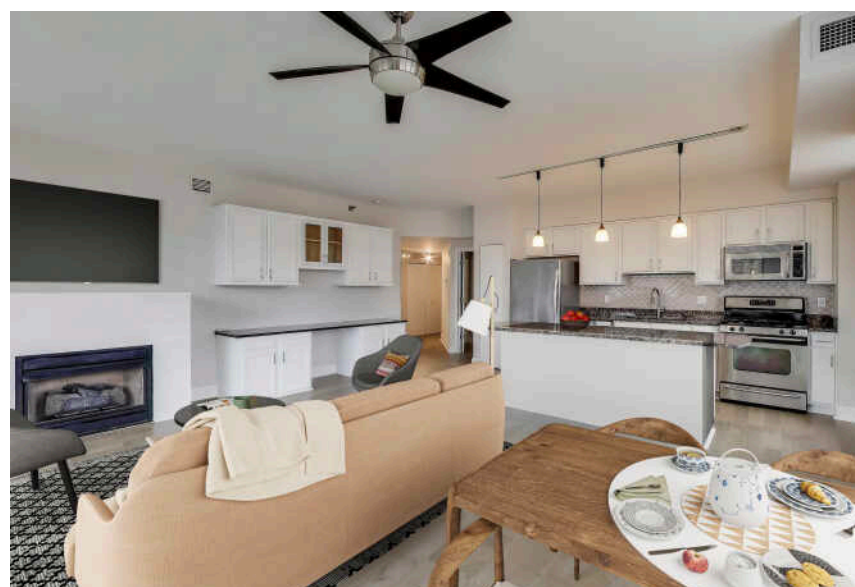
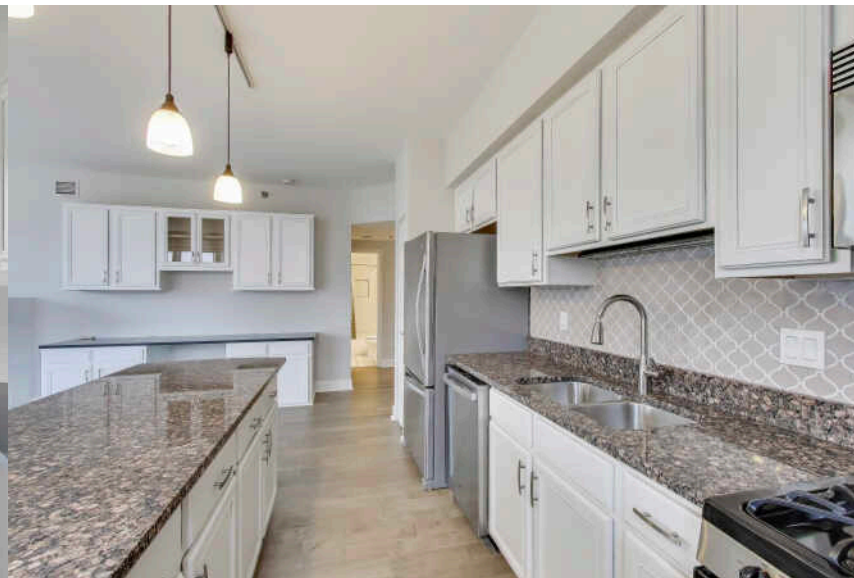
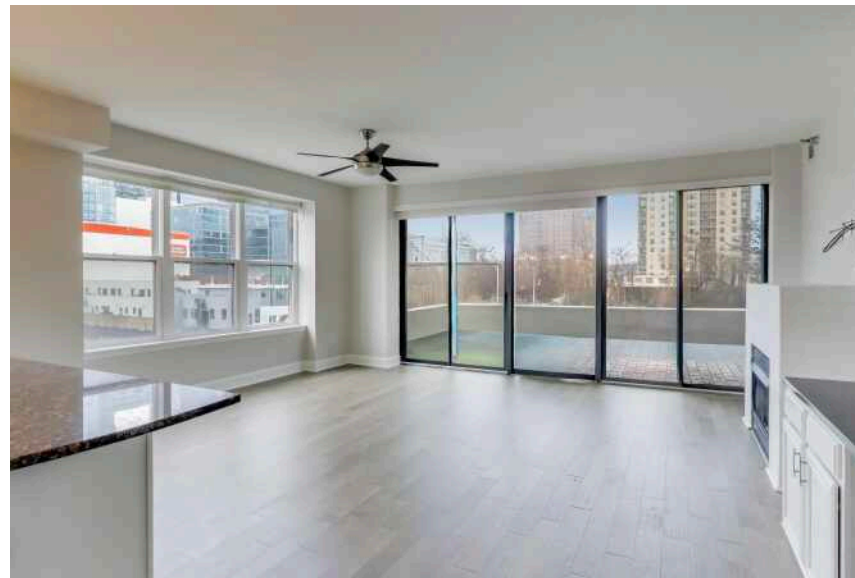
2 BEDROOM

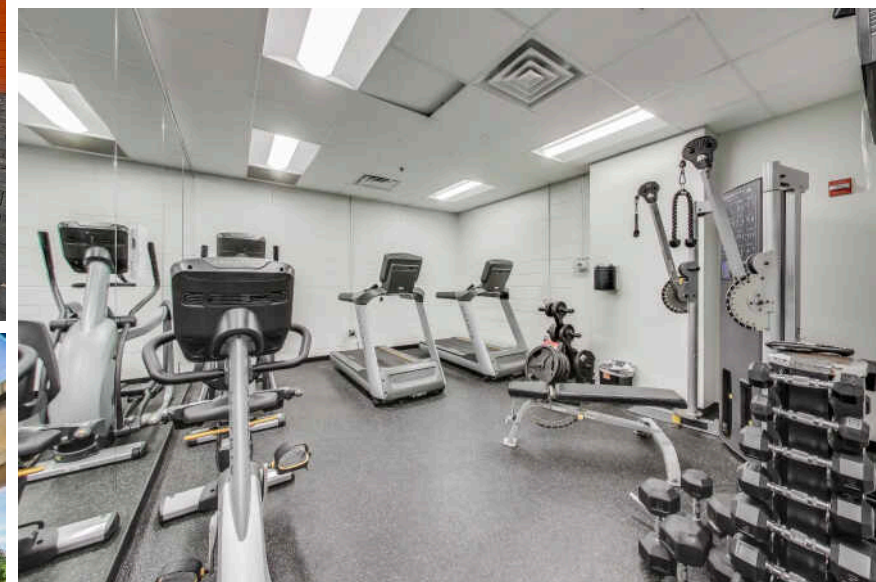
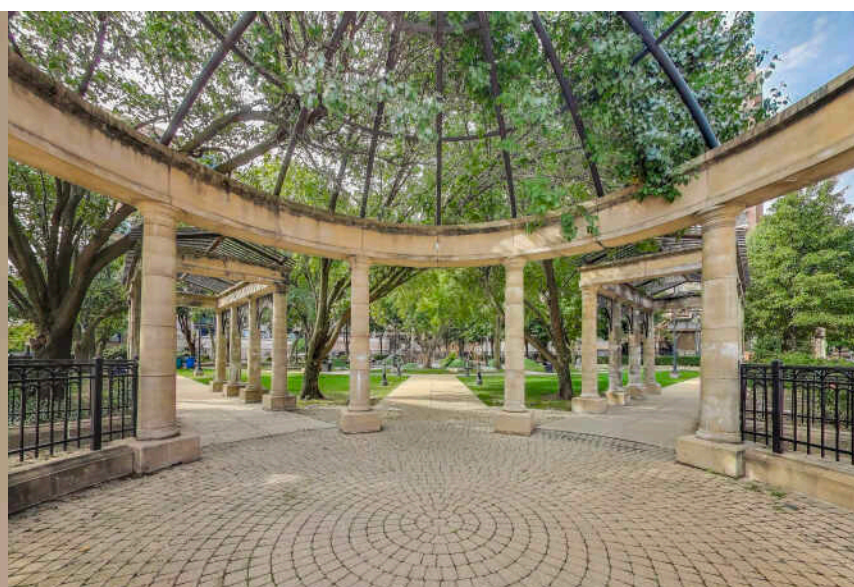
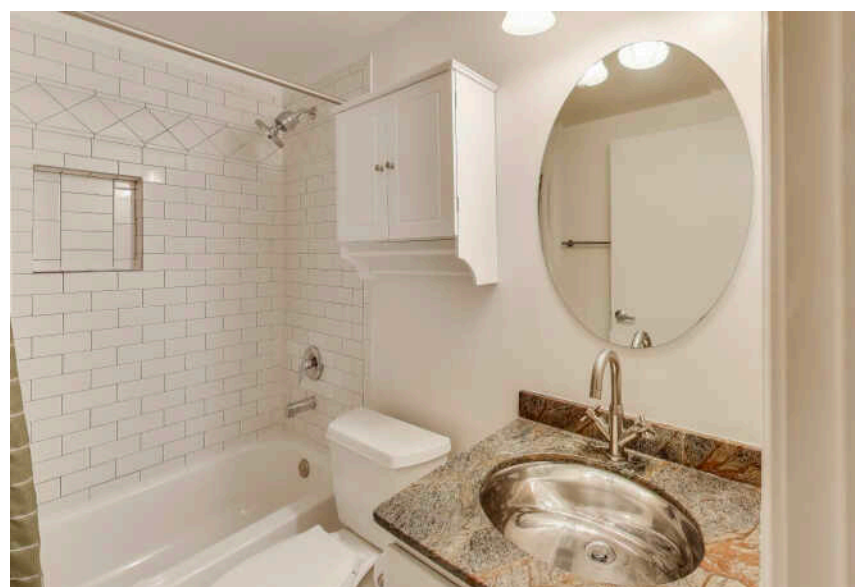
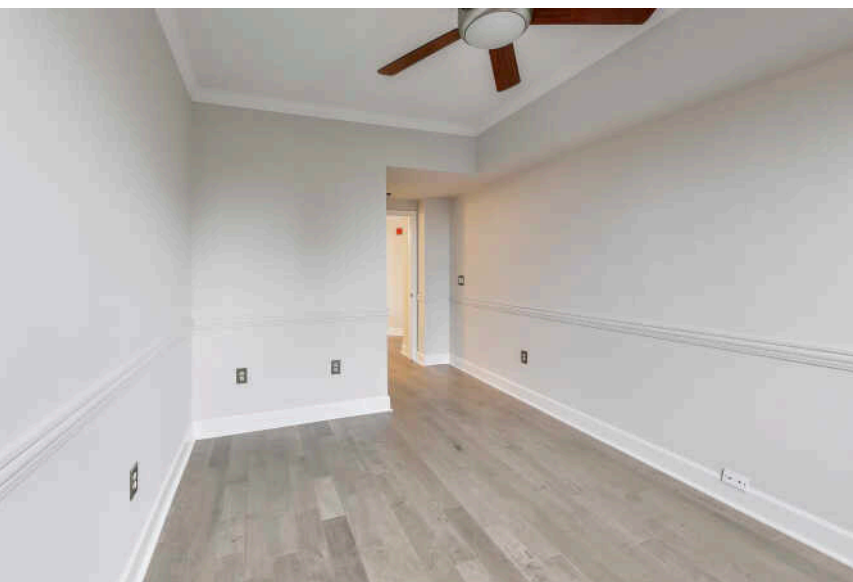
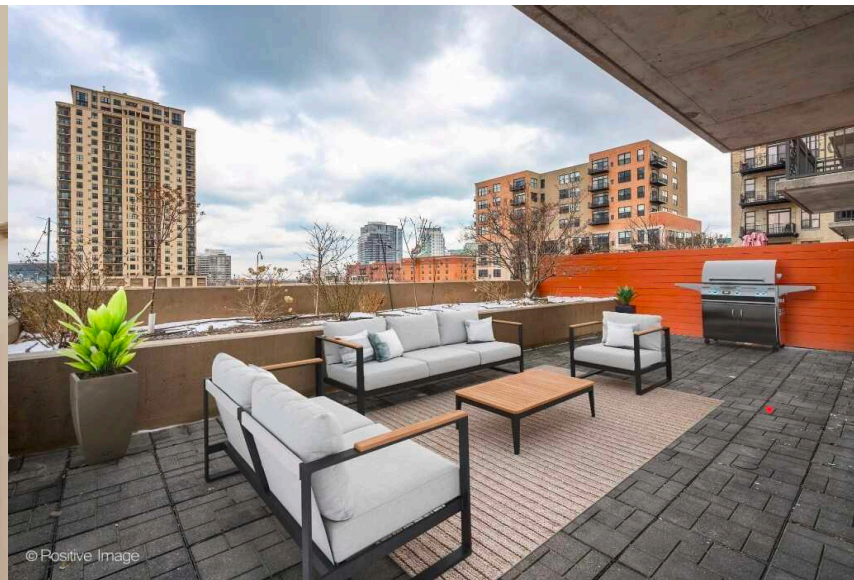
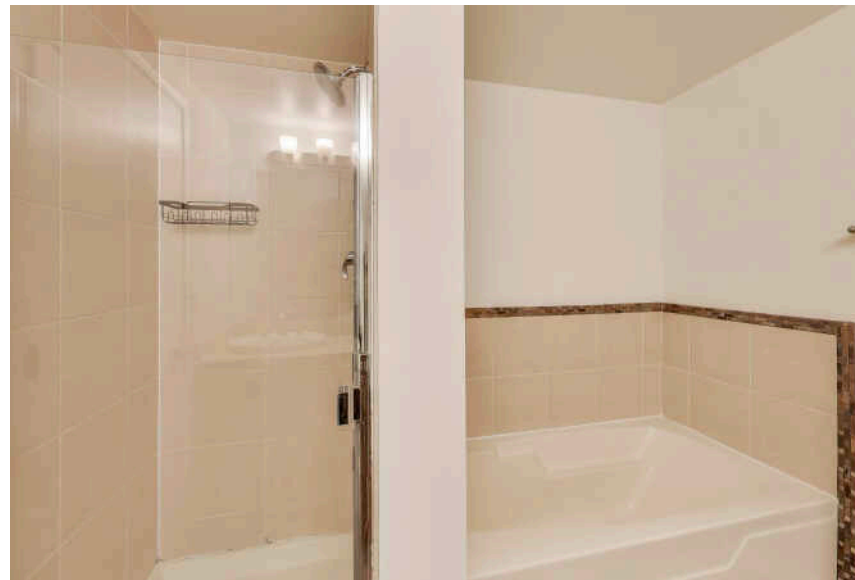
2 BATH

TAXES: \$7,308

ASSESSMENTS: \$898 / MONTH

Elevated views meet elevated living in this beautifully refreshed Northeast corner home, showcasing sweeping views from every room-plus a rare, fully private 20' x 30' terrace that truly sets this residence apart. This spacious 2 bed / 2 bath residence has been thoughtfully updated throughout with brand-new luxury wood laminate flooring, fresh paint, updated lighting, and subtle design enhancements that create a clean, modern aesthetic. The open-concept living and dining area offers a warm, functional layout anchored by a gas fireplace and a versatile built-in nook ideal for a home office or bar. Floor-to-ceiling windows and direct access to the expansive terrace provide a seamless indoor-outdoor flow perfect for entertaining. The updated kitchen features white cabinetry, granite countertops, stainless steel appliances, a generous island, and abundant storage. Both bedrooms are oversized, including a serene primary suite with dual vanities, a jacuzzi tub, and a separate walk-in shower. Additional conveniences include an in-unit laundry closet with a full-size washer/dryer and extra building storage. Residents enjoy a well-managed, full-amenity community offering door staff, a fitness room, bike storage, dog run, and additional storage. Ideally located in the South Loop, you're steps from restaurants, bars, grocery shopping, museums, Grant Park, Soldier Field, the lakefront, the CTA Red/Orange/Green lines, and countless other conveniences. Indoor heated garage parking available for \$25k.







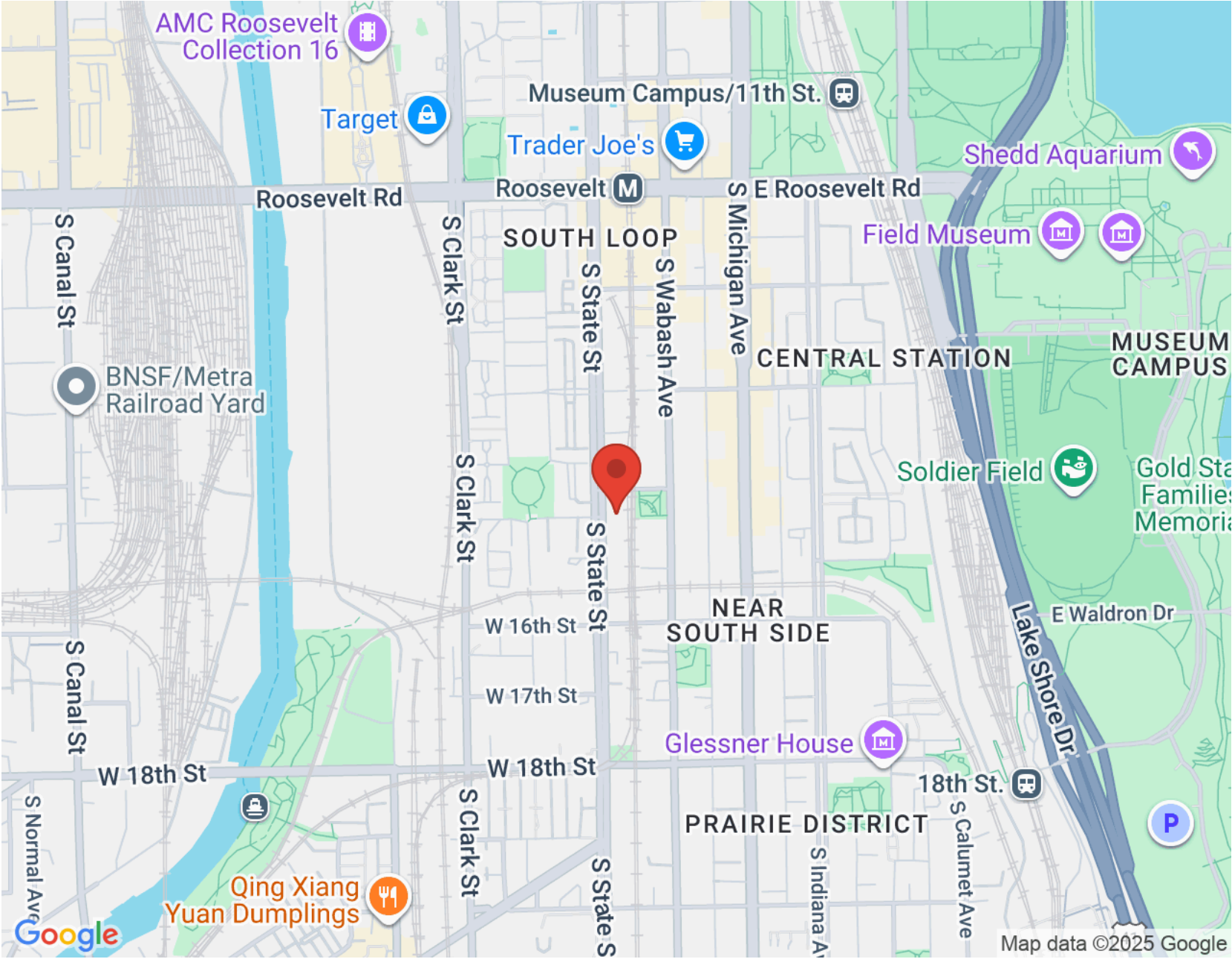
CHARACTERIZED BY TOWERING HIGH RISES AND HISTORIC POCKETS THAT REFLECT THE AREA'S STORIED PAST, THE **SOUTH LOOP** IS A DISTINCTIVE CHICAGO NEIGHBORHOOD.

Chicago's original Gold Coast in the late 19th century, the South Loop was once home to the likes of Marshall Field, George Pullman, and Philip Armour. Today the vibrant neighborhood is known for its access to the lakefront, shops, restaurants, parks, Museum Campus, and The Loop.

The South Loop is comprised of several historic areas including Printer's Row, which features a number of buildings that have been converted into residential lofts, along with Motor Row District and Prairie Avenue District. Meanwhile, several apartment and condominium buildings are under construction, bringing thousands of new residences to the neighborhood.

The South Loop's housing boom has brought with it an influx of retailers along with eateries and nightlife on South Michigan Avenue. The Roosevelt Collection is a popular destination featuring a movie theater and an assortment of retailers.

Museum Campus is the cultural hub of the South Loop featuring attractions including the Field Museum, Shedd Aquarium, Adler Planetarium, and Soldier Field. Residents also enjoy being in close proximity to Northerly Island and public transportation including the CTA's Roosevelt station.



NOTES _____



GUIDO PIUNTI

(312) 983-2630

GUIDO@ATPROPERTIES.COM

GUIDOSELLSCHICAGO.COM



All specifications, features, designs, price, assessments, taxes and materials are subject to change without notice. Depicted floor plans and architectural renderings are only an artist's impression.

