

5 E LAKE FRONT DRIVE BEVERLY SHORES



@properties | CHRISTIE'S
INTERNATIONAL REAL ESTATE

LUXURY
PORTFOLIO
INTERNATIONAL



TAMI BIANCO BROKER

219.508.9703 mobile
219.531.2288 office
tamibianco@atproperties.com
www.atproperties.com/site/TamiBianco

5 E LAKE FRONT DRIVE • BEVERLY SHORES





5 E LAKE FRONT DRIVE

FEATURES

SWEEPING VIEWS OF LAKE MICHIGAN FOR THIS OASIS ON TOP OF A SAND DUNE! This three-bedroom, 2.5-bath home with a two-car heated garage is a peaceful retreat; however, this home also has a great open floor plan for entertaining! Two-story Living and Dining rooms with hand-scraped hardwood floors, built-in shelving, recessed lighting, and a wall of north windows and doors frame that lake view! Wood-burning fireplace in the Living Room for those chilly fall months. Updated Kitchen with granite countertops, stainless steel Wolf Range, Sub Zero Refrigerator, and two-drawer Fisher Paykel Dishwasher. Square Island Breakfast Counter with granite tops and under-the-counter wine cooler. The main floor has three seasons room and a half guest bath that complete this floor. Upstairs are the Primary Bedroom, Bedroom 2, and Full Bath. A lower walk-out Basement with Bedroom 3, a full bath, and a screen porch is ideal for related living: 37 x 18 composite upper deck, outdoor shower, and outdoor kitchen in the rear.

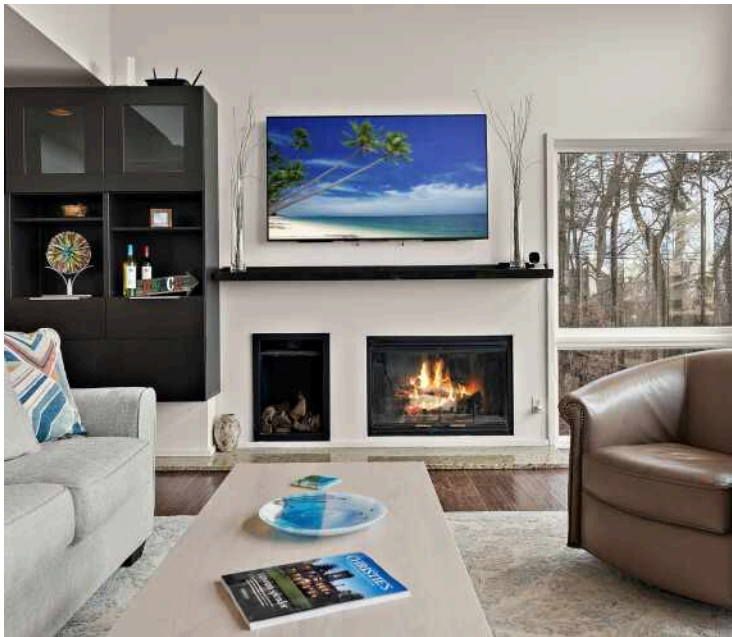


TAMI BIANCO BROKER

219.508.9703 mobile
219.531.2288 office

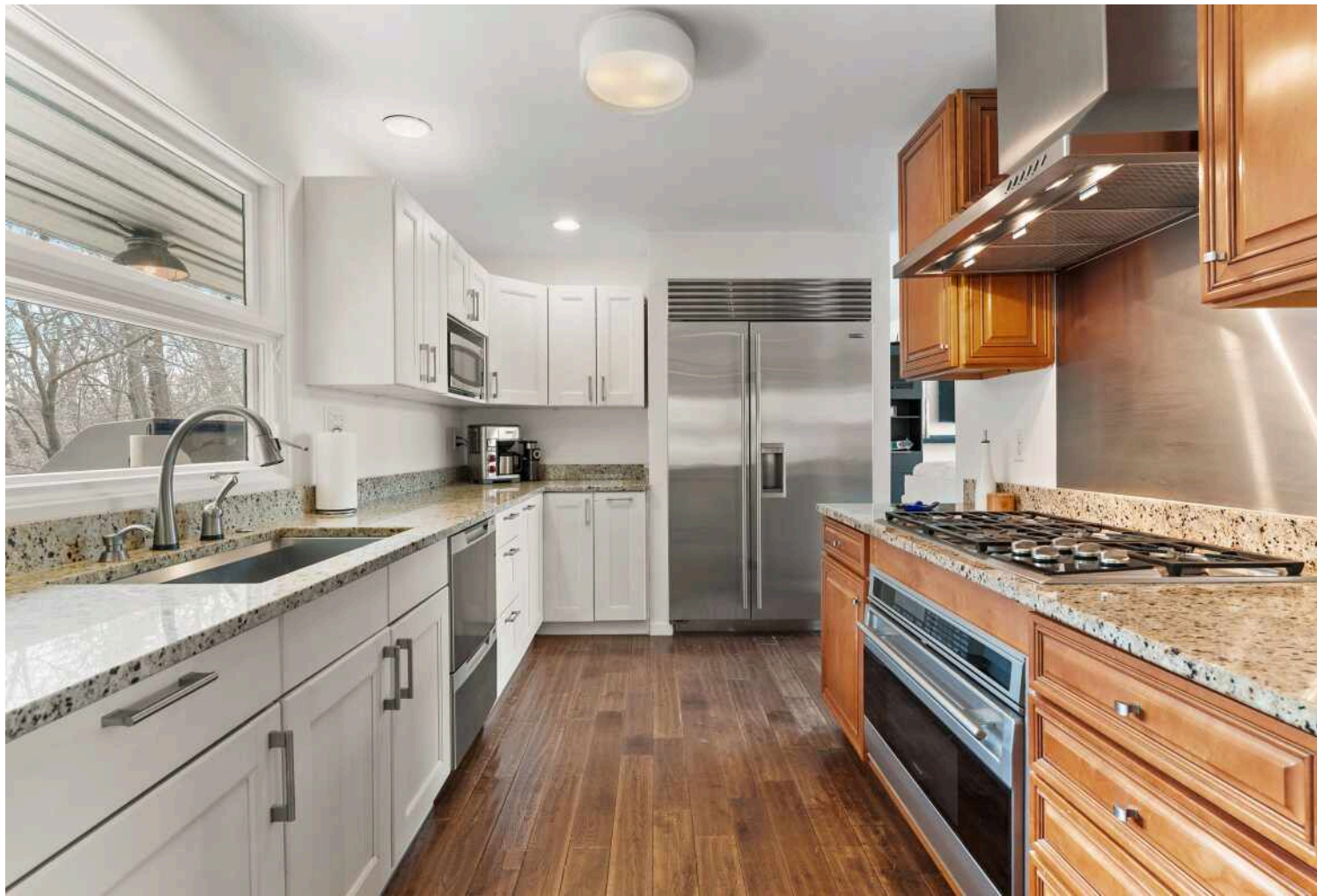
tamibianco@atproperties.com
www.atproperties.com/site/TamiBianco





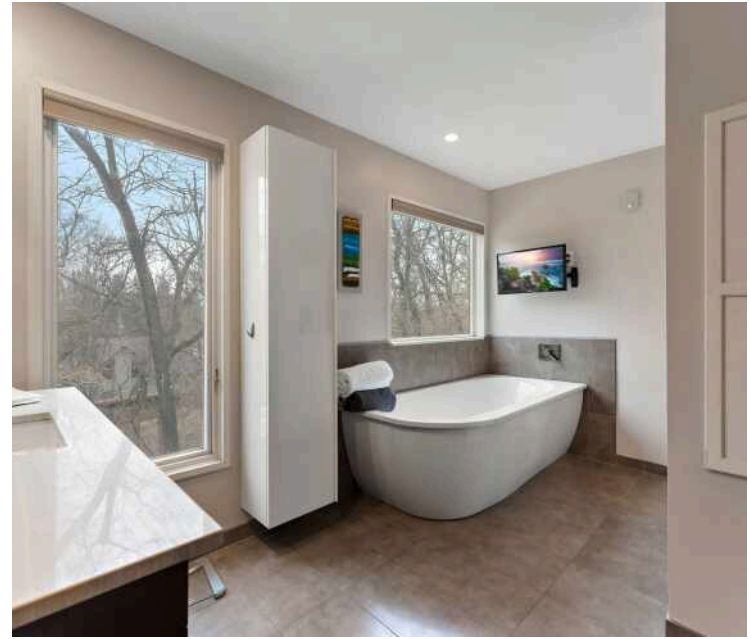




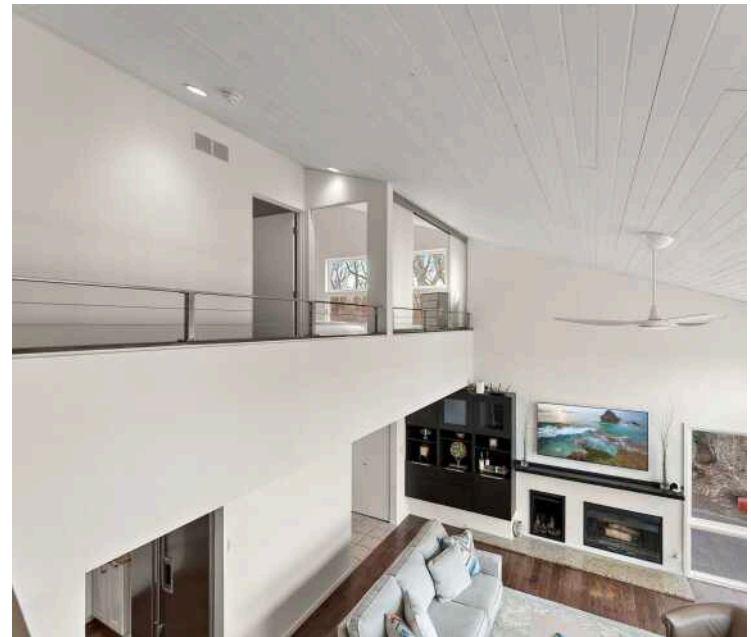
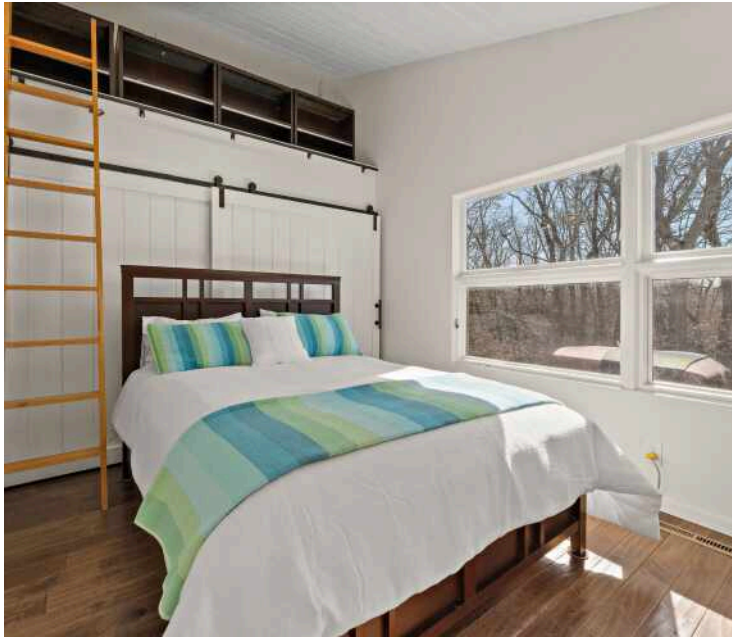




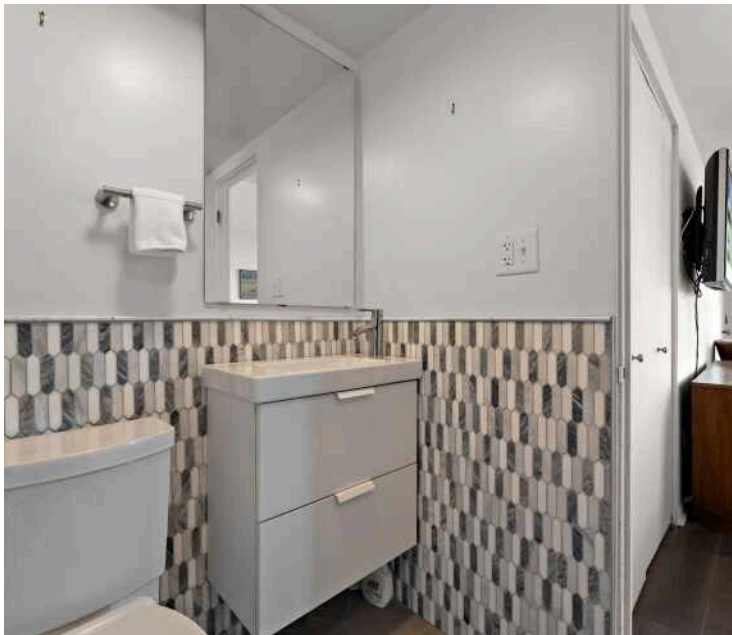




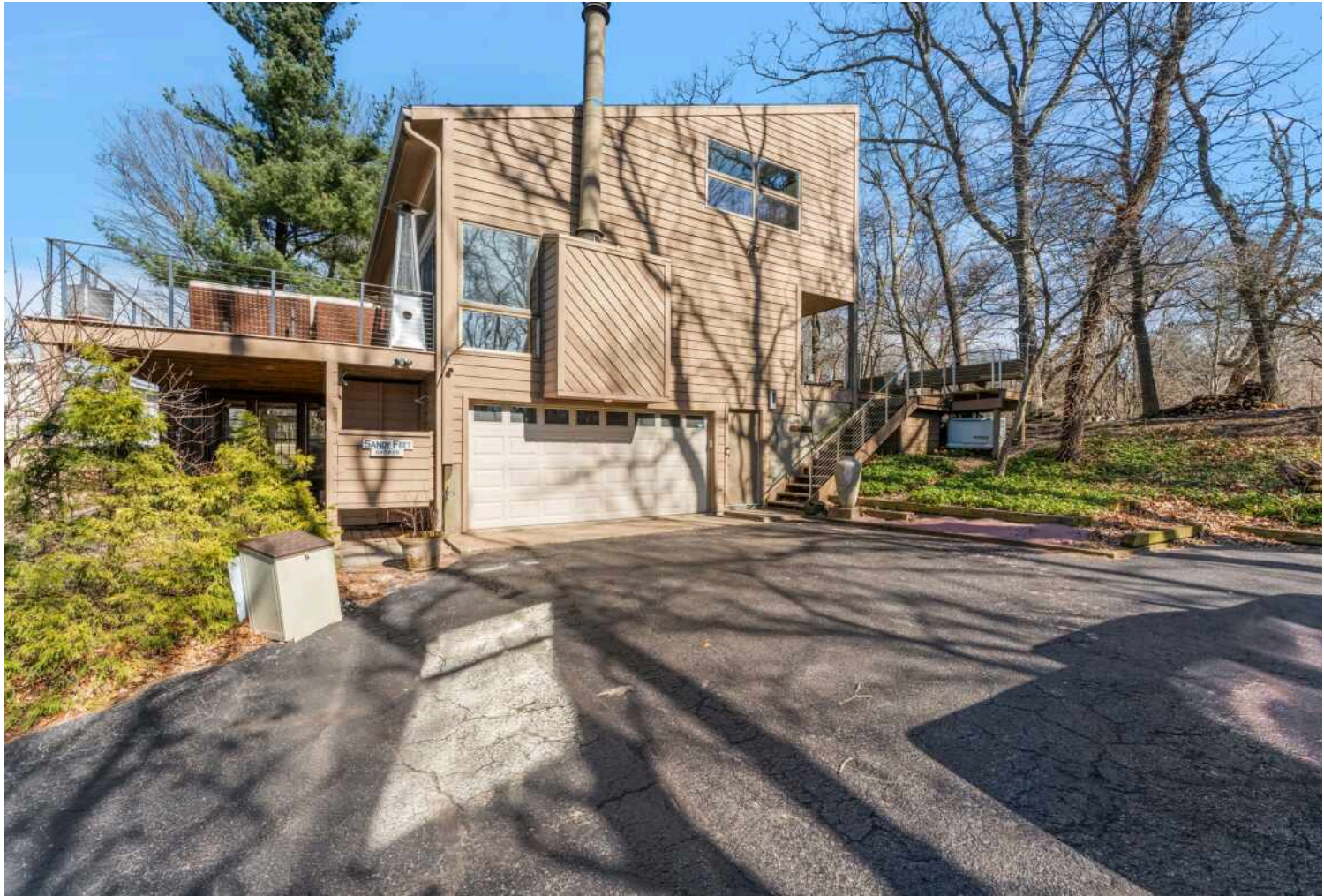






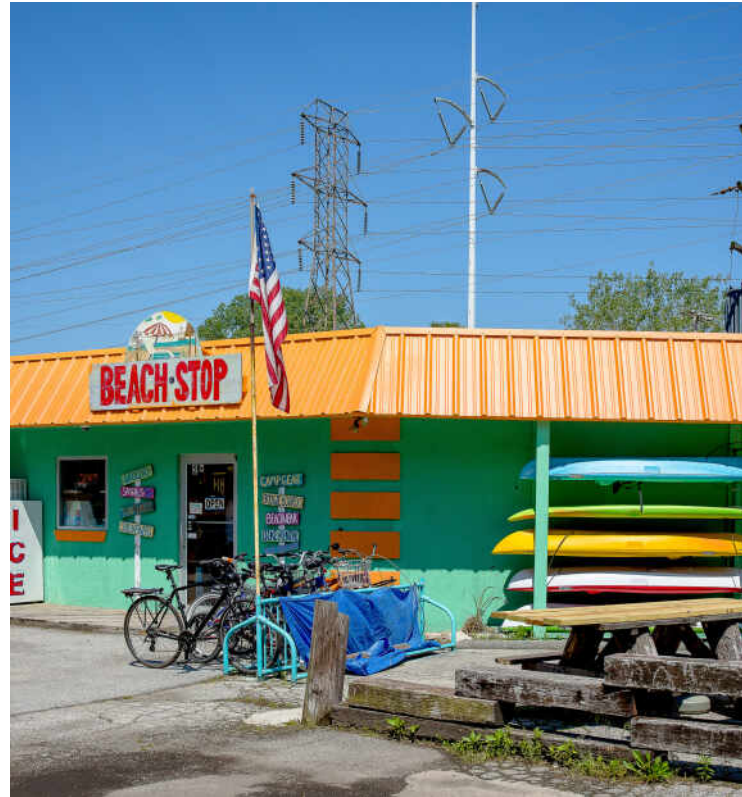












SUNNY BEACHES BY DAY; STARRY SKIES BY NIGHT. WELCOME TO **BEVERLY SHORES.**

Locals love the natural beauty of Beverly Shores' beaches and marshlands. Bird watchers and cyclists are particularly drawn to this beachfront community.

Originally designed as a resort community, Beverly Shores is just a train ride away from Chicago via the South Shore Line. The town is known locally as “The Island” as it is located along the Lake Michigan shoreline and surrounded by the Indiana Dunes National Park to its east, west, and south.

Beverly Shores has a unique history. In 1927, Chicago real estate developer Frederick H. Bartlett purchased over 3,000 acres of land and began developing the area. Then in the 1930s, Bartlett’s brother purchased 16 structures from the Chicago World’s Fair and moved them to Beverly Shores. Five of the structures still stand within the Indiana Dunes National Park.

Today, Beverly Shores is a haven for nature lovers, cyclists, bird watchers, and beachgoers. Visitors and residents alike enjoy the area’s natural beauty, and many Chicagoans make the community their second home.

Beverly Shores’ renovated train station is on the National Register of Historic Places and is home to a museum, gallery, and local art exhibits.

Local housing options range from classic and contemporary single-family homes with lush landscaping to million-dollar homes on the dunes near the lakefront.





