

2243 WOODLAWN ROAD
NORTHBROOK





FOYER

2243 WOODLAWN ROAD SENSATIONAL, CUSTOM ALL-BRICK & STONE HOME ON PROFESSIONALLY LANDSCAPED HALF ACRE

ROOM DIMENSIONS

Foyer.....	22' x 16'
Living Room.....	16' x 13'
Dining Room.....	17' x 13'
Kitchen.....	18' x 10'
Eating Area	21' x 16'
Family Room	27' x 19'
Library.....	16' x 12'
Laundry Room	13' x 07'
Master Bedroom.....	22' x 15'
2nd Bedroom	18' x 15'
3rd Bedroom.....	17' x 16'
4th Bedroom.....	17' x 13'
5th Bedroom.....	16' x 16'
6th Bedroom.....	16' x 14'
Sitting Room	21' x 17'
Game Room.....	30' x 26'
Media Room.....	21' x 17'
Recreation Room	30' x 27'
Theatre Room	20' x 16'
Bar.....	13' x 12'
Exercise Room.....	16' x 15'

FEATURES

This custom, newer 6,900 sqft home with 7+ bedrooms and 6.2 baths has been built with unsurpassed quality! From the exquisite all-brick and stone exterior with five fabulous outdoor entertaining areas, 4-car garage and sublime professional landscaping - to the best-of-the-best interior finishes including hardwood floors throughout, first and second floor master suites, front/back staircases, up/down laundries, bedrooms with private baths, bonus/media rooms and fantastic lower level including recreation, game, theater, sauna and two bedrooms--this home has it all! Nestled on a beautifully professionally landscaped .5 acre lot in a prestigious area filled with like-sized \$\$\$ estates, this beauty is just blocks to town, train and all three top-ranked public schools! The foyer features impressive floating staircase with nearby elegant living room and banquet-sized dining room with butler's pantry. Enormous gourmet kitchen with Wolf, SubZero and huge quartzite center island opens to the spectacular family/great room with soaring stone fireplace; French doors lead out to the fantastic outdoor living areas plus delightful screened-in porch with knotty-pine rotunda-like ceilings. Nearby is the library filled with custom bookshelves and striking coffered ceilings. There are a total of 7+ bedrooms; the first floor master bedroom has a romantic fireplace, sumptuous spa-like bath and its own terrace; upstairs has second master bedroom with extra large sitting/living room, four additional bedrooms with baths; a bonus room (or fifth bedroom); the 6 & 7th bedrooms (currently used as exercise rooms), are in the lower level. The numerous outdoor entertainment areas all combine to make the best party ever--including a wonderful dining area defined by an illuminated pergola with hanging chandeliers, 11' L-shaped bluestone bar with DSC grill, fridge, a big fireplace/sitting area and a private terrace, too! A truly wonderful home, in a fantastic location designed with the finest of everything--everywhere!



NANCY GIBSON BROKER ASSOCIATE

847.363.9880 mobile
847.509.0200 direct

Nancy@Number1Nancy.com
Number1Nancy.com



ADDITIONAL FEATURES

EXTERIOR

- All stone exterior with limestone bordered windows
- Brick-bordered driveway with circular centered brick turnaround
- Impressive U-shaped entryway
- Stately stone entry columns, 2 with illumination
- Covered portico entry to front
- Covered side portico entry to side
- Copper flashings and 4.5" Downspouts
- Cedar Shake Roof
- Underground zoned sprinkling system
- Extensive professional landscaping throughout including mature trees, bushes and flowering perennials (see architectural plans)
- Generac whole-house generator

REAR EXTERIOR:

- Four entertainment areas:
 1. Dining area
 - » Bluestone patio
 - » Pergola surround with hanging/dimmable double chandeliers
 - » Raised masonry and mature boxwood borders
 2. Entertainment area
 - » 10' x 11' L-shaped stone party island with thick 2" hand-cut edged bluestone counters
 - » DCS stainless steel 36" gas built-in range with double side burners
 - » DCS stainless steel beverage fridge
 - » DCS stainless steel storage drawers
 - » Wired for cable/TV
 - » Bluestone patio
 3. Outdoor firepit
 - » Raised circular stone firepit with bluestone ledge
 - » Bluestone patio surrounded by raised masonry garden area

4. Outdoor deck

- » Located off master bedroom and screen-in porch
- » Large enough to accommodate complete seating area
- Extensive outdoor lighting
 - Tree, bush and garden lighting
 - Inset lighting in raised masonry/entertainment areas throughout
- Stereo surround
- Extensive professional landscaping including mature evergreens, flowering trees & colorful perennials

INTERIOR

- 10'+ ceilings on first and second floors
- Imported Brazilian flooring throughout all three levels including lower level
- 2" x 6" construction throughout
- All bedrooms with private baths
- Front and back staircases
- Up and down laundries
- 8' Solid-core doors—all levels
- Custom furniture-styled cabinetry throughout with soft-closing drawers
- Soft-edge rounded drywall corners throughout
- Multi-zone Russound Media System with built-in speakers. Controlled by individual wall controls or by app on phone
- Energy-efficient casement windows
- Thick trim and crown moldings throughout
- Recessed lighting throughout
- Whole house central VAC system
- 400 Amp electrical service
- (2) 75 gallon water heaters with continuous circulating hot water
- Back-up sump pump
- Triple-zoned heating and air conditioning
- 4-Car garage with solid wood doors

MAIN LEVEL

FOYER

- Custom solid mahogany door with beveled edge glass sky lights
- Floating circular staircase leading to 2nd floor gallery with French doors opening to Juliette balcony overlooking family room
- Illuminated art alcove (2)
- Double-tiered circular medallion with chandelier and keyed lowering system
- Imported Brazilian cherry hardwood flooring
- Opens to living, dining and family rooms

LIVING ROOM

- Thick crown molding
- Oversized picture windows with transoms
- Recessed lighting
- Imported Brazilian cherry hardwood flooring
- Built-in Russound stereo system

DINING ROOM

- Gently curved walls
- Thick crown molding
- Chair/wainscot moldings
- Oversized picture windows with transoms
- Crystal beaded chandelier with matching sconces
- Imported Brazilian cherry hardwood flooring
- Built-in Russound stereo system

KITCHEN

- Custom furniture styled wood-mode cabinetry
 - » Soft-closing drawers
 - » Glass-display cabinetry
 - » Built-in bookshelf
 - » Planning center
 - » Huge 7' x 7' center island with quartzite counters, 2nd sink with disposal & filtered water dispenser
 - » Granite counters
 - » Marble backsplash
 - » Under cabinet lighting
 - » Hot water dispenser
- Extra-large eating area with gracefully curved bayed windows

- Commercial-grade appliances
 - » Wolf top-of-the-line 6-burner + griddle range and dual fuel (electric and gas) with 2 ovens
 - » Dacor stainless steel exhaust
 - » Subzero built-in side-by-side refrigerator
 - » Miele built-in dishwasher
 - » Panasonic stainless steel microwave
- In-wall pot-filler
- Organized walk-in pantry
- Recessed lighting
- Imported Brazilian cherry hardwood flooring
- Opens to butler's pantry and family room B
- Built-in Russound stereo system

BUTLER'S PANTRY

- Illuminated glass display cabinetry
- Granite counters
- Wet bar
- U-line wine fridge
- Fischer & Paykel dishwasher (#2) with drawers
- Wine rack
- Under cabinet lighting
- Recessed lighting
- Imported Brazilian cherry hardwood flooring

LIBRARY

- Beautiful coffered ceilings with crown moldings
- Floor-to-ceiling custom bookshelves
- Recessed lighting
- Imported Brazilian cherry hardwood flooring
- French door opens to delightful screened-in porch
- Built-in Russound stereo system

SCREENED-IN PORCH

- Stained Knotty pine walls and ceilings
- Dramatic vaulted ceilings
- Overhead ceiling fan with light
- Individually controlled outdoor built-in stereo system
- Cedar floor decking (over cement base)
- Opens to private terrace, patios and backyard entertainment areas
- Built-in Russound stereo system

FAMILY ROOM

- Opens completely to kitchen
- Two stories high
- Dramatic soaring floor-to-ceiling stone fireplace with raised hearth, gas starter and iron hand-forged screen/glass enclosure
- Custom built-in walnut entertainment center with illuminated glass shelving
- French doors open to outdoor patios/entertainment areas and to screened porch
- Automatic remote-controlled motorized window coverings
- Recessed lighting
- Illuminated crown molding
- Imported Brazilian cherry hardwood flooring

MASTER BEDROOM

- Located in private west wing of main level
- Inviting fireplace with attractive limestone surround and gas logs
- His and hers organized closets with dresser drawers
- In-closet security safe
- Illuminated crown molding
- Recessed lighting
- Imported Brazilian cherry hardwood flooring
- Ceiling fan
- French door to private deck
- Built-in Russound stereo system

MASTER BATHROOM

- His and hers vanities
- Linen tower
- Vanity center
- Bain-ultra self-drying jacuzzi with marble surround
- Oversized glass-enclosed steam shower with built-in seating
- Automatic remote-controlled motorized window coverings
- Heated floors
- Built-in Russound stereo system

MUD/LAUNDRY

- Located directly off attached garage
- Built-in cabinetry with granite counters
- Bosch front-loading washer and dryer

- Deep utility sink
- Built-in stainless steel Kitchenaid refrigerator
- Built-in cubbies with granite seating
- Organized shoe closet
- Organized double closet
- Built-in ironing board
- Glass doors provide convenient accesses to both front & side of home

SECOND LEVEL

BEDROOM #1 (SECOND MASTER)

- Striking 12' ceilings
- Organized walk-in closet
- Recessed lighting
- Imported Brazilian cherry hardwood flooring
- Private bath
 - » Double sinks
 - » Double thickness marble-topped vanities and flooring
 - » Separate lavatory and tub

BONUS/MEDIA/IN-LAW LR

- Ideally located adjacent to bedroom
- Vaulted ceilings
- Overhead ceiling fan
- Attractive dormered windows
- Recessed lighting
- Imported Brazilian cherry hardwood flooring

BEDROOM #3 - EN SUITE

- 12' Ceilings
- Private bath with marble vanity and tub
- Organized walk-in closet
- Darling window seat alcove
- Overhead ceiling fan with light
- Plantation shutters
- Recessed lighting
- Imported Brazilian cherry hardwood flooring

BEDROOM #4 - EN SUITE

- 12' Ceilings
- Private bath with volume ceilings curved glass-enclosed shower
- Organized walk-in closet
- Overhead ceiling fan with light
- Plantation shutters
- Imported Brazilian cherry hardwood flooring

BEDROOM #5 - EN SUITE

- 12' Ceilings
- Private bath with honed marble vanity and tub
- Organized walk-in closet
- Overhead ceiling fan with light
- Recessed lighting
- Plantation shutters
- Window seat
- Imported Brazilian cherry hardwood flooring

BONUS ROOM/BEDROOM

- Play room, exercise room, media center, office, or guest suite!
- Vaulted ceilings with dormered windows
- Overhead ceiling fan
- Recessed lighting
- Plush cream carpeting throughout

LAUNDRY ROOM #2

- Front loading LG stackable full-sized washer & dryer with steam
- Convenient adjustable storage shelving

LOWER LEVEL

RECREATION & GAME AREAS

- Large rec area with room for both ping pong, billiards, air hockey & more!
- Floor-to-ceiling brick fireplace (#3) with gas logs
- Entertainment alcove
- Game table area
- Recessed lighting
- Imported Brazilian cherry flooring throughout
- Exterior side yard access
- Built-in Russound stereo system

ENTERTAINMENT AREA

- Wraparound wet bar with marble counters
- Built-in cabinetry including glass display
- Full-sized Kitchenaid dishwasher (#3)
- U-line under counter beverage fridge
- U-line ice maker
- Recessed lighting
- Imported Brazilian flooring throughout

HOME THEATRE

- Mitsubishi 1080p overhead projection with 92" flat screened TV
- Built-in speakers
- Double glass-encased media cabinets
- Dimmable wall sconces and recessed lighting

WINE CELLAR

- Thermostatically controlled
- Built-in wine racks housing 300 bottles
- Room for tasting table
- Ceramic tiled flooring

BEDROOM #6/EXERCISE ROOM

- Plush neutral carpeting
- Recessed lighting
- Access to hall bath

BEDROOM #7/OFFICE/PLAYROOM

- Plush neutral carpeting
- Recessed lighting

IN-HOUSE SAUNA

- Large tiered seating area
- Ideally located across full bath
- McCoy sauna heater

FULL BATH

- Dual access to lower level living areas and bedroom
- Heated electric floors
- Marble counter-top and tub

ADDITIONAL FEATURES

- Walk-in storage room with organized adjustable shelving and additional storage under stairs & in large utility room



DINING ROOM



LIVING ROOM



KITCHEN



BREAKFAST AREA/KITCHEN



BUTLER'S PANTRY



KITCHEN



LIBRARY/OFFICE



FAMILY/GREAT ROOM



MASTER BATHROOM



MASTER BEDROOM



SITTING/BONUS ROOM



SECOND LEVEL MASTER BATHROOM



SECOND LEVEL MASTER BEDROOM



BEDROOM



EN SUITE BATHROOM



BEDROOM



EN SUITE BATHROOM



BEDROOM



SEMI EN SUITE BATHROOM



BIG BONUS ROOM/BEDROOM



WINE CELLAR



SAUNA



RECREATION/GAME ROOM



GAME AREA



ENTERTAINMENT CENTER WITH WET BAR



EXERCISE ROOM/6TH BEDROOM



LOWER LEVEL BATHROOM



HOME THEATER



SCREENED-IN PORCH



OUTDOOR TERRACE

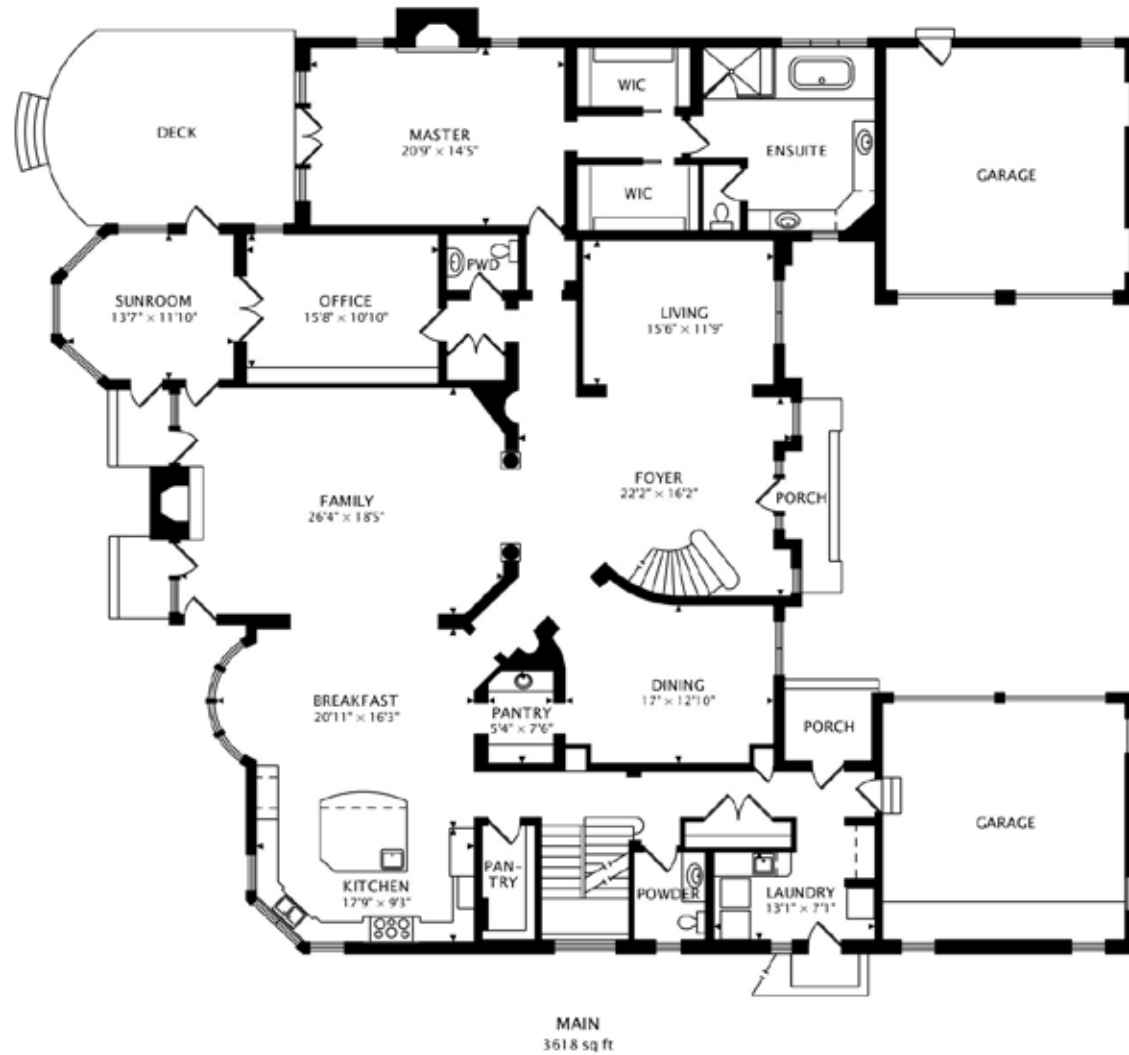


OUTDOOR TERRACE



FIREPIT

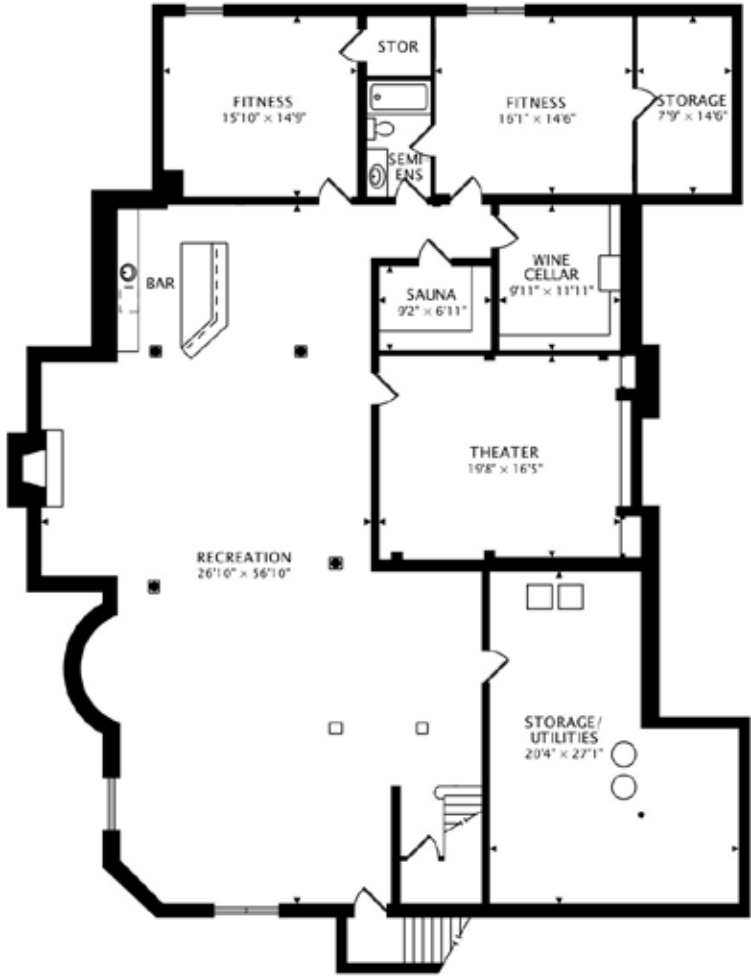
FIRST LEVEL



SECOND LEVEL



LOWER LEVEL



LOWER
3370 sq ft BELOW GRADE



847.363.9880 cell

847.509.0200 office

nancy@number1nancy.com

Number1Nancy.com

1314 Shermer Rd
Northbrook, IL 60062

@properties®



OVER
\$580
MILLION

Lifetime Sales**

OVER
\$34
MILLION

2019 Sales*

#1

Northbrook Broker*
all agencies

ABOUT NANCY

A top-producing broker in the North Shore, Nancy Gibson has consistently been a top sales producer since starting as a real estate professional in the 1980's. Her business philosophy is simple: incorporate experience, knowledge of the marketplace, hard work, and a strong marketing plan to obtain successful results. Nancy is a recipient of the Merchandise Mart's prestigious LuxeHome 10 Award, recognizing her as one of the top 10 Luxury Real Estate Brokers within the Suburban Chicagoland area. Nancy has also been named in the top 35 of all residential brokers in the 6-metro Chicagoland areas by Chicago Magazine in 2019, as well as a 'most notable' broker in Crain's Chicago Business.

Nancy's dedication to her clients, along with her marketing abilities—including her own copywriting of magazine-format glossy brochures, free in-house staging and full-scale internet exposure—continually raise the bar across the industry. Nancy attends numerous national educational conferences with other top producers to stay abreast of current and changing technology and market conditions. As founder of the Nancy Gibson Group, Nancy's team is composed of professionals including a listings manager, a statistician, a professional photographer, a web design team, a mortgage broker and two buyer's agents—all of whom strive to continually service all of their client's needs.

Nancy is a graduate of the University of Illinois. She has numerous certifications including Certified Relocation Expert, Luxury Home Specialist and New Construction Specialist. She has been a resident of Northbrook for over 33 years, where she has raised her family and continues to be involved in the community.

*MRED: 1/1/2019 - 12/31/2019, #1 broker in closed sales volume and units of all brokerage in Northbrook

**MRED: 1988-present, total sales.

@properties®

Leading REAL ESTATE
COMPANIES
OF THE WORLD®

LP LUXURY
PORTFOLIO
INTERNATIONAL®