

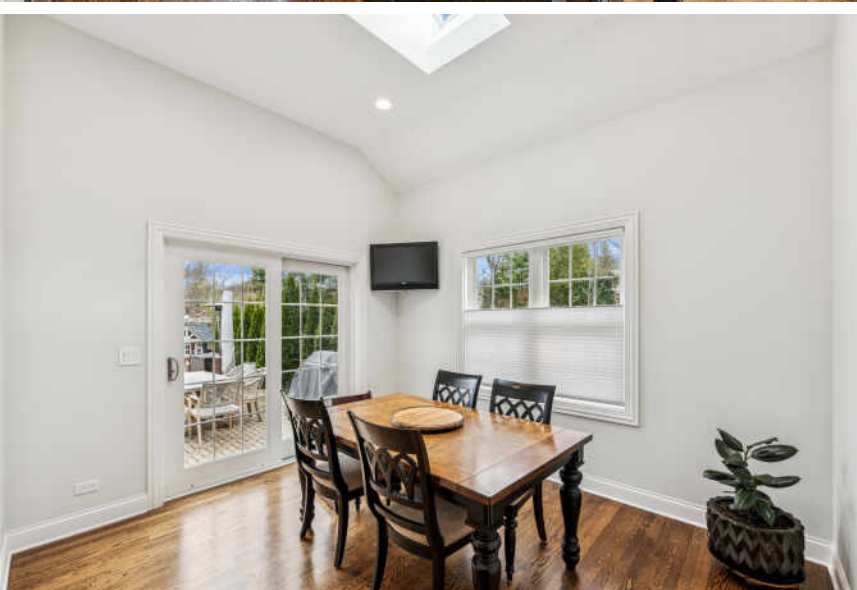
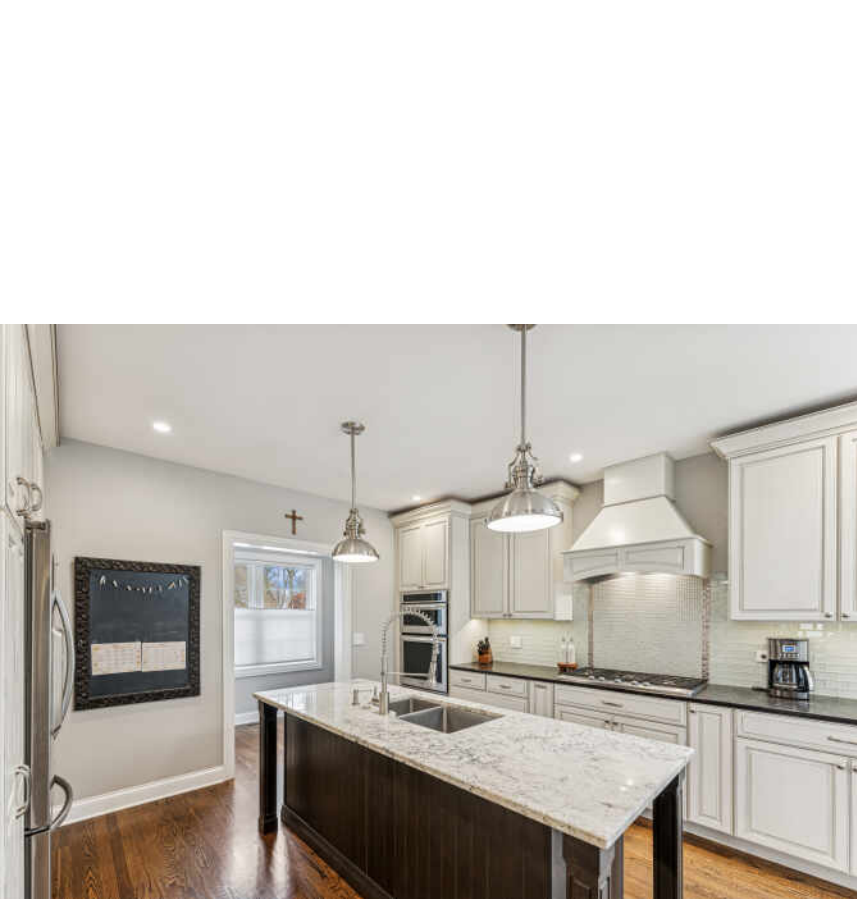
601 S BURTON PLACE
ARLINGTON HEIGHTS





PICTURE PERFECT SCARSDALE

Welcome to this Scarsdale beauty. Stunning expansion and renovation of this Tackett home done in 2013 creates a truly extraordinary residence. You are warmly greeted by the inviting paver walkway leading to the front door. Offering a perfect blend of modern luxury and comfortable living, this richly appointed home features hardwood flooring throughout, distinctive white crown moldings and custom lighting. The exquisitely designed kitchen is a chefs delight, featuring an abundance of stunning custom cabinetry, pantry, high end appliances, oversized prep and serving island and eye catching backsplash. The kitchen opens to the large sunny breakfast room with volume ceilings and a skylight. You will appreciate the distinctive curved entry into the intimate dining room and relax in the large living room with a gas fireplace. Offering the perfect flex space on the first floor is a large office/bedroom. The second level has three large bedrooms, well appointed hall bath with a soaker tub and a conveniently placed laundry room. The primary suite features a huge walk-in closet with custom build-in organizers and a luxurious ensuite bath with double bowl vanity and walk-in shower. The finished lower level with a powder room is that perfect spot for extra living space and entertaining and has a large utility room for storage. The good sized back yard has a private paver brick patio, perfect for your morning coffee and handy storage shed. New in 2013 is the home addition, dual ac/furnace, electrical, plumbing, overhead sewer, two car attached garage and roof replaced to most of the home. This location is superb it's an easy walk to the Metra, and a stones through to the vibrant downtown Arlington Hts restaurants, shops and it's many parks. District 25 Dryden elementary and South Middle school, district 214 Prospect High School.









SIZES AND DIMENSIONS ARE APPROXIMATE, ACTUAL MAY VARY.



WITH ALL THE AMENITIES YOU WOULD EXPECT TO FIND IN LARGER URBAN SETTINGS, **ARLINGTON HEIGHTS** GIVES MOST CITIES A RUN FOR THEIR MONEY

Located 25 miles northwest of Chicago, the community has a vibrant downtown area, theaters, restaurants, shopping, parks, recreation, and two commuter train stations. It's no wonder Arlington Heights tops the list of the highest-populated villages in the country.

Arlington Heights is home to more than 200 restaurants, many situated in its downtown area and offering something for every taste.

The village hosts outdoor festivals, parades, and its ever-popular Frontier Days. Residents have plenty of bike paths, picnic areas, golf courses, lakefront paths, and more to enjoy.

Commuting downtown is a convenient 30-minute trip with two Metra stations offering direct access to Chicago's Ogilvie Station. The village also has direct access to I-90 as well as Route 53, which links to several interstates.



NOTES

[illegible]



LINDSEY & ANNE KAPLAN

224-434-1004

847-401-7904

THEKAPLANTEAM@ATPROPERTIES.COM

WWW.KAPLANTEAMHOMES.COM

THE
KAPLAN
TEAM



CHRISTIE'S
INTERNATIONAL REAL ESTATE