



604 PINE LANE SAWYER

604 PINE LANE · SAWYER



@properties | CHRISTIE'S
INTERNATIONAL REAL ESTATE

LP LUXURY
PORTFOLIO
INTERNATIONAL



DOUG WORTMAN ASSOCIATE BROKER

269.930.2250 mobile
dougwortman@atproperties.com
www.WortmanGroup.com

WORTMAN
GROUP

604 PINE LANE • SAWYER





604 PINE LANE LAKE MICHIGAN IS CALLING!

FEATURES

Lake Michigan is calling... and your beach house is ready to one of the best beaches in SW Michigan! Tucked into a unique, secluded ravine setting, this rare gem is so close to the lake you can hear the waves. Enjoy seasonal lake views and year around stunning Lake Michigan sunsets. Homes like this desirable lakeside community rarely come to market — don't miss your chance! Inside, you'll love the spacious open floor plan where the living room with its cozy fireplace flows effortlessly into the dining and kitchen area — perfect for entertaining and everyday living. Upstairs, the primary suite offers a full bath and closet. The home features almost 2,000 finished square feet, 3 bedrooms, and 2 full baths.

Outside, your private oasis awaits with a large deck with hot tub, a balcony off the dining area, and a convenient outdoor shower. You'll also enjoy an oversized 2-car attached garage, additional basement storage, and the peace of mind of a generator. This community delivers it all — deeded access to wide sandy Lake Michigan beach, tennis/pickleball courts, a new playground currently under construction, and fun year-round social events.

Whether you're looking for the perfect weekend escape or a fantastic second home, this property puts you minutes from restaurants, galleries, shops, wineries, and award-winning golf courses — all while being less than 90 minutes from downtown Chicago.



DOUG WORTMAN ASSOCIATE BROKER

269.930.2250 mobile

dougwortman@atproperties.com

www.WortmanGroup.com

WORTMAN
GROUP







































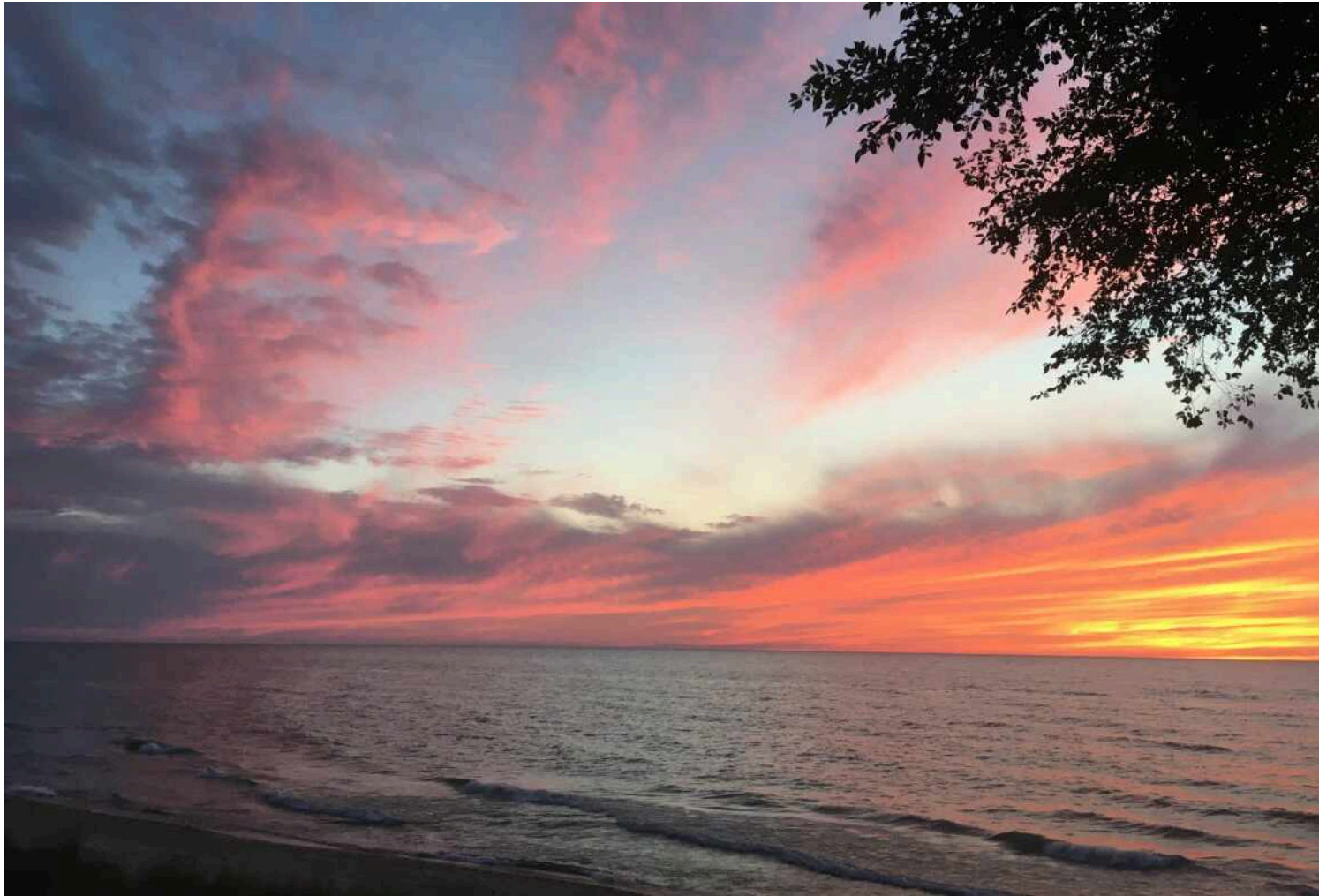








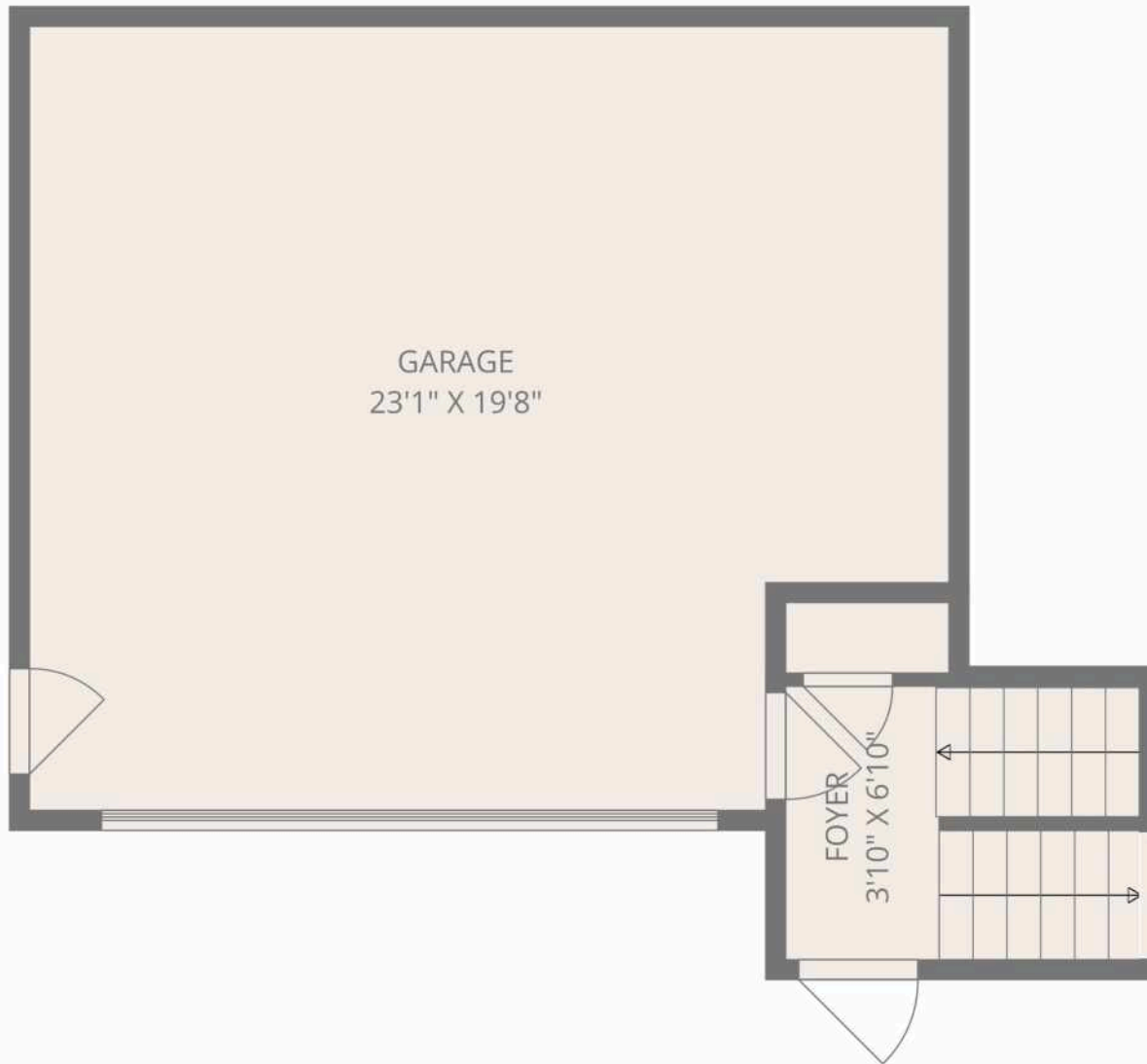












Total: 1612 sq. ft

Basement: 32 sq. Ft, 1st Floor: 69 sq. Ft, 2nd Floor: 453 sq. Ft, 3rd Floor: 734 sq. Ft, 4th Floor: 324 sq. ft

Excluded Areas: Storage: 29 sq. Ft, Basement: 267 sq. Ft, Garage: 427 sq. Ft,

Low Ceiling: 90 sq. Ft, Walls: 260 sq. ft

FLOOR PLAN CREATED BY CUBICASA APP. MEASUREMENTS DEEMED HIGHLY RELIABLE BUT NOT GUARANTEED.



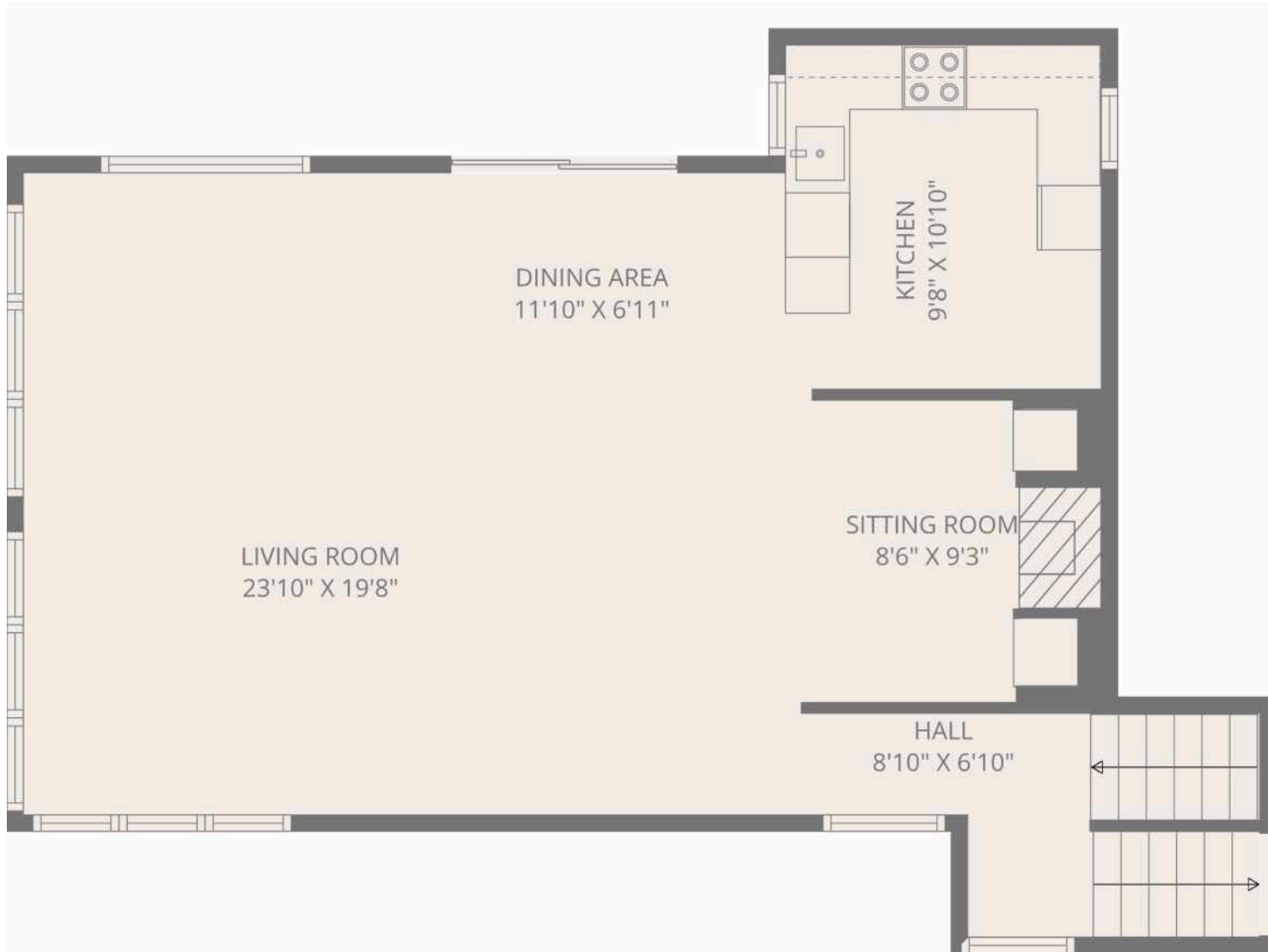
Total: 1612 sq. ft

Basement: 32 sq. Ft, 1st Floor: 69 sq. Ft, 2nd Floor: 453 sq. Ft, 3rd Floor: 734 sq. Ft, 4th Floor: 324 sq. ft

Excluded Areas: Storage: 29 sq. Ft, Basement: 267 sq. Ft, Garage: 427 sq. Ft,

Low Ceiling: 90 sq. Ft, Walls: 260 sq. ft

FLOOR PLAN CREATED BY CUBICASA APP. MEASUREMENTS DEEMED HIGHLY RELIABLE BUT NOT GUARANTEED.



Total: 1612 sq. ft

Basement: 32 sq. Ft, 1st Floor: 69 sq. Ft, 2nd Floor: 453 sq. Ft, 3rd Floor: 734 sq. Ft, 4th Floor: 324 sq. ft

Excluded Areas: Storage: 29 sq. Ft, Basement: 267 sq. Ft, Garage: 427 sq. Ft,

Low Ceiling: 90 sq. Ft, Walls: 260 sq. ft



Total: 1612 sq. ft

Basement: 32 sq. Ft, 1st Floor: 69 sq. Ft, 2nd Floor: 453 sq. Ft, 3rd Floor: 734 sq. Ft, 4th Floor: 324 sq. ft
 Excluded Areas: Storage: 29 sq. Ft, Basement: 267 sq. Ft, Garage: 427 sq. Ft,
 Low Ceiling: 90 sq. Ft, Walls: 260 sq. ft

FLOOR PLAN CREATED BY CUBICASA APP. MEASUREMENTS DEEMED HIGHLY RELIABLE BUT NOT GUARANTEED.

@properties® | CHRISTIE'S
INTERNATIONAL REAL ESTATE

Leading REAL ESTATE
COMPANIES
OF THE WORLD®

LP
LUXURY
PORTFOLIO
INTERNATIONAL

