



6101 N SHERIDAN ROAD UNIT 34D
EDGEWATER

 **properties®**



ROOM DIMENSIONS

LIVING ROOM : 25' × 17'

DINING ROOM : 15' × 11'

KITCHEN : 7' × 12'

PRIMARY BEDROOM : 19' × 14'

SECOND BEDROOM : 15' × 12'

ENCLOSED PORCH : 10' × 7'

FOYER : 7' × 6'

LAUNDRY ROOM : 8' × 10'

2 BEDROOM

2 BATH

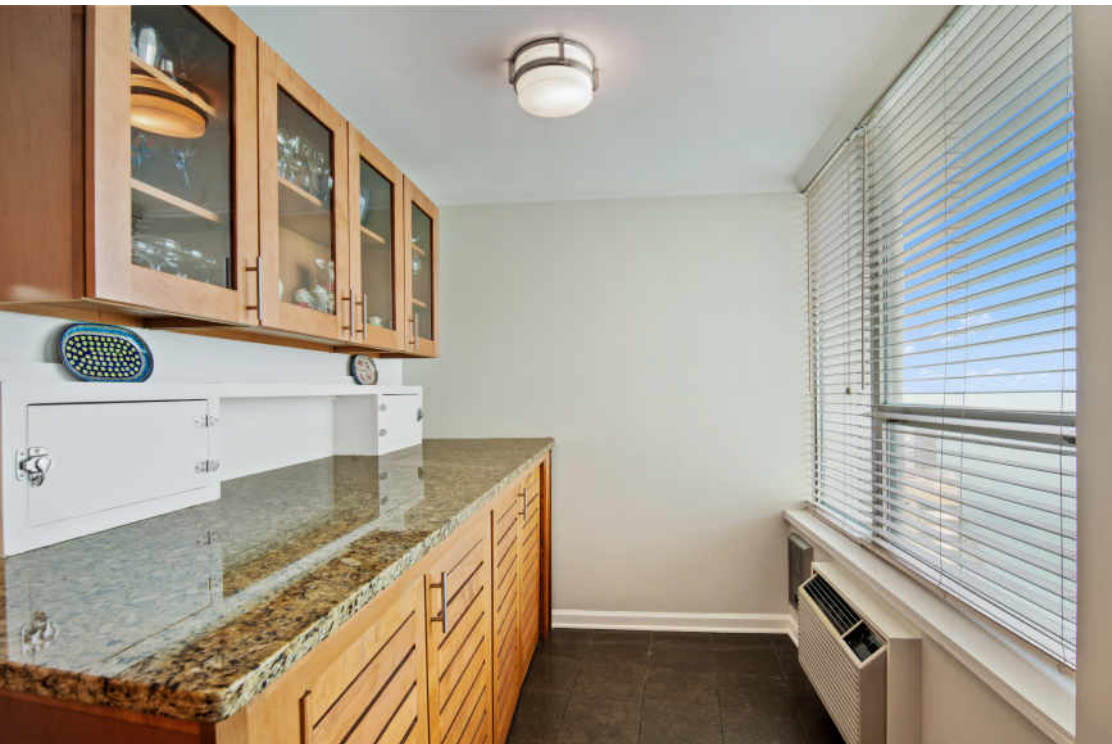
TAXES: \$5,103.42

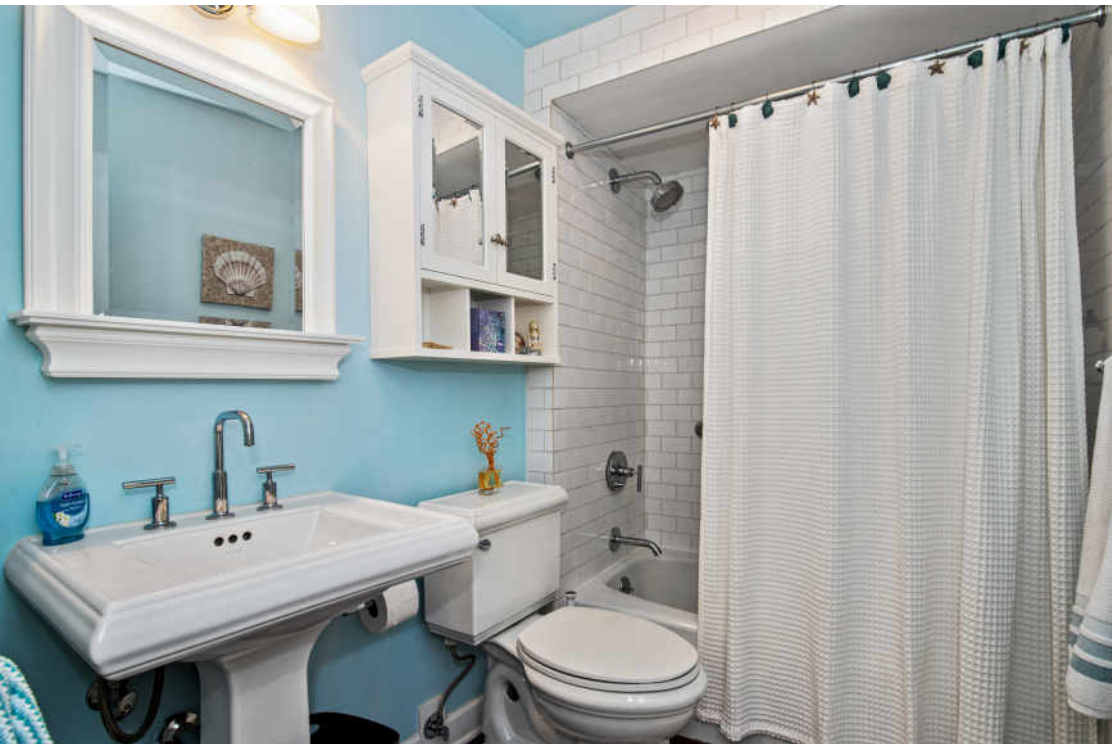
ASSESSMENTS: \$947

WAKE UP TO THE SUNRISE!

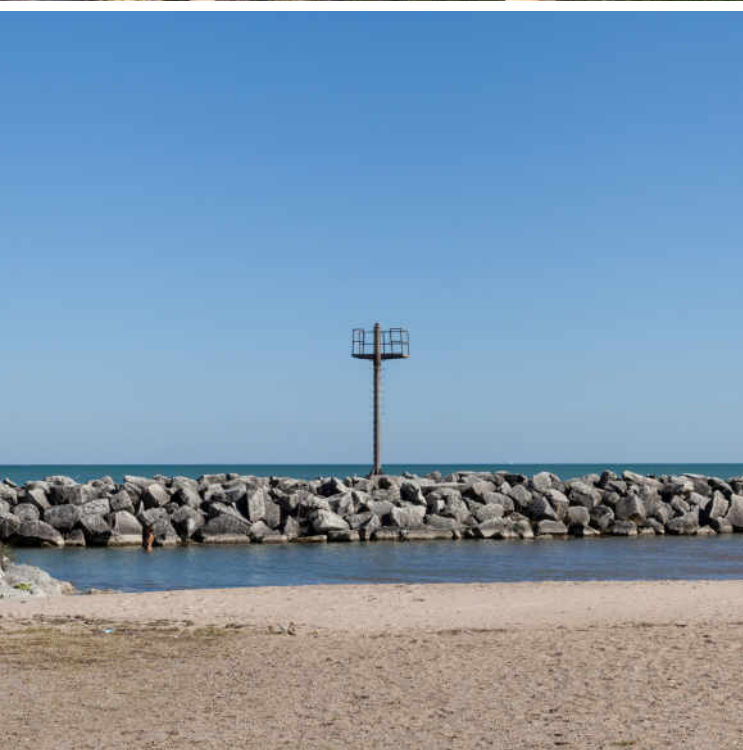
This unit feels like it floats a bit over Lake Michigan so the views are unparalleled! Great Western views as well from both bedrooms so sunsets are gorgeous! Extra wide living area with wall of windows, full dining area and new wide plank wood floors. Honey maple kitchen with glass subway tile backsplash, stainless appliances and granite countertops with breakfast bar that opens up to the living area. Large primary suite with walk in closet and tastefully modern but timeless bath with marble, Kohler fixtures, euro height vanity, and walk in shower. Second bath has Kohler fixtures, white subway tile and pedestal sink. Side by side front load washer dryer with a folding station. 3 season terrace with sliding doors that open for lake breezes. Full amenity building with doorman, pool, elevator, sauna, fitness center and valet garage parking for \$125/mo and guest parking for a fee. Big dogs welcomed! Walk to Red Line, numerous beaches, & Whole Foods.











LAKESIDE LIVING NEVER GOES OUT OF STYLE IN **EDGEWATER.**

The neighborhood draws residents with its spectacular lake views, large beaches, thriving theater scene and restaurants with cuisines from around the world. Edgewater also boasts its fair share of antique shops, cafes and parks.

Encompassing a number of neighborhoods between Uptown and Rogers Park, the neighborhood offers convenience and proximity to downtown Chicago and nearby Loyola University. The community is easily accessible by Lake Shore Drive and public transportation, including the CTA Red Line and Metra's Union Pacific North Line.

Edgewater retains some of its early posh glamour with stately mansions, Neo-Gothic churches and the iconic 1920s pink Edgewater Beach Apartments. The Bryn Mawr Historic District features opulent mansions and vintage lamp posts. Edgewater housing choices also include high-rise condominiums, vintage three-flats, greystones and new-construction single-family homes.





ALLEY BALLARD

(312) 848-7787

773-862-0200

ALLEYBALLARD@ATPROPERTIES.COM

WWW.THEBALLARDREPORT.COM



6101SHERIDAN34D.INFO