



611 ASH STREET WINNETKA



611 ASH STREET · WINNETKA

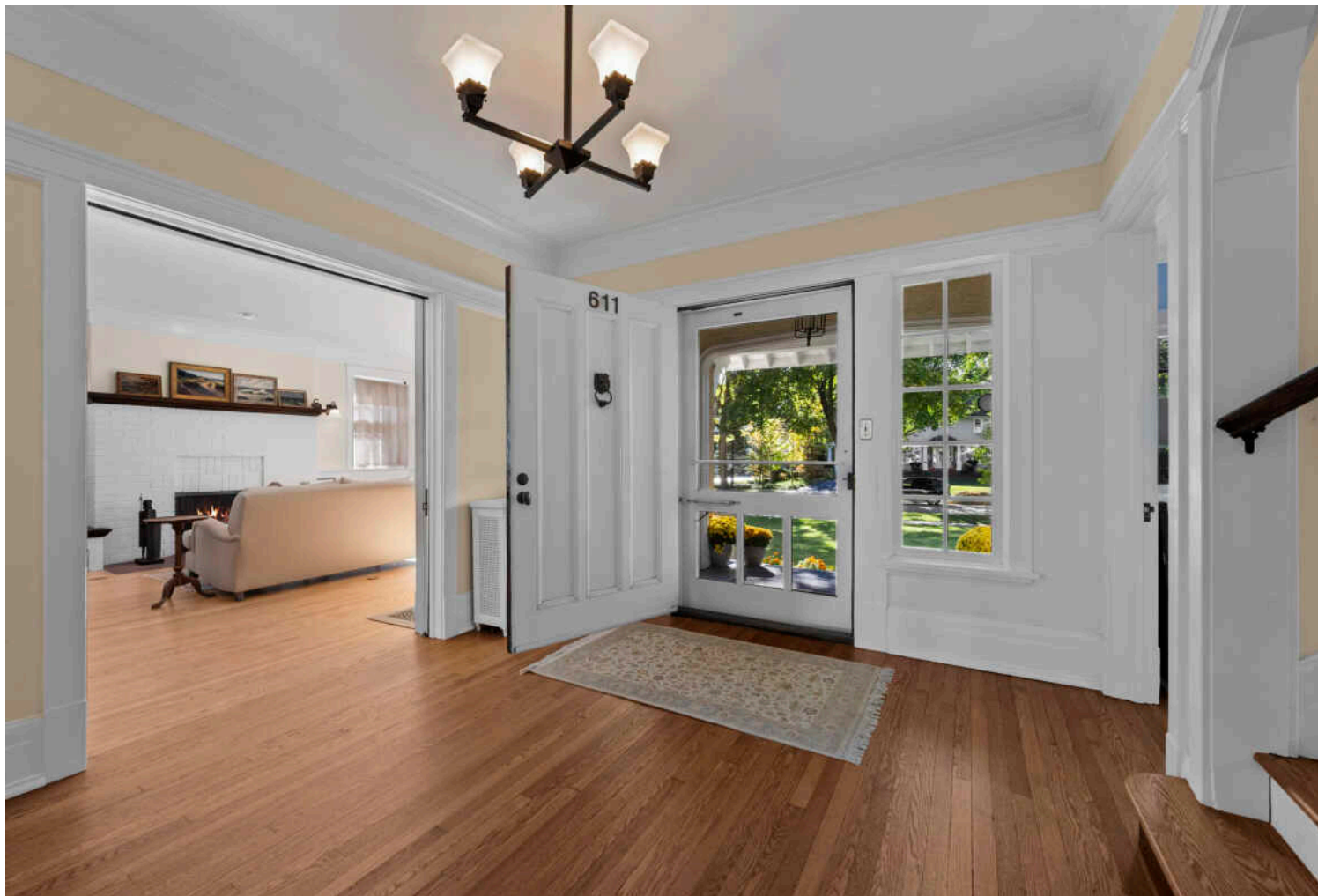


ANNIKA VALDISERRI BROKER

312.504.5020 mobile
847.881.0200 office
annika@atproperties.com
www.annikav.com

611 ASH STREET • WINNETKA





611 ASH STREET

FEATURES

Welcome to 611 Ash street in East Winnetka! A true classic on an oversized 70x186 lot. Greeted by the large inviting porch, the circular floor-plan gives the house a wonderful flow! Large gracious sun-filled rooms through out. The pretty kitchen with a large butcher block island and amazing storage is open to the family room that has doors to the deck and landscaped yard. The pretty dining room opens up to the sun room. The front living room has a pretty fireplace and built ins. First floor also has an office or first floor bedroom with an en-suite full bath and a pretty guest bath and mudroom. Second floor offers 4 bedrooms and 2 full baths and your second laundry. The large primary suite has a lovely bathroom with stand alone shower and soaking tub plus great his and her closets. Staircase up to a large unfinished attic that can easily be finished or used for storage. Full unfinished basement with laundry and lots storage. Perfect location to walk to town, train, schools, parks, beaches and Village Green. Extensive 2010-2012 renovations with new kitchen, family room expansion and beautiful new baths throughout. 2010 new roof, garage, windows, water service, plumbing and electric. Amazing storage throughout home. This is a gem.

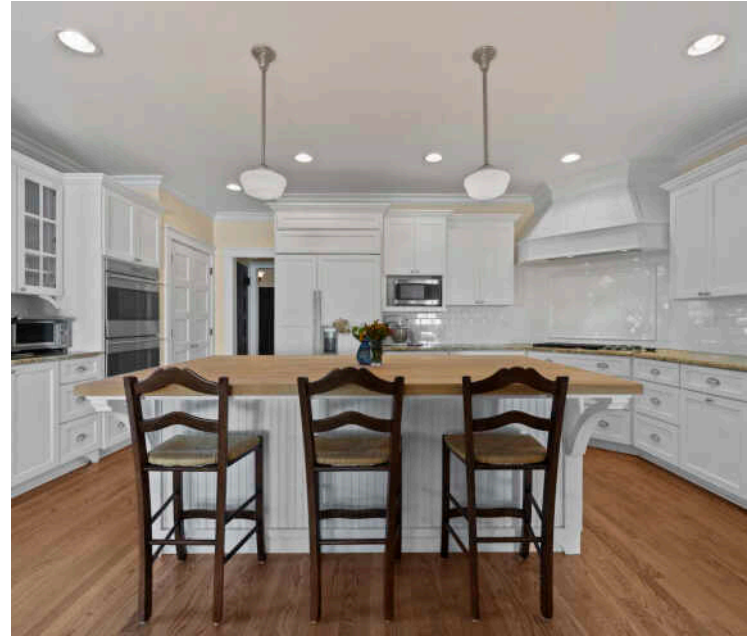


ANNIKA VALDISERRI BROKER

312.504.5020 mobile
847.881.0200 office

annika@atproperties.com
www.annikav.com

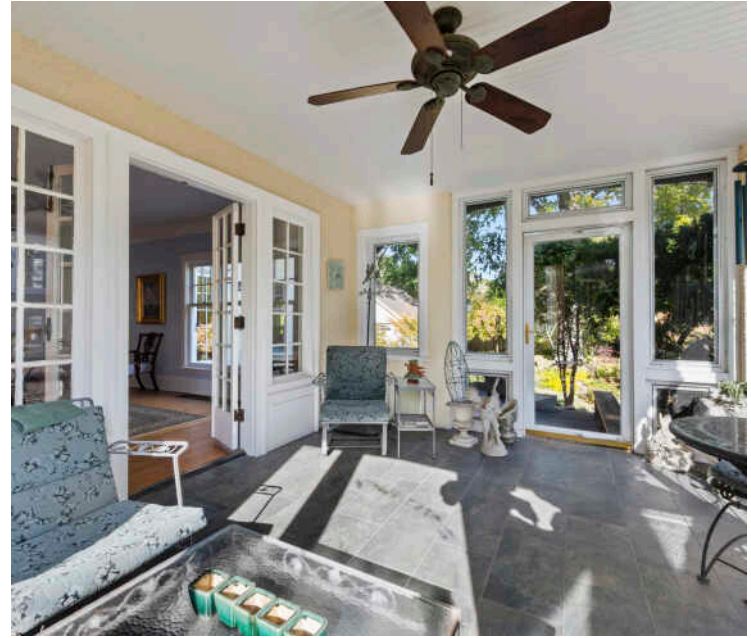






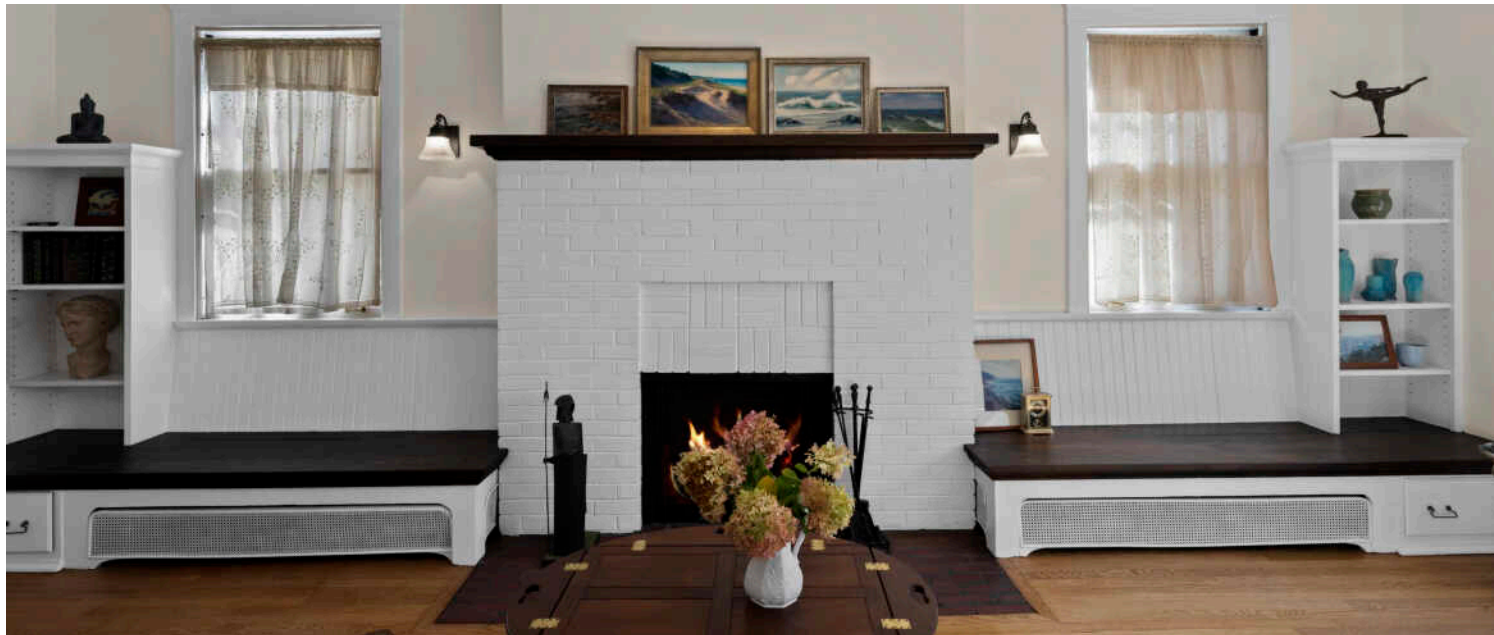
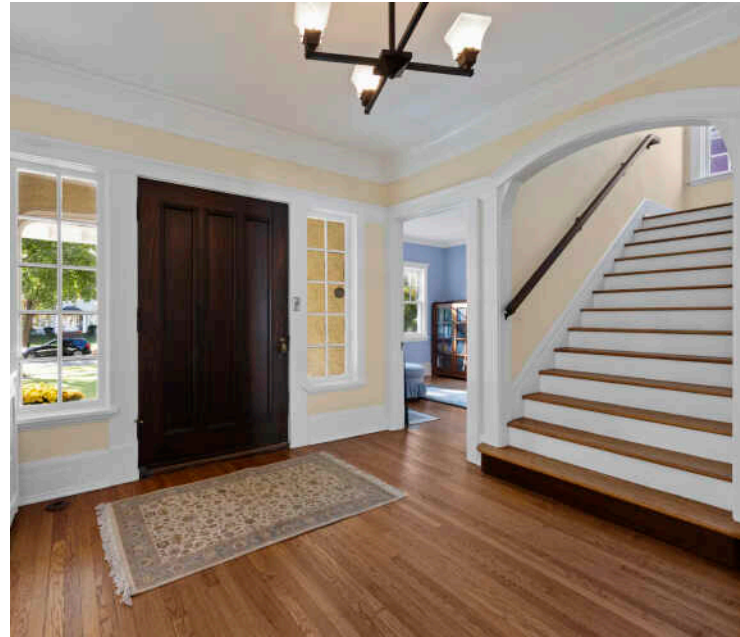


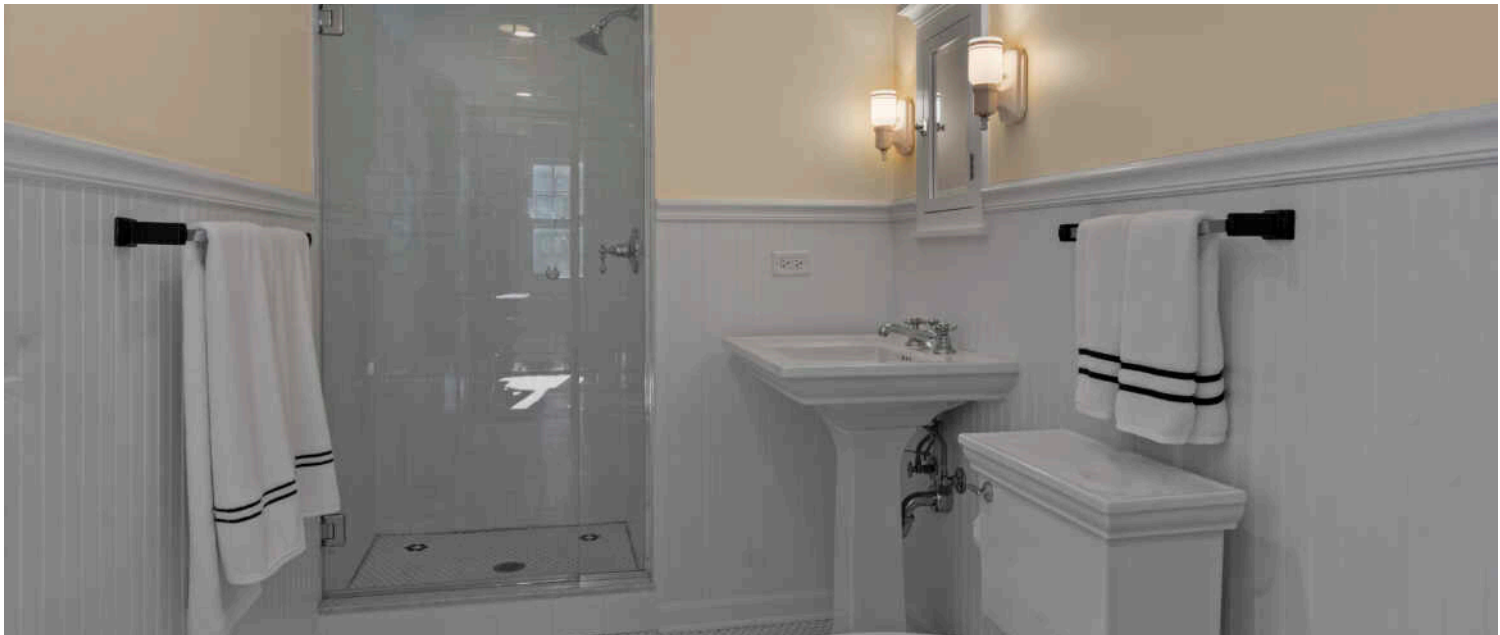






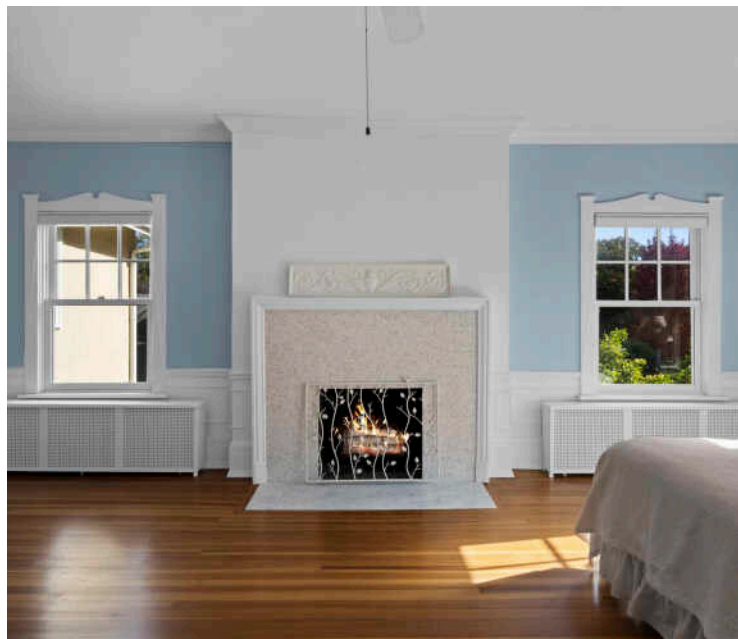
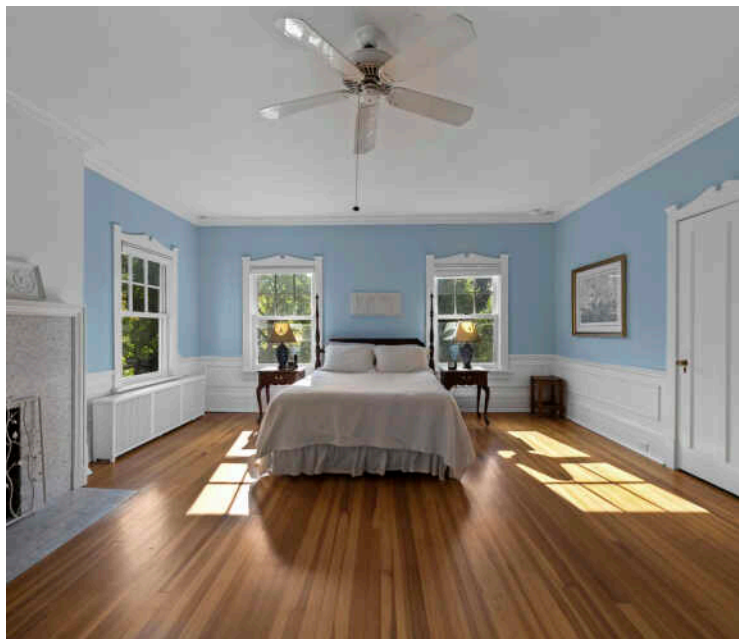
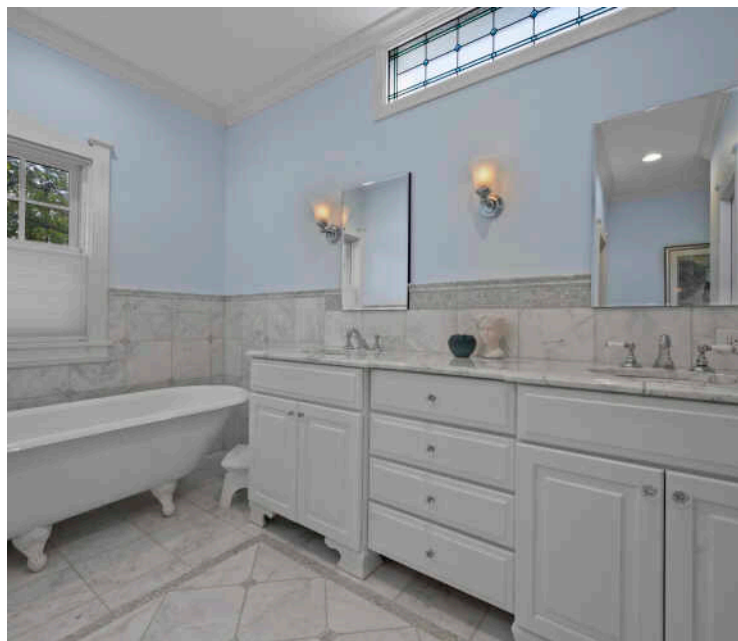


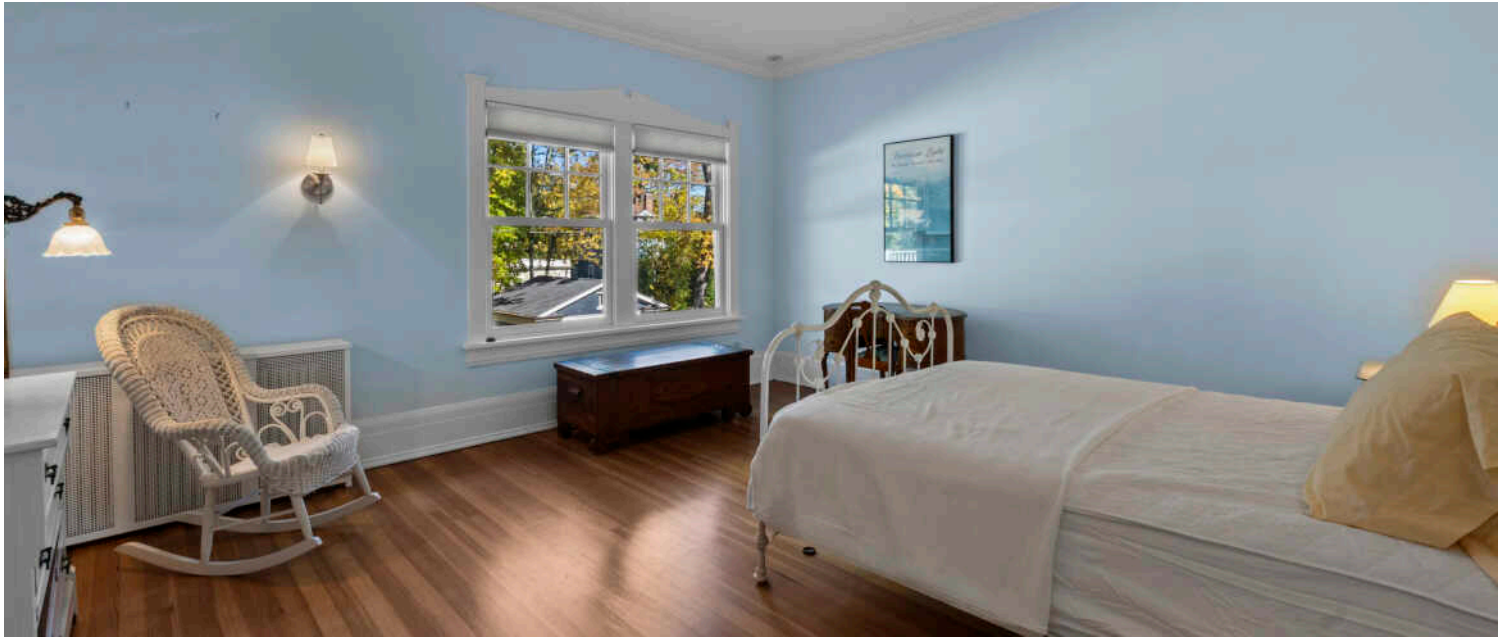




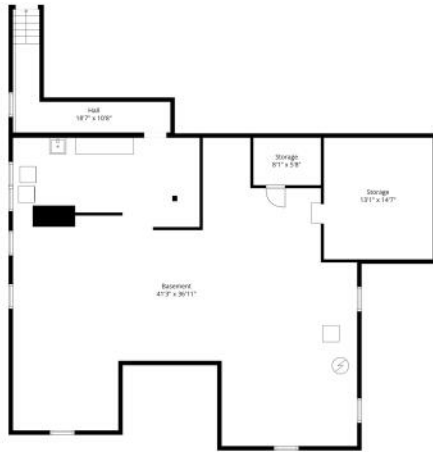












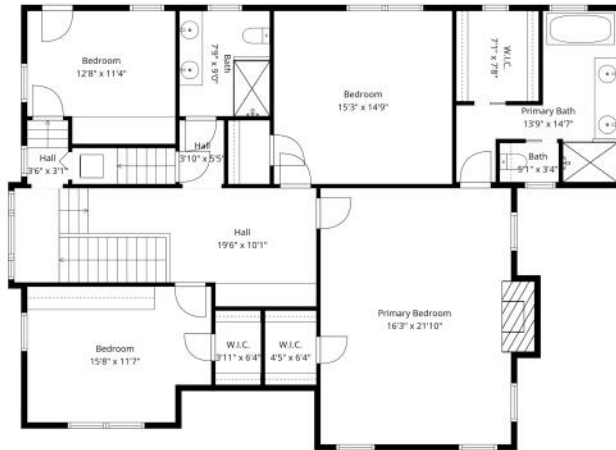
TOTAL: 3544 sq. ft.
 BELOW GRADE: 117 sq. ft. FLOOR 2: 1844 sq. ft. FLOOR 3: 1583 sq. ft. FLOOR 4: 0 sq. ft.
 EXCLUDED AREAS: BASEMENT: 1267 sq. ft. LOW CEILING: 616 sq. ft. STORAGE: 46 sq. ft.
 SCREENED PORCH: 177 sq. ft. PORCH: 116 sq. ft. DECK: 387 sq. ft.
 FIREPLACE: 28 sq. ft. ATTIC: 756 sq. ft. WALLS: 406 sq. ft.

Note: Plan Created By Caldwells App. Measurements Taken Usinging Methods But Not Accurate.



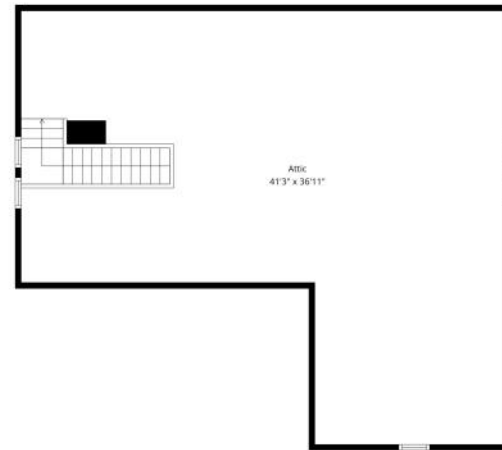
TOTAL: 3544 sq. ft.
 BELOW GRADE: 117 sq. ft. FLOOR 2: 1844 sq. ft. FLOOR 3: 1583 sq. ft. FLOOR 4: 0 sq. ft.
 EXCLUDED AREAS: BASEMENT: 1267 sq. ft. LOW CEILING: 616 sq. ft. STORAGE: 46 sq. ft.
 SCREENED PORCH: 177 sq. ft. PORCH: 116 sq. ft. DECK: 387 sq. ft.
 FIREPLACE: 28 sq. ft. ATTIC: 756 sq. ft. WALLS: 406 sq. ft.

Note: Plan Created By Caldwells App. Measurements Taken Usinging Methods But Not Accurate.



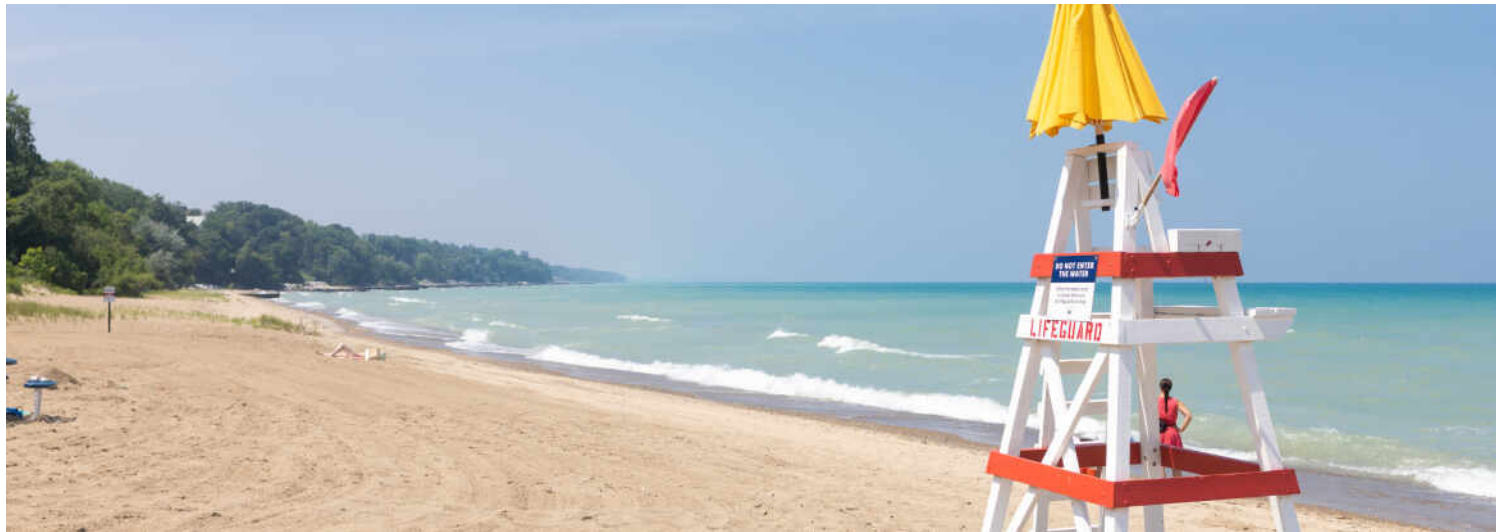
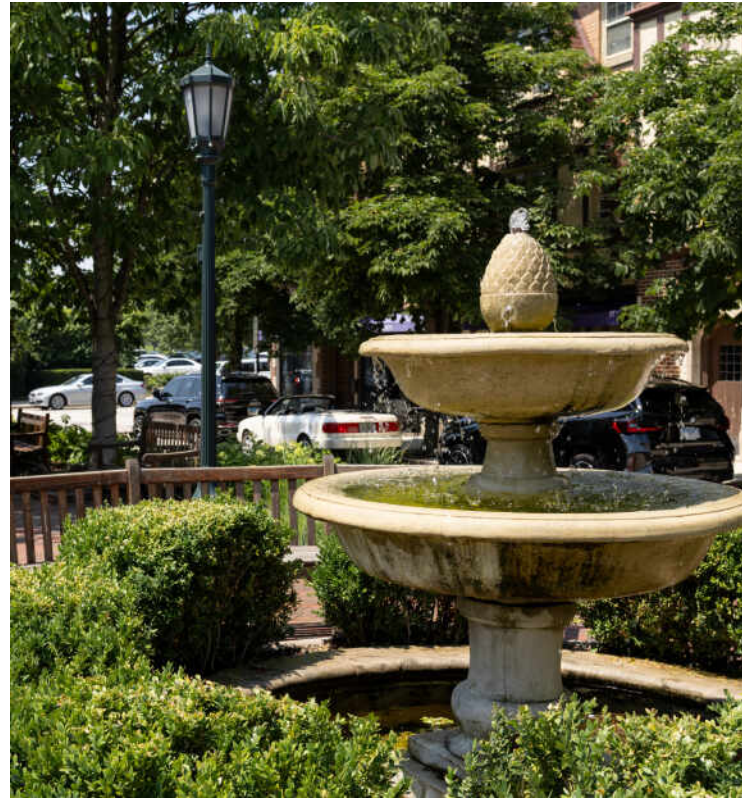
TOTAL: 3544 sq. ft.
 BELOW GRADE: 117 sq. ft. FLOOR 2: 1844 sq. ft. FLOOR 3: 1583 sq. ft. FLOOR 4: 0 sq. ft.
 EXCLUDED AREAS: BASEMENT: 1267 sq. ft. LOW CEILING: 616 sq. ft. STORAGE: 46 sq. ft.
 SCREENED PORCH: 177 sq. ft. PORCH: 116 sq. ft. DECK: 387 sq. ft.
 FIREPLACE: 28 sq. ft. ATTIC: 756 sq. ft. WALLS: 406 sq. ft.

Note: Plan Created By Caldwells App. Measurements Taken Usinging Methods But Not Accurate.



TOTAL: 3544 sq. ft.
 BELOW GRADE: 117 sq. ft. FLOOR 2: 1844 sq. ft. FLOOR 3: 1583 sq. ft. FLOOR 4: 0 sq. ft.
 EXCLUDED AREAS: BASEMENT: 1267 sq. ft. LOW CEILING: 616 sq. ft. STORAGE: 46 sq. ft.
 SCREENED PORCH: 177 sq. ft. PORCH: 116 sq. ft. DECK: 387 sq. ft.
 FIREPLACE: 28 sq. ft. ATTIC: 756 sq. ft. WALLS: 406 sq. ft.

Note: Plan Created By Caldwells App. Measurements Taken Usinging Methods But Not Accurate.



WINNETKA IS BEAUTIFUL INSIDE AND OUT – FROM ITS PICTURESQUE DOWNTOWN AND SCENIC BEACHES TO HOMES DESIGNED BY RENOWNED MASTERS OF ARCHITECTURE.

Locals love the tree-lined neighborhoods and charming business districts that offer everything from upscale shops and grocery stores to popular dining spots. With three Metra stations, Winnetka is also convenient for commuters.

Gorgeous neighborhoods surround the village's downtown business district, putting residents near a variety of boutique shops and eateries. Three Metra stations are also located throughout the community, providing convenient commuting options to downtown Chicago. With Winnetka's beautiful beaches, golf courses, A.C. Nielsen Tennis Center, Ice Arena, and numerous parks, you may never want to leave.

Public schools in Winnetka include New Trier High School, which consistently ranks among the best in the country.

Winnetka's housing choices range from multimillion-dollar lakefront mansions to in-town condominiums and townhomes. Victorians, Colonials, and Tudors are interspersed with contemporary and new construction homes on graceful tree-lined streets. Neighborhoods feature homes by some of the most distinguished architects of their day including George Maher, Howard Van Doren Shaw, and David Adler.

For all of its beauty, residents will tell you it's what's on the inside that counts. They love Winnetka's close-knit feeling and sense of community, with neighbors coming together for block parties, parades, and fireworks.





@properties® | CHRISTIE'S
INTERNATIONAL REAL ESTATE

Leading REAL ESTATE
COMPANIES
OF THE WORLD®

LP
LUXURY
PORTFOLIO
INTERNATIONAL®

