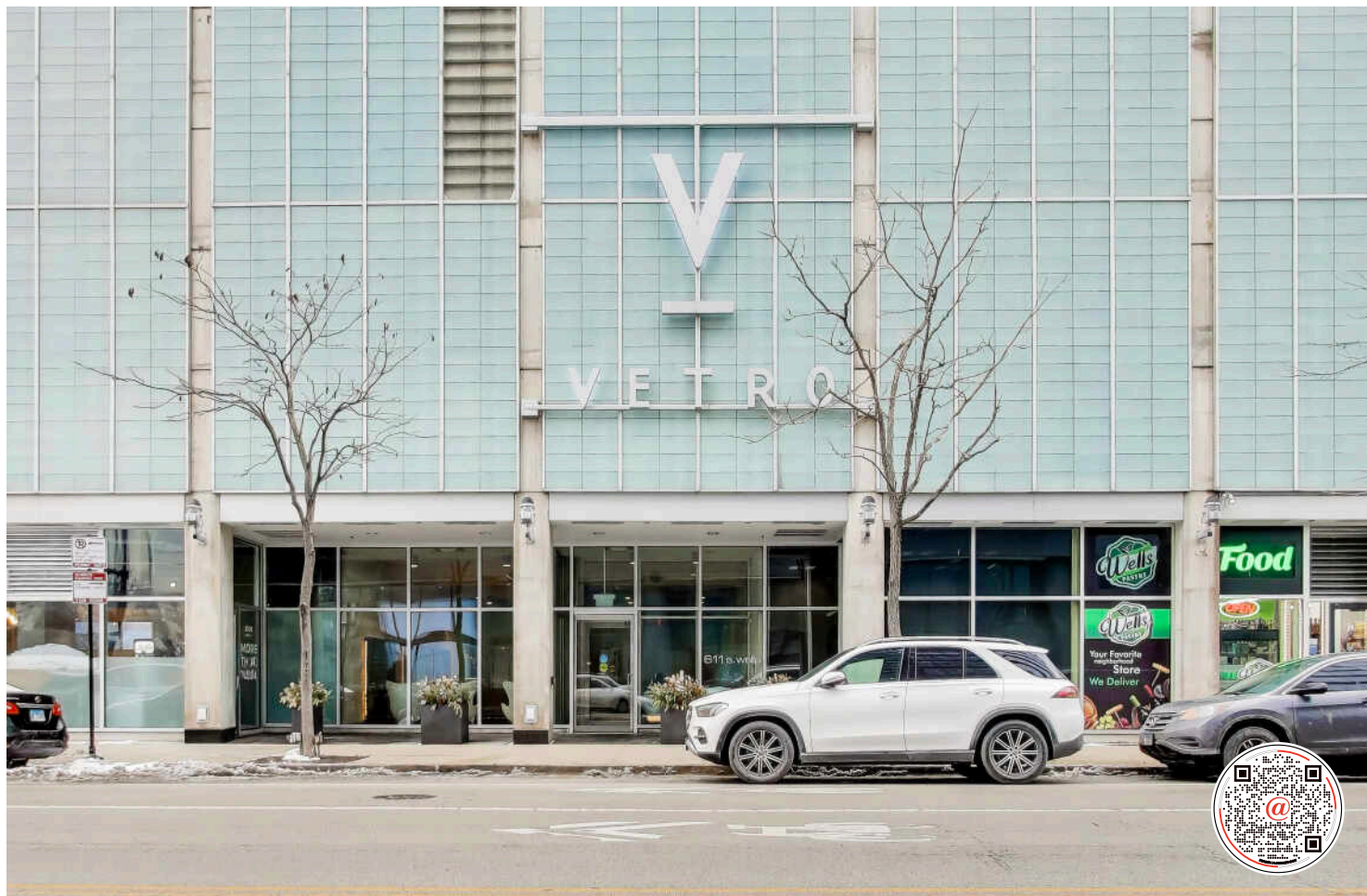
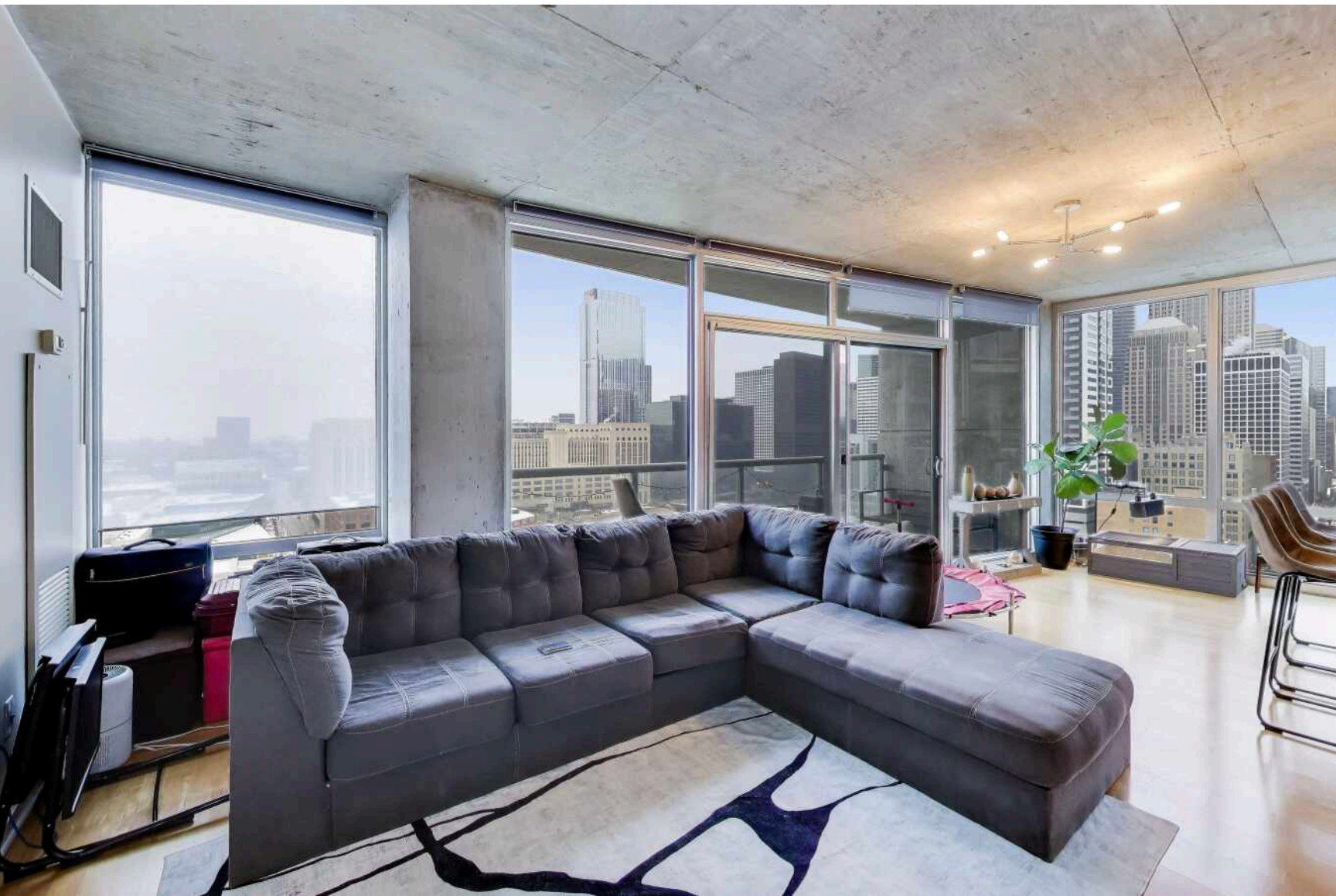


611 S WELLS STREET #2104
SOUTH LOOP

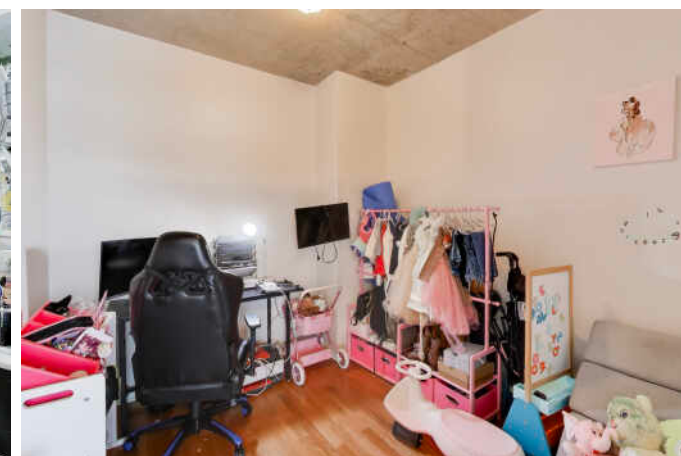
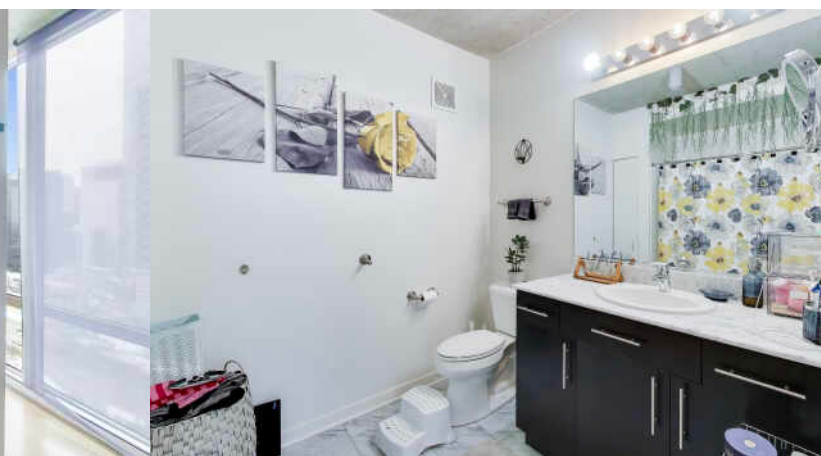
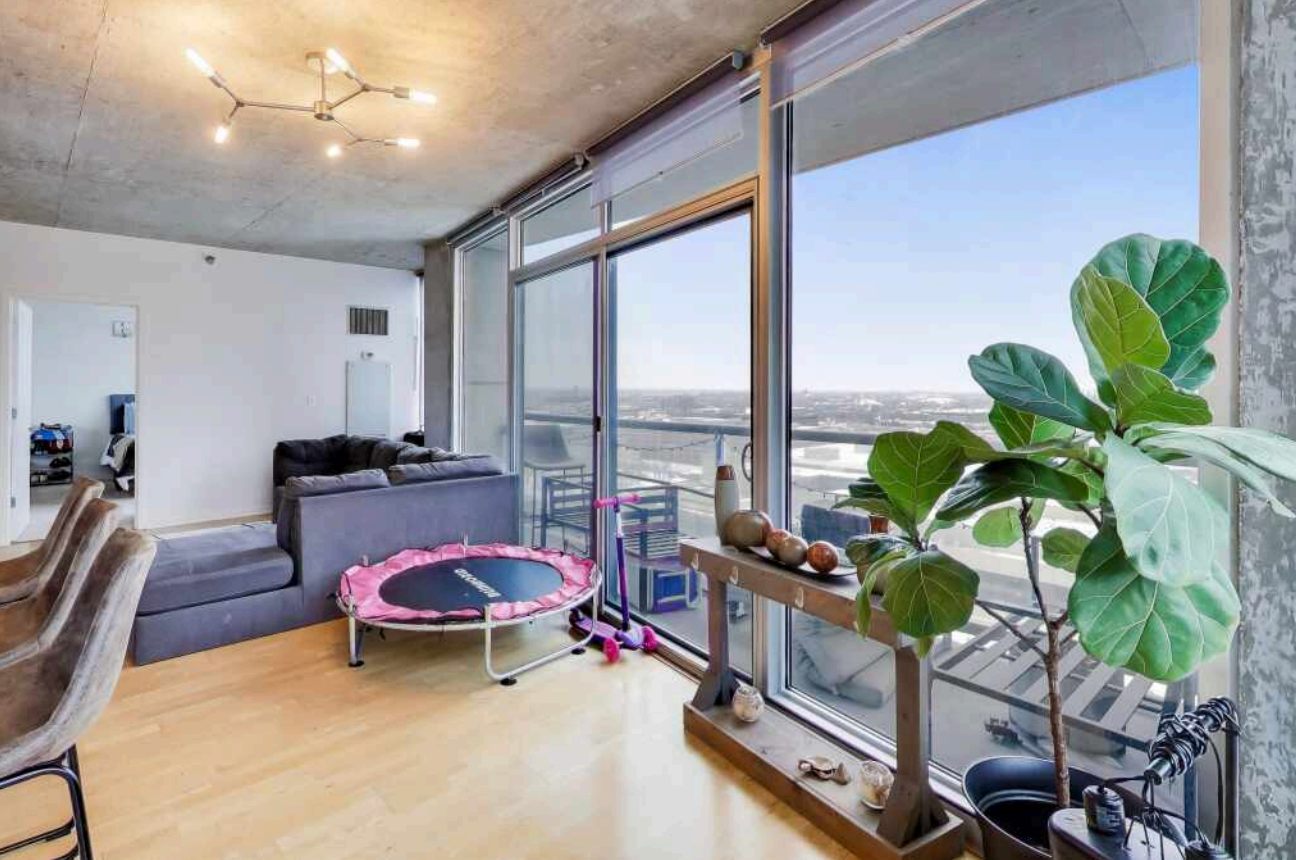


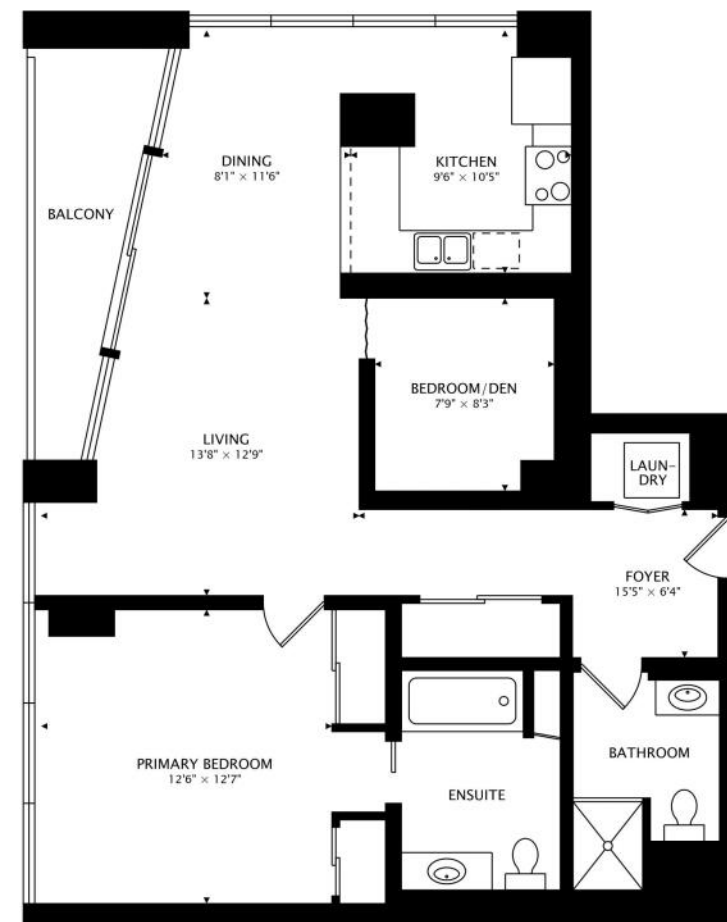
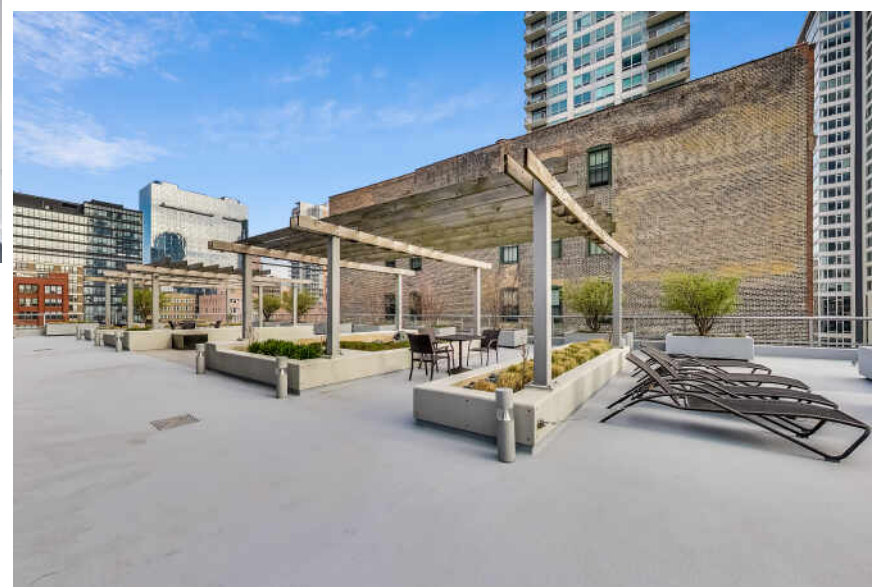
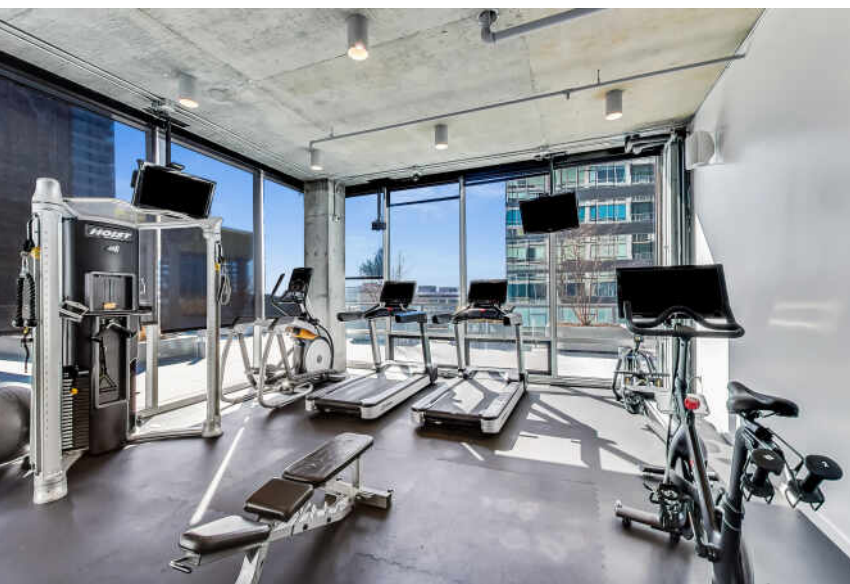
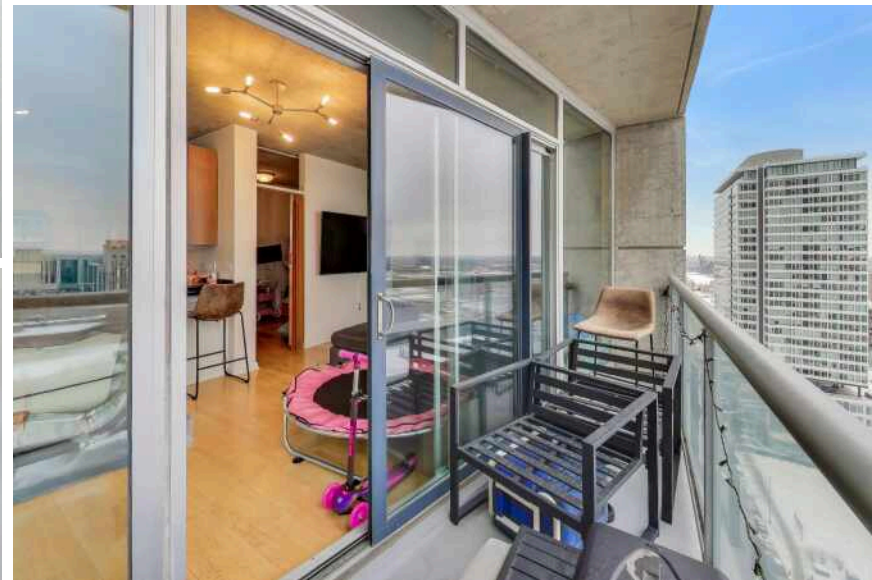


DOWNTON LIVING AT ITS BEST

Welcome home to this 2-bedroom, 2-bath condo in the heart of Chicago at 611 S Wells St, Unit 2104. This well-appointed residence features in-unit laundry and a private balcony, perfect for relaxing or entertaining with city views. The building offers desirable amenities including a fully equipped gym, sauna, and sundeck, providing a convenient, lifestyle-focused living experience. Residents also enjoy the added convenience of a sushi restaurant and an on-site convenience store directly attached to the building. The home includes one deeded parking space (PIN, Space #138), a rare and valuable feature in this prime location. Ideally situated near dining, shopping, transportation, and all that downtown Chicago has to offer, this condo combines comfort, convenience, and location.

2 BEDROOM
2 BATH
TAXES: \$7,768
ASSESSMENTS: \$778 / MONTH





985 sq ft + 66 sq ft BALCONY



CHARACTERIZED BY TOWERING HIGH RISES AND HISTORIC POCKETS THAT REFLECT THE AREA'S STORIED PAST, THE **SOUTH LOOP** IS A DISTINCTIVE CHICAGO NEIGHBORHOOD.

Chicago's original Gold Coast in the late 19th century, the South Loop was once home to the likes of Marshall Field, George Pullman, and Philip Armour. Today the vibrant neighborhood is known for its access to the lakefront, shops, restaurants, parks, Museum Campus, and The Loop.

The South Loop is comprised of several historic areas including Printer's Row, which features a number of buildings that have been converted into residential lofts, along with Motor Row District and Prairie Avenue District. Meanwhile, several apartment and condominium buildings are under construction, bringing thousands of new residences to the neighborhood.

The South Loop's housing boom has brought with it an influx of retailers along with eateries and nightlife on South Michigan Avenue. The Roosevelt Collection is a popular destination featuring a movie theater and an assortment of retailers.

Museum Campus is the cultural hub of the South Loop featuring attractions including the Field Museum, Shedd Aquarium, Adler Planetarium, and Soldier Field. Residents also enjoy being in close proximity to Northerly Island and public transportation including the CTA's Roosevelt station.



JOSEPH CLAY

708.639.1483

773.862.0200

JOSEPHCLAY@ATPROPERTIES.COM