

6122 SOUTH GREENWOOD AVE, UNIT #1S
HYDE PARK





ROOM DIMENSIONS

LIVING ROOM : 19' × 15'

DINING ROOM : 15' × 15'

KITCHEN : 17' × 16'

LAUNDRY ROOM : 3' × 5'

PRIMARY BEDROOM : 13' × 14'

SECOND BEDROOM : 10' × 11'

FOURTH BEDROOM | LOWER LEVEL : 12' × 9'

THIRD BEDROOM | LOWER LEVEL : 10' × 10'

FAMILY ROOM | LOWER LEVEL : 17' × 29'

STORAGE | LOWER LEVEL : 6' × 9'

UTILITY ROOM | LOWER LEVEL 8X7 : 8' × 7'

DECK : 14' × 10'

4 BEDROOM

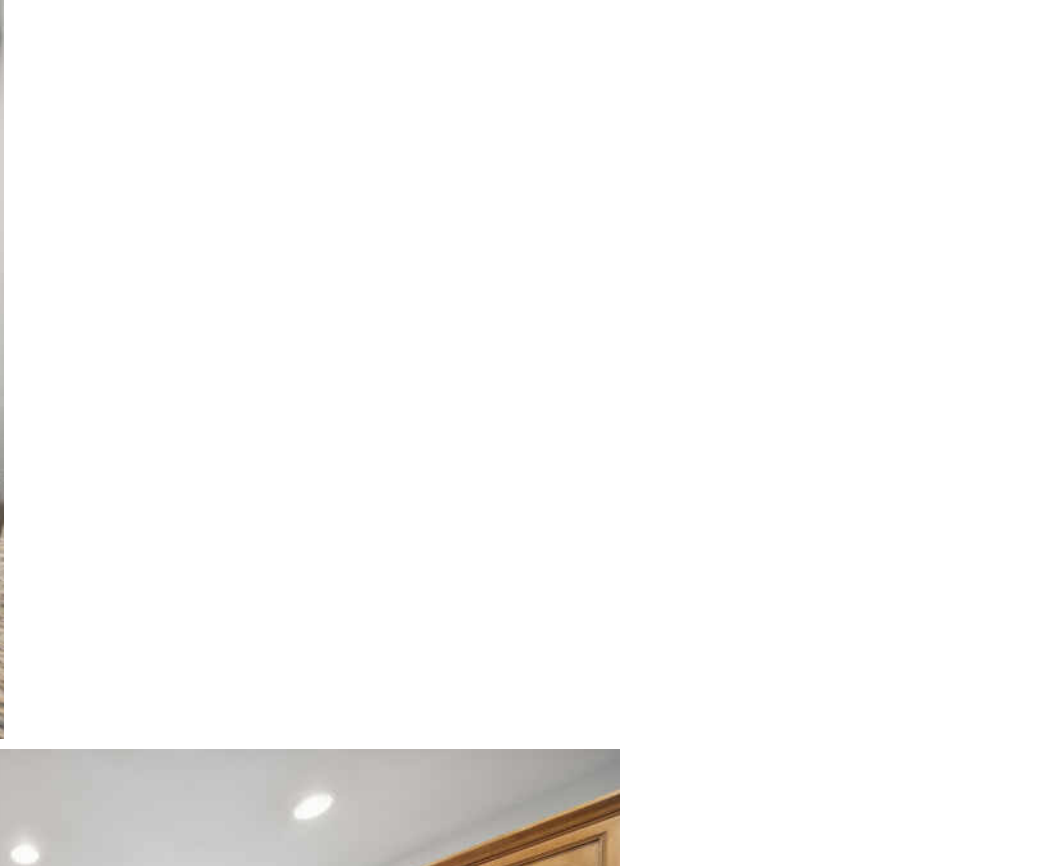
3 BATH

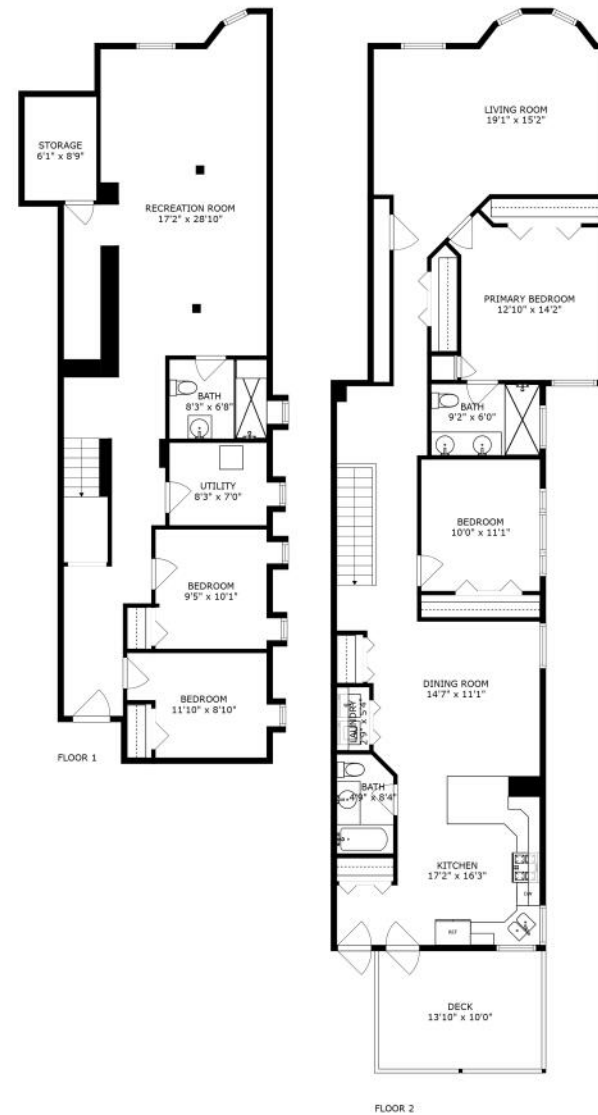
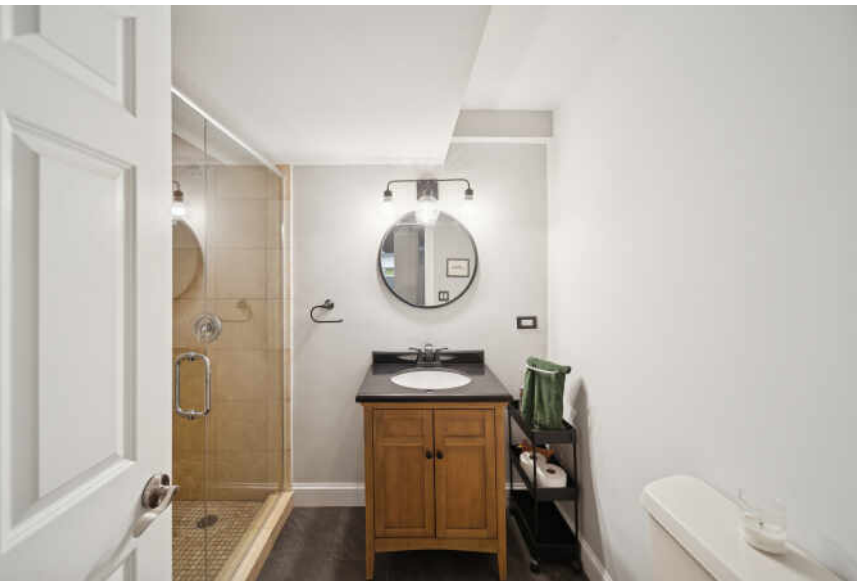
TAXES: \$6,497

ASSESSMENTS: \$585 / MONTH

WELCOME HOME.

Stylish Duplex in Prime University of Chicago location! Enjoy the feel of single-family living in this beautifully updated duplex down, ideally positioned on south U of C campus, in booming Woodlawn, and the soon-to-be-completed Obama Presidential Library. Tucked on a quiet block just off Midway Plaisance, this spacious residence offers the perfect balance of comfort, charm, and convenience. Inside, rich hardwood floors run throughout the main level, where you'll find a bright and welcoming living room with an abundance of natural light and overlooking a serene tree-lined street. The open-concept kitchen and dining area create a seamless space for everyday living or entertaining, with granite countertops, 42" cabinets with crown molding, and stainless steel appliances-including: refrigerator, microwave, range and dishwasher. On the main level you also have two well-sized bedrooms and two full baths, including the primary en-suite and side-by-side laundry. The lower level with sleek luxury vinyl offers even more space with a very large family room, two bedrooms, a full bathroom, and tons of storage-perfect for extra living space, guests, a gym, or creative space. Out back, you have a nice-sized deck and two private parking spaces. Located near all that we love about U of C and Hyde Park, dining at Truth Be Told, Bar David, coffee at Robust, local community gardens, the Dorchester Farmers Market, and friendly neighbors, this home offers the best of Woodlawn's community vibe with unbeatable access to parks, transportation, and Hyde Park amenities.





SIZES AND DIMENSIONS ARE APPROXIMATE, ACTUAL MAY VARY.



BETWEEN ENRICHING ART EXHIBITS AND MUSEUMS, A WORLD-RENOWNED UNIVERSITY, AND WELL-KEPT COMMUNITY GREEN SPACES, **HYDE PARK** HAS A LOT TO OFFER.

The lakefront neighborhood is home to the University of Chicago, which has one undergraduate college and five graduate research divisions. The university is the site of the Smart Museum of Art and the Oriental Institute, which draw visitors along with other cultural gems in the area including the Museum of Science and Industry and the DuSable Museum of African American History.

Green Space is another important characteristic of Hyde Park. Offering one of the best views of the Chicago skyline, the neighborhood has access to Promontory Point (aka The Point) – a man-made peninsula on Lake Michigan that connects to the Lakefront Path. There’s also Jackson Park, where residents can relax, watch sailboats, and play golf and tennis.

Hyde Park boasts pre-war high-rises, modern apartment buildings designed by renowned architect Jeanne Gang, and architecturally significant properties such as Frank Lloyd Wright’s Robie House. The neighborhood also offers new construction condominiums, lofts, townhomes, and single-family homes.



NAJA MORRIS

(312) 206-4587

NAJA@NAJAMORRIS.COM



MICHELLE BROWNE

(312) 217-6808

MBROWNE@ATPROPERTIES.COM



All specifications, features, designs, price, assessments, taxes and materials are subject to change without notice. Depicted floor plans and architectural renderings are only an artist's impression.

