

612 WATERS EDGE DRIVE  
SOUTH ELGIN



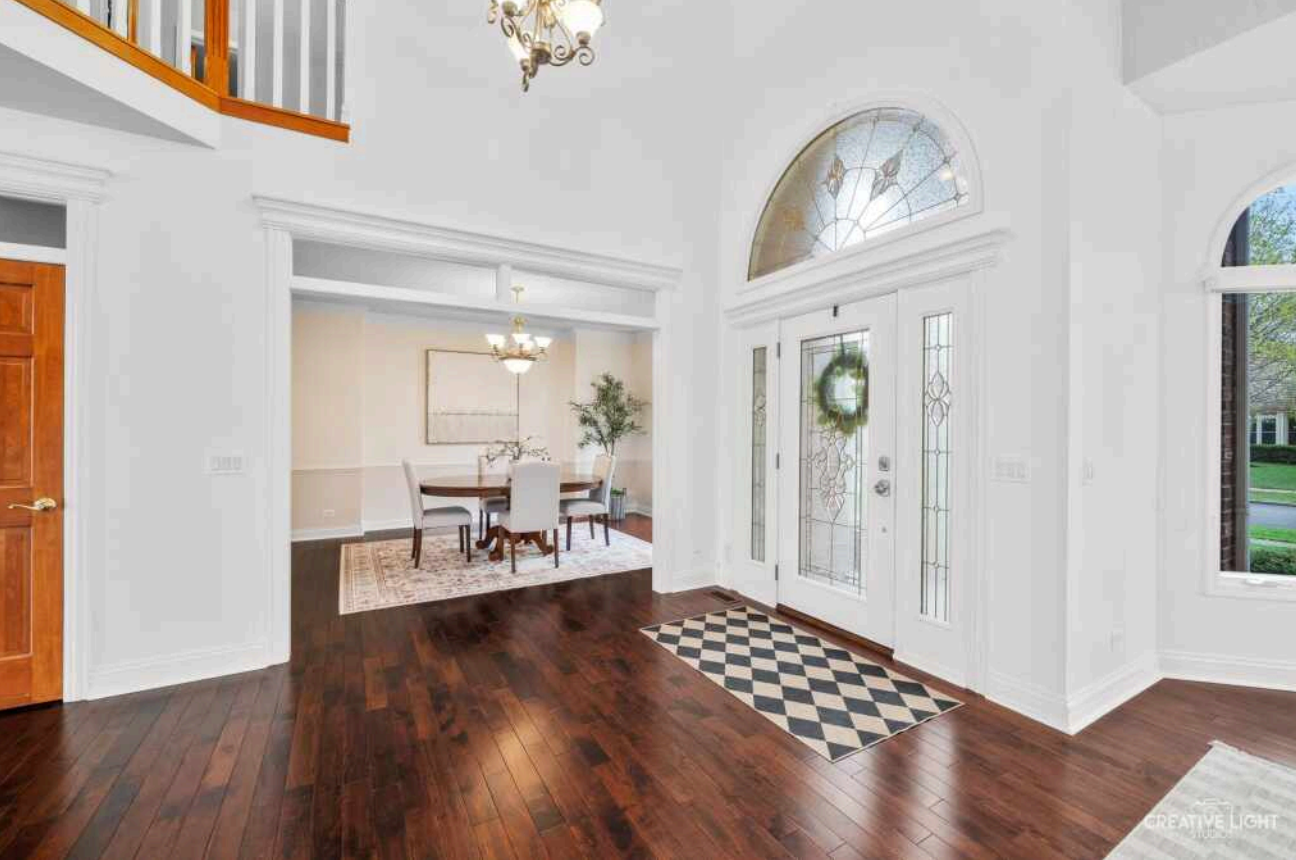


#### ROOM DIMENSIONS

- LIVING ROOM : 18' x 12'
- DINING ROOM : 16' x 12'
- KITCHEN : 23' x 16'
- FAMILY ROOM : 26' x 19'
- OFFICE : 13' x 12'
- LAUNDRY ROOM : 8' x 6'
- PRIMARY BEDROOM : 20' x 16'
- 2ND BEDROOM : 13' x 12'
- 3RD BEDROOM : 14' x 13'
- 4TH BEDROOM : 14' x 13'
- 5TH BEDROOM : 11' x 8'
- FAMILY ROOM - LOWER : 42' x 25'

**5 BEDROOM**  
**3.1 BATH**

Rare setting. Exceptional lifestyle. Unmatched opportunity. Homes with views like this do not come along often. This is your opportunity to get into one of Thornwood's most coveted streets, backing to a protected nature preserve with breathtaking views that stretch for miles. Properties in this setting rarely become available-and this one delivers space, light, and lifestyle in equal measure. With four bedrooms upstairs plus a fifth bedroom or flex space in the finished English basement, 3.1 baths, and a full basement bath, this home has the space and versatility buyers are looking for. Natural light floods every level, thanks to soaring vaulted ceilings, a thoughtful open layout, and a stunning wall of windows overlooking the preserve. A spacious eat-in kitchen serves as the central gathering space, complete with white cabinetry, a waterfall granite island, double ovens, and a walk-in pantry. The family room is warm and inviting with a cozy fireplace and uninterrupted views of the open space beyond. A first-floor office away from the main living areas with custom built-ins and wainscoting provides a private work-from-home retreat. Upstairs, the primary suite features vaulted ceilings and a private bath with dual sinks, whirlpool tub, and separate shower. The finished basement expands your living space with a large recreation room, full bath, fifth bedroom (or flex room), and generous storage. Recent improvements include a new furnace, brand new hot water heater, a newly installed fully fenced backyard with refreshed landscaping, new epoxy garage flooring, new top-of-the-line washer and dryer. Outside, enjoy outdoor living with a deck and paver patio overlooking a large backyard that backs directly to nature - no neighbors behind you, just views and tranquility. A sprinkler system and 3-car side-load garage complete the home. All of this is set within the highly sought-after Thornwood community, featuring a clubhouse, pool, sport courts, and miles of scenic trails, and is located within the St. Charles School District.



CREATIVE LIGHT



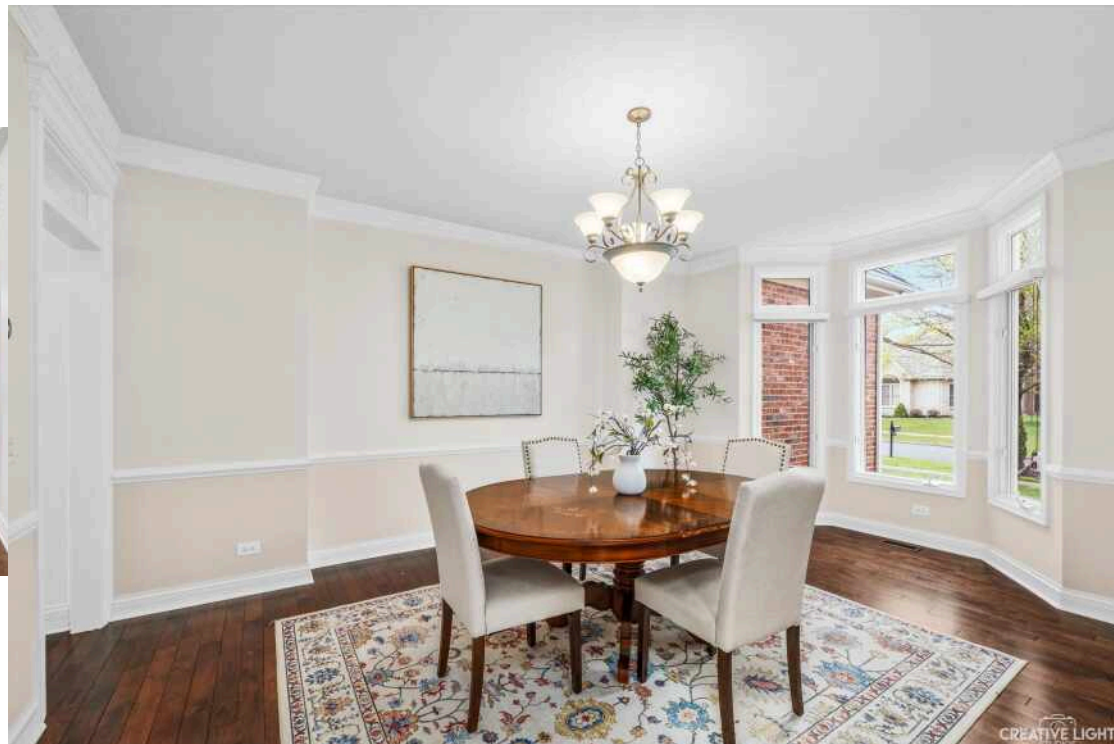
CREATIVE LIGHT STUDIOS



CREATIVE LIGHT



CREATIVE LIGHT



CREATIVE LIGHT







CREATIVE LIGHT  
STUDIOS



CREATIVE LIGHT  
STUDIOS



CREATIVE LIGHT  
STUDIOS



CREATIVE LIGHT  
STUDIOS



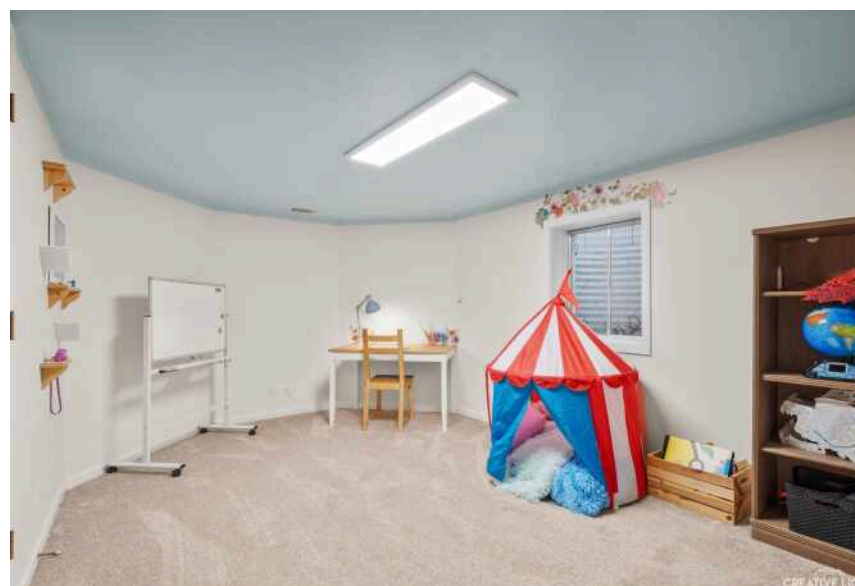
CREATIVE LIGHT  
STUDIOS



CREATIVE LIGHT  
STUDIOS



CREATIVE LIGHT  
STUDIOS







## DALIA METZGER

(630) 538-4361

630-377-1700

DALIAMETZGER@ATPROPERTIES.COM

**DM**  
DALIA METZGER  
**DM**

**@properties** | **CHRISTIE'S**  
INTERNATIONAL REAL ESTATE