

6135 N MELVINA AVENUE
SOUTH EDGEBROOK





ROOM DIMENSIONS

LIVING ROOM : 29' × 12'
 FAMILY ROOM : 16' × 14'
 KITCHEN : 15' × 12'
 PRIMARY BEDROOM : 23' × 15'
 SECOND BEDROOM : 13' × 10'
 THIRD BEDROOM : 12' × 10'
 SITTING ROOM : 15' × 11'
 WALK-IN CLOSET : 13' × 13'
 BASEMENT : 42' × 22'

SUBSTANTIALLY REMODELED BRICK ENGLISH IN ONAHAN SCHOOL DISTRICT

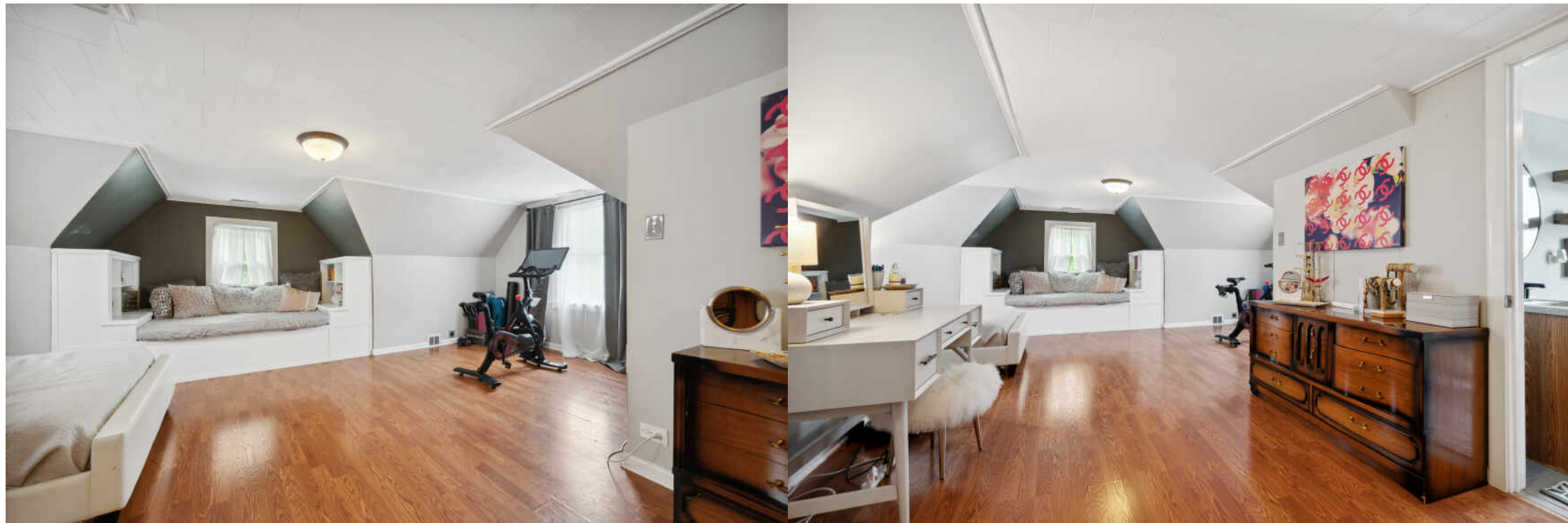
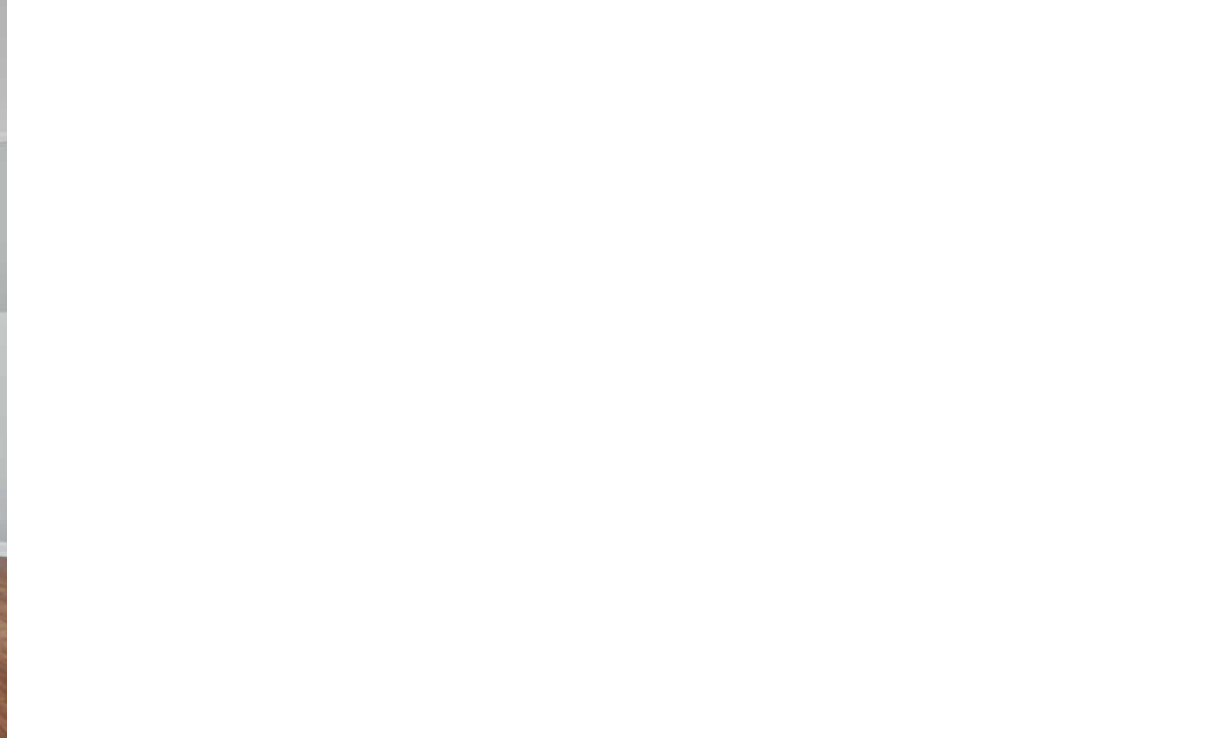
- Gorgeous 3BR/2BA in South Edgebrook has all the sexy updates AND unsexy work already done
- The entire living/kitchen space has been completely reimagined for that open concept
- Stunning kitchen boasts custom all wood Medallion cabinetry with soft close drawers, pull out shelves, pantry, undermounted lighting, quartz countertops & backsplash, Samsung/Bosch appliances with direct vented range hood & Restoration Hardware brass hardware
- Separate family room, featuring heated porcelain tile floors, is located on the same floor and not in the basement.
- 2nd level is the enormous primary suite that can easily accommodate a king-sized bed, a huge organized walk-in closet, a 2nd hall closet and a nicely appointed primary bathroom
- 2nd & 3rd bedrooms are both generously sized
- Updated 2nd full bathroom includes subway tile surround, mosaic marble floor tiles, soaker tub and a granite bathroom vanity
- Full unfinished 900+ sq ft basement with 7' ceilings & steel beams waiting for your ideas
- Manicured backyard with concrete stamped patio and the 2.5 car garage with party door
- Almost every element of this home (roof, gutters, soffits, tuckpointing, mechanicals, appliances, plumbing, electrical etc. etc. ETC.) have all been updated within the last 8 years
- Walk to the elementary school, Indian Road Park, forest preserve/bike path, Whelan Aquatic Center, restaurants & shops

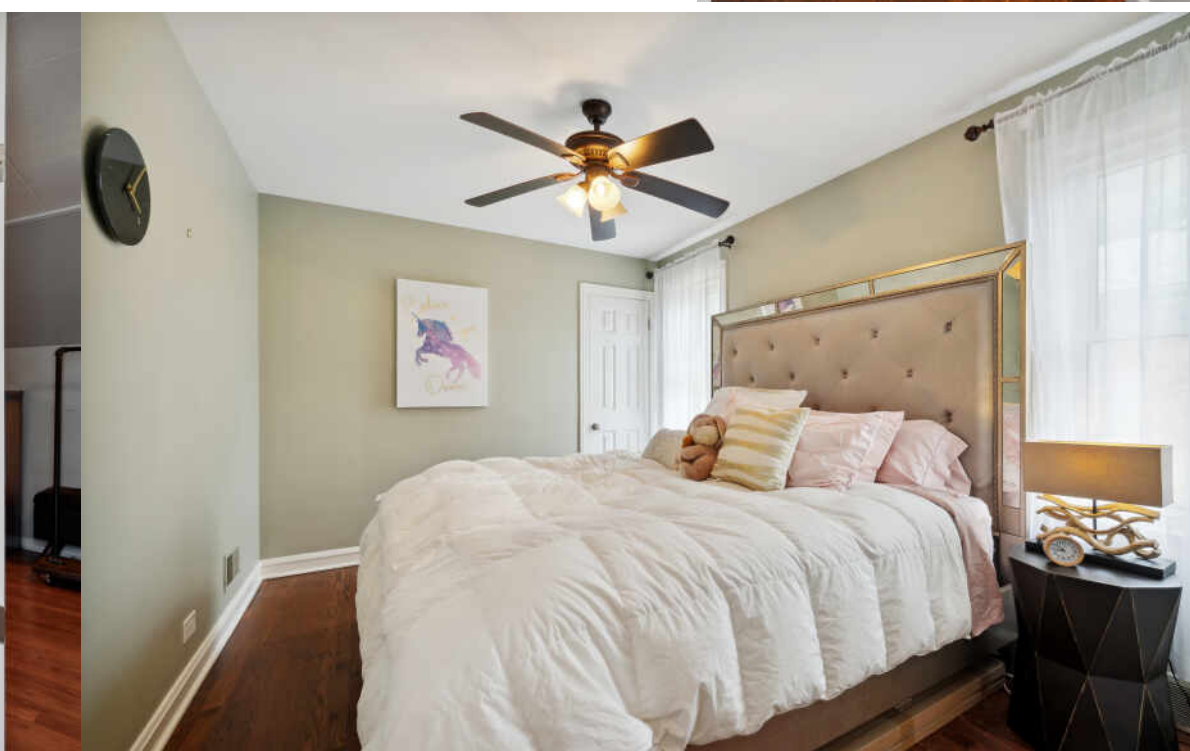
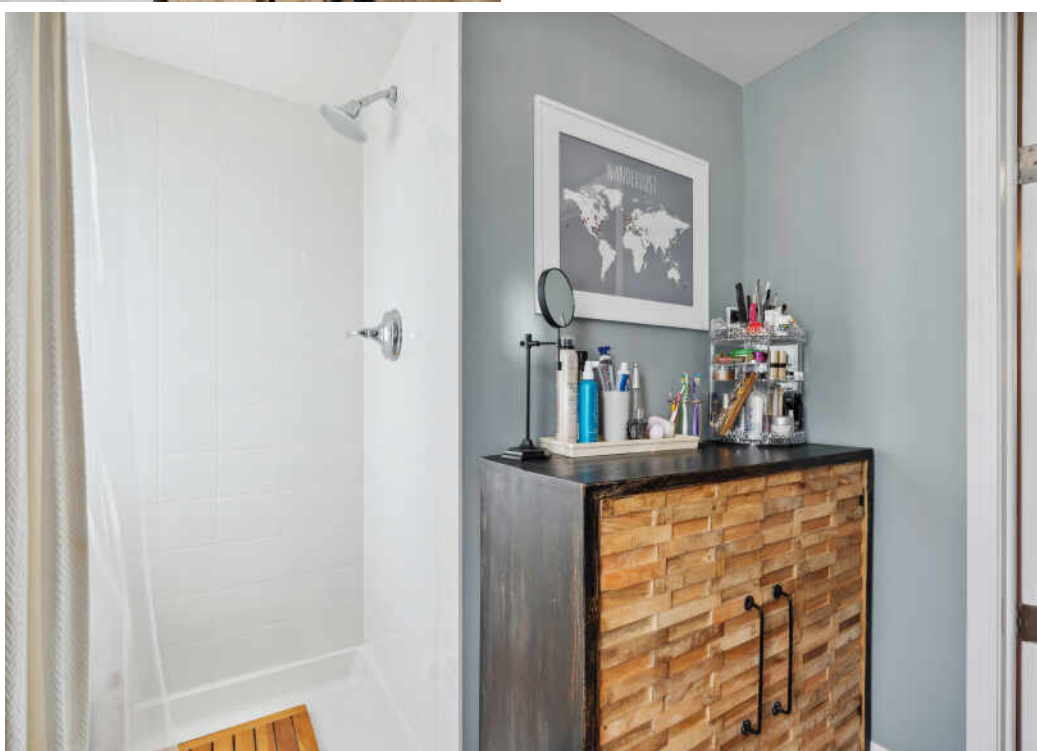
3 BEDROOM
 2 BATH
 TAXES: \$4,880

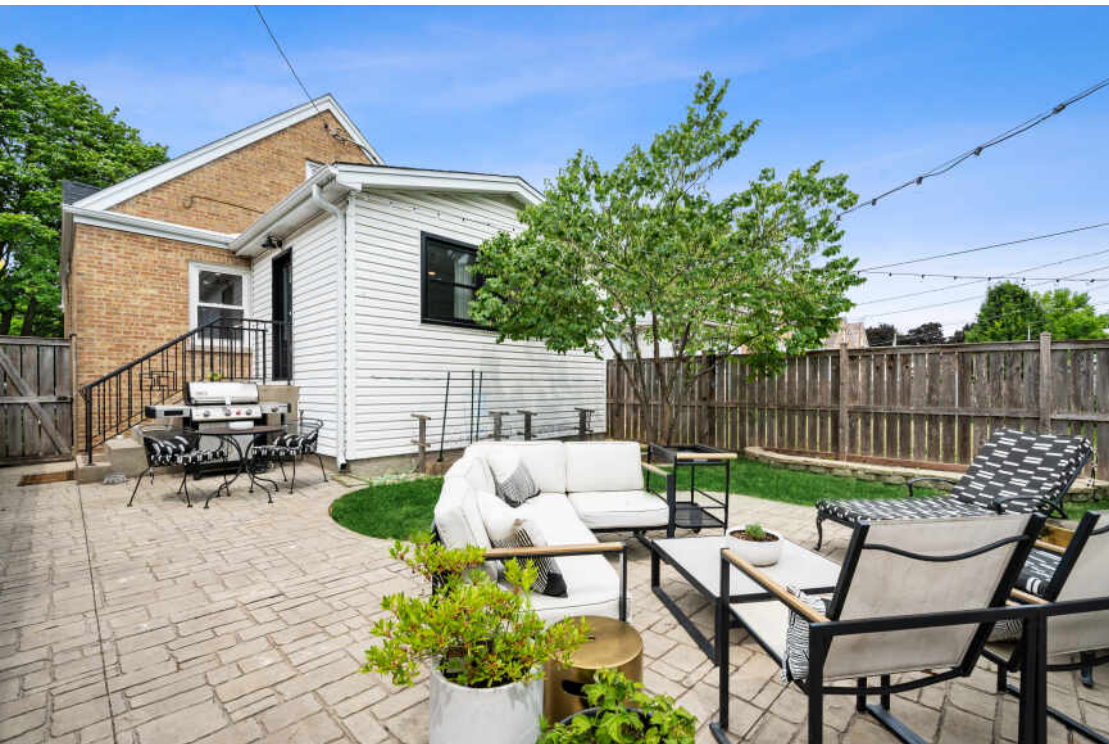
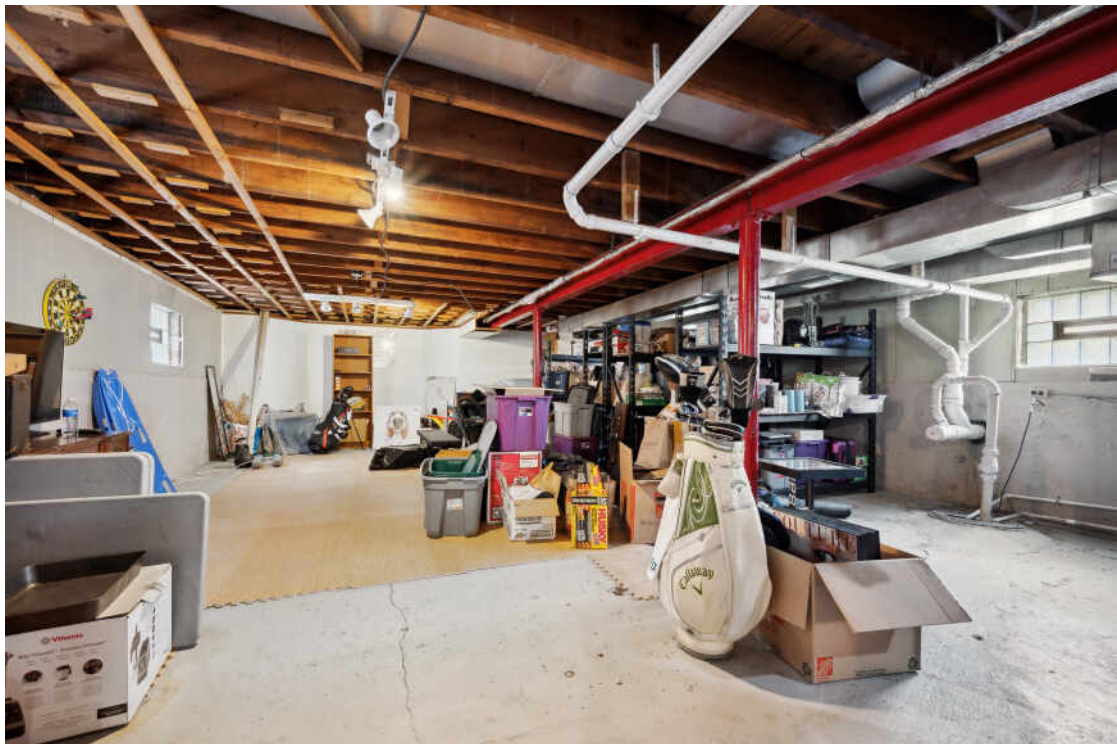
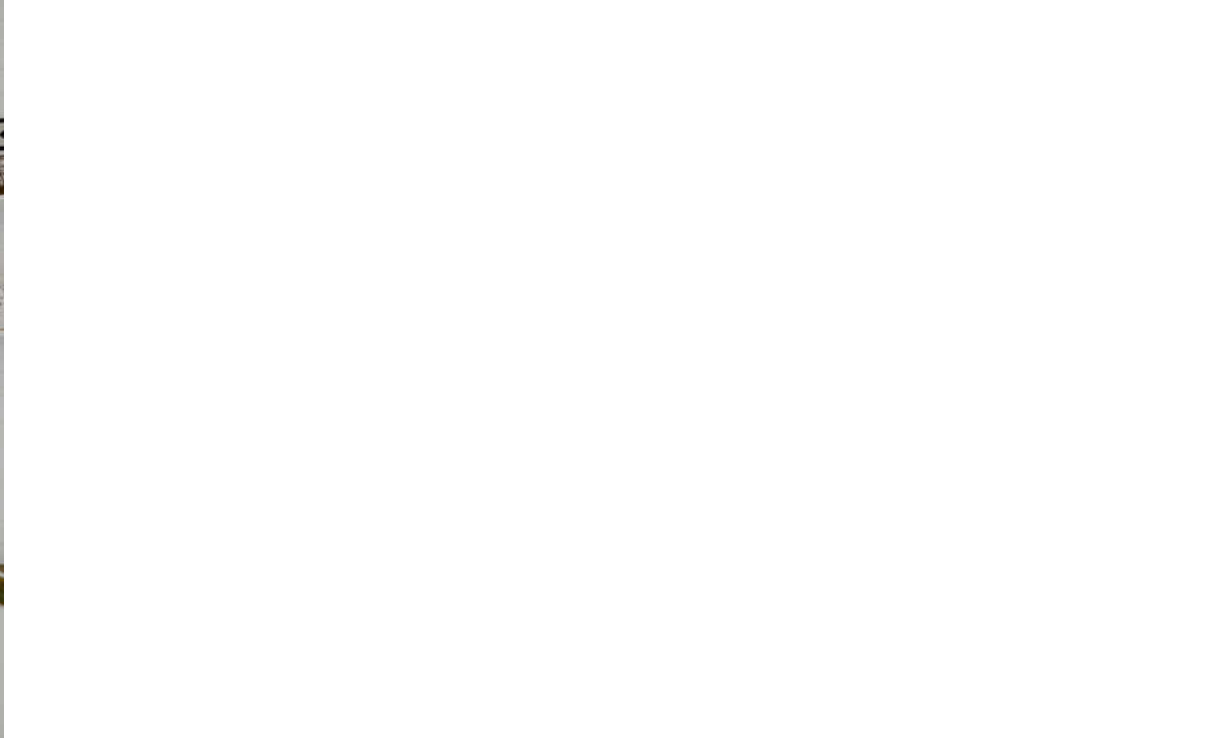


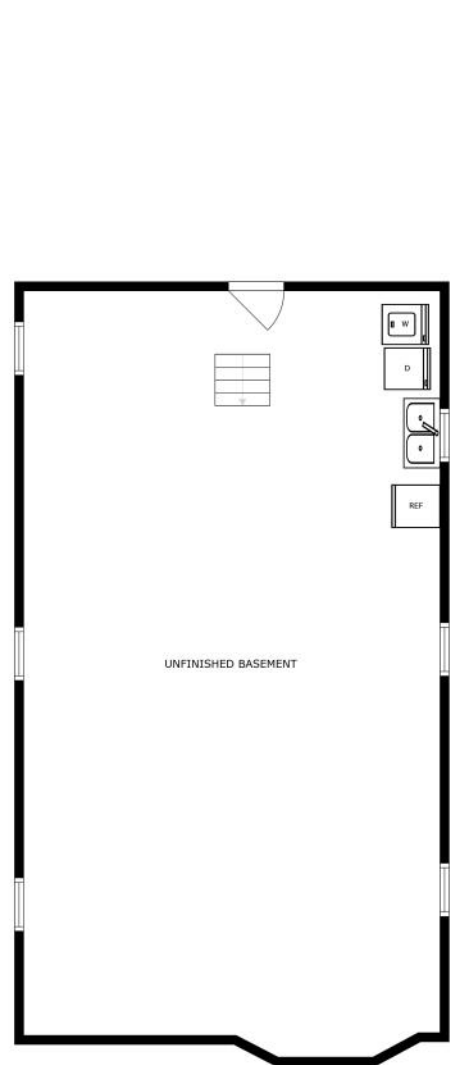




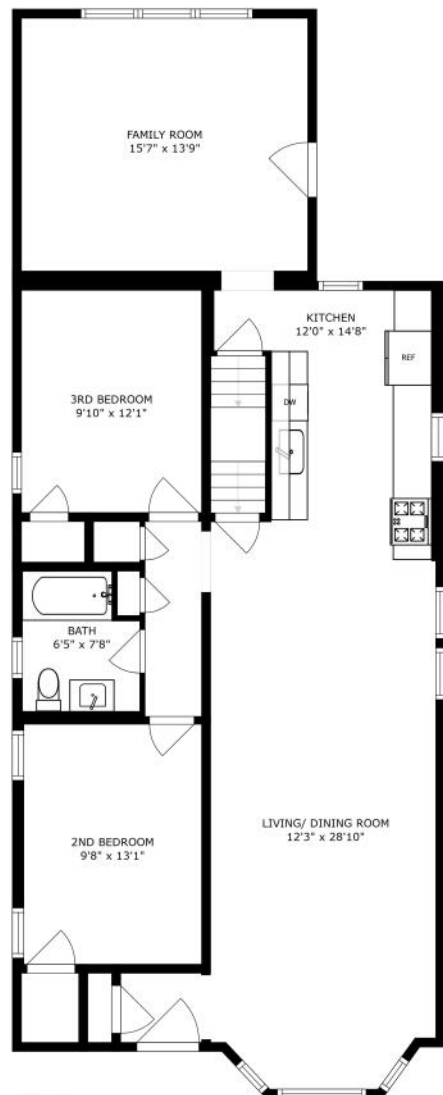




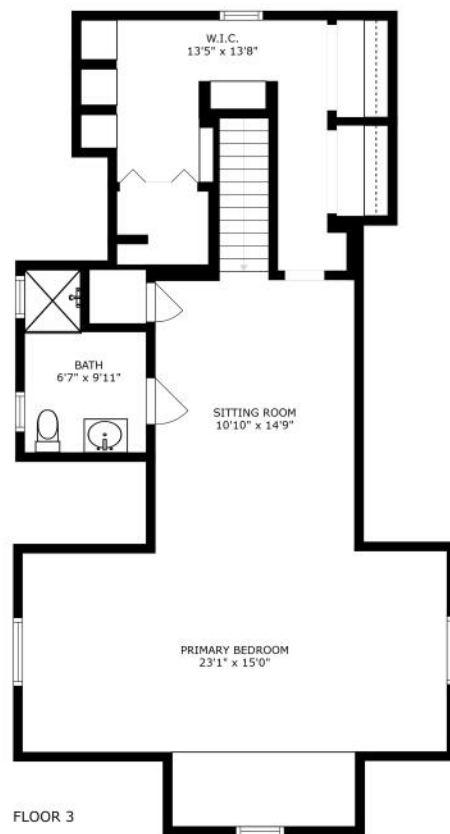




FLOOR 1

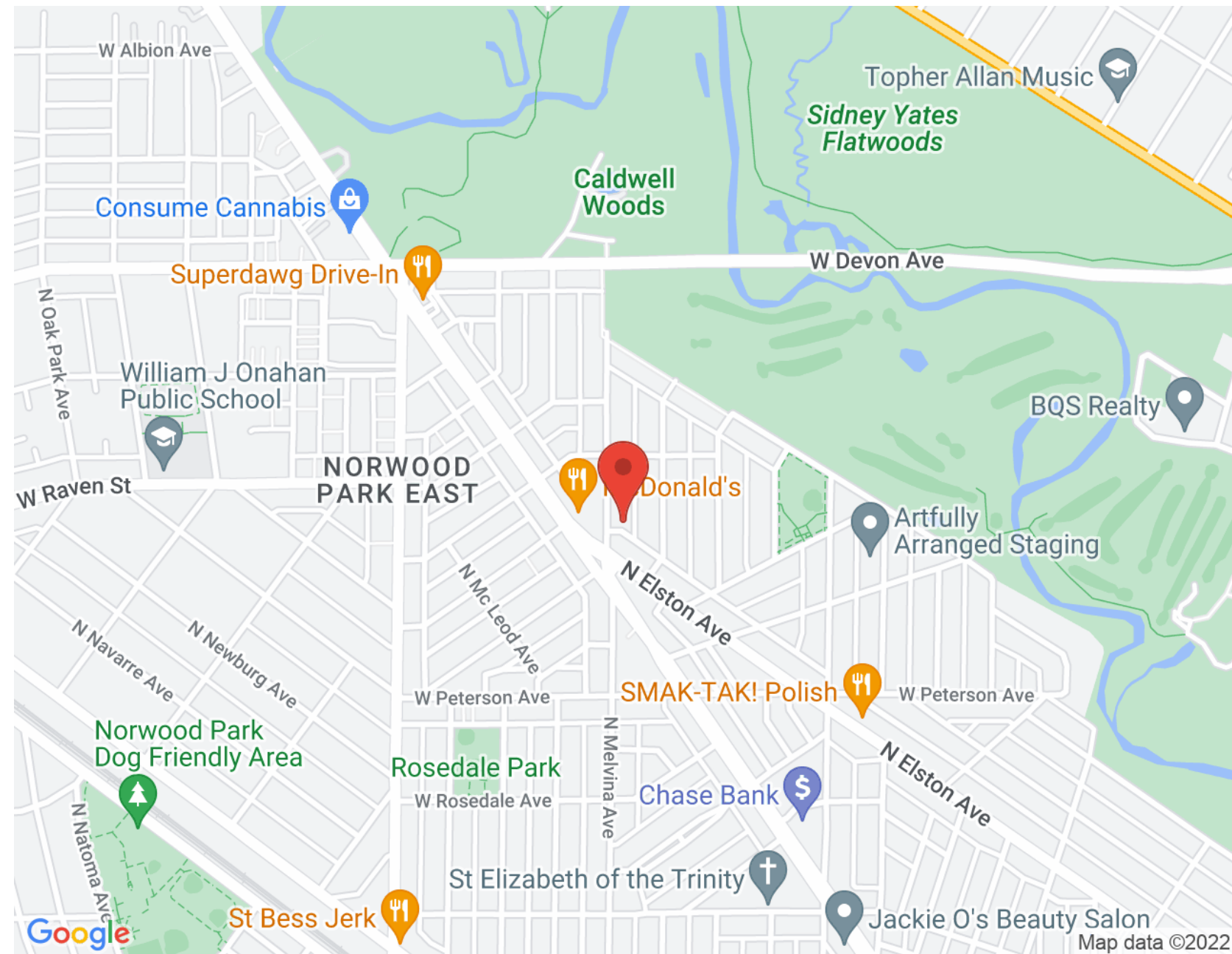


FLOOR 2



FLOOR 3

SIZES AND DIMENSIONS ARE APPROXIMATE, ACTUAL MAY VARY.





K.C. LAU

MOBILE (312) 315-7163

KCLAU@ATPROPERTIES.COM

WWW.ATPROPERTIES.COM/SITE/KCLAU



LUKE REILLY

MOBILE (512) 826-5660

LUKEREILLY@ATPROPERTIES.COM

THE
CHICAGO
COLLABORATIVE



CHRISTIE'S
INTERNATIONAL REAL ESTATE

6135NMELVINA.INFO