

**613 N PAULINA STREET 2**  
WEST TOWN





#### ROOM DIMENSIONS

LIVING ROOM : 20' × 13'

DINING ROOM : 10' × 9'

KITCHEN : 12' × 10'

MASTER BEDROOM : 14' × 12'

SECOND BEDROOM : 11' × 10'

DECK : 10' × 10'

PANTRY : 5' × 5'

WALK-IN CLOSET : 6' × 5'

2 BEDROOM

2 BATH

TAXES: \$6630

ASSESSMENTS: \$115

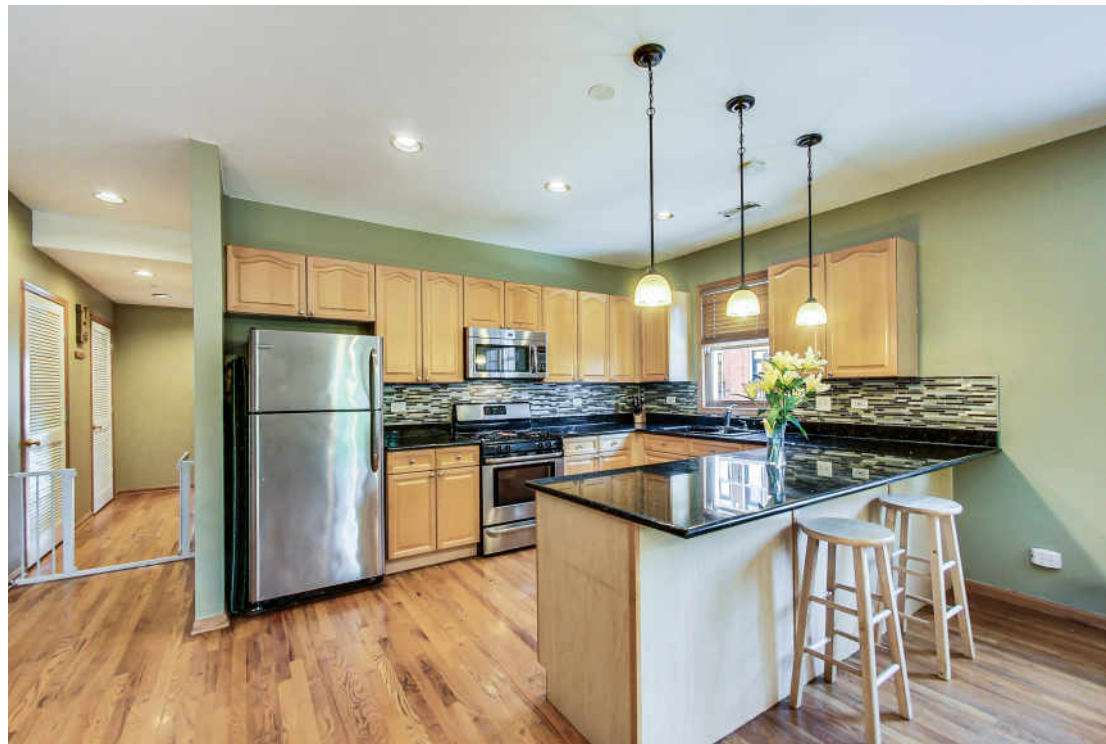
## MAKE YOUR NEXT HOME IN WEST TOWN!

Spacious 2 bed, 2 bath condo in a corner building the has natural light on 3 sides. Sunny living room with gas fireplace open with large kitchen with granite peninsula that's large enough for dining. Kitchen has abundant cabinet space plus walk-in pantry. Master suite with walk-in closet and private bath. Full second bath and second bedroom with custom closet organizer.

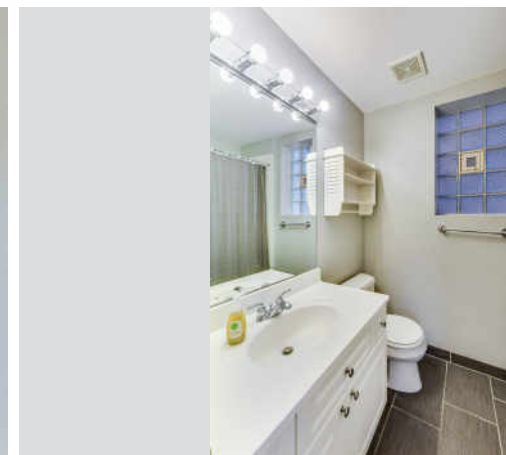
Just steps away from the heart of West Town with all it's amenities and public transportation.

- Hardwood floors through-out
- Newer Stainless Steel Appliances (2014)
- In-unit washer/dryer
- Garage parking with extra storage
- Private deck through slider in master bedroom
- Tech home: control temp, lights, locks with your phone
- Low association fee in well maintained building

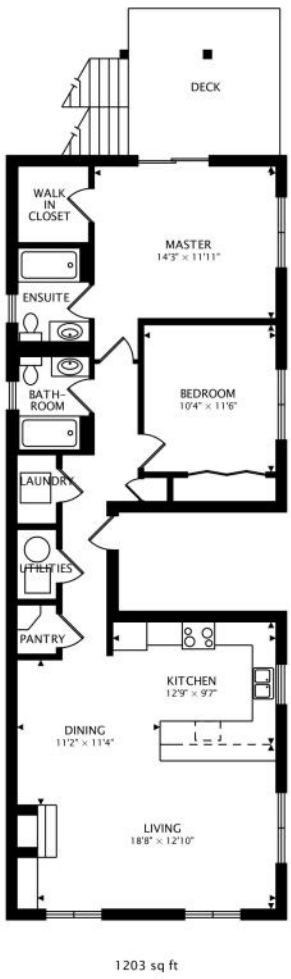


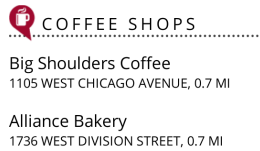













 **HOSPITALS**

Rush University Medical Center  
1620 WEST HARRISON STREET, 1.2 MI

 TRANSIT  
Ashland  
CTA - GREEN LINE, 0.5 MI  
Division  
CTA - BLUE LINE, 0.7 MI

Western Ave  
METRA - MILWAUKEE DISTRICT NORTH,  
1.0 MI

Ogilvie Transportation  
METRA - MILWAUKEE DISTRICT WEST,  
1.7 MI

[illegible]



## CARRIE GOODMAN

(847) 542-9445

CARRIEGOODMAN@ATPROPERTIES.COM

WWW.CARRIEGOODMANHOMES.COM



## MARK EAST

(224) 715-4127

847-797-0200

MARKEAST@ATPROPERTIES.COM

WWW.MARKEASTFORHOMES.COM



613NPAULINA2.INFO