

6146 N OLCOTT AVENUE
NORWOOD PARK





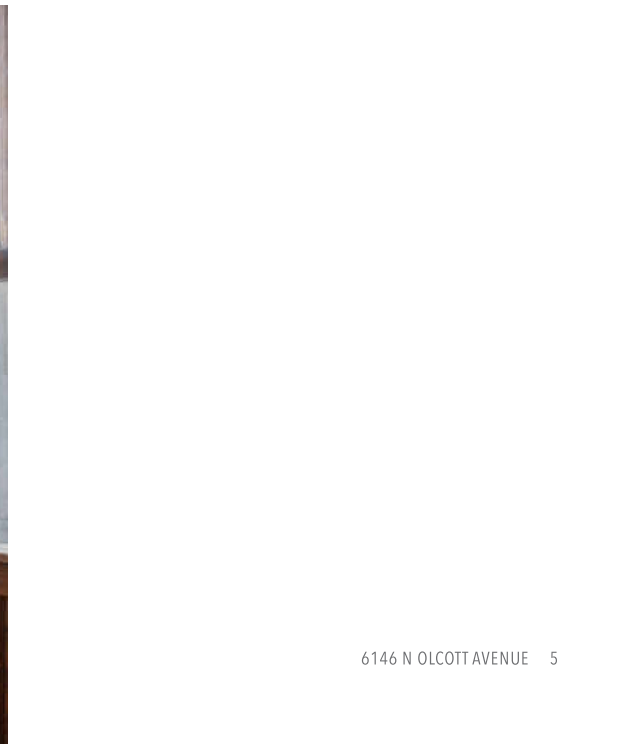
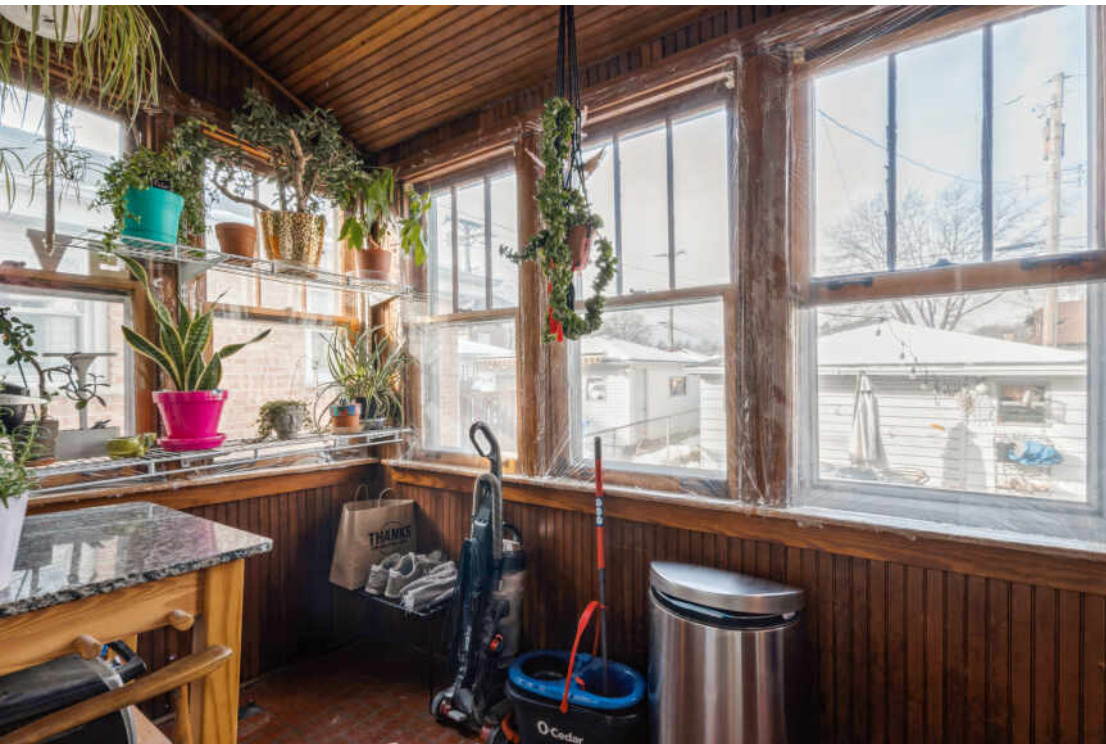
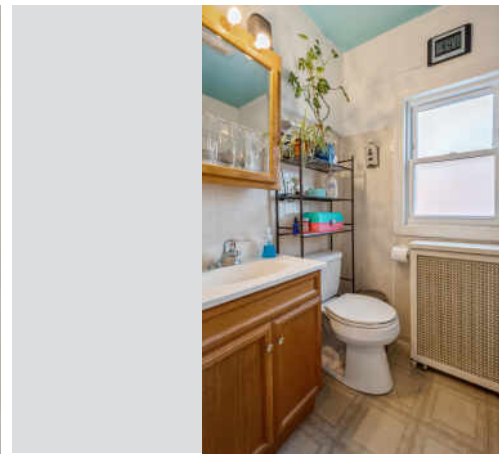
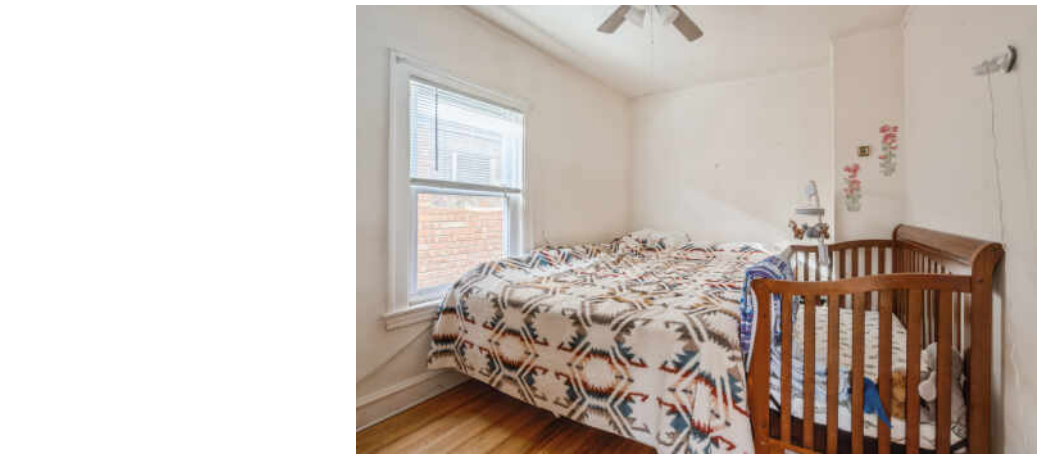
ROOM DIMENSIONS

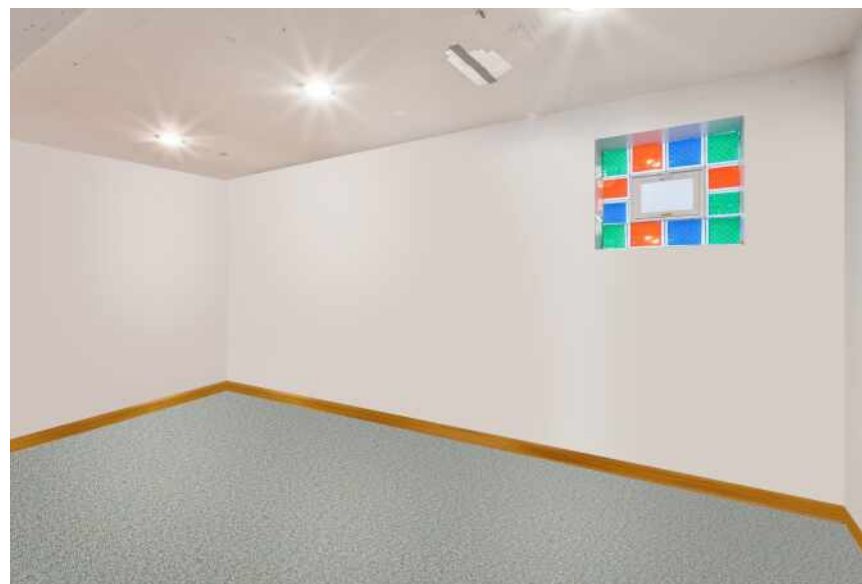
LIVING ROOM : 14' × 10'
KITCHEN : 12' × 10'
PRIMARY BEDROOM : 12' × 10'
SECOND BEDROOM : 10' × 8'
FAMILY ROOM : 20' × 15'
UTILITY ROOM : 6' × 9'
STORAGE : 8' × 11'
FOYER : 5' × 6'
ENCLOSED PORCH : 5' × 9'

2 BEDROOM
2 BATH
TAXES: \$4,156

PERFECT NORWOOD PARK RANCH HOME

Cute and cozy home! This 2 bed 2 bath ranch is for a starter home. Ideal for a builder to do new construction! Steps to Edison Park grammar school. This home is extremely well taken care of and loved. Featuring an enclosed porch and finished basement with laundry room, open recreational room, huge bathroom and utility room. Property has two car garage. No appliances. Sold as-is.







A MIX OF HISTORY, RECREATION, GREEN SPACE, AND LOCAL ESTABLISHMENTS MAKE **NORWOOD PARK** AN EXCITING PLACE TO CALL HOME.

The neighborhood’s historic district features unique curved streets surrounding expansive estates and vintage single-family homes. It’s also home to the Noble-Seymour-Crippen House, which is considered the oldest existing building in Chicago and today serves as the Norwood Park Historical Society Museum.

Norwood Park’s suburban feel is largely due to its variety of housing stock and spacious lots, which are situated on tree-lined streets that provide an idyllic retreat from Chicago’s urban landscape. Homes include bungalows, ranch homes, and spacious two-story houses.

Spanning more than 16 acres, Norwood Park’s eponymous park offers various sports and art programs as well as the Chicago Park District’s only outdoor pool with a water slide on the North Side. The park also boasts a fitness center, dog park, tennis courts, and an outdoor inline skating area, and hosts special events such as outdoor movie nights and Halloween parties. Nearby forest preserves give residents plenty of other opportunities to get outside.

Local restaurants bring diverse bites and dining experiences to the neighborhood. Meanwhile, a handful of pubs and bars offer late night entertainment, so there’s always something to do.

Residents enjoy easy access to public transportation via the Norwood Park Metra station and the CTA Blue Line.



NOTES _____

[illegible]



LISA M. FOSTER

(312) 804-3465

LMF@ATPROPERTIES.COM

WWW.ATPROPERTIES.COM/AGENTS/LISAFOSTER



CHRISTIE'S
INTERNATIONAL REAL ESTATE

6146NOLCOTTAV.INFO