

# 615 LAUREL AVENUE

WILMETTE







ROOM DIMENSIONS

- LIVING ROOM : 17' × 33'
- FAMILY ROOM : 13' × 17'
- DINING ROOM : 15' × 16'
- KITCHEN : 11' × 19'
- PRIMARY BEDROOM : 12' × 15'
- SECOND BEDROOM : 14' × 16'
- THIRD BEDROOM : 14' × 14'
- FOURTH BEDROOM : 11' × 13'
- FIFTH BEDROOM : 12' × 18'
- PLAYROOM/LOFT : 18' × 20'
- STORAGE/BASEMENT : 28' × 33'

5 BEDROOM

3.1 BATH

TAXES: \$25,421

BEAUTIFUL EAST WILMETTE HOME

Laurel Avenue hosts the best block party in east Wilmette!

Gracious home on super deep lot is situated in easy distance to Gilson Park, Wilmette Beach, Linden Avenue L offering Purple Line Express to city, cute shops and pizzeria just a couple blocks away.

Home has generous room sizes and perfect flow and features classic wood-burning fireplace flanked by built-in bookshelves and original leaded glass windows in large living room.

Relax on your front screened porch with your morning coffee and evening glass of wine.

Open floor plan from living room to dining room to sun-drenched family room overlooking large yard.

Cheerful kitchen with updated stainless steel appliances and white cabinetry. Step outside to paver patio and great area for grilling.

Upstairs, four bedrooms include primary suite with sitting room homeowners called "The Fort".

Hardwood floors under carpeting in all four 2nd floor bedrooms.

Stunning new primary bath recently completed plus second hall bath serving three additional 2nd floor bedrooms.

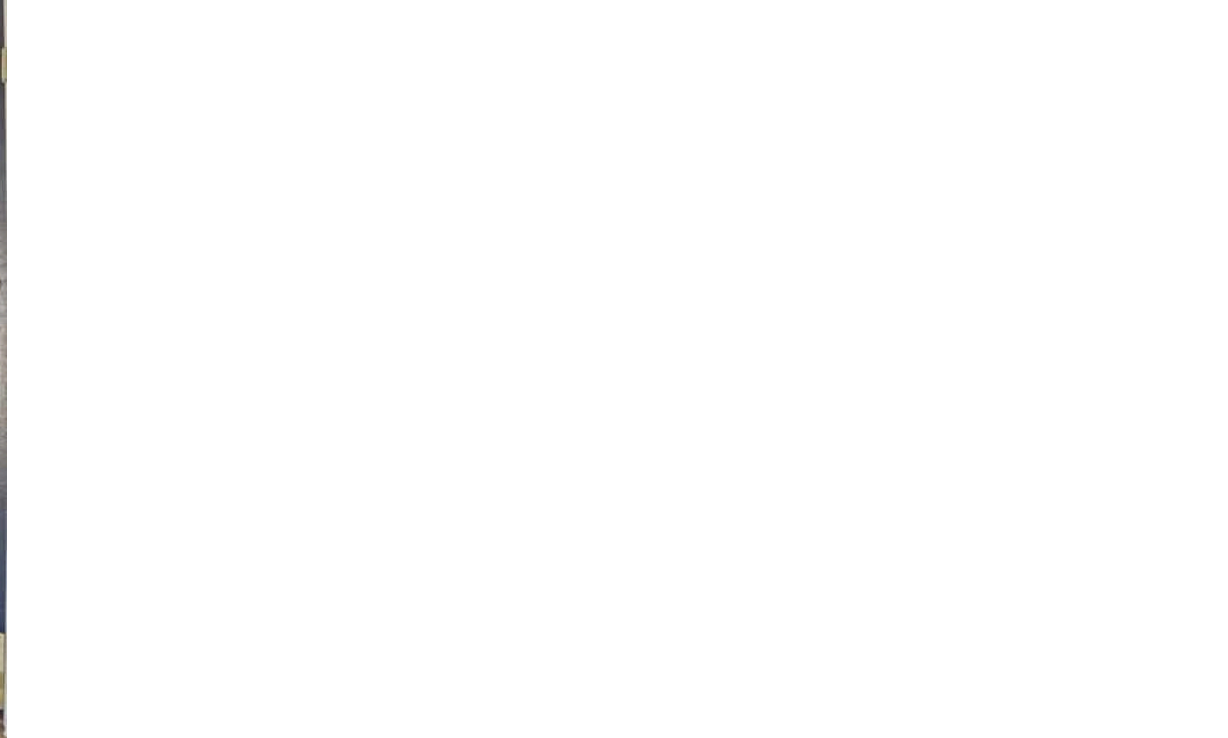
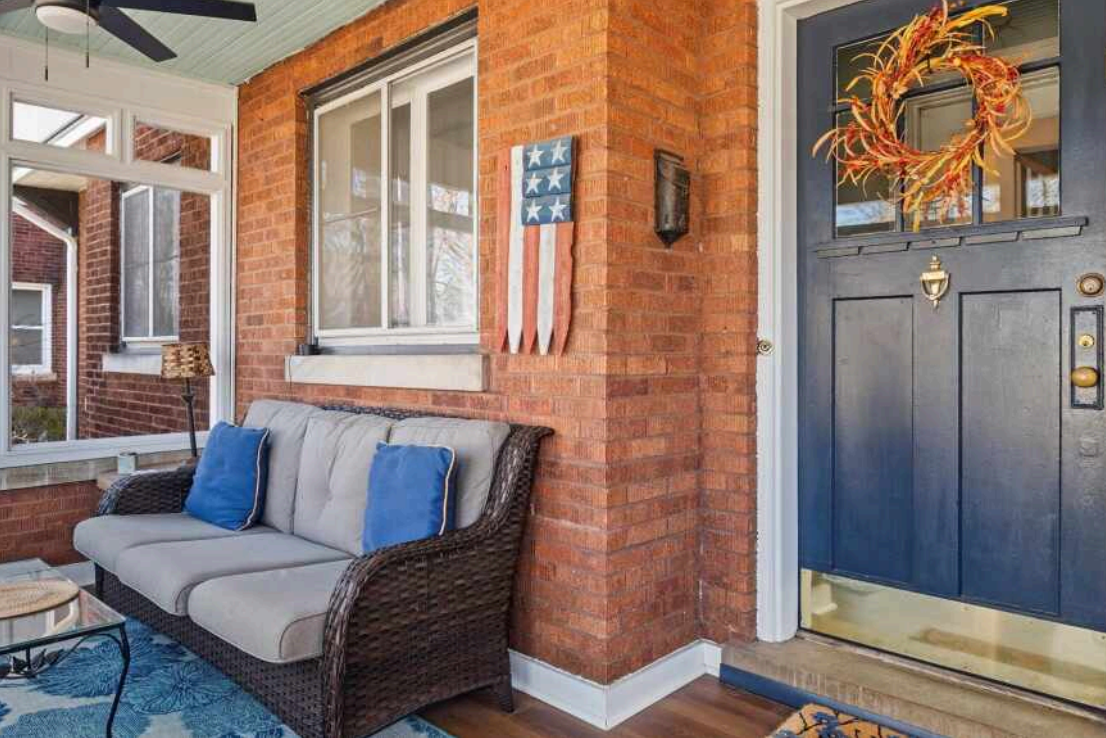
Finished third floor offers perfect home office space, playroom, guest suite with 5th bedroom and 3rd full bath.

Since 1915 when the home was built to today, homeowners of 615 Laurel have used their basement for abundant storage, workroom and laundry.

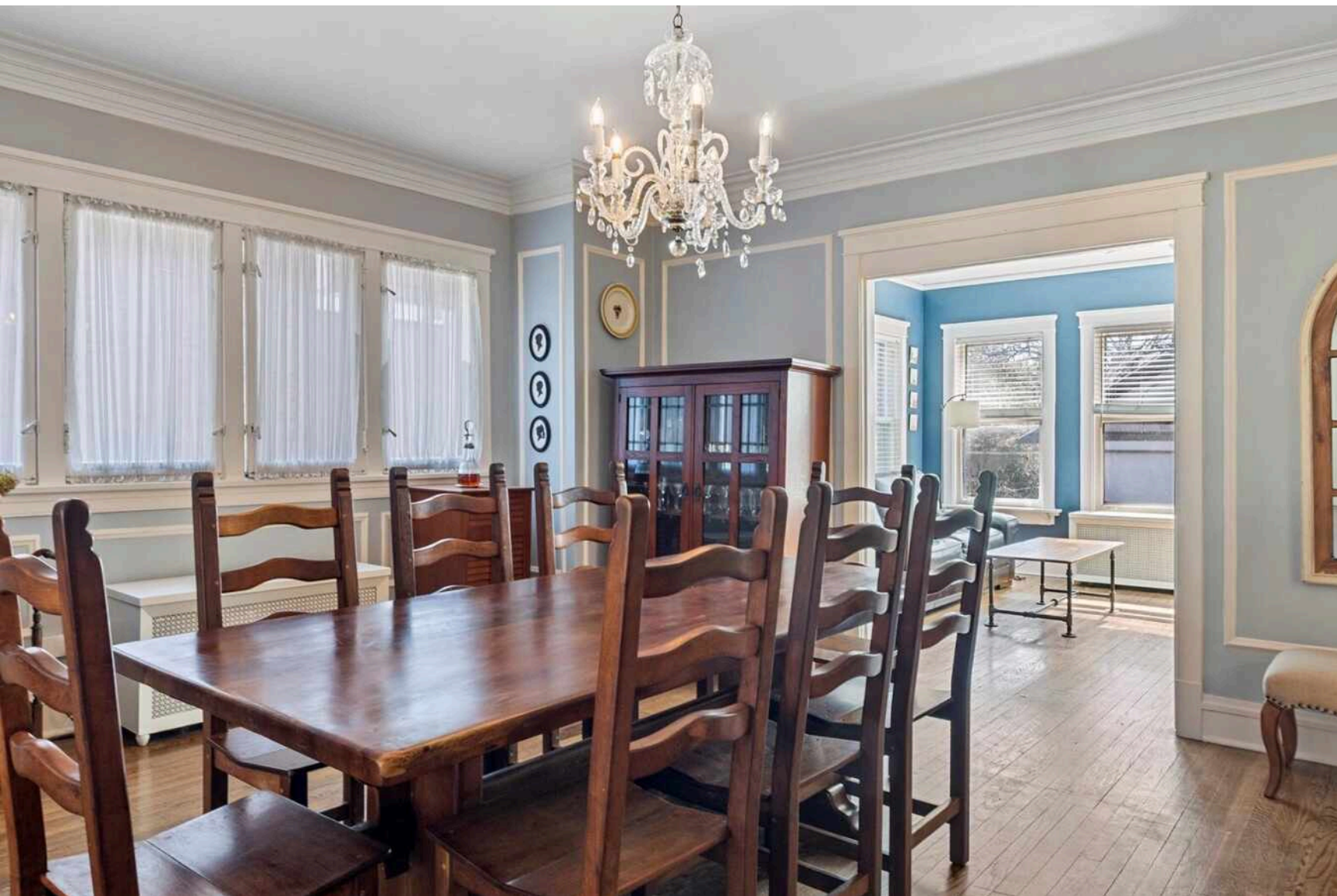
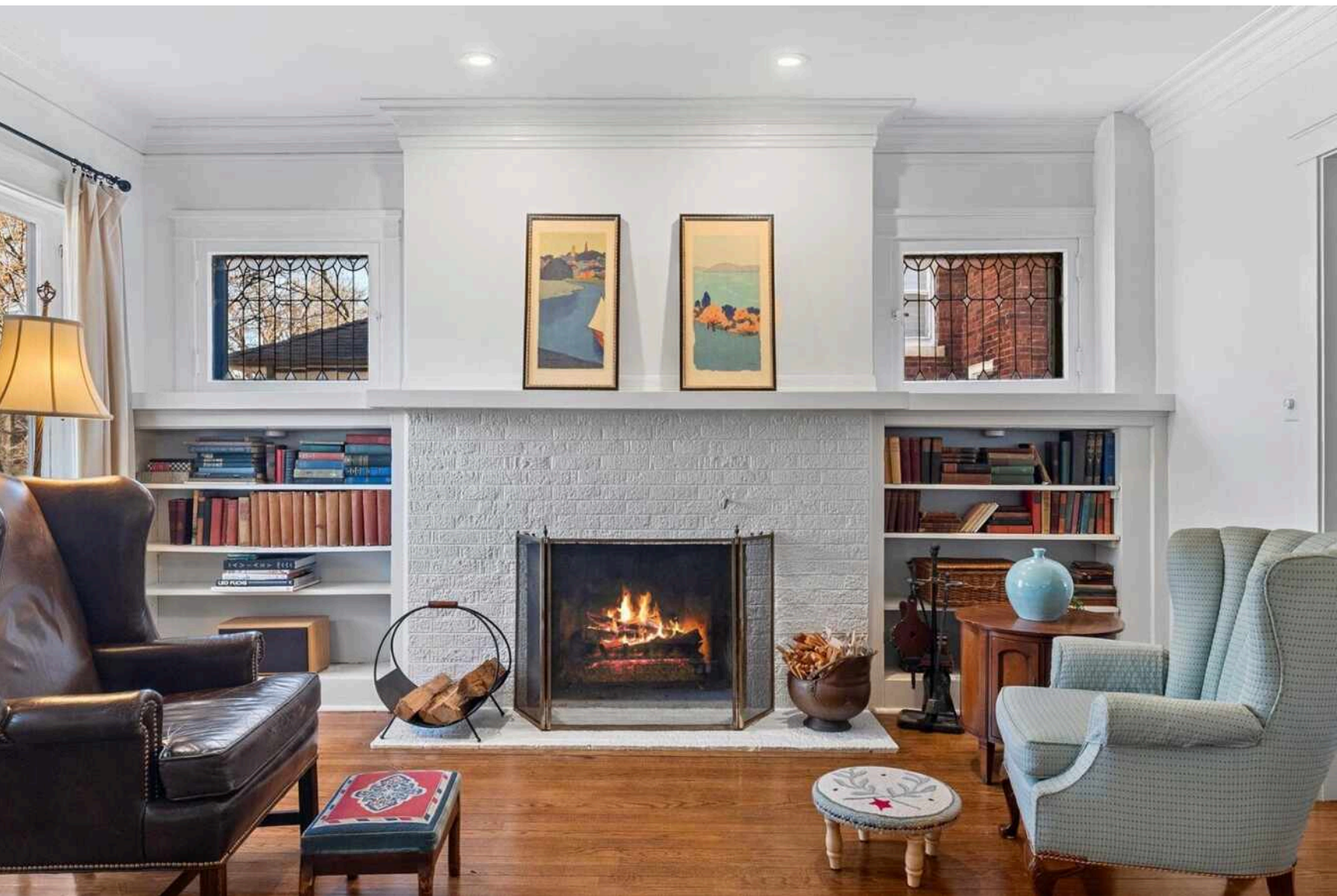
New homeowners can finish basement as neighbors with same model have done or set up third floor loft as Playroom.

615 Laurel is the essence of a well-loved home on a super-deep lot in a perfect east location.

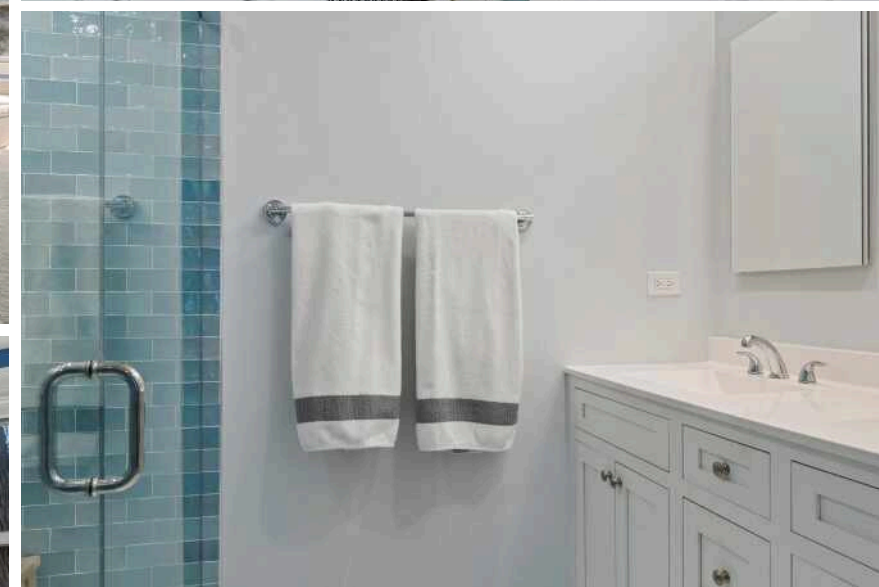
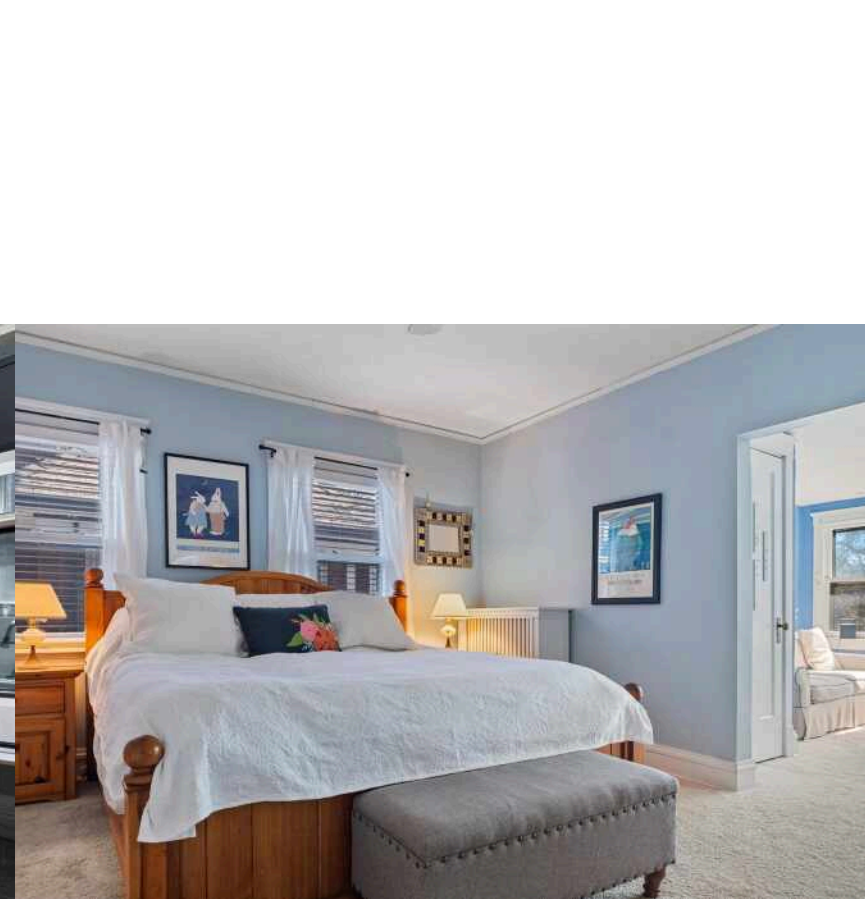
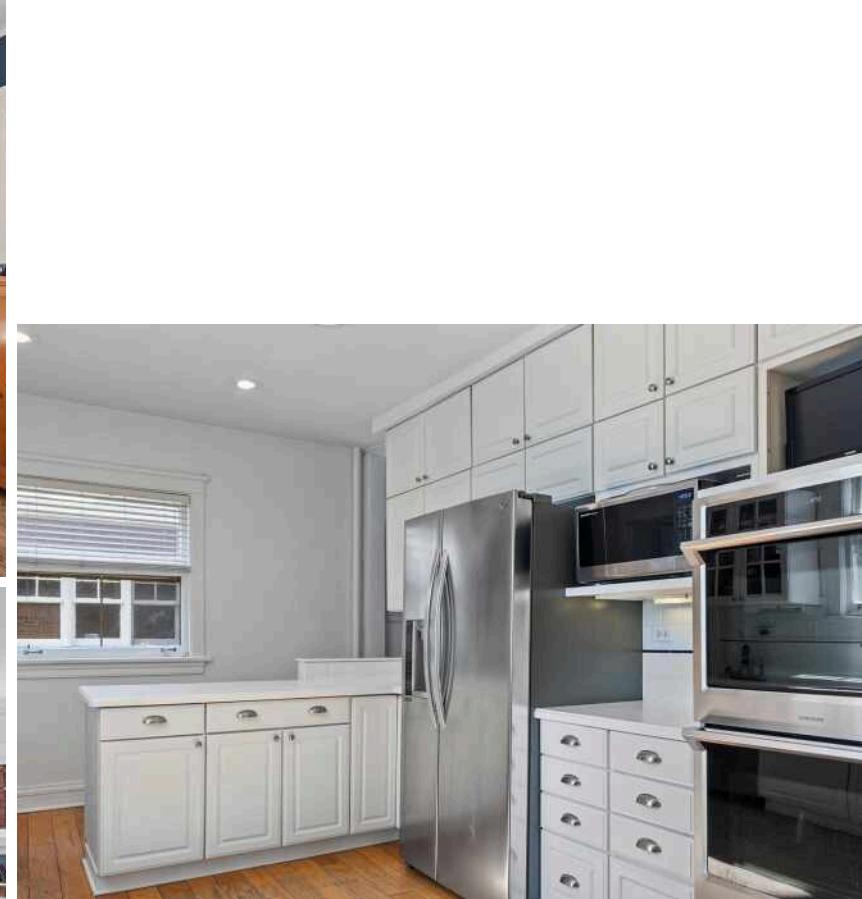




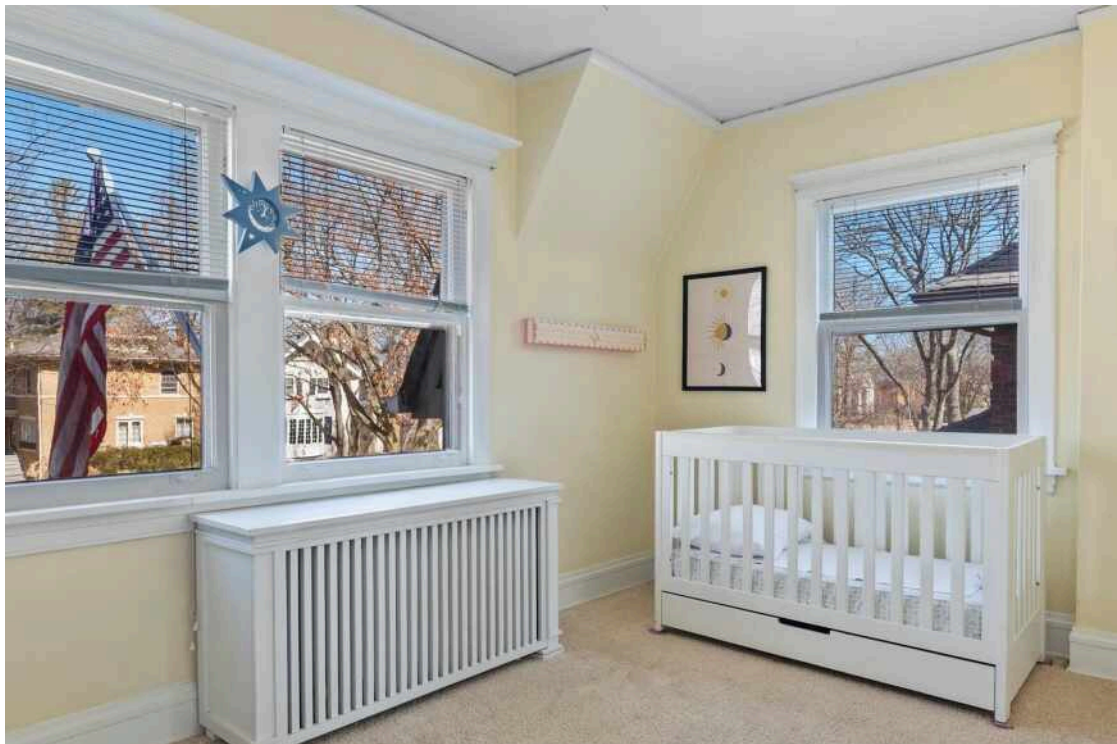




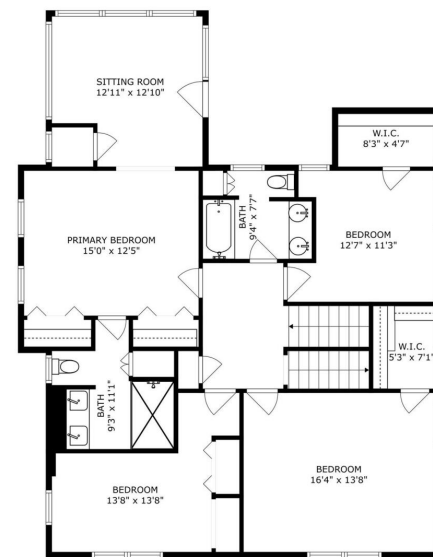








SIZES AND DIMENSIONS ARE APPROXIMATE, ACTUAL MAY VARY.



SIZES AND DIMENSIONS ARE APPROXIMATE, ACTUAL MAY VARY.





RANKED BY *CHICAGO* MAGAZINE AS ONE OF THE CHICAGO AREA'S BEST PLACES TO LIVE, **WILMETTE** IS A VIBRANT TOWN WITH A WEALTH OF AMENITIES.

When it comes to housing, there's no shortage of architectural styles and price points in this lakefront community. Quintessential Cape Cod, Victorian, and Colonial homes line the village's historic streets, many of which are paved with clay-fired bricks from the 1800s. In addition to single-family homes, there are beachfront condominiums and townhomes. While well-kept homes maintain Wilmette's rich architectural history in all of its glory, new construction attests to the village's enduring popularity.

Residents also have access to nationally recognized New Trier High School, located in Winnetka.

Wilmette's Metra station and access to I-94 make commuting to downtown Chicago a breeze, but there's plenty of reasons to stay local. At the heart of town is the Village Center, where you'll find specialty stores, restaurants, and the Wilmette Theatre. Along Sheridan Road there is Plaza del Lago, providing more shops and services to locals. Meanwhile, ample recreational activities are available at Gillson Park and beach, Wilmette Harbor, and the Centennial Recreation Complex, which includes swimming, tennis, and ice skating.





NOTES





## CHERYL WALDSTEIN

(847) 975-4756

847-892-4800

CHERYLWALDSTEIN@ATPROPERTIES.COM



All specifications, features, designs, price, assessments, taxes and materials are subject to change without notice. Depicted floor plans and architectural renderings are only an artist's impression.

