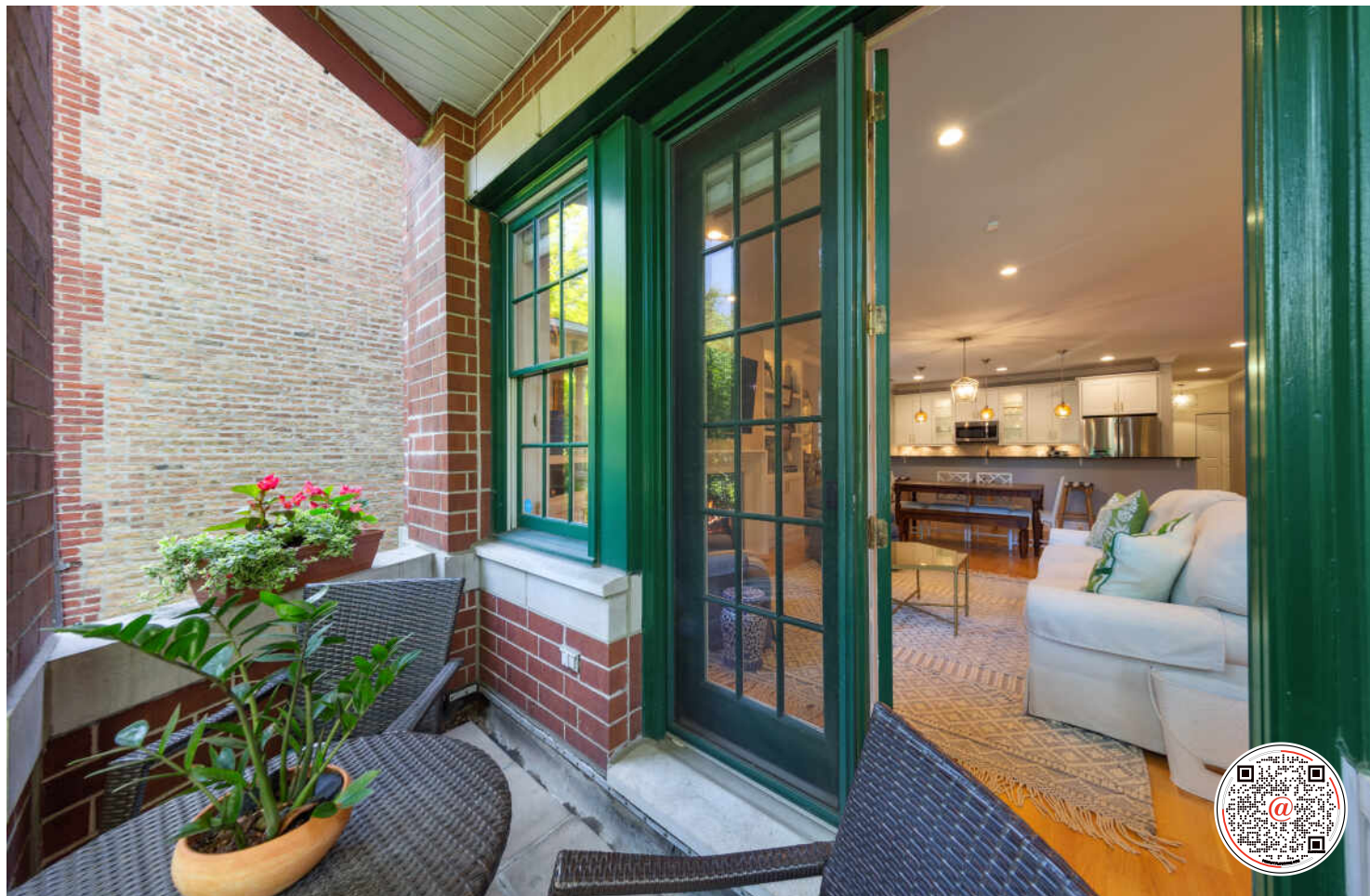


**615 W DEMING PLACE #203**  
EAST LINCOLN PARK





## STYLE AND COMFORT

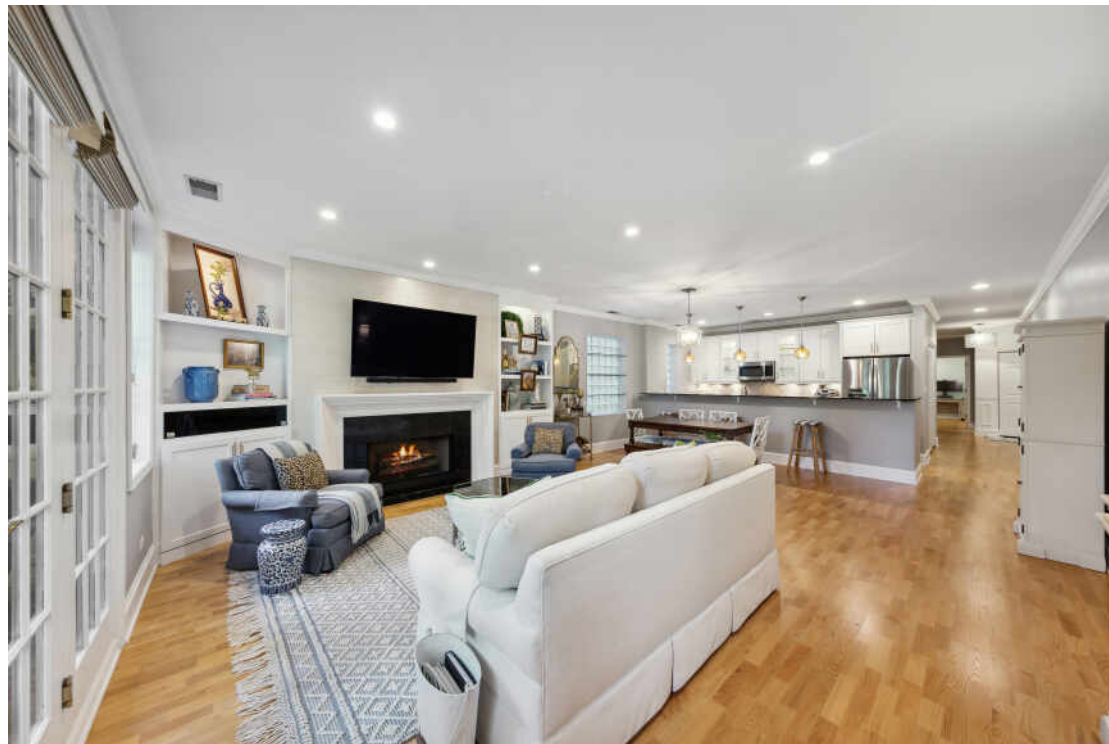
This impressive two-bedroom, two-bath Stonegate Terrace Condo offers the perfect blend of style and comfort on a beautiful one-way tree lined street in prime East Lincoln Park. Wide floor plan and open concept kitchen to dining and living enable flexibility and added entertainment or work-from-home options. Attached heated garage parking with space for bike storage and a rarely available second indoor parking spot lends itself to effortless living. Amenities in this boutique elevator building include side by side in-unit laundry, in-unit mechanical room providing extra storage, an additional storage unit, new water heater, new dishwasher and dapper, super functional renovated bathrooms. Custom millwork that includes built-in cabinetry around the fireplace, wainscoting in the entry way and second bedroom, and wide baseboards and crown molding add elegance and architectural impact. Enjoy the view of the building's expansive, gated front lawn and a meal on the grill from your enclosed brick balcony or take a short step outside to fantastic dining, transportation, shopping, the park, and Lake. This is a very special home in a coveted building, in a spectacular location - must-see!

2 BEDROOM  
2 BATH  
TAXES: \$7,272  
ASSESSMENTS: \$651 / MONTH



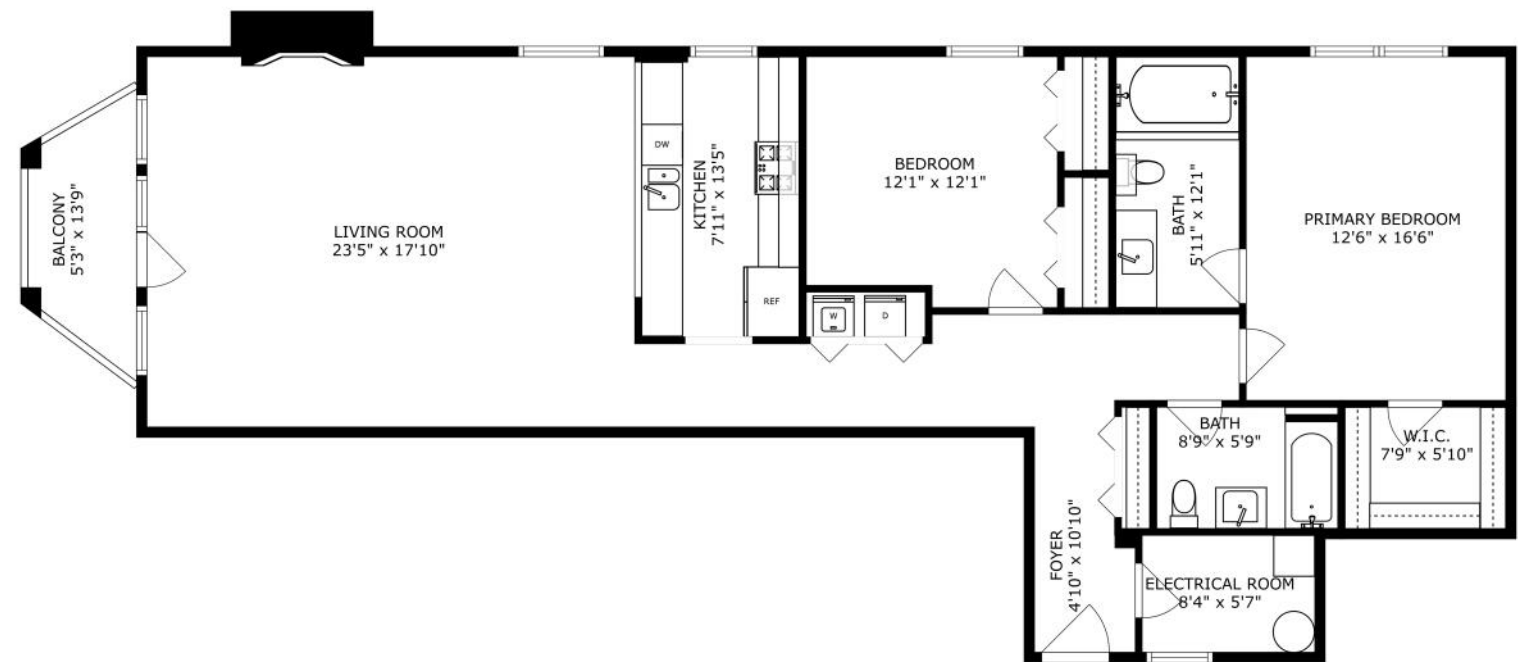












SIZES AND DIMENSIONS ARE APPROXIMATE, ACTUAL MAY VARY.





## LINCOLN PARK RESIDENTS HAVE IT ALL – FROM THE ARTS TO ITS FAMED ZOO – RIGHT IN THEIR BACKYARD.

The neighborhood includes quiet tree-lined residential blocks, DePaul University, and two major museums in addition to the Lincoln Park Zoo, one of the country's oldest zoos. There's also a wide array of entertainment, eateries, and hotspots.

An evening in Lincoln Park might include seeing a play at the acclaimed Steppenwolf Theatre and dining at a Michelin-rated restaurant or a quaint neighborhood café. Sports fans will find as many dive bars with the game on as foodies will find fine-dining restaurants with al-fresco seating.

Lincoln Park is just as delightful by day. Residents are close to the lakefront and North Avenue Beach, parks, farmers markets, festivals, and countless shops, ranging from upscale boutiques on Armitage to larger retailers at the Clybourn Corridor.

Housing stock ranges from smaller townhomes and vintage condominiums to rehabs and new construction. Buyers around DePaul University can find loft condominiums in converted factories and warehouses. On its eastern edge, Lincoln Park features beautiful vintage brownstones along with high-rises with breathtaking views of the lake, park, North Pond Nature Sanctuary, and city skyline.

Located just two miles from downtown, Lincoln Park offers residents a quick commute to work. Public transportation abounds, with the CTA's Brown and Red lines serving the neighborhood in addition to several bus routes and Lake Shore Drive.





## NOTES

[illegible]





## LAUREN SHELL

(312) 882-3535

LAURENSHELL@ATPROPERTIES.COM



CHRISTIE'S  
INTERNATIONAL REAL ESTATE

All specifications, features, designs, price, assessments, taxes and materials are subject to change without notice. Depicted floor plans and architectural renderings are only an artist's impression.

