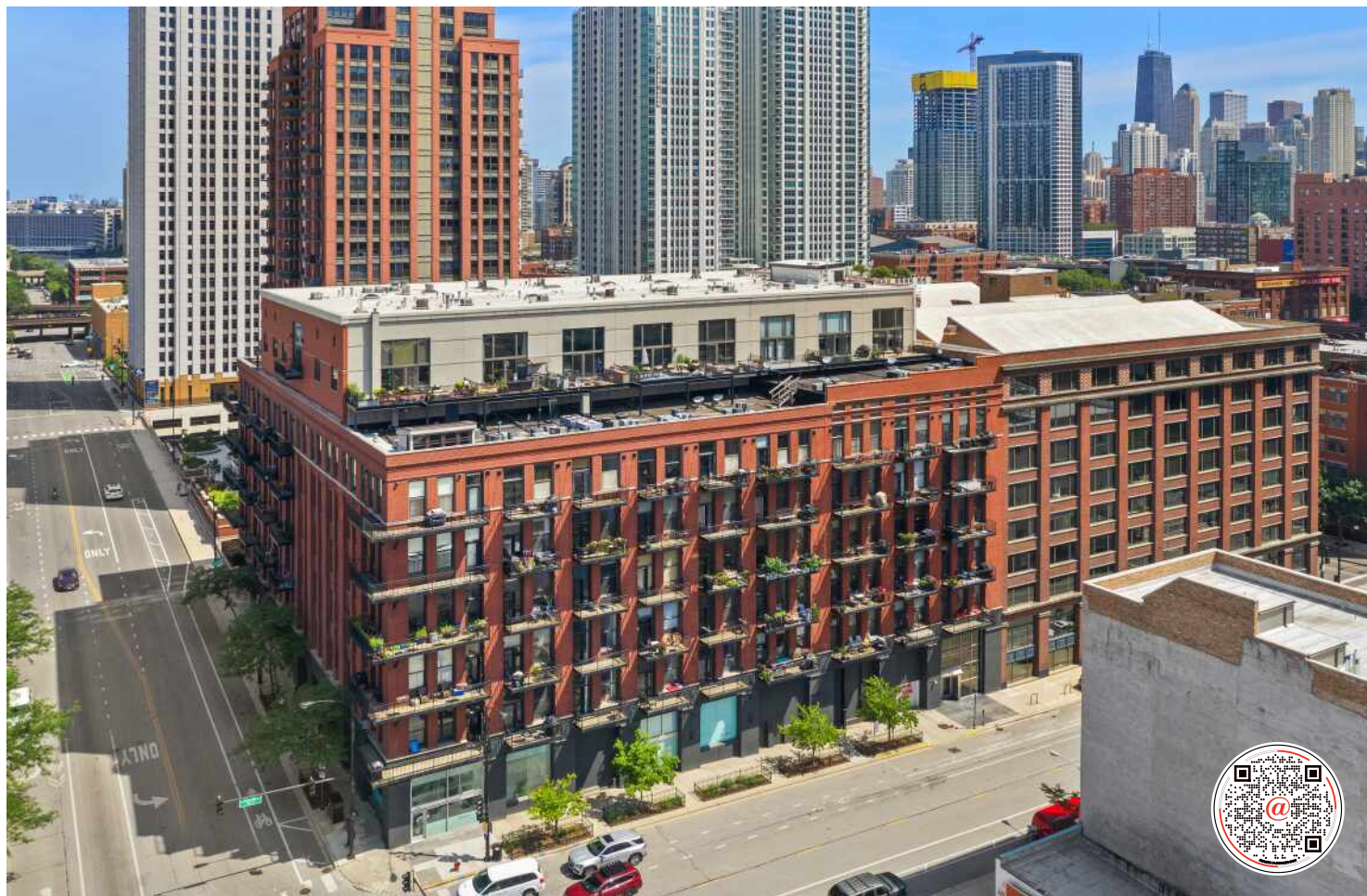
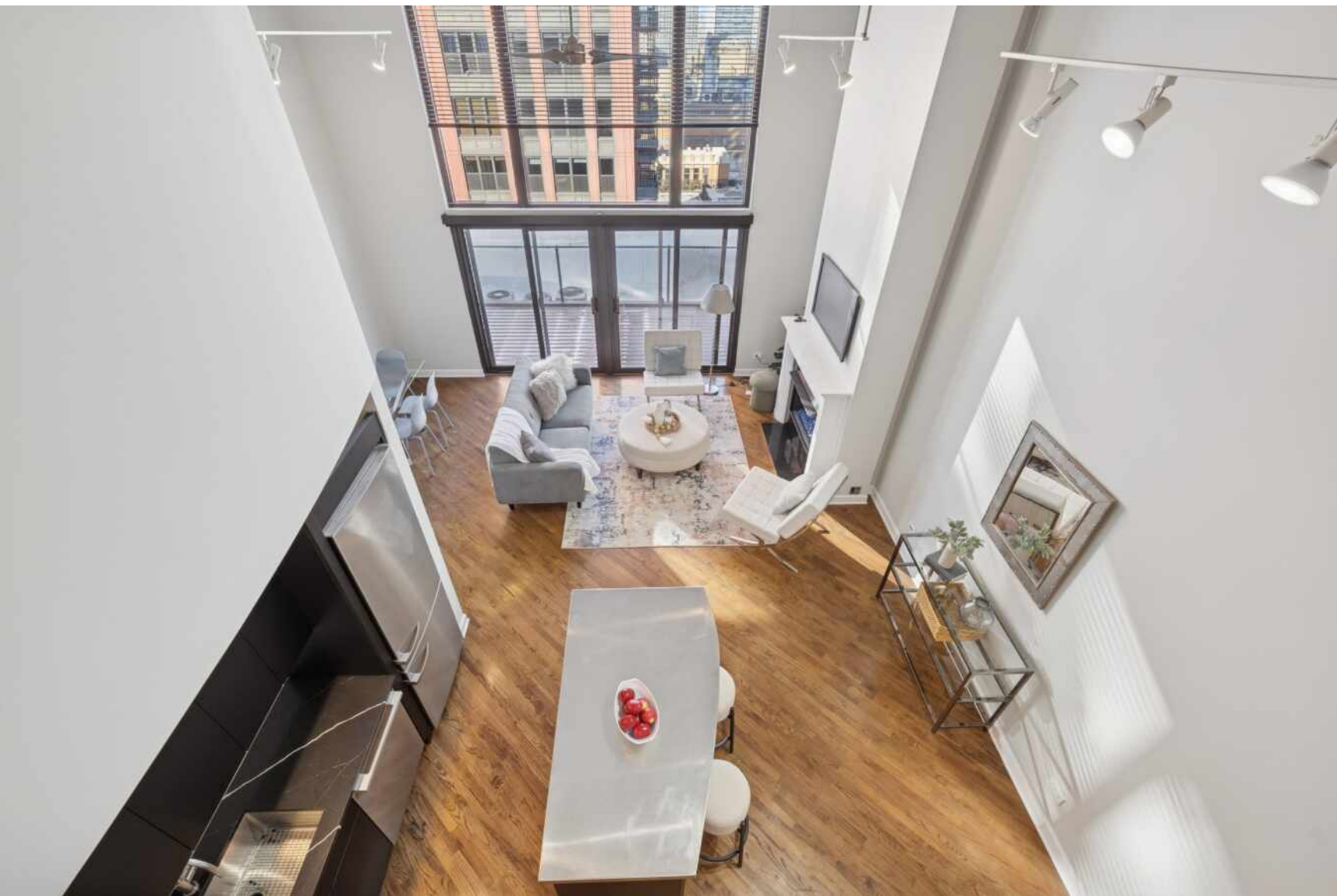


616 W FULTON STREET #703

FULTON RIVER DISTRICT





2 BEDROOM
2 BATH
TAXES: \$10,547
ASSESSMENTS: \$881 / MONTH

LOVE WHERE YOU LIVE

Penthouse-level duplex in the heart of Fulton Market with soaring ceilings, dramatic floor-to-ceiling windows, and skyline views from your expansive private terrace.

The modern, open-concept kitchen features matte black cabinetry, a stainless steel island, premium appliances, and sleek stone countertops-ideal for entertaining or everyday living.

The spacious living area includes hardwood flooring, a gas fireplace, and seamless access to the terrace for indoor-outdoor flow.

Upstairs, a versatile loft with plush carpeting, skylight, and ceiling fan overlooks the main living space-perfect as a guest suite, home office, or den. The home offers two full bathrooms, including a spa-inspired upper-level bath with marble tile, jetted tub, and dual vanities.

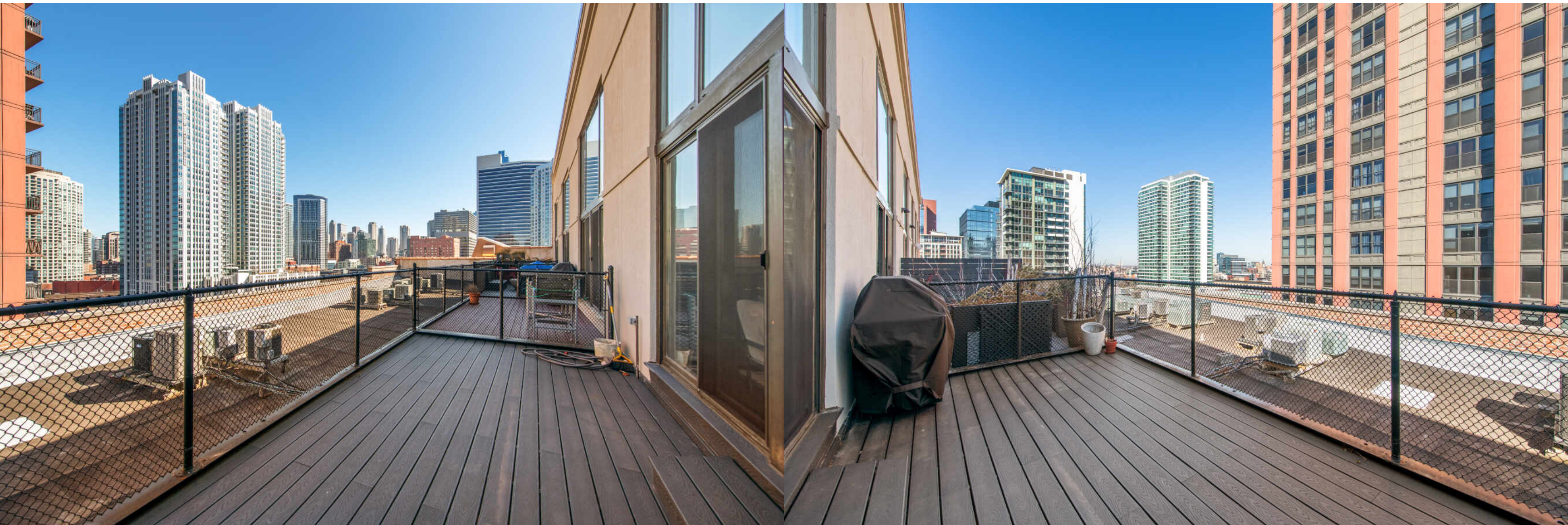
Additional highlights include a large custom walk-in closet, in-unit laundry, and excellent storage throughout. This property epitomizes a sophisticated urban lifestyle, steps away from the award-winning restaurant Row, the river walk, the Loop, and the renowned East Bank Club. Take advantage of this unparalleled opportunity to make your home in one of Chicago's most sought-after neighborhoods.

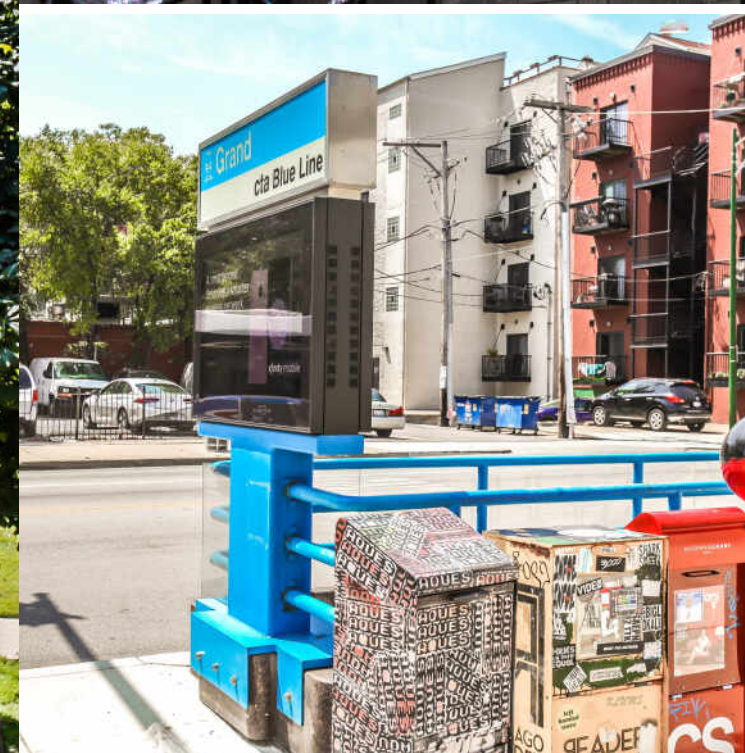
A deeded garage parking is available for an additional \$30K.









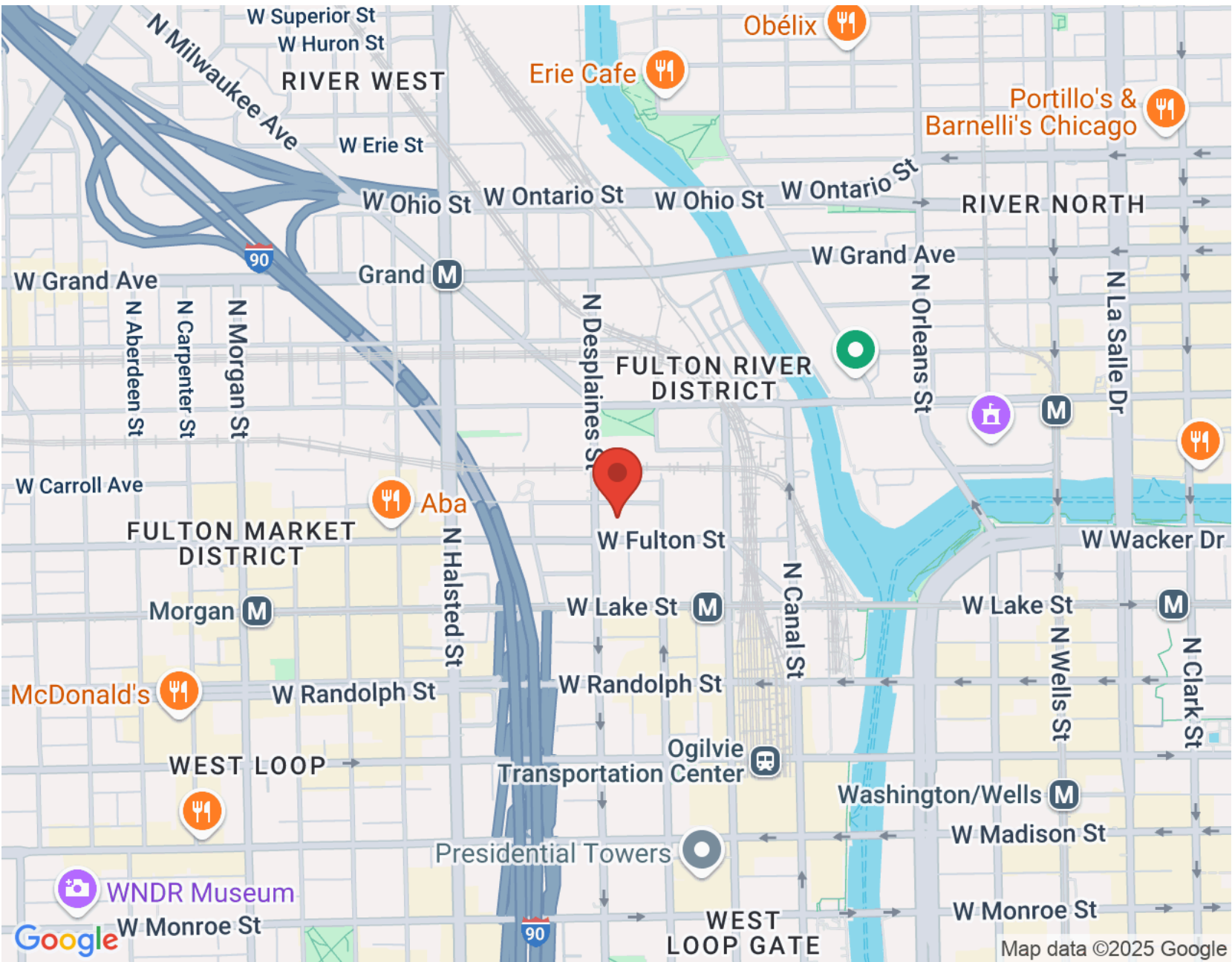


THIS DOWNTOWN POCKET SERVES AS THE LINK BETWEEN CHICAGO'S BUSTLING LOOP AND THE RAPIDLY DEVELOPING FULTON MARKET DISTRICT NEIGHBORHOOD IN THE WEST LOOP .

A sea of cyclists can be seen each morning riding down Milwaukee Avenue, sharing the road with commercial vehicles and cement trucks, illustrating this area's quickly evolving reputation from a 20th century industrial zone to one with glassy high-rises and posh restaurants and nightclubs.

Due to its industrial building stock, the Fulton River District is known for its swank loft condominiums and trendy open floor plan warehouse-to-office conversions. But there's been a flood of new construction in recent years, bringing hundreds of new upscale apartments and much needed retail to main corridors along Grand and Milwaukee avenues. One notable holdout throughout the years is the old Blommer Chocolate Factory, whose presence is evident by the thick smell of freshly processed cocoa beans.

Transit connectivity is bolstered by the Grand Blue Line station, bus routes along Milwaukee and Grand avenues, and quick access to commuter rail service at Ogilvie and Union stations. New sections of riverwalk are created in conjunction with continued development along the riverfront as per official Chicago River Corridor design guidelines and standards first adopted in 2005 and further revised in 2019.

[illegible]



CHRIS MCCOMAS

(773) 531-8048

CHRISMCCOMAS@ATPROPERTIES.COM

616WFULTON.COM



MCCOMAS RESIDENTIAL

BUY. SELL. RENT. INVEST. SINCE 2005.



CHRISTIE'S
INTERNATIONAL REAL ESTATE