

619 LEXINGTON SQUARE
PROVIDENCE VILLAGE | GURNEE





ROOM DIMENSIONS

LIVING ROOM : 16' x 14'

FAMILY ROOM : 16' x 15'

DINING ROOM : 14' x 14'

KITCHEN : 13' x 11'

PRIMARY BEDROOM : 21' x 14'

SECOND BEDROOM : 20' x 14'

THIRD BEDROOM : 12' x 11'

FOURTH BEDROOM : 24' x 23'



4 BEDROOM

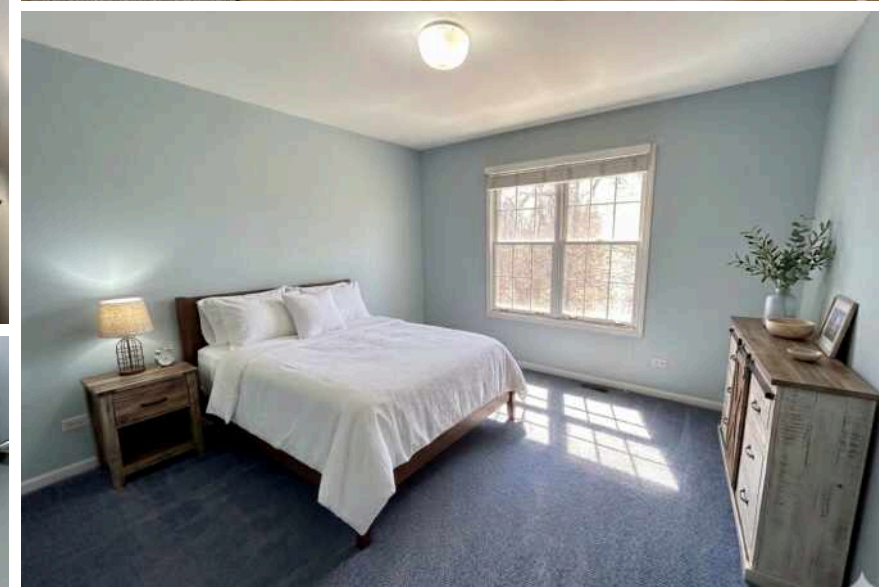
2.1 BATH

TAXES: \$12,023

ASSESSMENTS: \$150 / YEAR

- Nestled in the heart of Gurnee's highly sought-after Providence Village!
- Main level features gleaming hardwood floors, crisp white colonist trim, and classic six-panel doors.
- Center entry flanked by formal dining and living rooms. Shiplap accents update the Federal mantle surround of our masonry brick fireplace.
- Cozy family room features a wall of windows that floods the space with natural light and a sophisticated batten board accent wall.
- The efficiently designed kitchen boasts white cabinetry capped with newer quartz countertops and stainless steel appliances, including a French-door refrigerator, four-burner gas range with griddle, dishwasher and built-in microwave - all less than three years old. Expansive walk-in pantry hosts built-in shelving.
- An atrium door leads from the eating area to a private backyard oasis that backs to a serene wooded preserve, offering peaceful views with no rear neighbors.
- Primary ensuite comes complete with a walk-in closet and a spa-inspired bath featuring a dual-sink vanity, relaxing soaking tub and a double shower.
- Three additional generously sized secondary bedrooms are equipped with overhead lighting and blinds, including a unique fourth bedroom highlighted by maple flooring and classic dormered window.
- Downstairs is a full basement waiting for your finishing ideas, a laundry area where the washer and dryer remain, and an HVAC system that is less than two years old.
- Easy access to major commuter routes including I-94 and Routes 45 and 41, and are less than ten minutes from the premier shopping, dining, and entertainment at Gurnee Mills and the Grand-Hunt corridor.







MENTION **GURNEE** AND THE FIRST THINGS THAT COME TO MIND ARE SHOPPING AND ROLLERCOASTERS

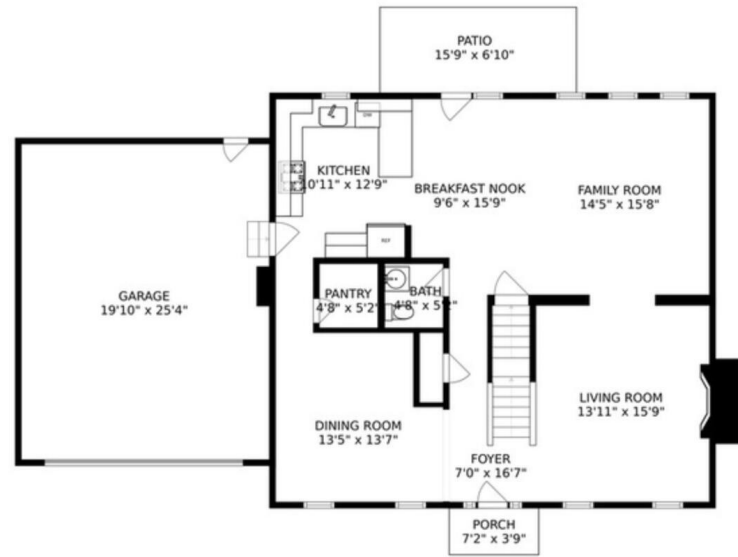
Six Flags Great America and Gurnee Mills, one of the largest shopping malls in the state, draw over 26 million visitors a year to the village located between Chicago and Milwaukee.

More than 1,000 businesses and corporations also make their home here from retail and recreation to hospitality companies and restaurants.

Named after Walter S. Gurnee, who served as Mayor of Chicago in the early 1850s, the village dates back to the 1830s when settlers from New York arrived.

Gurnee residents enjoy access to Chicago and a wealth of local attractions. Still, the community retains its small-town atmosphere. Gurnee Days is a popular annual event featuring a farmers market, golf tournament, fireworks, parade, and talent show.

The village is conveniently accessible via I-94.



SIZES AND DIMENSIONS ARE APPROXIMATE, ACTUAL MAY VARY



SIZES AND DIMENSIONS ARE APPROXIMATE, ACTUAL MAY VARY





KIERON QUANE

(224) 206-8813

KQUANE@ATPROPERTIES.COM

