

6214 N RIDGEWAY AVENUE
PETERSON PARK





ROOM DIMENSIONS

LIVING ROOM : 12' × 19'

DINING ROOM : 10' × 12'

KITCHEN : 10' × 14'

PRIMARY BEDROOM : 12' × 14'

SECOND BEDROOM : 12' × 14'

THIRD BEDROOM : 10' × 10'

3 BEDROOM

2.1 BATH

TAXES: \$5,650

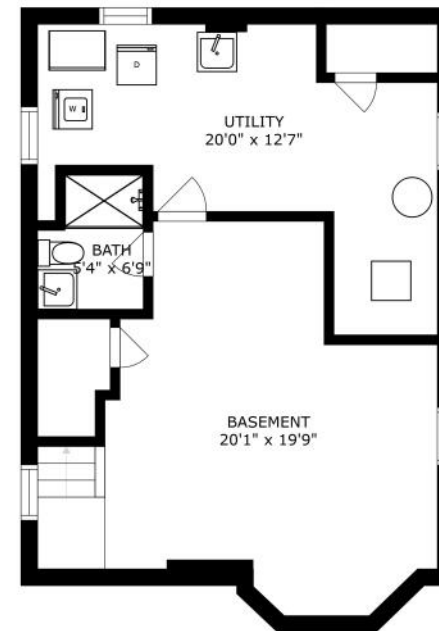
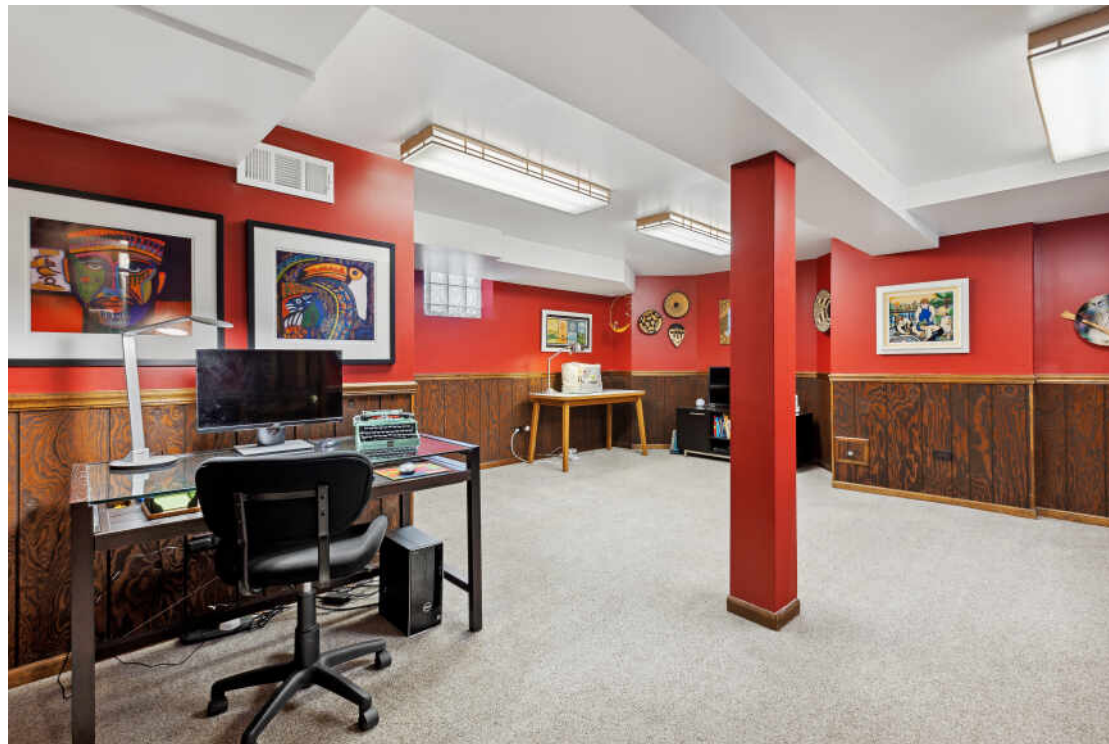
PROPERTY INFORMATION & DETAILS

Welcome to this beautifully updated, ready to move-in, 3 bedroom/2 1/2 bath brick Georgian home pristinely taken care of by the sellers for 30 plus years in quiet Peterson Park!

- Open floor plan with lots of light
- All three bedrooms plus a bath on the second level
- Newly redone kitchen with SS Appliances and eat-in breakfast bar
- Spacious primary bedroom with hardwood floors and two closets
- Second and third bedroom have hardwood floors under carpet
- Completely refinished basement with bathroom, side by side laundry, and lots of storage
- This home is perfect for entertaining with a second side entrance and large back yard with a new concrete patio
- Superb location-close to Peterson Park playground, restaurants, shopping, and easy access to expressway.



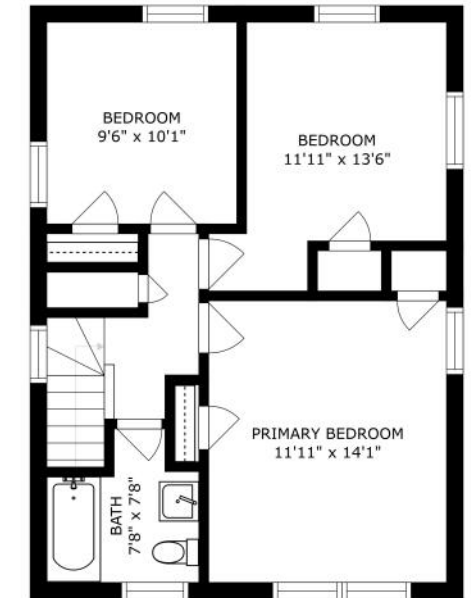




FLOOR 1



FLOOR 2



FLOOR 3

SIZES AND DIMENSIONS ARE APPROXIMATE, ACTUAL MAY VARY.



NOTES

[illegible]



RITA KERINS

(773) 807-2387

RITA@RITAESTATE.COM

WWW.RITAESTATE.COM



CHRISTIE'S
INTERNATIONAL REAL ESTATE

6214NRIDGEWAY.INFO