

6257 EAGLE RIDGE DRIVE
GURNEE





ROOM DIMENSIONS

LIVING ROOM : 16' × 16'

KITCHEN : 12' × 11'

DINING ROOM : 14' × 9'

GREAT ROOM : 14' × 13'

PRIMARY BEDROOM : 23' × 12'

BEDROOM : 12' × 10'

BEDROOM : 12' × 10'

3 BEDROOM

1.1 BATH

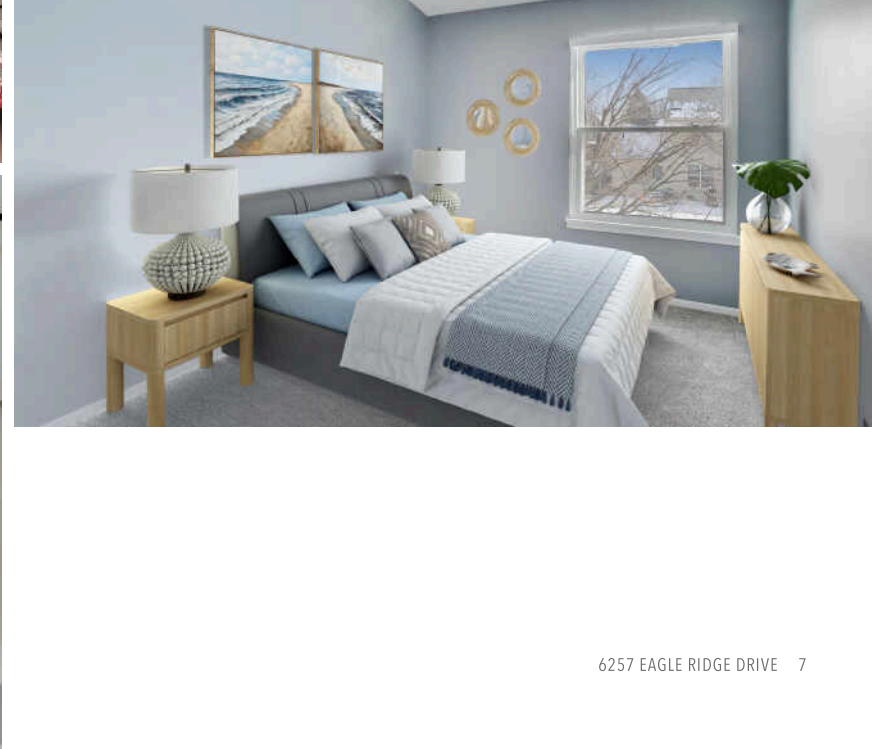
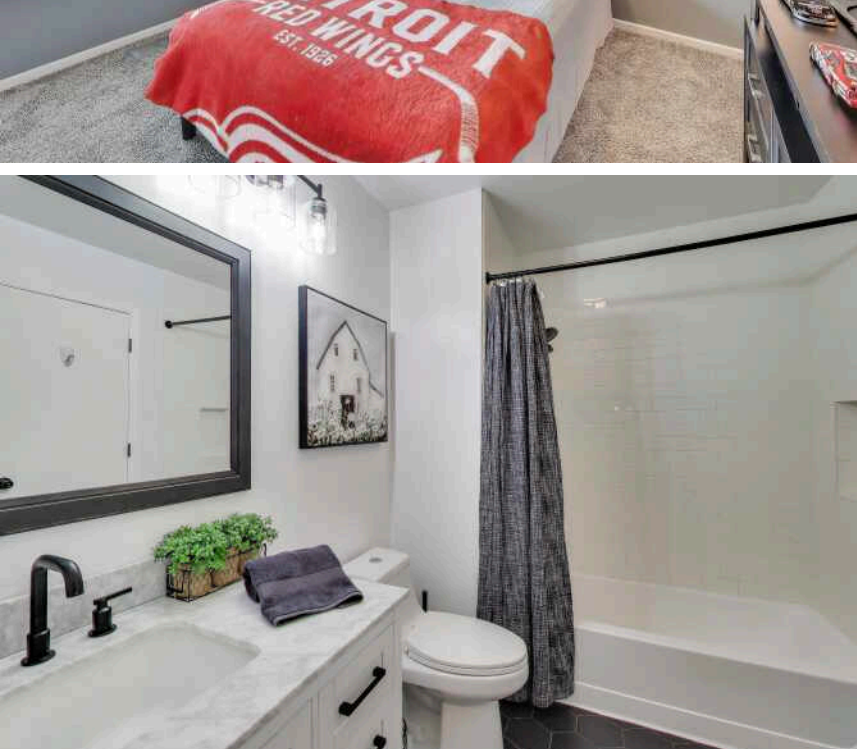
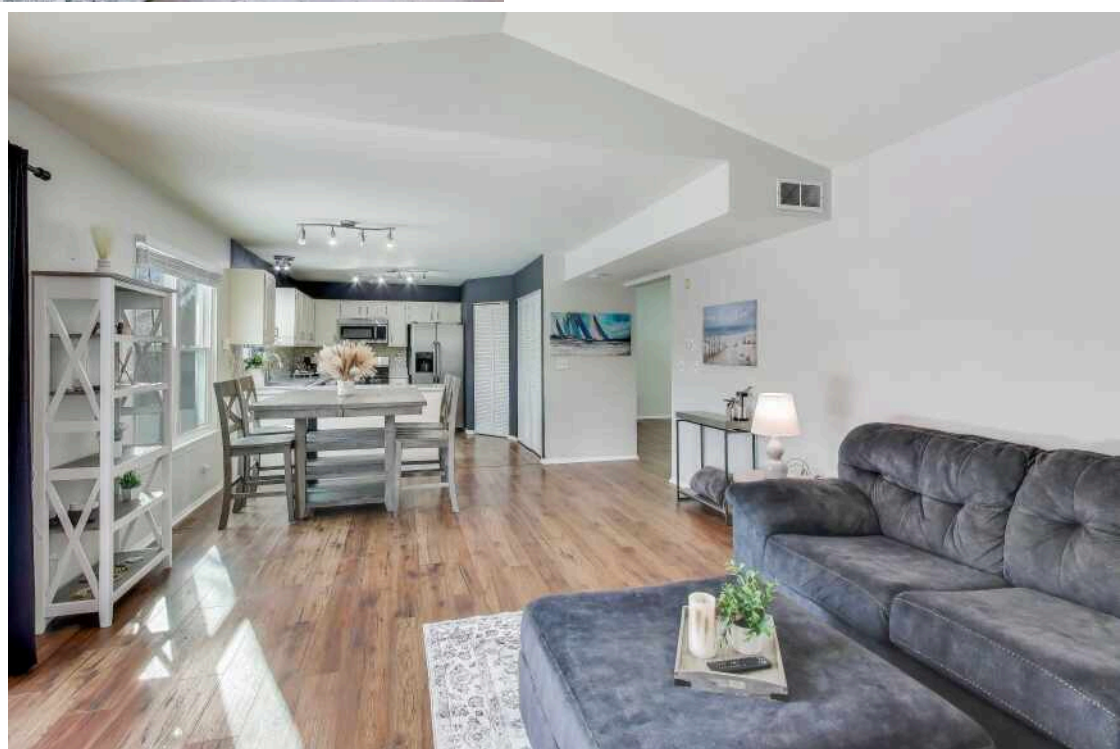
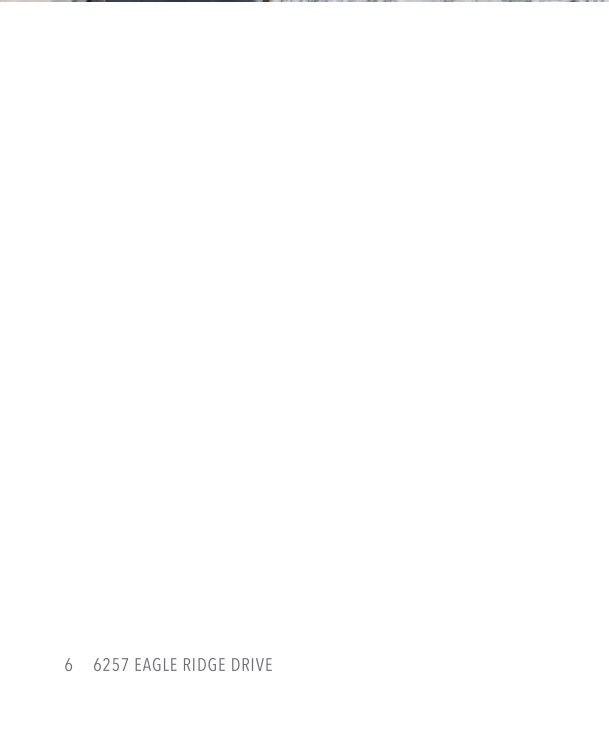
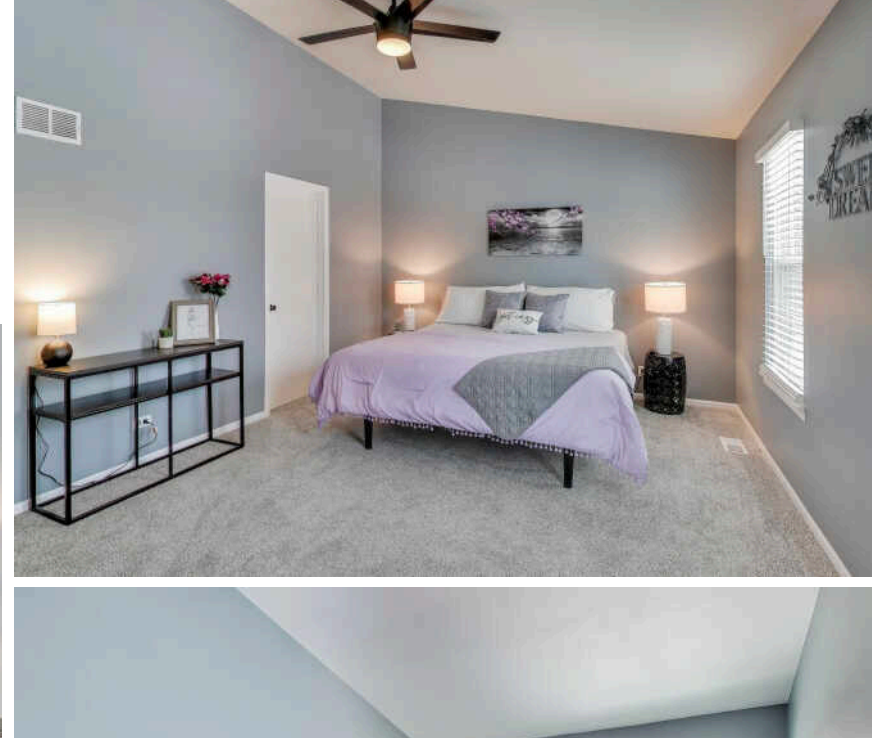
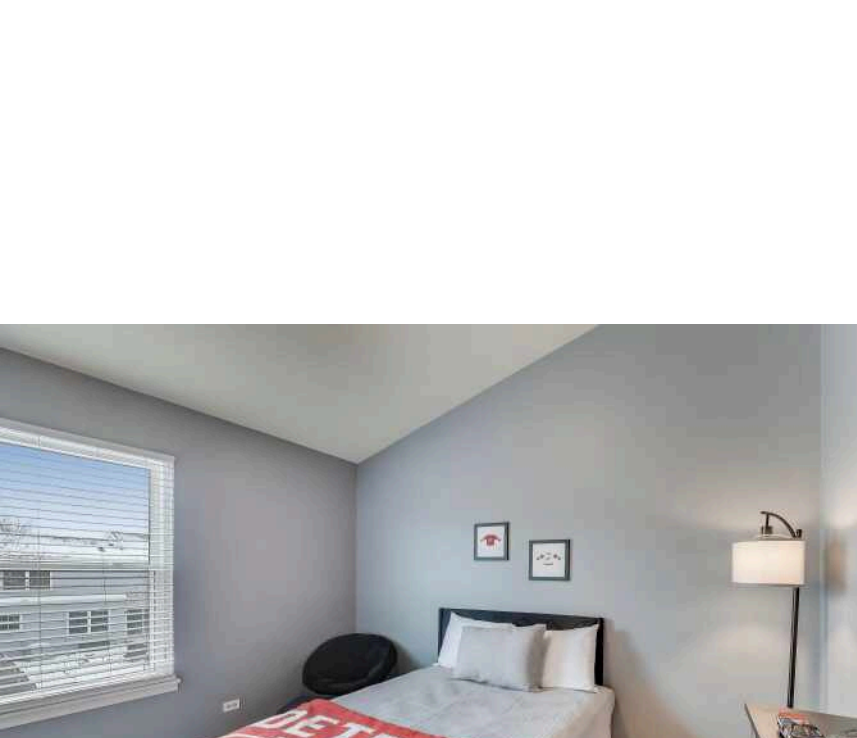
ASSESSMENTS: \$45/MONTH

SPACIOUS, UPDATED 3 BEDROOM DUPLEX

Enjoy PEACE OF MIND with this MOVE-IN READY Fairway Ridge home featuring a private FENCED YARD plus desirable community amenities including a pool, clubhouse, and exercise room for only \$45/month! A RARE OPPORTUNITY conveniently located near Gurnee schools, shopping, dining, and entertainment.

- Seamless Open-Concept Layout
- Modern Kitchen with Sleek Stainless Steel Appliances
- Large Private Fenced Yard - Ideal for entertaining, pets, or play
- Concrete Patio plus Extended Stone-lined Firepit Area
- 3 Spacious Bedrooms with Vaulted Ceilings
- Large Primary Suite with Walk-in Closet, Dressing Area & Semi-Ensuite
- Updated Bathroom
- Newer Triple-Pane Windos
- New Carpet
- New Dishwasher
- New Dryer
- Full 4' Deep CONCRETE Crawl - great added storage







MENTION **GURNEE** AND THE FIRST THINGS THAT COME TO MIND ARE SHOPPING AND ROLLERCOASTERS

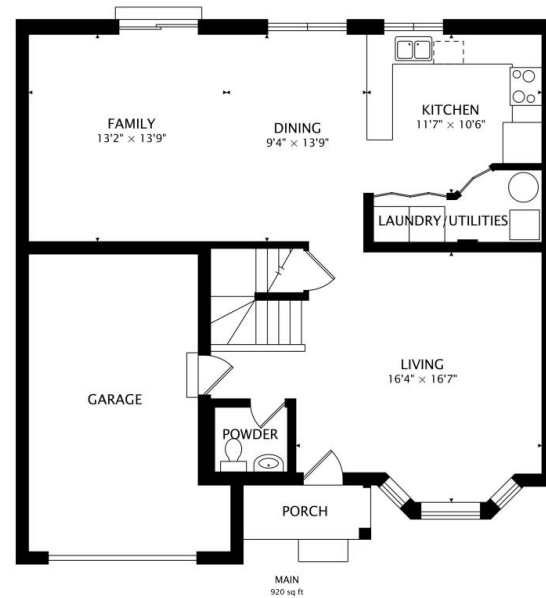
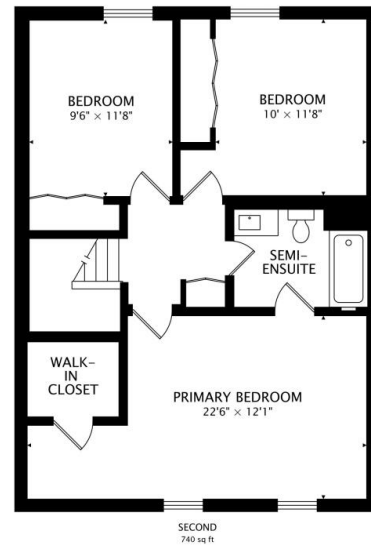
Six Flags Great America and Gurnee Mills, one of the largest shopping malls in the state, draw over 26 million visitors a year to the village located between Chicago and Milwaukee.

More than 1,000 businesses and corporations also make their home here from retail and recreation to hospitality companies and restaurants.

Named after Walter S. Gurnee, who served as Mayor of Chicago in the early 1850s, the village dates back to the 1830s when settlers from New York arrived.

Gurnee residents enjoy access to Chicago and a wealth of local attractions. Still, the community retains its small-town atmosphere. Gurnee Days is a popular annual event featuring a farmers market, golf tournament, fireworks, parade, and talent show.

The village is conveniently accessible via I-94.

[illegible]



SONIA CISTERNINO

REAL ESTATE BROKER, APPRAISER & ADVISOR

847.445.7477

SONIA@ATPROPERTIES.COM

SONIA \$ELL\$



All specifications, features, designs, price, assessments, taxes and materials are subject to change without notice. Depicted floor plans and architectural renderings are only an artist's impression.

