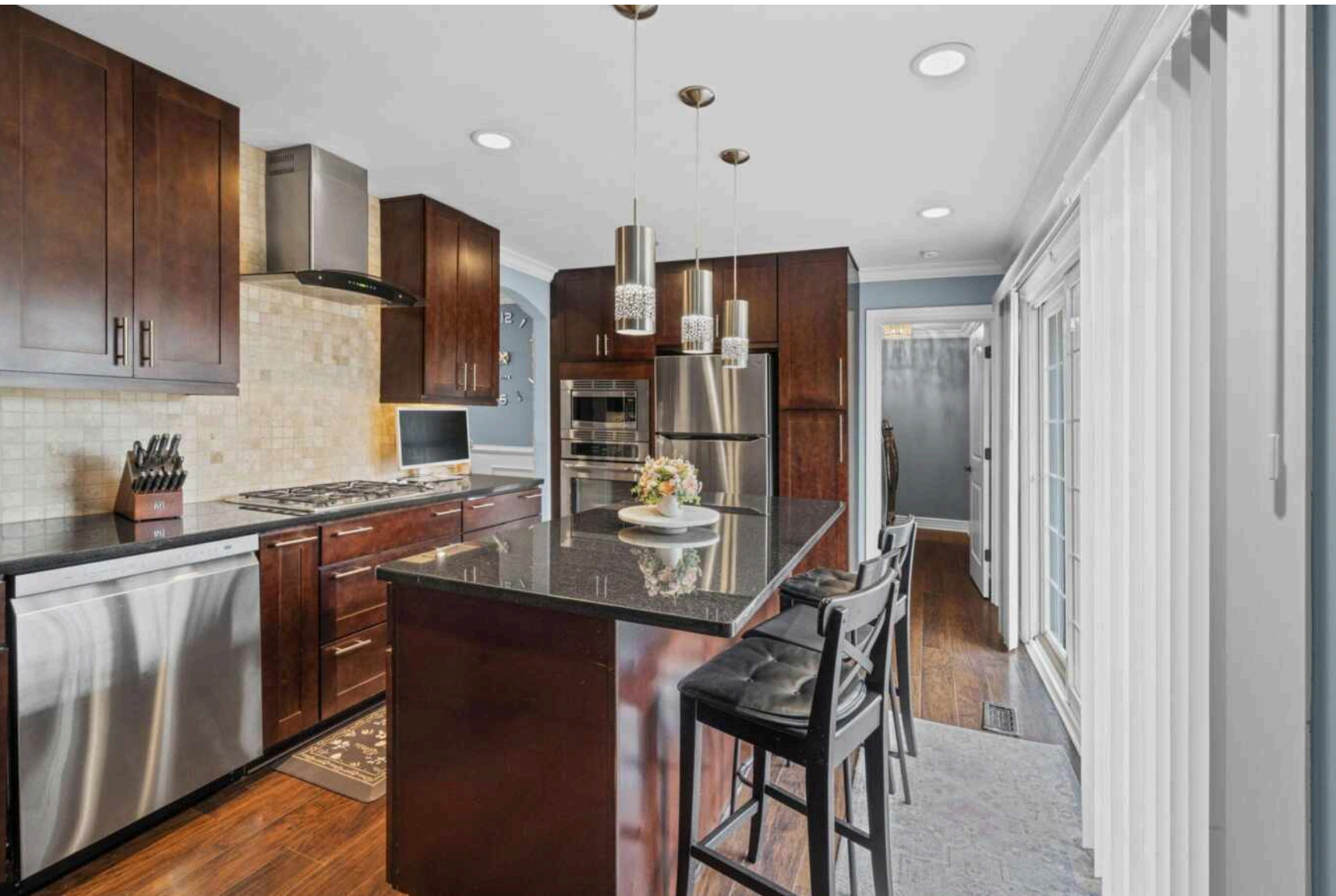


625 MORTON STREET
HOFFMAN ESTATES

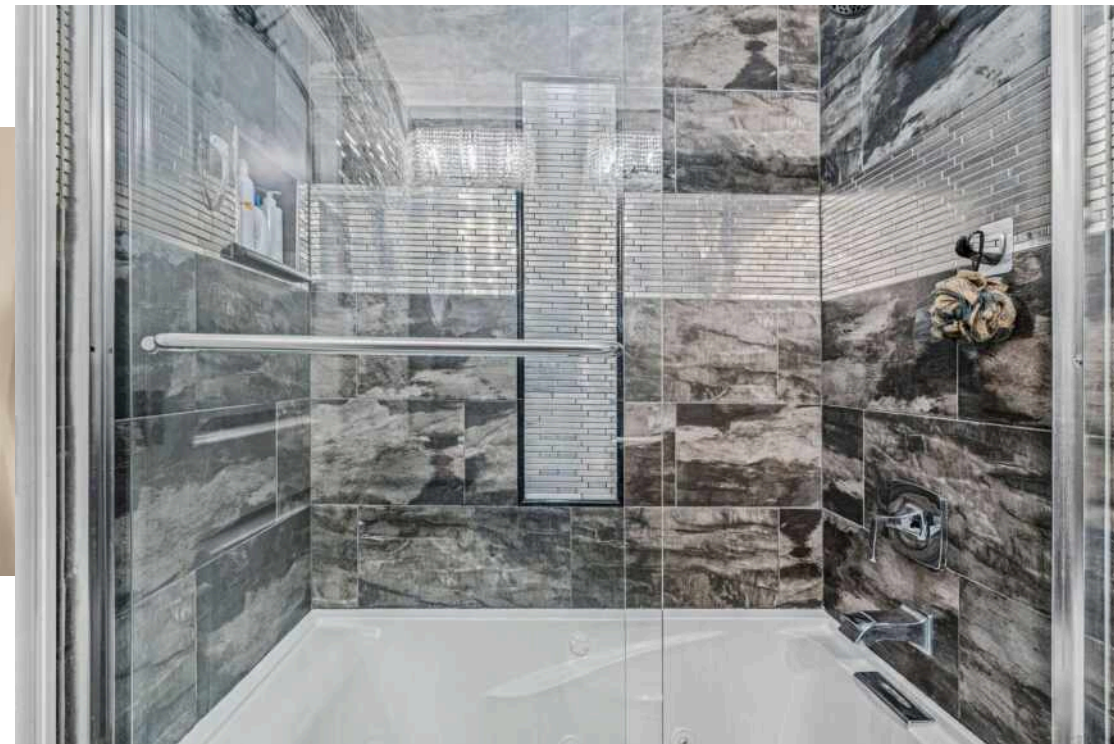
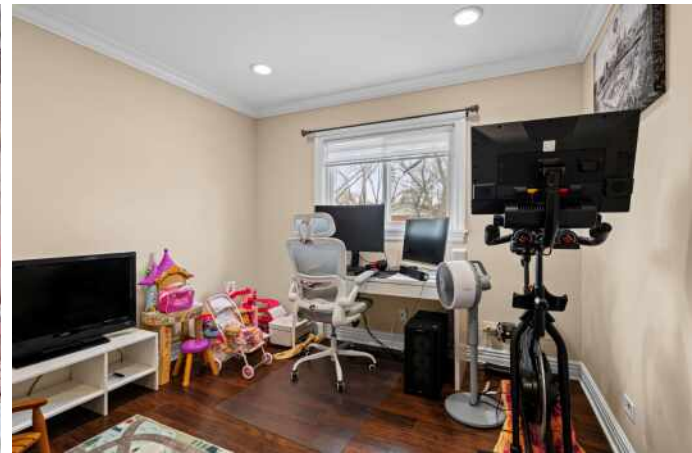




3 BEDROOM
1.1 BATH
TAXES: \$7,974

Welcome to 625 Morton St, a stunning ranch-style home nestled in the heart of Hoffman Estates. This charming residence offers three spacious bedrooms, one full bathroom, and an additional half bathroom, making it perfect for families or those who love to entertain. The large kitchen is a chef's dream, featuring a generous island, ample cabinetry, and striking granite countertops complemented by a stylish stone backsplash. Sunlight pours through large windows showcasing the beautiful hardwood floors throughout. The living room is a cozy retreat, centered around a beautiful fireplace, creating a warm and inviting atmosphere. Step outside to enjoy a large, well-maintained yard, ideal for outdoor gatherings or simply relaxing in your private oasis. Completing this home is a one-car garage with extra space on the driveway, providing plenty of parking for guests. This home truly looks like it belongs in a designer magazine, offering both style and functionality in a sought-after location. Don't miss the opportunity to make this exquisite property your own!







TREE-LINED STREETS, ABUNDANT GREEN SPACE, AND AMPLE RECREATIONAL ACTIVITIES CHARACTERIZE THE VILLAGE OF **HOFFMAN ESTATES.**

The community offers easy access to nearby nature attractions such as the Spring Valley Nature Center & Heritage Farm in Schaumburg and the Deer Grove Forest Preserve in Palatine. Meanwhile, Bridges of Poplar Creek Country Club features an 18-hole golf course with over 6,000 yards of fairways and greens. Golf aficionados also take to the Hilldale Golf Club and Highland Woods Golf Course.

The village is most notably home to the Now Arena, providing sports, musical, and theatrical entertainment throughout the year. Residents also enjoy trying different cuisines at Hoffman Estates' many restaurants.

In the summertime, locals and visitors gather at the Seascapes Family Aquatic Center, where they can swim, dig in the sand, and go down any of the four water slides. Other recreational facilities include the Triphahn Community Center & Ice Arena, Willow Recreation Center, and the Club at Prairie Stone.

Hoffman Estates is located along I-90 and has access to major regional roadways such as Illinois Routes 58, 59, 62, and 72. Commuters are also served by two Metra rail lines, the Union Pacific Northwest Line and the Milwaukee District West Line.



IVETTE BOBKA

(847) 962-8063

630-530-0900

IVETTE@ATPROPERTIES.COM