



629 GEORGE COHAN COURT CROWN POINT



629 GEORGE COHAN COURT • CROWN POINT

@properties | CHRISTIE'S
INTERNATIONAL REAL ESTATE

LP LUXURY
PORTFOLIO
INTERNATIONAL



BONNIE HAWKSWORTH BROKER

1 2193097638 mobile
219.243.2120 office
bonniehawksworth@atproperties.com

629 GEORGE COHAN COURT • CROWN POINT





629 GEORGE COHAN COURT

FEATURES

Winding through the sunny, tree-lined streets of Ellendale Farm, you reach George Cohan Court in the desirable Estates section. At the end of the cul-de-sac, your oasis awaits. The beautifully landscaped lot offers a magical wooded garden escape, complete with sandbox, playhouse, jungle gym, and seating area. Inside, the gorgeous wide-plank white oak floors lead you through the airy first floor, featuring oversized windows that invite the outdoors into every room. Ideal for entertaining yet cozy and inviting, the open floor plan features a central kitchen and keeping room with a fireplace and French doors that open to the back patio. Dining options abound: gather around the quartz-topped island; enjoy breakfast in the morning room; or host guests in the formal dining room. Just off the kitchen, a screened-in porch lets you enjoy nature in comfort. The main living room is a showstopper, with elegant 11-foot ceilings and a second fireplace. Down the hall, the grand primary suite offers a spacious walk-in closet and a serene ensuite bath. An additional first-floor bedroom (or office) includes its own private bath and closet. A laundry room and mudroom complete the main level. Upstairs, a central landing creates a charming library nook, leading to three more bedrooms. One features a private ensuite bath, while the other two share a Jack and Jill bath with dual vanities. The large unfinished basement is full of potential, with roughed-in plumbing ready for your vision.



BONNIE HAWKSWORTH BROKER

1 2193097638 mobile
219.243.2120 office

bonniehawksworth@atproperties.com

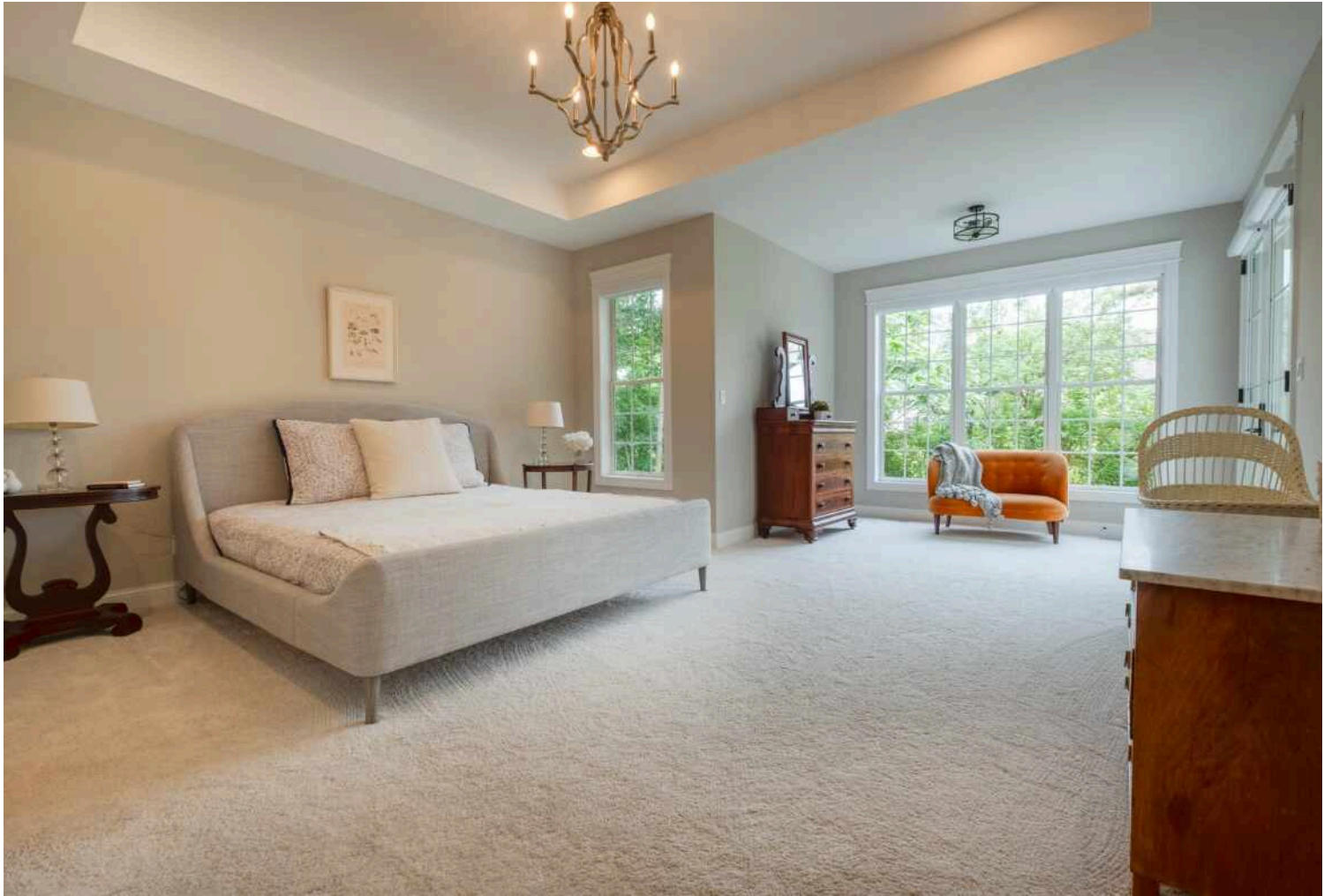




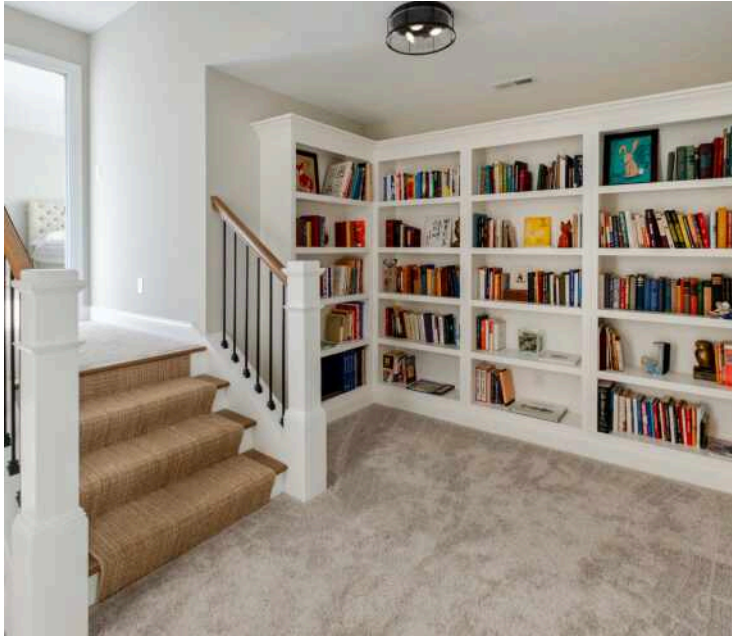










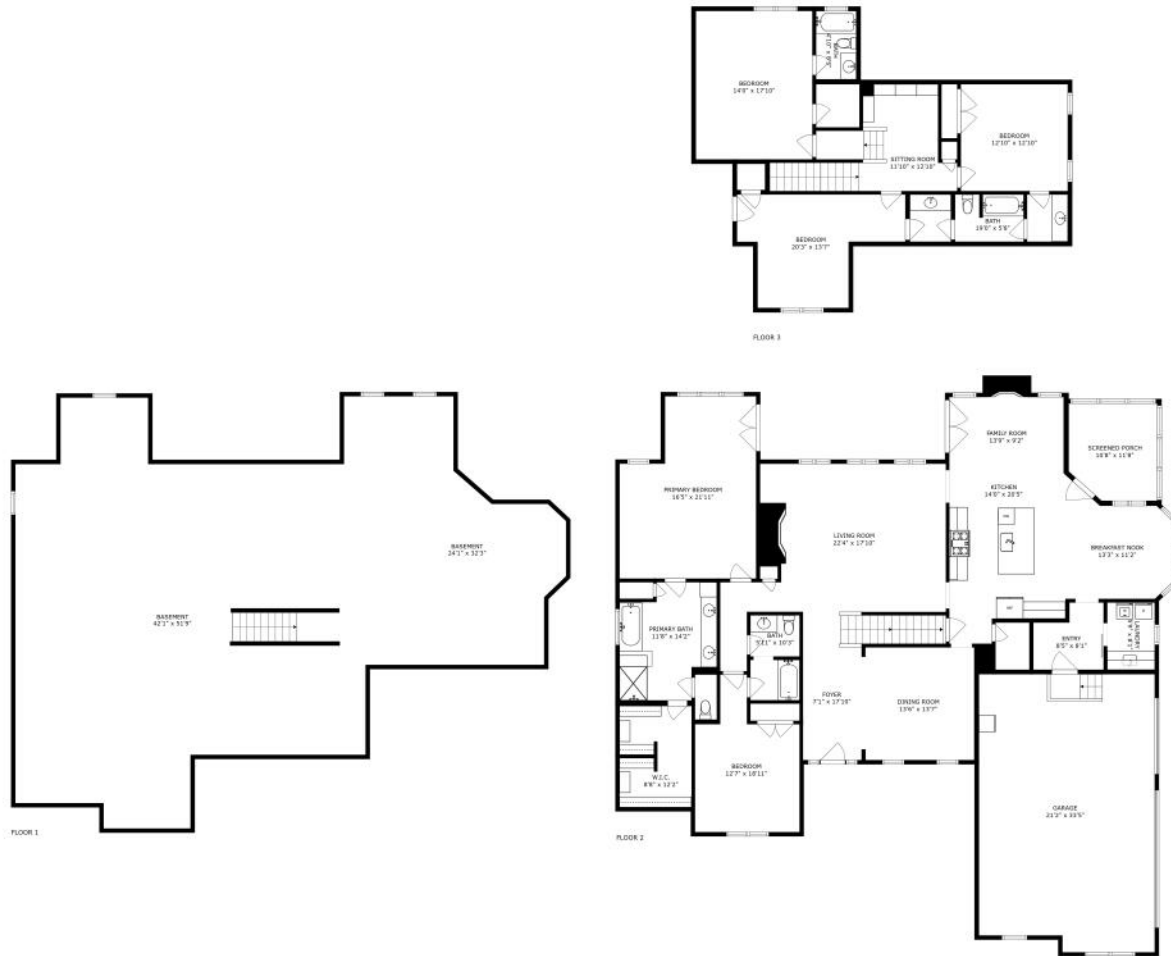




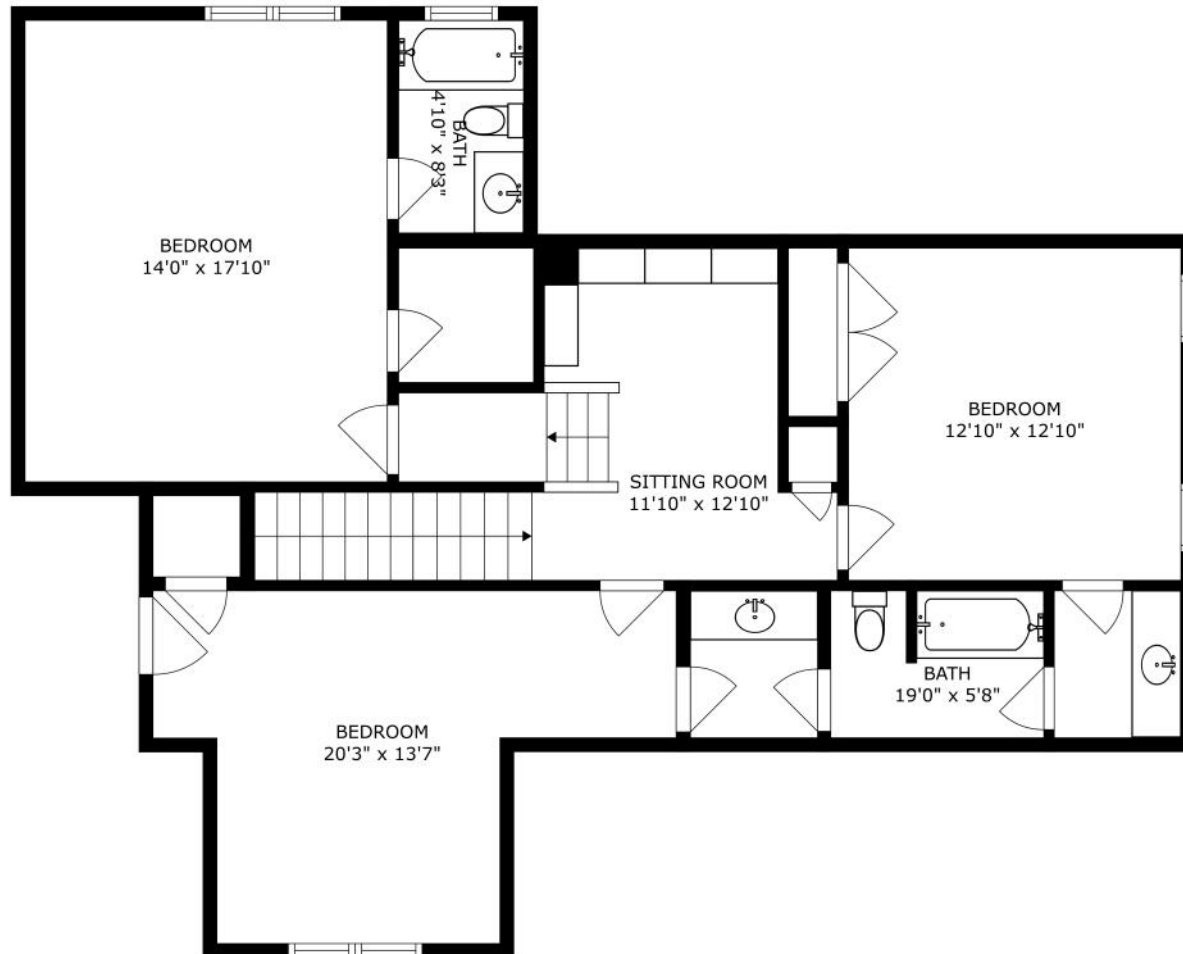








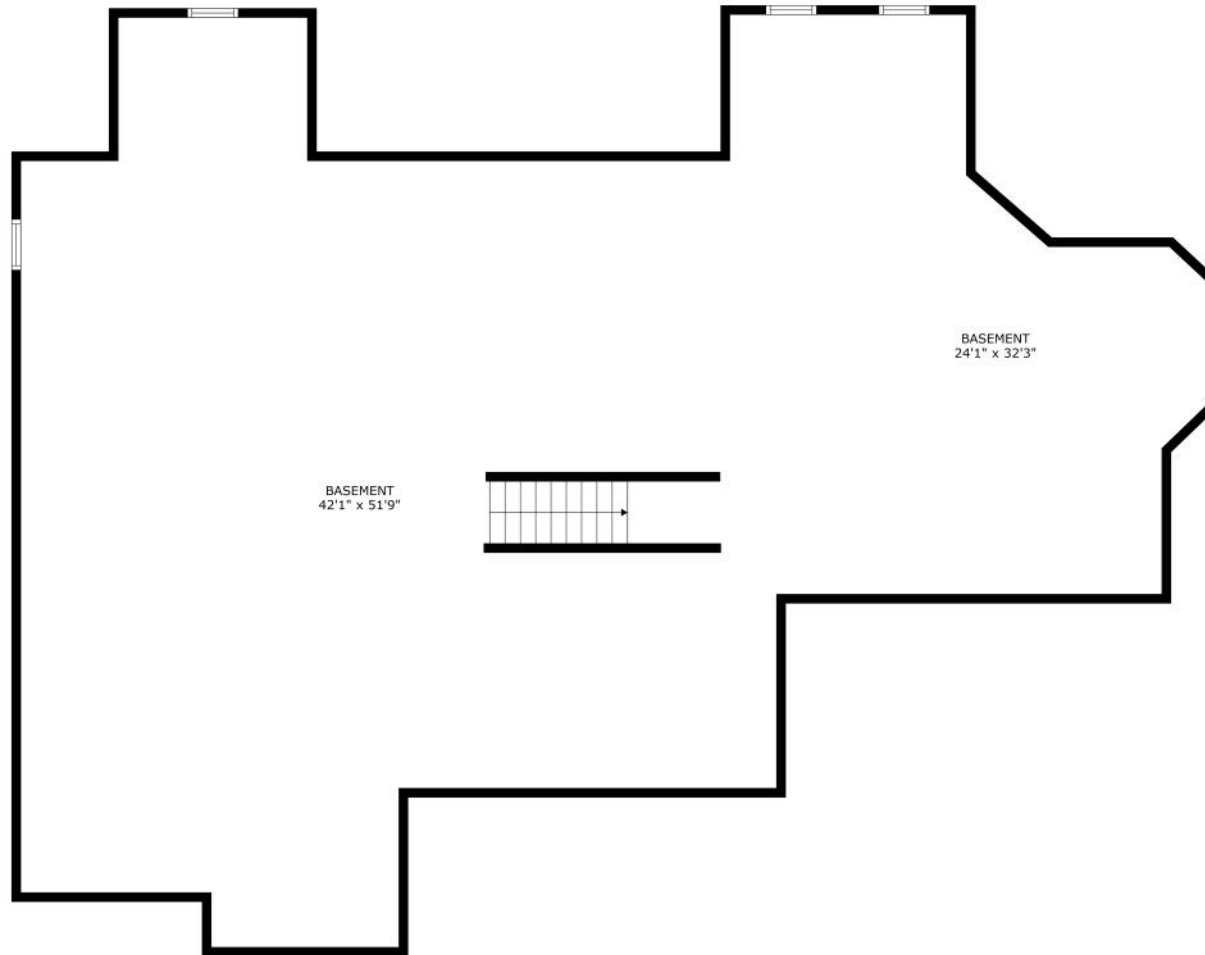
SIZES AND DIMENSIONS ARE APPROXIMATE, ACTUAL MAY VARY.



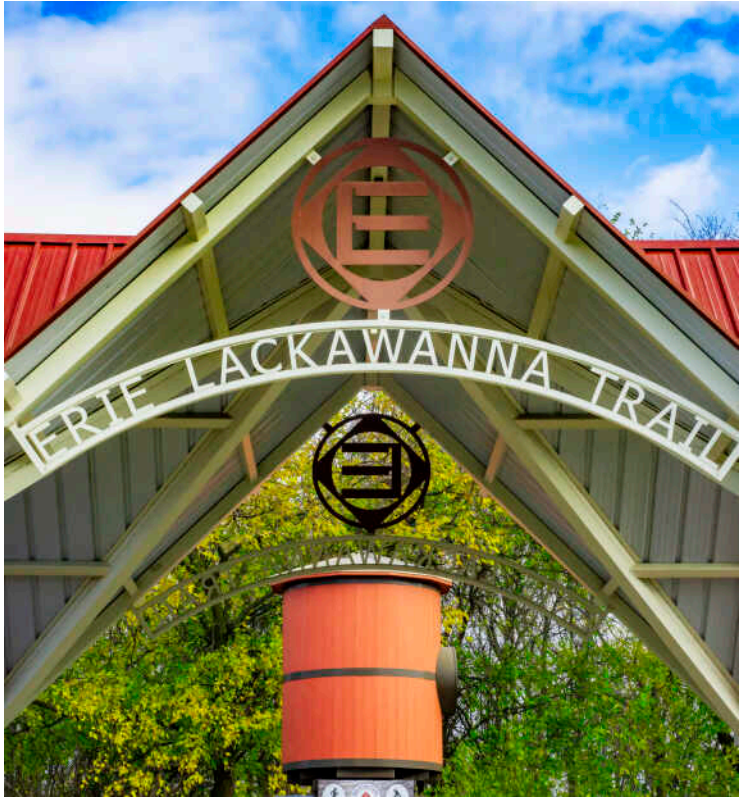
SIZES AND DIMENSIONS ARE APPROXIMATE, ACTUAL MAY VARY.



SIZES AND DIMENSIONS ARE APPROXIMATE, ACTUAL MAY VARY.



SIZES AND DIMENSIONS ARE APPROXIMATE, ACTUAL MAY VARY.



CROWN POINT IS A LIVELY COMMUNITY WITH UNIQUE SHOPS AND RESTAURANTS AND SEEMINGLY ENDLESS LOCAL HAPPENINGS.

Locals love Crown Point's recreational offerings. Residents look forward to annual community events like the Lake County Fair and the Taste of Crown Point.

Recreation abounds in this beautiful city, where residents have access to 19 area parks, a skate park, and the 95-acre Crown Point Sportsplex, which features synthetic turf fields, illuminated natural grass fields, and a champion field with stadium seats. The fields accommodate numerous sports including football, lacrosse, soccer, softball, and baseball.

Bulldog Park is another center of recreational opportunities featuring community events, concerts, and a splash pad. The two-acre park is just a couple blocks from downtown shops and restaurants and has fire pits, concession stands, and an NHL-sized ice rink.

Come summertime, Crown Point is the site of the Lake County Fair – the second largest county fair in Indiana. The 10-day event showcases monster trucks, a demolition derby, and an arena for horse shows. Other popular events include the annual Corn Roast and the Taste of Crown Point, which are both hosted downtown near the historic courthouse.

Summer is also the peak season to visit Deep River Waterpark, where visitors can experience a wave pool, lazy river rides, speed slides, a water-play structure, and more. But the fun doesn't stop there. In the winter, the plaza at the waterpark turns into an ice-skating rink.





@properties® | CHRISTIE'S
INTERNATIONAL REAL ESTATE

Leading REAL ESTATE
COMPANIES
OF THE WORLD®

LP
LUXURY
PORTFOLIO
INTERNATIONAL®

