

**629 LINCOLN STATION DRIVE**  
OSWEGO, IL 60543



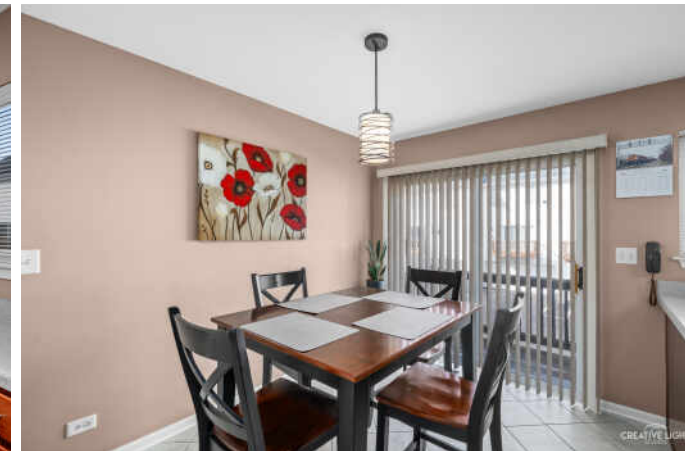
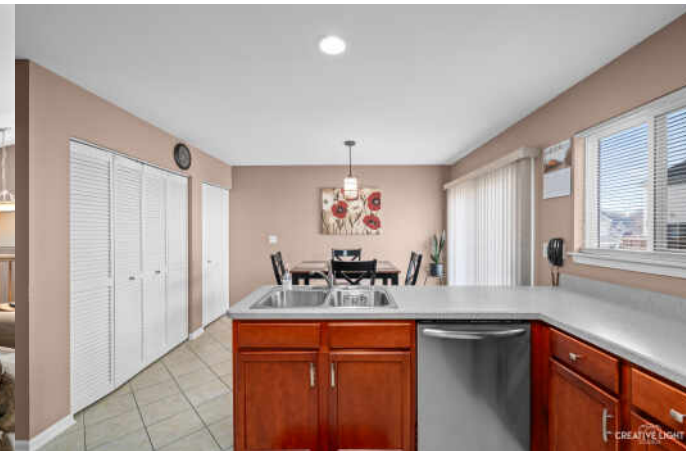




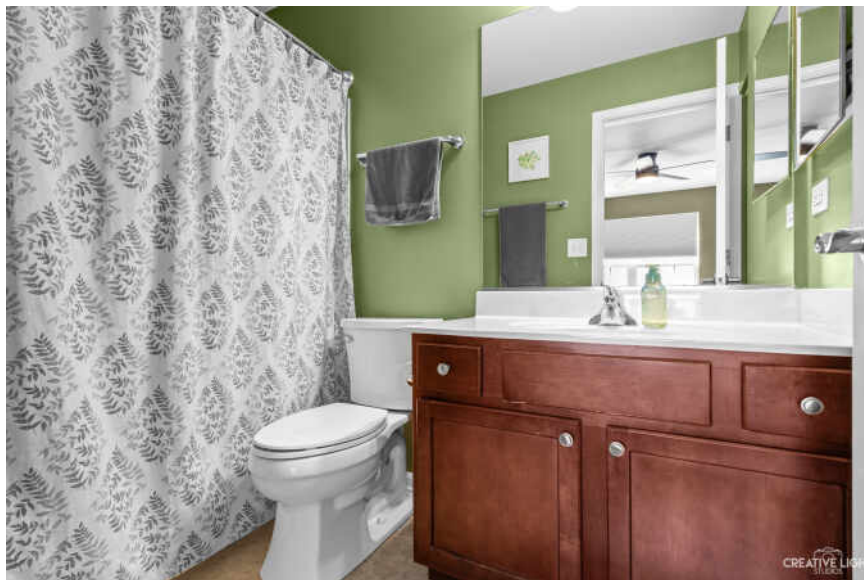
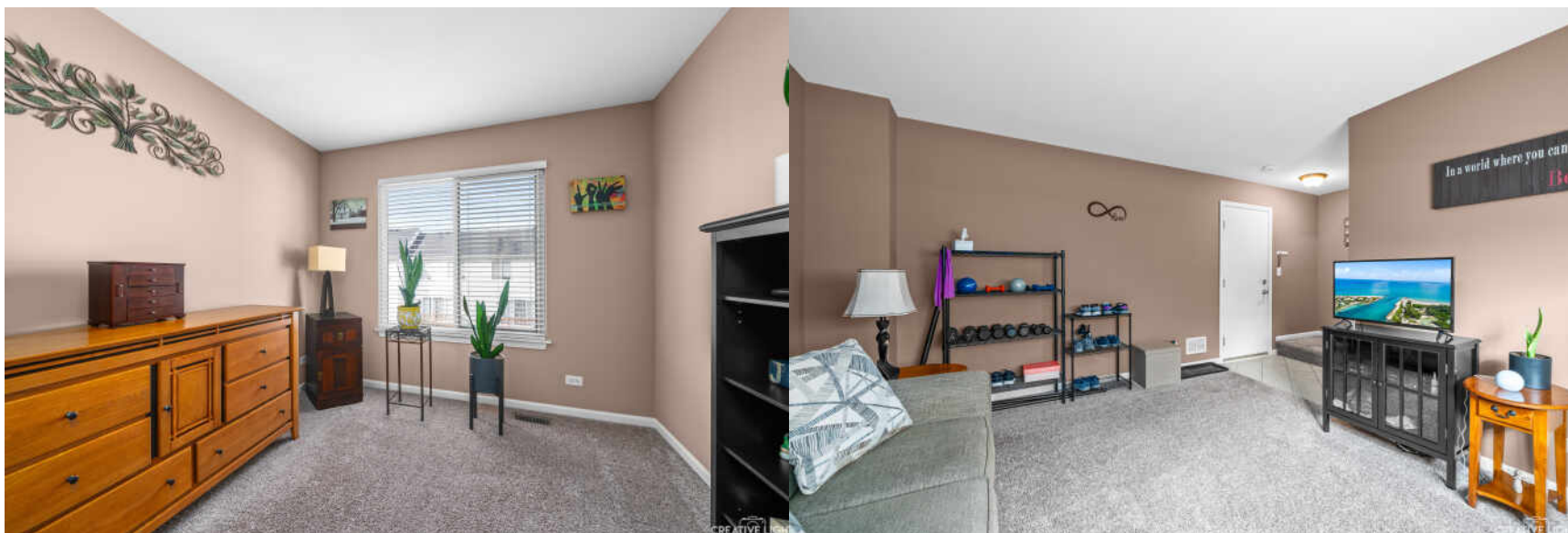
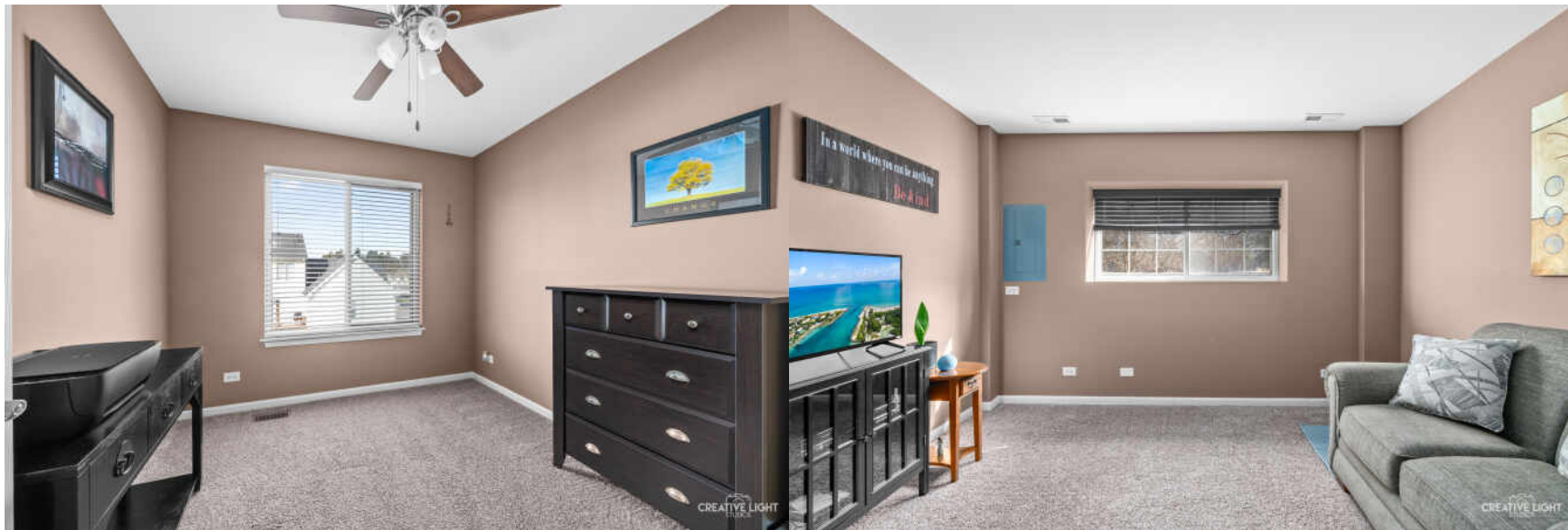
3 BEDROOM  
2.1 BATH  
TAXES: \$5,149  
ASSESSMENTS: \$269 / MONTH

Welcome to this spacious Lincoln Station Condo with three levels of living. Very spacious, open, bright floorplan with private entrance and many upgrades! Main Level Features Living Room, Dining Room and Kitchen with Beautiful Tile Floors and Tons of Natural Light. The kitchen has upgraded cabinets, stainless steel appliances, upgraded lighting and table nook area leads to a private balcony ~ great for grilling. Finished Lower Level Makes for a Great Family Room or Office and Provides Exterior Access To 2 Car Garage. The second floor is highlighted by the Master Bedroom with walk in closet, vaulted ceilings, private bathroom. The second and third Bedroom are very spacious with nice size closets. Location is GREAT! Minutes away from shopping and restaurants.













## **OSWEGO** IS A CLOSE-KNIT COMMUNITY THAT HOLDS TRUE TO ITS MOTTO OF “A TOWN THAT PEOPLE ARE PROUD TO CALL HOME.”

Incorporated in 1852, the village is situated at the southern end of the Fox River Valley in Kendall County, approximately 50 miles southwest of Chicago. Despite a rapidly growing population and an increase in residential construction, the village has maintained its small-town charm with a historic downtown that includes shops, restaurants, and the Oswego Public Library.

The Oswegoland Park District offers residents an abundance of recreational programs, hundreds of acres of parks, bike trails, playgrounds, and facilities including an aquatic center. The village is also home to the Fox Bend Golf Course, an 18-hole public course that has hosted three Illinois Opens. Throughout the year, the community hosts events and festivals such as the four-day PrairieFest, which features a carnival, parade, and delicious food.

Rush-Copley Medical Center and Edward Hospital are located in Oswego and offer progressive technology and care to the community.



[illegible]



## JED PARISH

(630) 688-6672

JEDPARISH@ATPROPERTIES.COM



All specifications, features, designs, price, assessments, taxes and materials are subject to change without notice. Depicted floor plans and architectural renderings are only an artist's impression.

