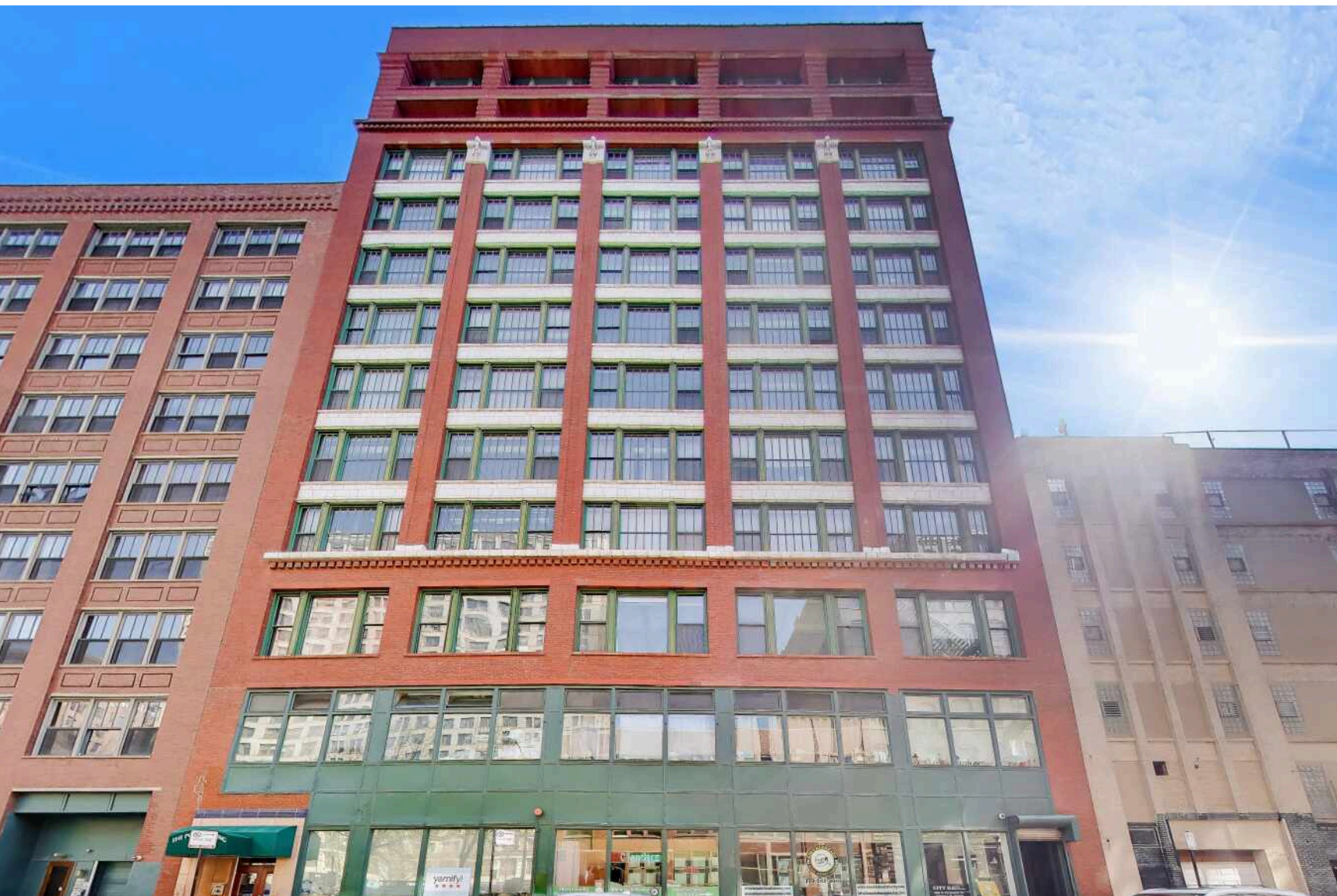


633 S PLYMOUTH COURT #1107
PRINTER'S ROW



@properties®

CHRISTIE'S
INTERNATIONAL REAL ESTATE

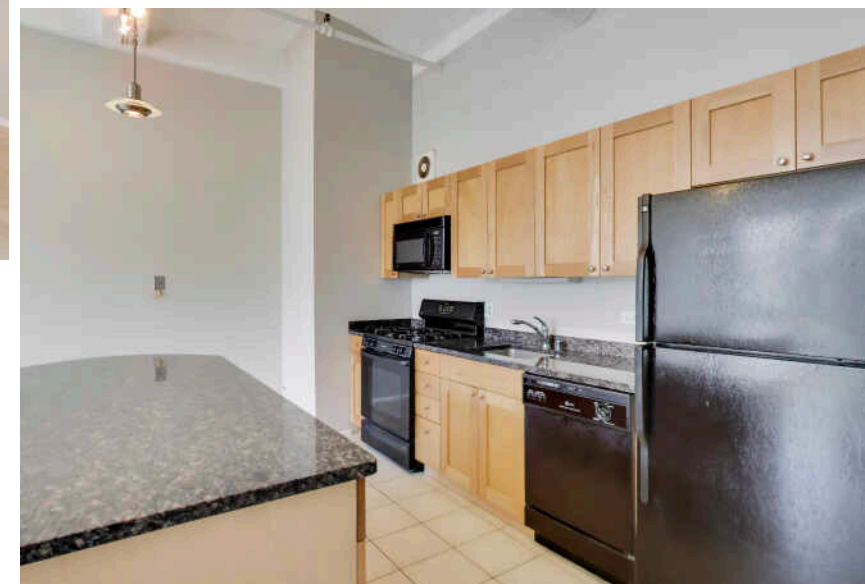
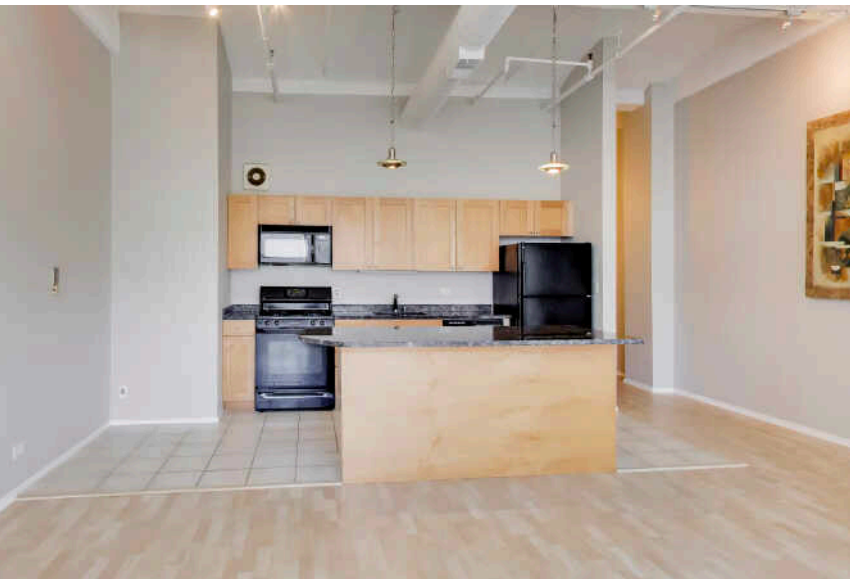


TRUE CHICAGO LOFT IN THE HEART OF PRINTER'S ROW

This well-maintained studio features soaring 12-ft barrel-vaulted ceilings and a unique glass block bedroom division that creates a distinct sleeping area while maintaining an open, airy feel with a touch of retro character. The space is filled with natural light, enhancing the expansive layout and highlighting the classic loft charm. The spacious kitchen is equipped with maple cabinetry, granite countertops, and GE appliances, offering both style and functionality. The bathroom has been tastefully updated with striking cobalt blue subway tile in the tub area, adding a bold and modern design element. With no rental cap in the building, this home blends vintage loft appeal with unique updates, including a complete sound system in the bathroom, making it an ideal city sanctuary for yourself, or an investment opportunity. Enjoy pet-friendly living, convenient public transportation, restaurants, shopping, and rental parking options available nearby. Make this home yours today!

1 BEDROOM
1 BATH
TAXES: \$3,929
ASSESSMENTS: \$789 / MONTH





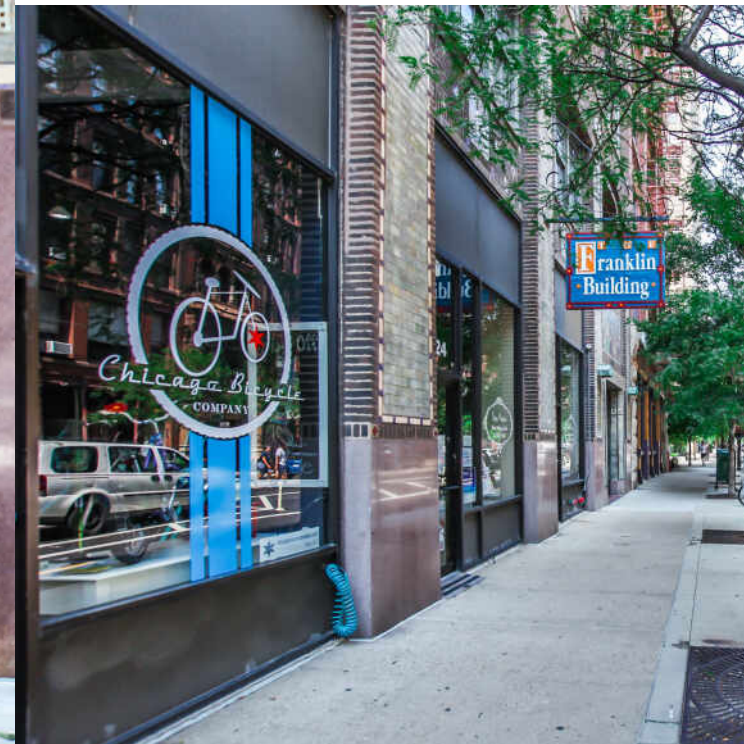


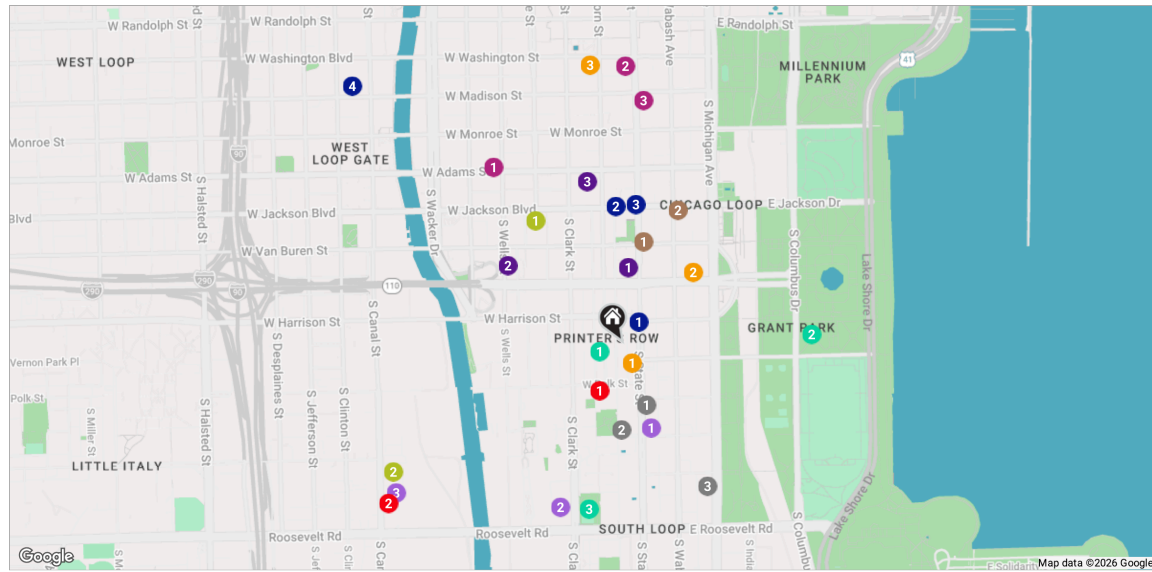
PRINTER'S ROW WAS ONCE A THRIVING CENTER OF PRINTING AND PUBLISHING BUSINESSES; TODAY IT IS A COZY ENCLAVE WITHIN THE SOUTH LOOP.

The businesses of the past are gone but the books and buildings remain. Industrial-era buildings dating back as far as 1886 have been converted into residential lofts, while the annual Printer's Row Lit Fest celebrates the area's history every year. The Printing House Row District is an official landmark district.

The neighborhood is centered along Dearborn Street and bounded by Congress Parkway, Polk Street, Clark Street and State Street. Residents enjoy a farmers market and the historic Dearborn Station as well as local bookstores, restaurants and bars.

The neighborhood is close to the lake, The Loop, Museum Campus, Millennium Park, Michigan Avenue shopping and CTA "L" stops.





RESTAURANTS

- 1 Lou Malnati's Pizzeria
805 SOUTH STATE STREET, 0.2 MI
- 2 Chicago Curry House - Indian - Nepali Cuisine.
899 SOUTH PLYMOUTH COURT, 0.2 MI
- 3 Yolk - South Loop
1120 SOUTH MICHIGAN AVENUE, 0.4 MI

COFFEE

- 1 Dunkin'
DEPAUL CENTER UNIVERSITY, 0.2 MI
- 2 Starbucks Coffee Company
55 EAST JACKSON BOULEVARD, 0.3 MI

SHOPPING

- 1 Walgreens
200 WEST ADAMS STREET, 0.5 MI
- 2 Nordstrom Rack
24 NORTH STATE STREET, 0.6 MI

- 3 Target
1 SOUTH STATE STREET, 0.6 MI

GROCERY

- 1 South Loop Market - 9th Street
8 EAST 9TH STREET, 0.2 MI
- 2 Target Grocery
1154 SOUTH CLARK STREET, 0.4 MI
- 3 Whole Foods Market
1101 SOUTH CANAL STREET SUITE 107, 0.6 MI

GYM

- 1 Tejas Yoga
141 WEST JACKSON BOULEVARD #750, 0.3 MI
- 2 LA Fitness
1101 SOUTH CANAL STREET, 0.6 MI

MEDICAL

- 1 UChicago Medicine Dearborn Station
47 WEST POLK STREET # G-1, 0.1 MI

- 2 UChicago Medicine - South Loop
1101 SOUTH CANAL STREET SUITE 201-202, 0.7 MI

SCHOOLS

- 1 Jones College Prep
700 SOUTH STATE STREET, 0.1 MI
- 2 Roosevelt University
430 SOUTH MICHIGAN AVENUE, 0.2 MI
- 3 Bright Horizons at Cook County/City of Chicago CDC
40 NORTH DEARBORN STREET, 0.6 MI

TRANSIT

- 1 Harrison
CTA - RED LINE, 0.1 MI
- 2 Harold Washington Library
CTA - ORANGE LINE, 0.3 MI
- 3 Jackson
CTA - RED LINE, 0.3 MI
- 4 Ogilvie Transportation Center
METRA - UNION PACIFIC WEST, 0.9 MI

PARKS

- 1 Printers Row Park
632 SOUTH DEARBORN STREET, 0.1 MI
- 2 Grant Park
CHICAGO, 0.4 MI
- 3 Roosevelt (Theodore) Park
62 WEST ROOSEVELT ROAD, 0.4 MI

SERVICES

- 1 Harold Washington Library Center, Chicago Public Library
400 SOUTH STATE STREET, 0.2 MI
- 2 Chicago Fire Department Engine Company 1
419 SOUTH WELLS STREET, 0.3 MI
- 3 United States Postal Service
211 SOUTH CLARK STREET, 0.4 MI

NOTES



HARMONY ZHANG

520.349.4886

HARMONY@HUNTCHICAGO.COM