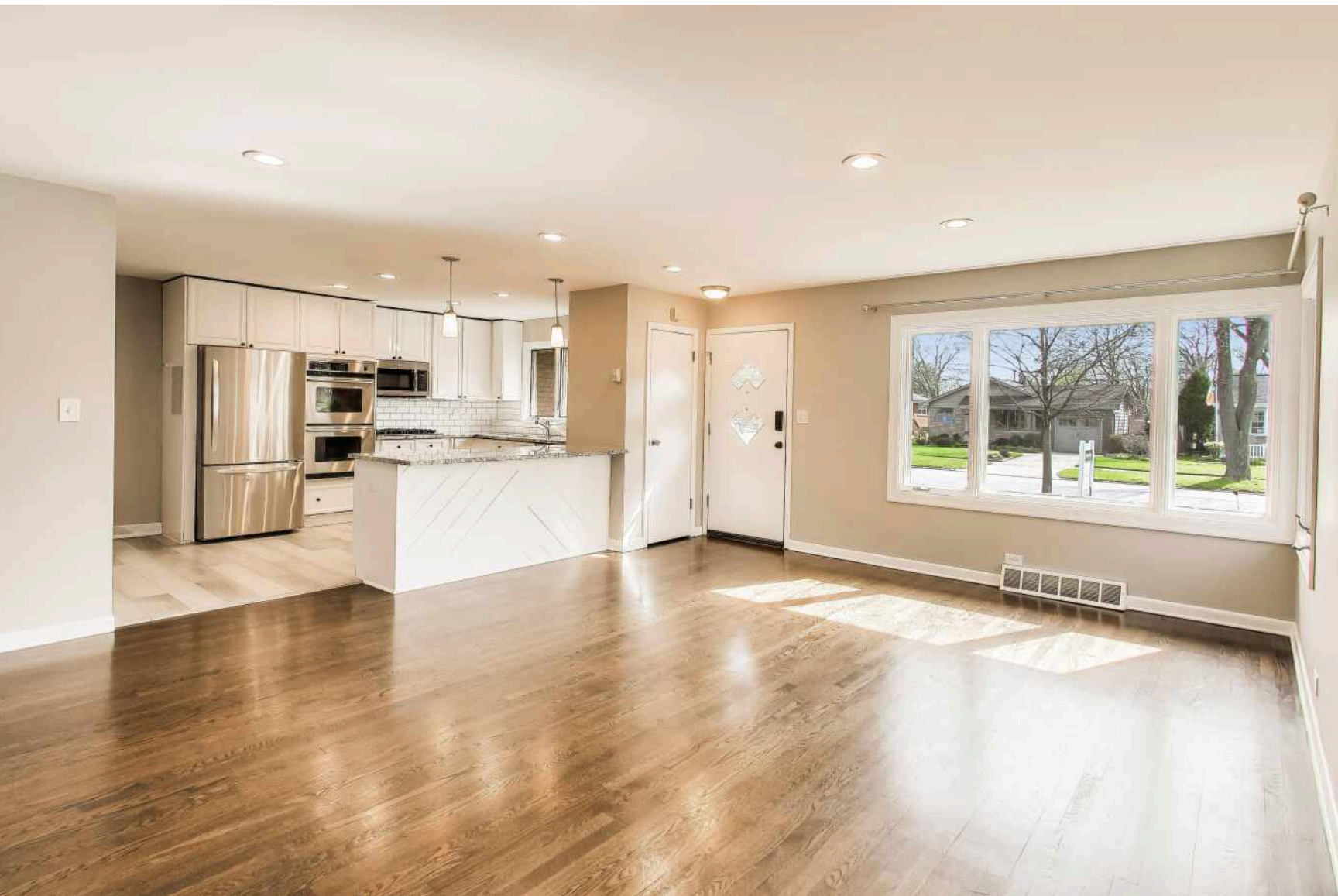


634 S STEWART AVENUE
LOMBARD





ROOM DIMENSIONS

LIVING ROOM : 18' × 16'

KITCHEN : 15' × 12'

PRIMARY BEDROOM : 10' × 15'

BEDROOM : 11' × 11'

BEDROOM : 10' × 11'

LOWER LEVEL BEDROOM : 12' × 12'

LOWER LEVEL KITCHEN : 9' × 10'

LOWER LEVEL LIVING ROOM : 17' × 17'

3, + 1 LOWER LEVEL BEDROOM

3 BATH

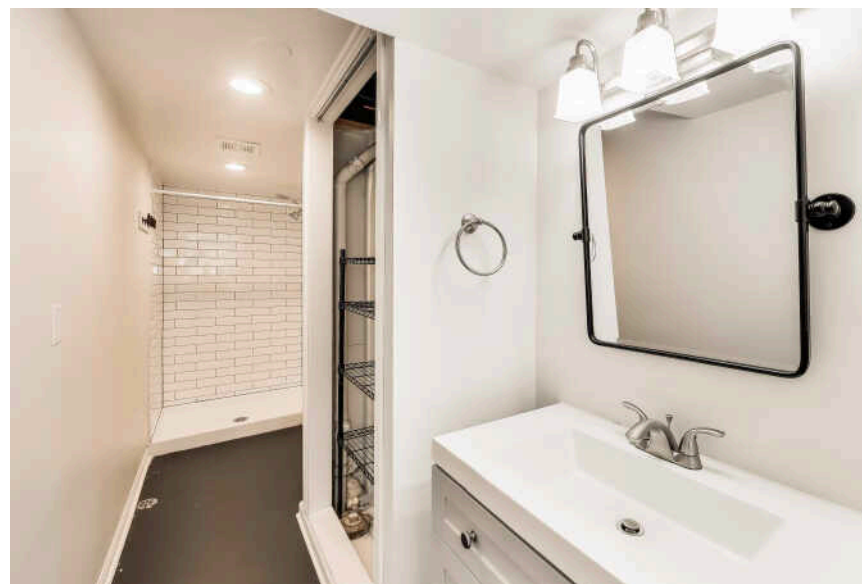
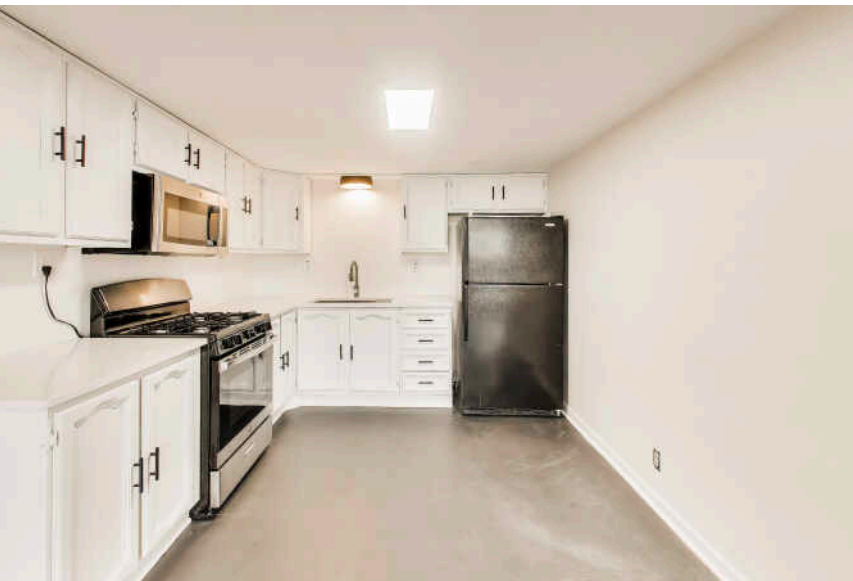
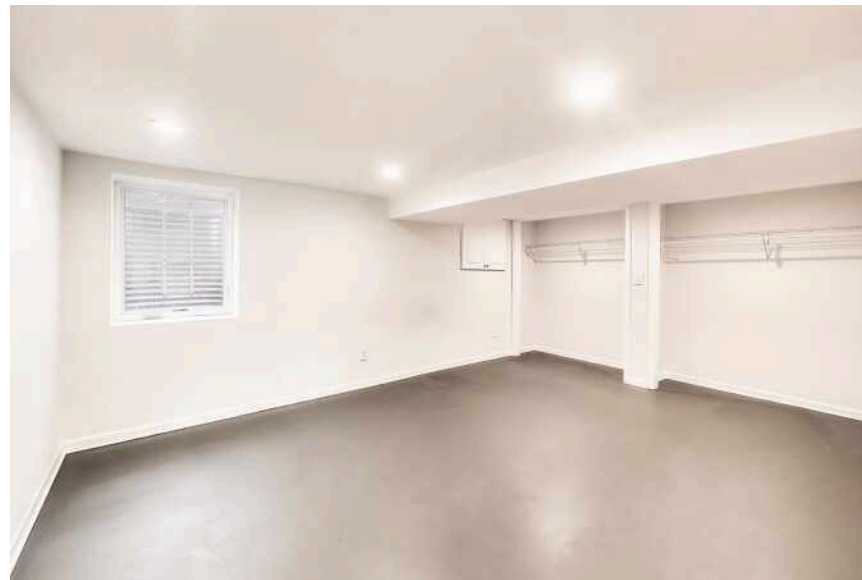
TAXES: \$6,991

REFRESHED RANCH. RELATED LIVING. PRIME LOMBARD LOCATION.

Bright, sun-filled and thoughtfully updated, this refreshed ranch offers open-concept living on the main level featuring 3 bedrooms and 2 full baths, along with an open kitchen and living area perfect for everyday living. The finished lower level provides a rare flexible setup ideal for related living, with a separate kitchen, bedroom and full bath, along with tons of storage and laundry. The home sits on a large lot, with outdoor space that offers a nicely sized covered patio, as well as tons of green space that can easily be transformed into an outdoor oasis. Close proximity to area parks, shopping and modern amenities. High ticket updates throughout the home include:

- Freshly painted interior - living room and bedrooms (2026)
- Basement kitchen and bath renovated (2021)
- Roof and window replaced (2021)
- Updated kitchen design including open-concept layout, cabinetry and appliances (2020)
- Main level bathrooms renovated (2020)
- Hardwood flooring (2020)
- Furnace replacement (2020)







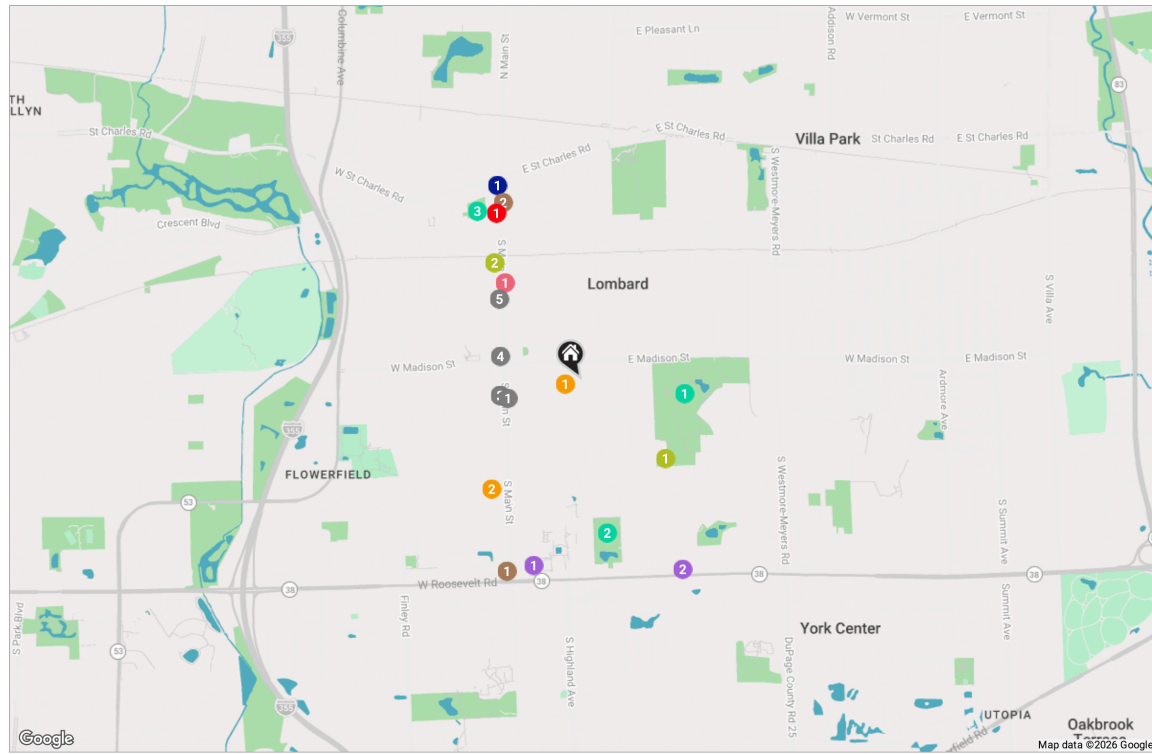
DESIGNATED THE "LILAC VILLAGE," **LOMBARD** IS CHARACTERIZED BY ITS QUAIN, TREE-LINED STREETS AND CLOSE-KNIT COMMUNITY.

Lombard residents are proud of the village's rich history, diverse entertainment opportunities, and unique seasonal events such as Cruise Nights and Summer Concert Series, which puts vintage vehicles and live music on display throughout the summer.

Since 1930, the village has hosted an annual lilac festival and parade in May. Lilac Time is Lombard's famed 16-day horticultural festival held at the beautiful Lilacia Park. Several other lilac-themed events take place throughout the year, including a formal ball, concerts, wine and beer tastings in the park, and an arts and crafts fair.

Metra's Union Pacific West Line railway stops in Lombard, providing commuter transportation to downtown Chicago.





RESTAURANTS

- 1 Bumper 2 Burger | Hamburger restaurant
715 SOUTH MAIN STREET, 0.3 MI
- 2 Johnny Coco's
704 SOUTH MAIN STREET, 0.4 MI
- 3 Triano's Pizza & Beef
704 SOUTH MAIN STREET, 0.4 MI
- 4 Taqueria Mexico 2000 Lombard
592 SOUTH MAIN STREET, 0.4 MI
- 5 Gianorio's Pizza & Pasta
434 SOUTH MAIN STREET, 0.5 MI

COFFEE

- 1 Dunkin'
1160 SOUTH MAIN STREET, 0.9 MI
- 2 MOTW Coffee and Pastries
109 SOUTH MAIN STREET, 0.9 MI

GROCERY

- 1 Jewel-Osco
1177 SOUTH MAIN STREET, 0.9 MI
- 2 Mediterranean Market
612 EAST ROOSEVELT ROAD, 1.0 MI

GYM

- 1 Madison Meadow Athletic Center
500 EAST WILSON AVENUE, 0.5 MI

SCHOOLS

- 2 Foundation Fitness Club
12 WEST WILLOW STREET, 0.7 MI
- 1 Endeavor Health | Health Center - Lombard
130 SOUTH MAIN STREET, 0.9 MI
- 1 Hammerschmidt Elementary School
617 HAMMERSCHMIDT AVENUE, 0.1 MI
- 2 Glenbard East High School
VX8H+HJ, 0.7 MI

ENTERTAINMENT

- 1 Helen Plum Library
411 SOUTH MAIN STREET, 0.6 MI

TRANSIT

- 1 Lombard
METRA - UNION PACIFIC WEST, 1.0 MI

PARKS

- 1 Lombard Park District - Madison Meadow
E MADISON ST & S AHRENS AVE, 0.5 MI
- 2 Southland Park
SOUTH GRACE STREET, 0.7 MI
- 3 Lilacia Park
150 SOUTH PARK AVENUE, 0.9 MI

NOTES



NICOLE HEAVRIN

312.301.9172

NICOLEHEAVRIN@ATPROPERTIES.COM