



638 GLENAYRE DRIVE GLENVIEW



638 GLENAYRE DRIVE • GLENVIEW

@properties | CHRISTIE'S
INTERNATIONAL REAL ESTATE

LP LUXURY
PORTFOLIO
INTERNATIONAL



KATIE HACKETT BAISLEY BROKER

847.271.3733 mobile
katiehackett@atproperties.com

khh
residential

638 GLENAYRE DRIVE • GLENVIEW





638 GLENAYRE DRIVE GLENAYRE PARK

ROOM DIMENSIONS

Living Room	23'x16'
Family Room	23'x17'
Dining Room	12'x12'
Kitchen	18'x18'
Primary Bedroom	22'x12'
Second Bedroom	17'x14'
Third Bedroom	17'x12'
Fourth Bedroom	14'x18'

FEATURES

Stunning white brick colonial in premier Glenayre Park. This magnificent 4 bedroom, 3.5 bathroom home sits gracefully on nearly 1/2 acre. Spectacular chef's kitchen - featuring white cabinetry, large island, breakfast bar, quartz countertops, and stainless-steel appliances. The charming breakfast nook, overlooking the private backyard through three sets of French doors, makes every morning feel peaceful. Flow seamlessly from the elegant formal living room with its cozy gas fireplace and beautiful bay window into the sophisticated dining room. The oversized family room offers the ideal retreat with its inviting fireplace and brand-new custom bar area complete with built-ins and beverage fridge. This home delivers with a tucked-away office. The thoughtfully designed mudroom features built-in cubbies and durable tile flooring, creating an organized transition from the heated 2.5 car garage. Adjacent laundry room keeps daily routines seamless. Retreat to the generously sized primary suite. The spacious bedroom flows into a huge walk-in closet and stunning spa-like ensuite bathroom featuring a custom dual-sink vanity and breathtaking Carrara marble walk-in shower - your personal sanctuary for relaxation. Three additional well-appointed family bedrooms provide comfortable accommodations, with two sharing a gorgeous new Jack & Jill bathroom complete with dual vanities, custom shelving, and beautiful tile shower. The fourth bedroom enjoys access to the charming hall bath. The finished basement expands your living space with built-in bookshelves and a convenient wet bar. Step outside to discover a beautifully landscaped backyard enclosed by attractive new fencing and expansive patio.



KATIE HACKETT BAISLEY BROKER
847.271.3733 mobile katiehackett@atproperties.com







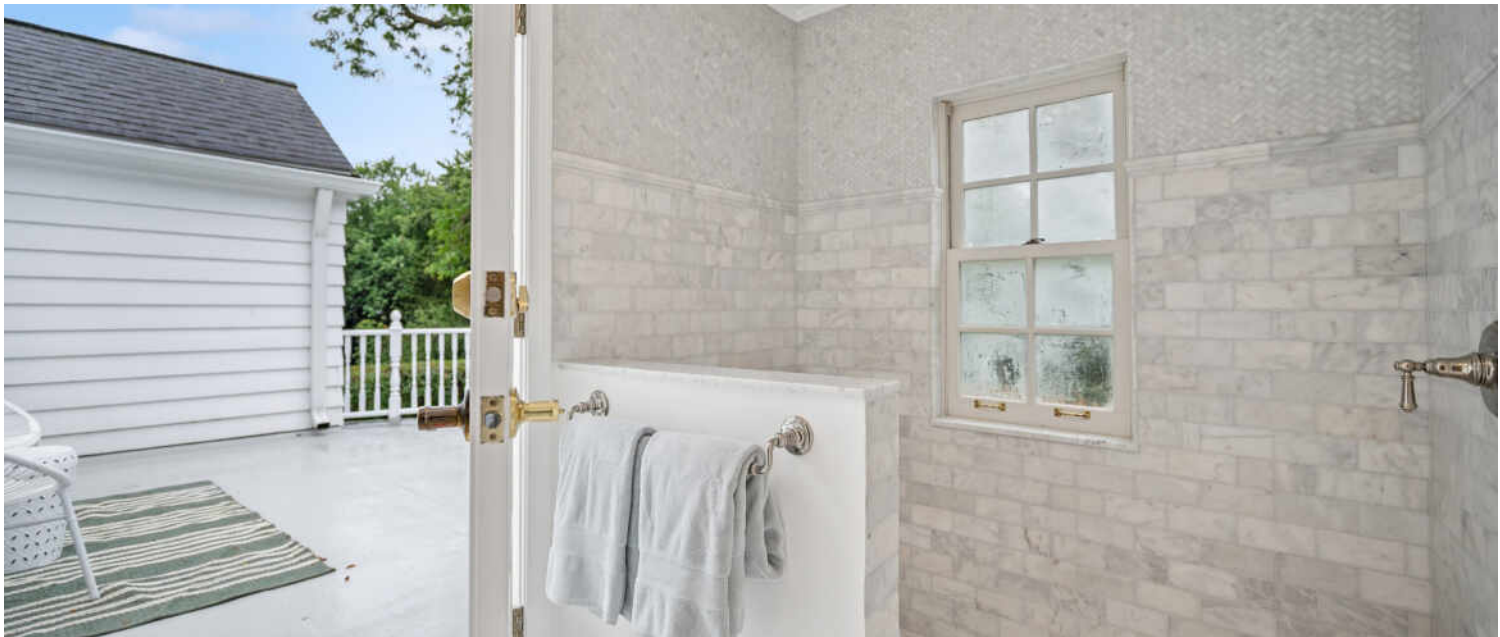






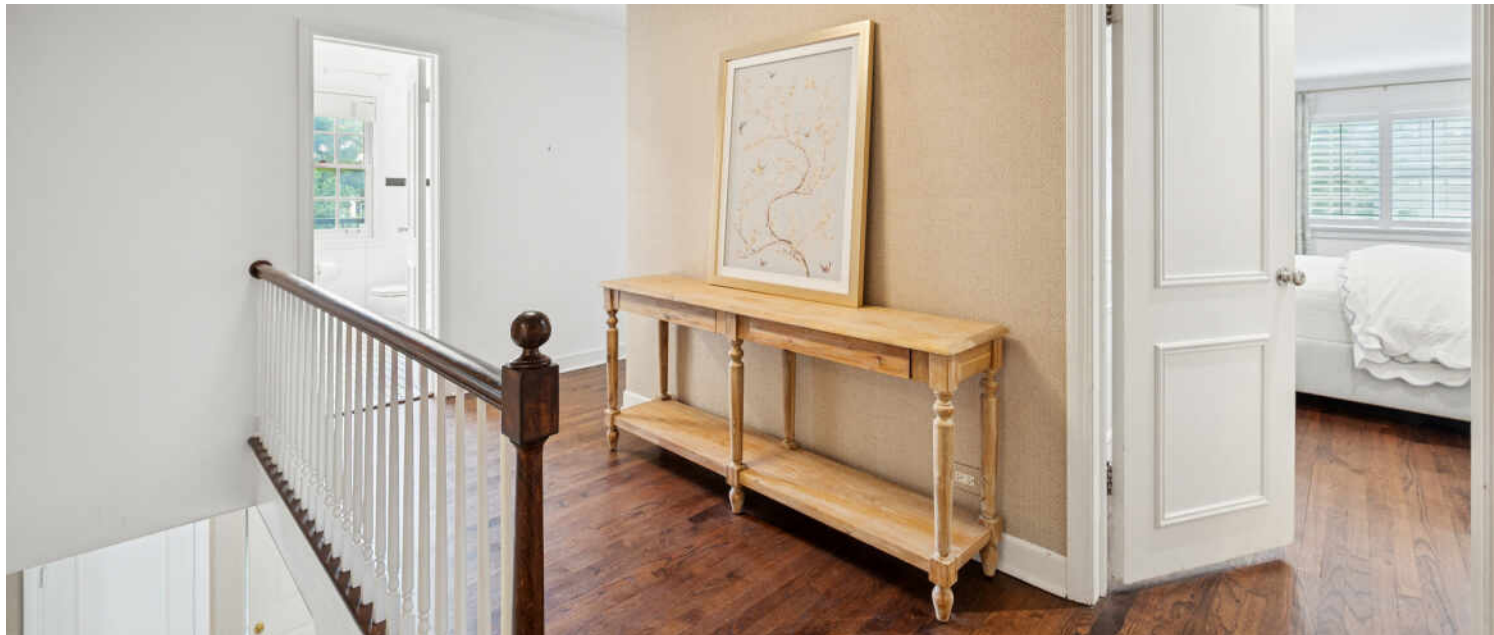








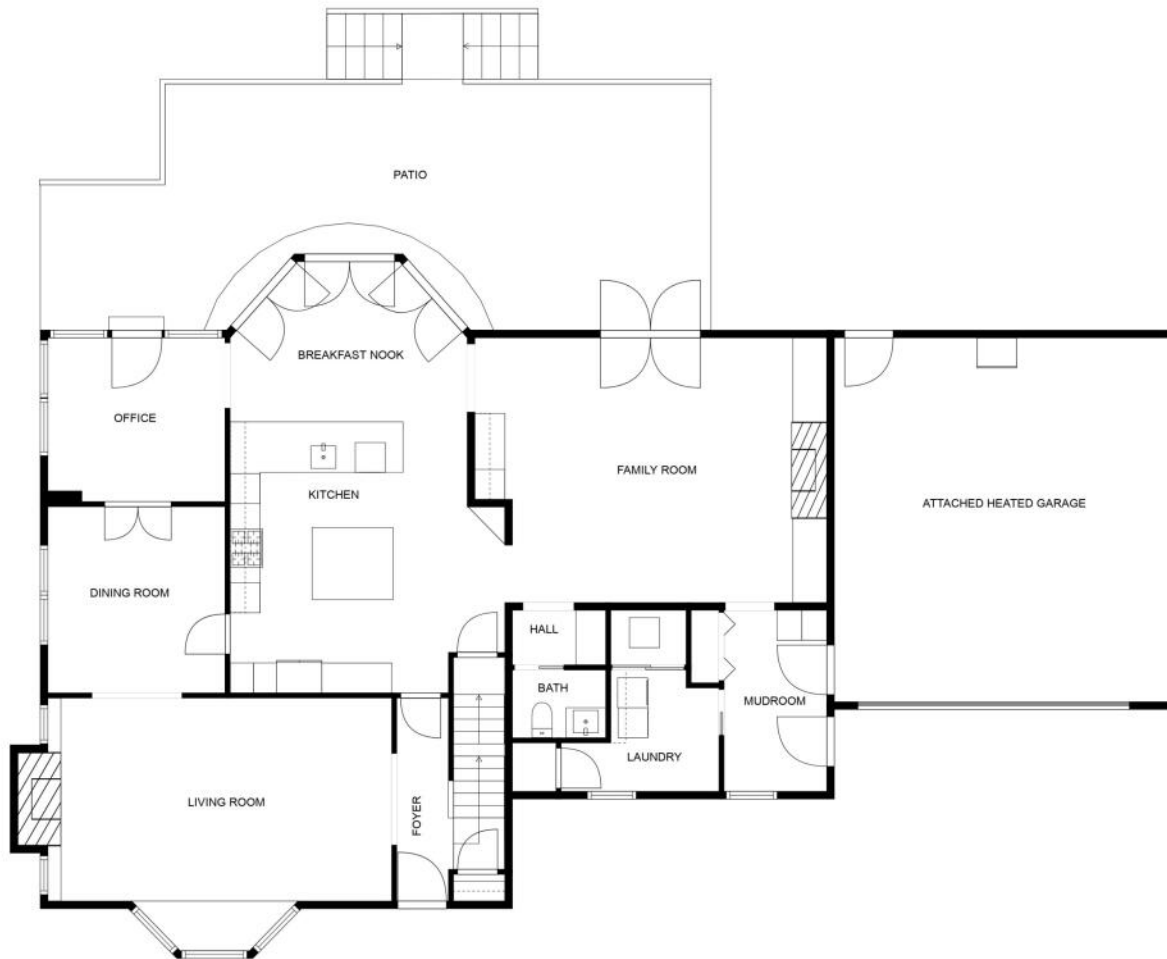




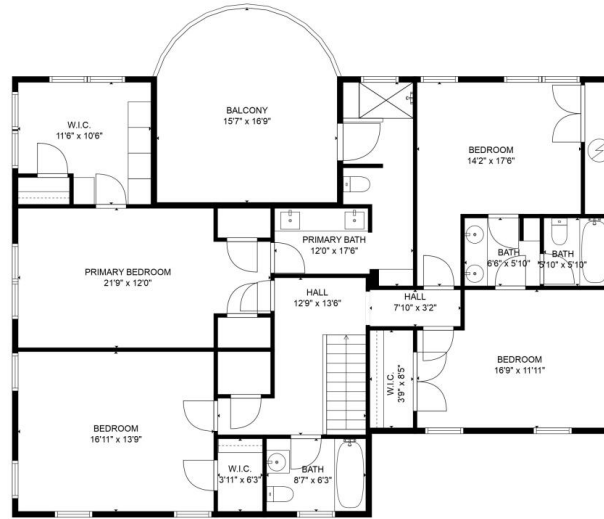






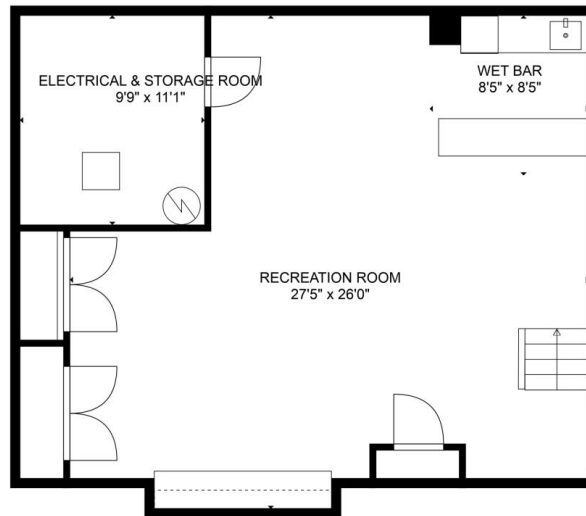


FLOOR PLAN CREATED BY CUBICASA APP. MEASUREMENTS DEEMED HIGHLY RELIABLE BUT NOT GUARANTEED.



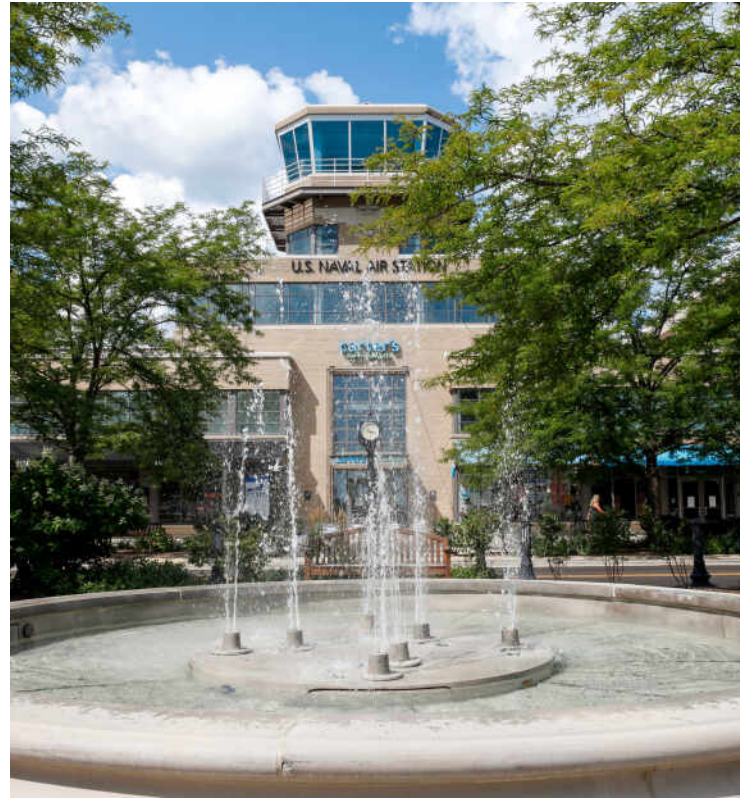
TOTAL: 4014 sq. ft.
 BELOW GROUND: 634 sq. ft., FLOOR 2: 1822 sq. ft., FLOOR 3: 1558 sq. ft.
 EXCLUDED AREAS: ELECTRICAL & STORAGE ROOM: 108 sq. ft., UNDEFINED: 7 sq. ft., ATTACHED HEATED GARAGE: 525 sq. ft.,
 PATIO: 660 sq. ft., FIREPLACE: 14 sq. ft., BALCONY: 236 sq. ft.,
 WALLS: 280 sq. ft.

FLOOR PLAN CREATED BY CUBICASA APP. MEASUREMENTS DEEMED HIGHLY RELIABLE BUT NOT GUARANTEED.



TOTAL: 4014 sq. ft.
 BELOW GROUND: 634 sq. ft., FLOOR 2: 1822 sq. ft., FLOOR 3: 1558 sq. ft.
 EXCLUDED AREAS: ELECTRICAL & STORAGE ROOM: 108 sq. ft., UNDEFINED: 7 sq. ft., ATTACHED HEATED GARAGE: 525 sq. ft.,
 PATIO: 660 sq. ft., FIREPLACE: 14 sq. ft., BALCONY: 236 sq. ft.,
 WALLS: 280 sq. ft.

FLOOR PLAN CREATED BY CUBICASA APP. MEASUREMENTS DEEMED HIGHLY RELIABLE BUT NOT GUARANTEED.



JUST 20 MILES FROM DOWNTOWN CHICAGO, **GLENVIEW** IS A DESTINATION IN ITS OWN RIGHT.

Locals love the many parks and recreational facilities that are maintained by the Glenview Park District, along with highly-rated schools, easily-accessible public transportation, and shopping centers such as The Glen.

The scenic North Shore town has expanded rapidly thanks to its established neighborhoods, convenient access to transportation, and array of amenities.

More than 45,000 people call Glenview home, with properties ranging from townhomes and condominiums to luxury custom homes featuring the latest amenities. Newer homes can also be found at The Glen, a large development on the site of the former Glenview Naval Air Station that offers an assortment of shops and restaurants, a movie complex, the Kohl Children’s Museum, and access to one of the town’s two Metra stations.

Glenview is served by a number of public and private schools, including Glenbrook South High School, ranked among the top in the nation according to Business Insider.

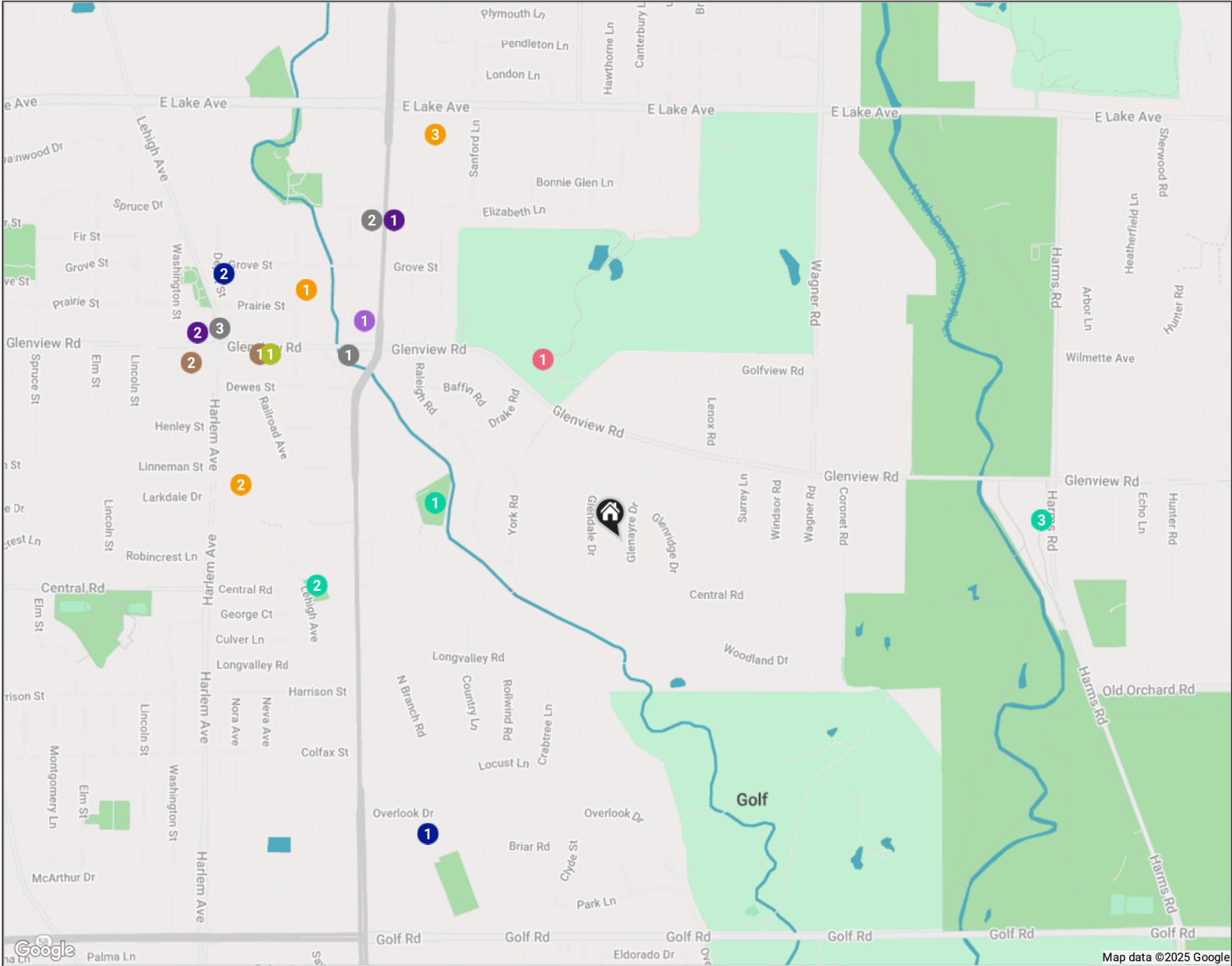
The Glenview Park District offers indoor and outdoor pools, golf courses, soccer fields, nature trails, an ice center, tennis club, and multi-purpose community center.

In addition to modern development, Glenview celebrates and preserves its early days with two notable attractions: Wagner Farm and The Grove. A 20-acre working farm, Wagner Farm has hands-on programs – horseback riding, tractor driving, and other activities – that reflect a day in the life of a 1920s farmer. The Grove, a National Historic Landmark, includes a prairie, nature trails, historic buildings, and a log cabin that dates back to the 1850s.

NEIGHBORHOOD GUIDE MAP

638 GLENAYRE DRIVE

22



NEIGHBORHOOD GUIDE

RESTAURANTS _____

- 1 Jackman & Co.
1749 GLENVIEW ROAD, 0.7 MI
- 2 Spiro's Deli
1210 WAUKEGAN ROAD, 0.8 MI
- 3 Glenview Dairy Bar
1015 LEHIGH AVENUE, 0.9 MI

COFFEE _____

- 1 Glenview Grind
1837 GLENVIEW ROAD, 0.8 MI
- 2 Dunkin'
980 HARLEM AVENUE #23, 1.0 MI

GROCERY _____

- 1 Heinen's Grocery Store
1020 WAUKEGAN ROAD, 0.7 MI

GYM _____

- 1 CorePower Yoga - Glenview
1819 GLENVIEW ROAD, 0.8 MI

SCHOOLS _____

- 1 Our Lady of Perpetual Help Catholic School
1123 CHURCH STREET, 0.8 MI

- 2 GMPS: Glenview Methodist Preschool
727 HARLEM AVENUE, 0.8 MI

- 3 Lyon Elementary School
1335 WAUKEGAN ROAD, 0.9 MI

ENTERTAINMENT _____

- 1 North Shore Country Club
1340 GLENVIEW ROAD, 0.4 MI

TRANSIT _____

- 1 Golf
METRA - MILWAUKEE DISTRICT NORTH, 0.7 MI
- 2 Glenview
METRA - MILWAUKEE DISTRICT NORTH, 1.0 MI

PARKS _____

- 1 Judy Beck Park
735 CARRIAGE HILL DRIVE, 0.4 MI
- 2 Central Park
GLENVIEW, 0.6 MI
- 3 Glenview Woods
HARMS ROAD, 0.9 MI

SERVICES _____

- 1 Glenview Fire Station 6
1215 WAUKEGAN ROAD, 0.8 MI
- 2 Glenview Public Library
1930 GLENVIEW ROAD, 1.0 MI

NO REPRESENTATIONS ARE MADE REGARDING THE ACCURACY OF THE INFORMATION PROVIDED.
ALL DATA IS SUBJECT TO CHANGE AND SHOULD BE VERIFIED WITH LOCAL SOURCES.

