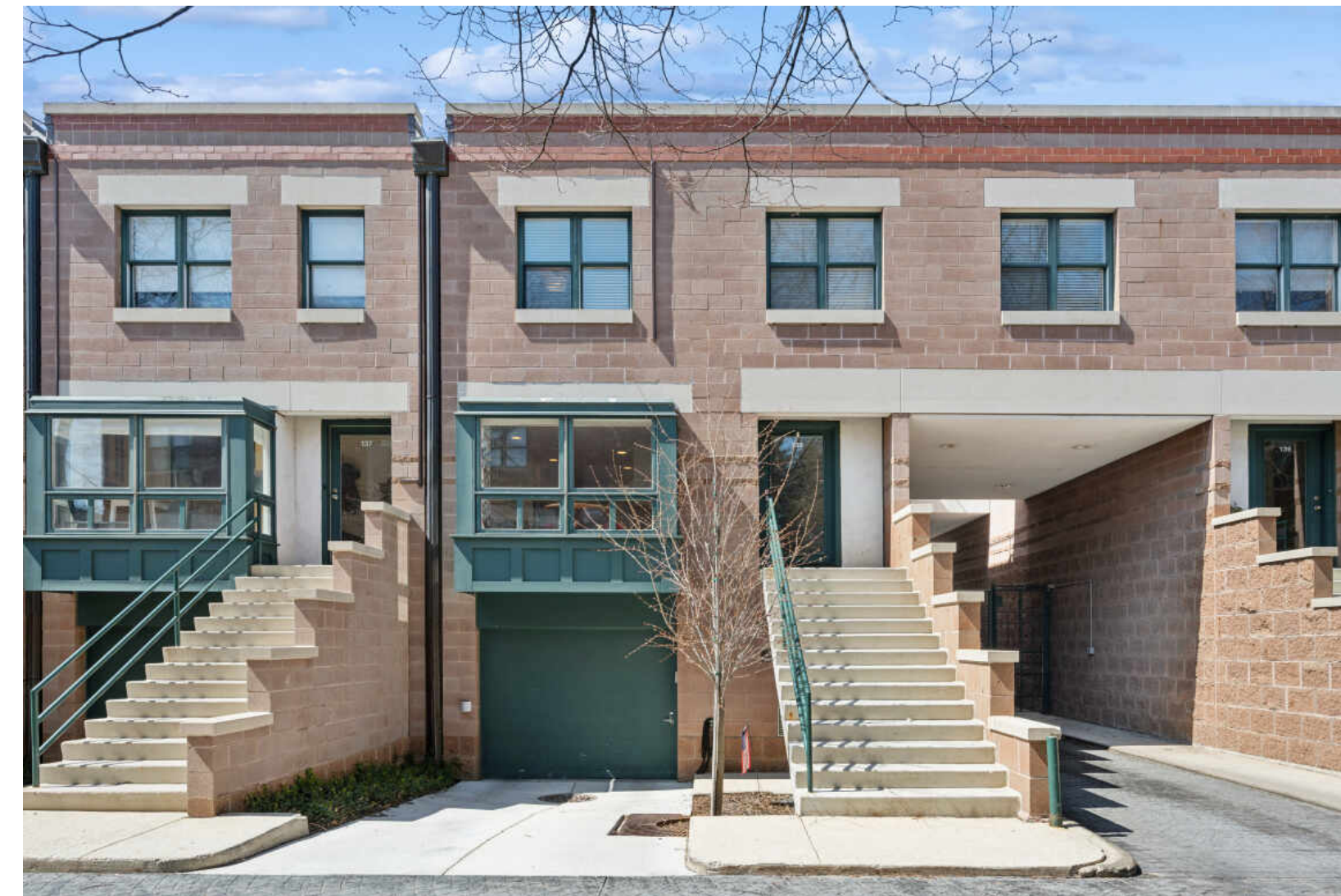




641 W. WILLOW #138 LINCOLN PARK

641 W. WILLOW #138 • LINCOLN PARK



@properties | CHRISTIE'S
INTERNATIONAL REAL ESTATE

LUXURY
PORTFOLIO
INTERNATIONAL



K.C. LAU REAL ESTATE CONSULTANT

312.315.7163 mobile
kclau@atproperties.com
atproperties.com/agents/kclau

KC
LAU

641 W. WILLOW #138 • LINCOLN PARK





LIVING ROOM

641 W WILLOW STREET #138 RARELY AVAILABLE 4BR/3.1BA TOWNHOME IN GATED CITY COMMONS

ROOM DIMENSIONS

Living Room	19'x14'
Dining Room	15'x10'
Kitchen	21'x12'
Family Room	19'x15'
Primary Bedroom	19'x13'
2nd Bedroom	18'x13'
3rd Bedroom	14'x10'
4th Bedroom	17'x13'
Rooftop Deck	19'x19'
Patio	19'x12'

FEATURES

Secure & gated community in the heart of Lincoln Park, this rarely available 4BR (all on the same level) 3.5BA townhouse offers an exceptionally tranquil living. As you enter City Commons through the guarded gate, you're greeted by the beautifully manicured grounds. The main floor boasts an incredibly large living/dining room with a built in credenza that's very convenient for entertaining. The kitchen features some of the best stainless steel professional appliances by Viking & Bosch, quartz countertops, plenty of cabinet space and tile by Ann Sacks. Enjoy your morning coffee in the cute little breakfast nook overlooking the lush landscaping while hearing the birds chirping. There's a nicely appointed powder room on this floor that's privately tucked away. Upstairs, there are four generously sized bedrooms, each with organized closets by California Closets & Elfa. The primary suite includes multiple closets, including one walk-in, and built-in cabinets for all of your wardrobe needs. The gorgeous Carrara marble lined primary bathroom includes a double vanity & a whirlpool tub. The 2nd full bathroom on this level is also very well-appointed. The large separate family room in on the lower floor where you'll also find heated floors, the 3rd full bathroom, a wet bar, copious amounts of storage including a huge storage room and the attached garage. Incredible outdoor space with a paved patio accessible through the family room & a rooftop composite wood deck with skyline views. Wood burning fireplace, sound throughout, two car parking (garage + pad)! Lincoln Park Elementary & High School districts. Steps to CTA El & buses, dining, shopping, nightlife, parks, & surrounded by multi-million dollar homes.



K.C. LAU REAL ESTATE CONSULTANT

312.315.7163 mobile

kclau@atproperties.com
atproperties.com/agents/kclau





LIVING ROOM



LIVING ROOM / DINING ROOM



LIVING ROOM



DINING ROOM



KITCHEN



KITCHEN



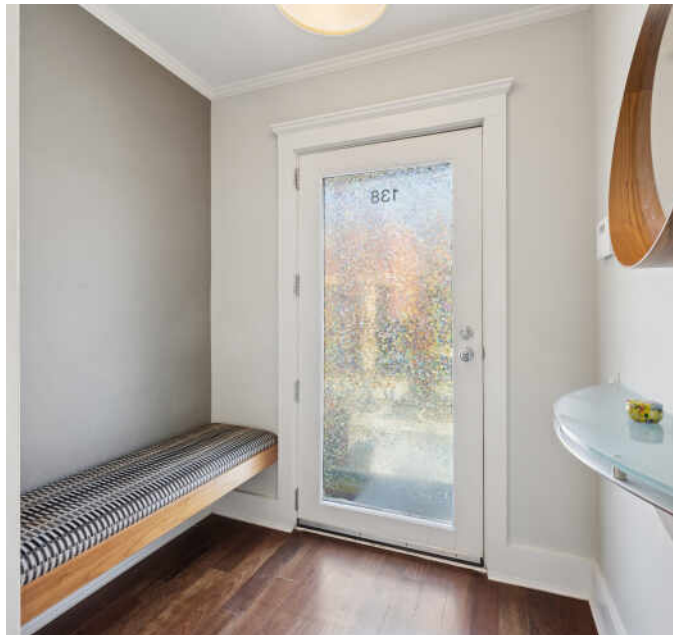
KITCHEN



KITCHEN



BREAKFAST AREA



FOYER



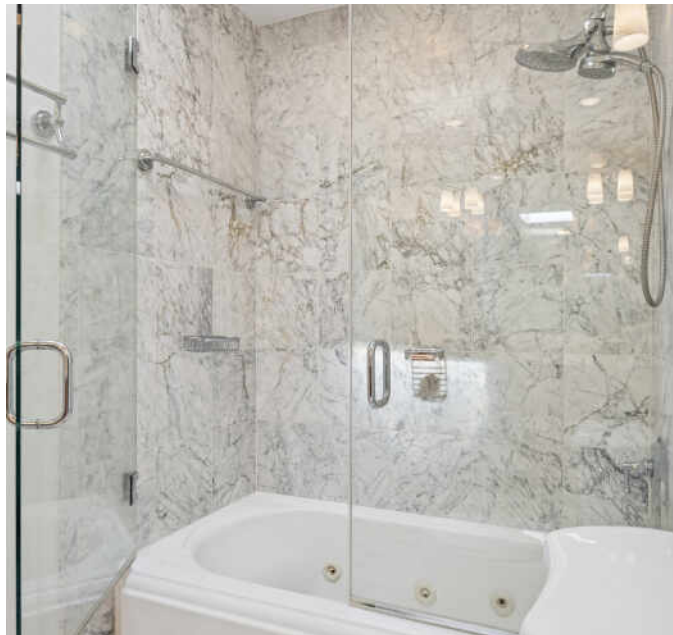
HALF BATH



PRIMARY BEDROOM



PRIMARY BATHROOM



PRIMARY BATHROOM



PRIMARY BEDROOM CLOSET



2ND BEDROOM



HT STUDIOS



4TH BEDROOM



BATHROOM



FAMILY ROOM



FAMILY ROOM



KIDS AREA



3RD BATHROOM



BAR

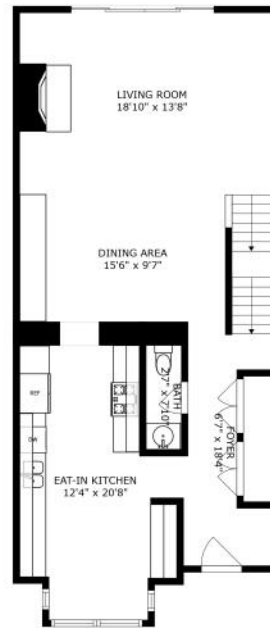


PATIO





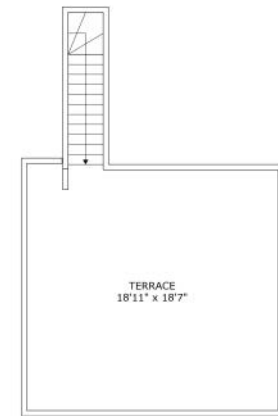
FLOOR 1



FLOOR 2

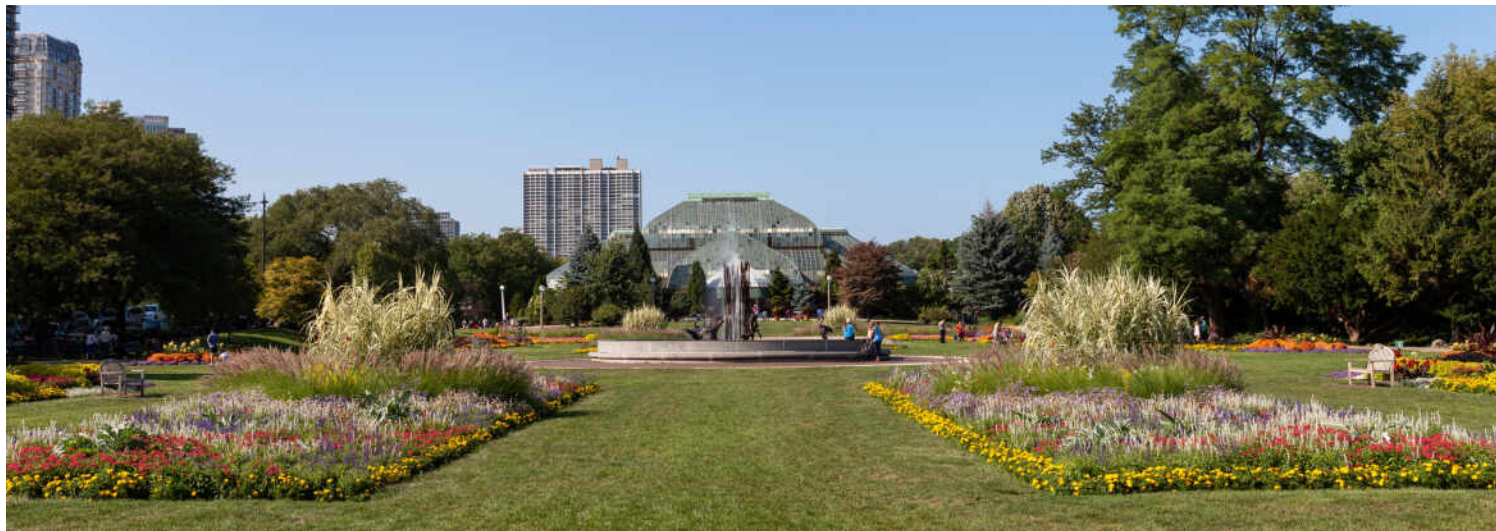


FLOOR 3



FLOOR 4

SIZES AND DIMENSIONS ARE APPROXIMATE, ACTUAL MAY VARY.



LINCOLN PARK RESIDENTS HAVE IT ALL – FROM THE ARTS TO ITS FAMED ZOO – RIGHT IN THEIR BACKYARD.

Locals love the many parks, shops, restaurants and tree-lined streets. The lakefront is another highlight where residents enjoy a variety of leisure activities at North Avenue Beach.

The neighborhood includes quiet tree-lined residential blocks, DePaul University, and two major museums in addition to the Lincoln Park Zoo, one of the country's oldest zoos. There's also a wide array of entertainment, eateries, and hotspots.

An evening in Lincoln Park might include seeing a play at the acclaimed Steppenwolf Theatre and dining at a Michelin-rated restaurant or a quaint neighborhood café. Sports fans will find as many dive bars with the game on as foodies will find fine-dining restaurants with al-fresco seating.

Lincoln Park is just as delightful by day. Residents are close to the lakefront and North Avenue Beach, parks, farmers markets, festivals, and countless shops, ranging from upscale boutiques on Armitage to larger retailers at the Clybourn Corridor.

Housing stock ranges from smaller townhomes and vintage condominiums to rehabs and new construction. Buyers around DePaul University can find loft condominiums in converted factories and warehouses. On its eastern edge, Lincoln Park features beautiful vintage brownstones along with high-rises with breathtaking views of the lake, park, North Pond Nature Sanctuary, and city skyline.

Located just two miles from downtown, Lincoln Park offers residents a quick commute to work. Public transportation abounds, with the CTA's Brown and Red lines serving the neighborhood in addition to several bus routes and Lake Shore Drive.

