

642 W WEBSTER AVENUE #1
LINCOLN PARK



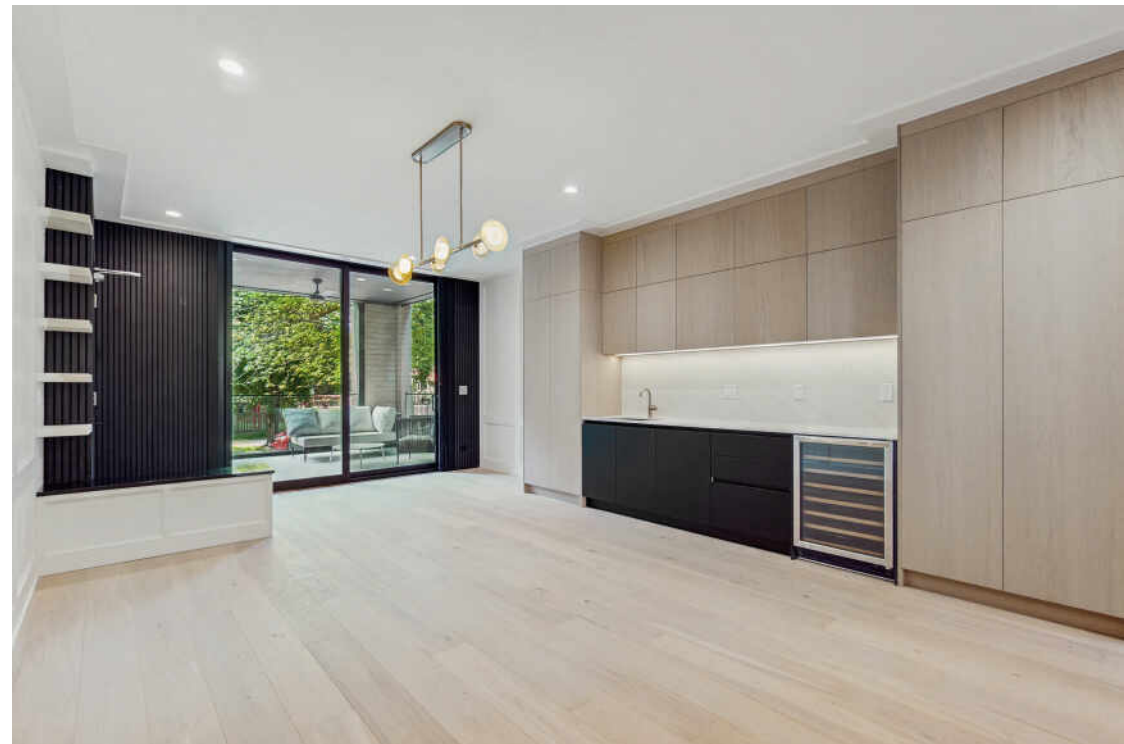


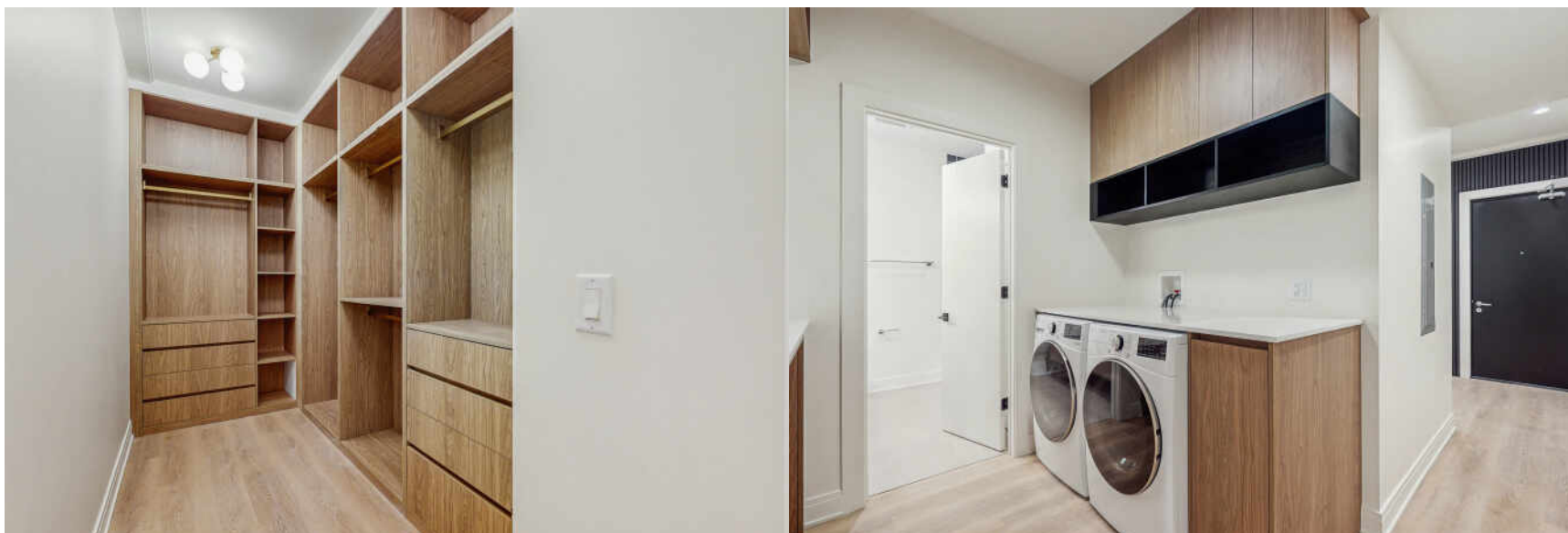
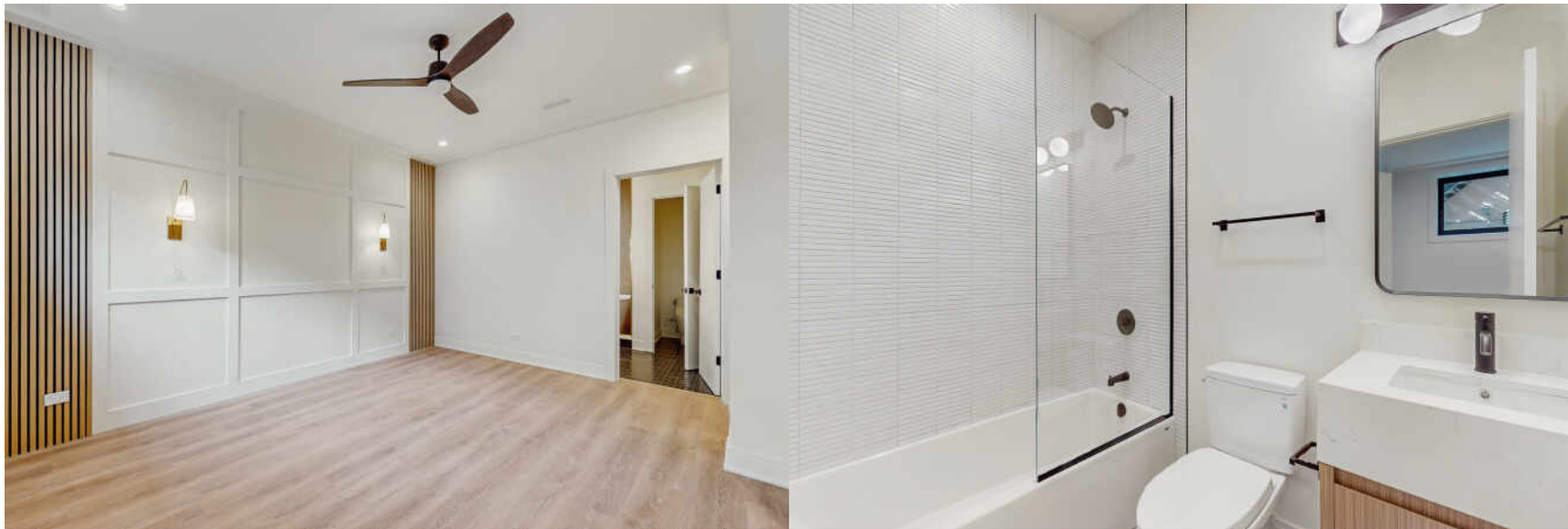
ROOM DIMENSIONS

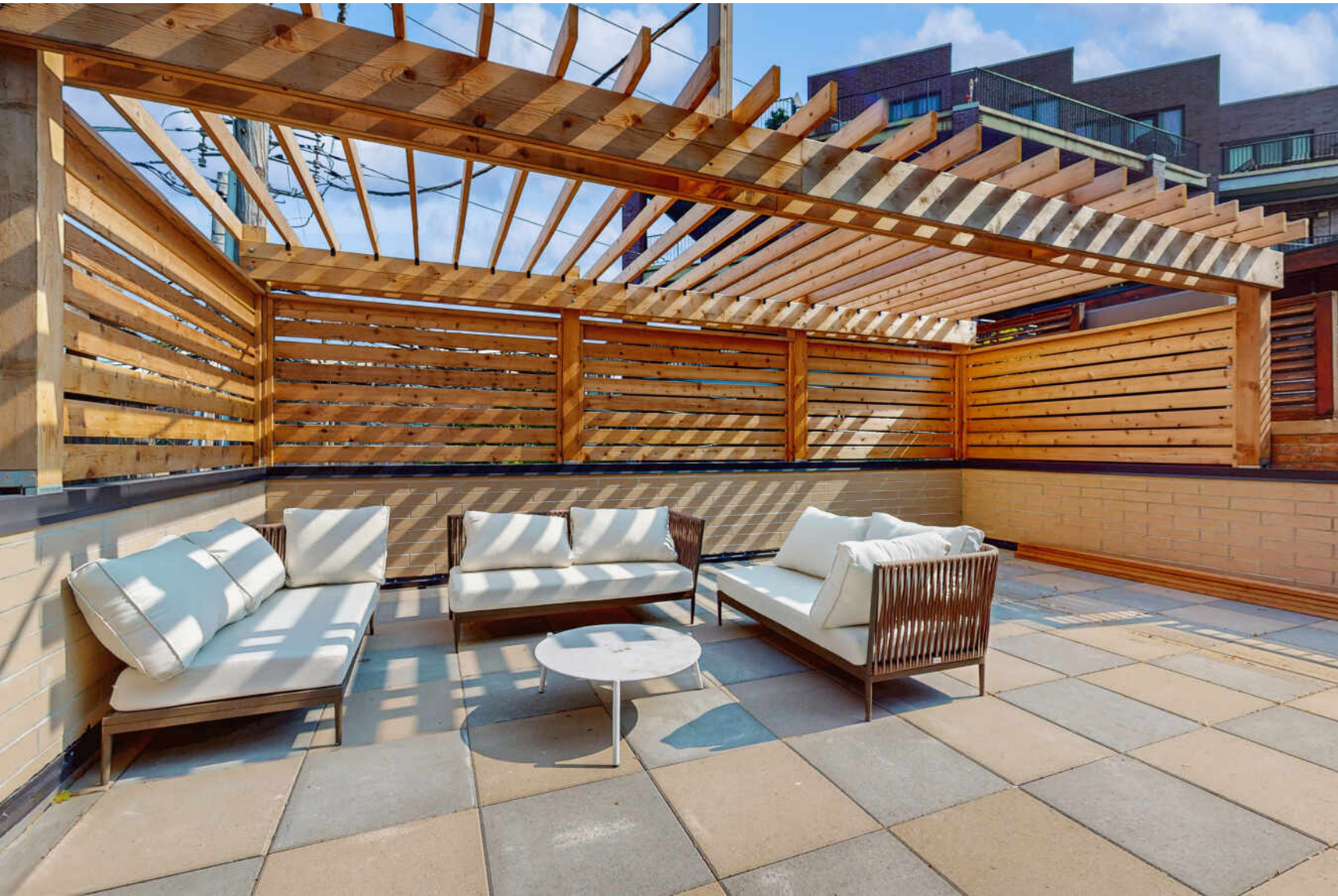
- LIVING ROOM : 28' × 15'
- DINING ROOM : 22' × 15'
- KITCHEN : 18' × 11'
- PRIMARY BEDROOM : 15' × 12'
- SECOND BEDROOM : 12' × 11'
- THIRD BEDROOM : 12' × 10'
- FOURTH BEDROOM : 11' × 10'

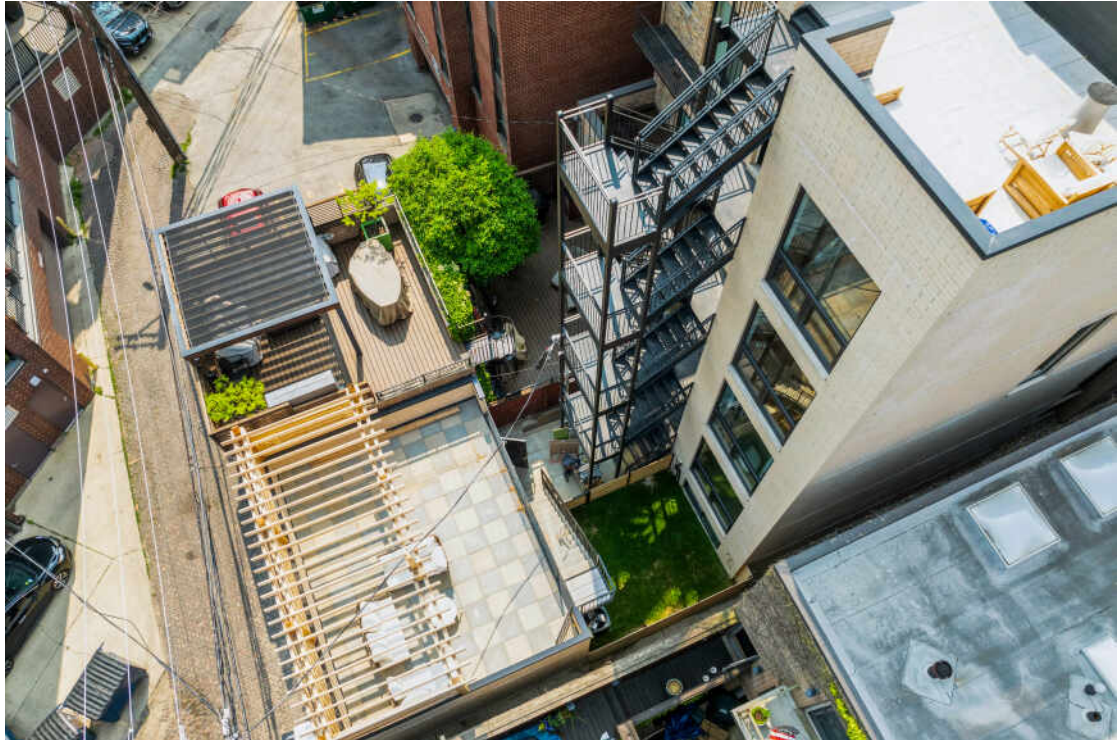
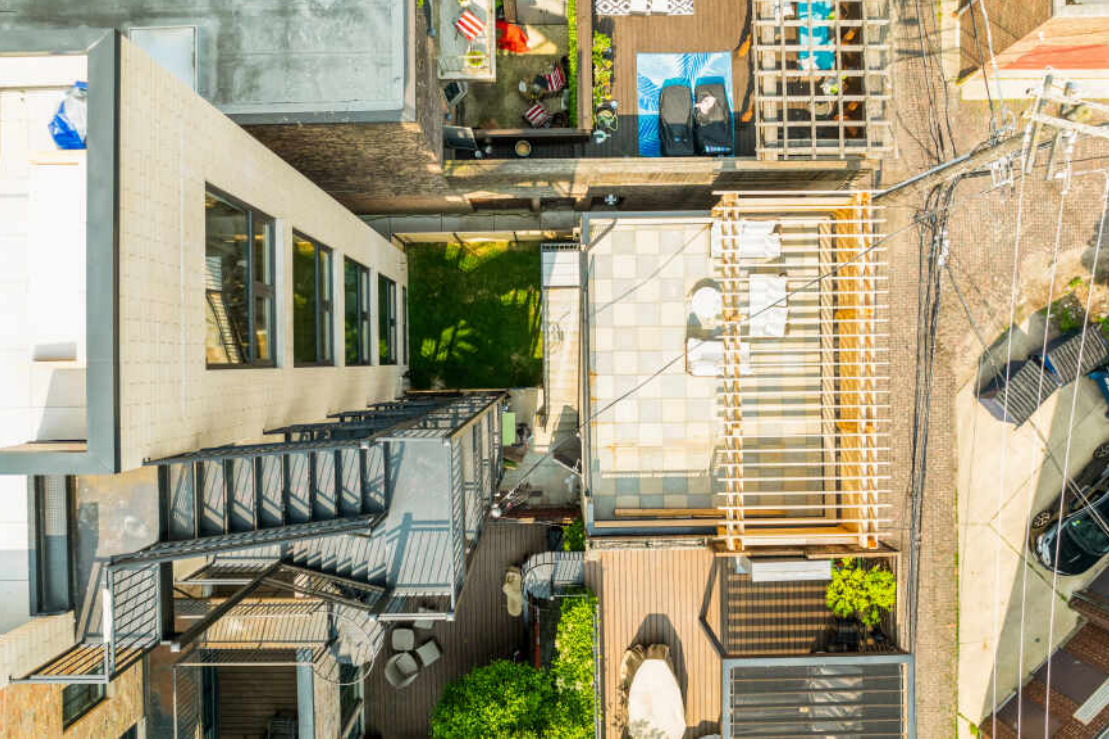
4 BEDROOM
3.1 BATH
ASSESSMENTS: \$250

Luxurious on every level and meticulous in every detail. Offering the grandeur of single family home living within an exquisite boutique residential 3-flat. Prime location ACROSS from OZ PARK in Lincoln Park, this New Construction spacious 4-bed, 3.5 bath duplex-down unit with COVETED OUTDOOR space has large aluminum windows throughout for great views and light. Features exceptional layouts & thoughtful design with 9' ceilings & hardwood floors. The main level of this unit lives like a single family home with a spacious living and dining spaces with fireplace, chef's kitchen, powder room, built-ins galore, all which lead out to a private yard, roof deck over garage, and large front balcony. The custom chef's kitchen features top-of-the-line 48" THERMADOR stove, FISHER PAYKAL panelized fridge, panelized dishwasher, custom MARFA cabinetry, & large island with breakfast bar. The lower level features radiant heated floors throughout, a master suite, 3 additional bedrooms with one having en-suite bathroom, & laundry room. The master suite has a spa-like bathroom with double vanity, heated floors, soaking tub, large shower, & separate water closet. Built to the highest standards with solid masonry construction (brick on all sides), high-end thermally broken aluminum windows, & sound dampening sub-floors. 1 garage parking spot included. Conveniently located near public transportation, restaurants, shops, schools, & in stellar Lincoln School district - This is a must see! This is one of many quality developments delivered by SHB Studio-built on a legacy of investing in communities by delivering unparalleled quality homes and customer service.

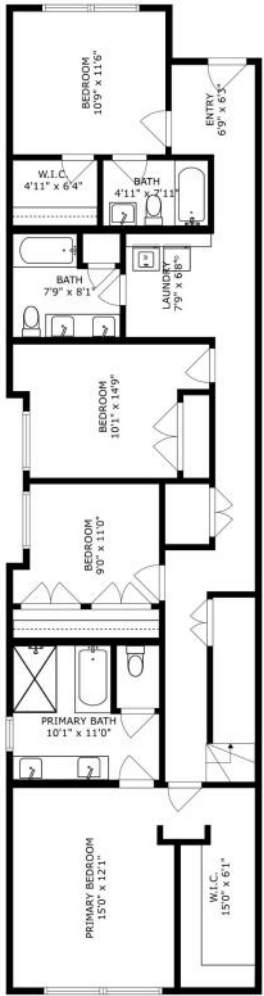






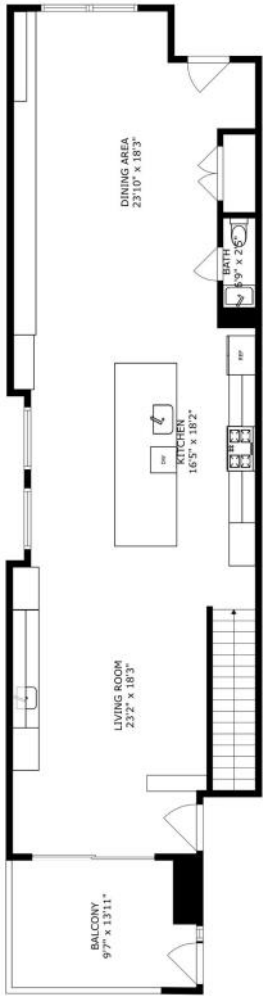


642 W Webster Ave, Unit 1, Chicago, IL



SIZES AND DIMENSIONS ARE APPROXIMATE, ACTUAL MAY VARY.

642 W Webster Ave, Unit 1, Chicago, IL



SIZES AND DIMENSIONS ARE APPROXIMATE, ACTUAL MAY VARY.



LINCOLN PARK RESIDENTS HAVE IT ALL – FROM THE ARTS TO ITS FAMED ZOO – RIGHT IN THEIR BACKYARD.

The neighborhood includes quiet tree-lined residential blocks, DePaul University, and two major museums in addition to the Lincoln Park Zoo, one of the country's oldest zoos. There's also a wide array of entertainment, eateries, and hotspots.

An evening in Lincoln Park might include seeing a play at the acclaimed Steppenwolf Theatre and dining at a Michelin-rated restaurant or a quaint neighborhood café. Sports fans will find as many dive bars with the game on as foodies will find fine-dining restaurants with al-fresco seating.

Lincoln Park is just as delightful by day. Residents are close to the lakefront and North Avenue Beach, parks, farmers markets, festivals, and countless shops, ranging from upscale boutiques on Armitage to larger retailers at the Clybourn Corridor.

Housing stock ranges from smaller townhomes and vintage condominiums to rehabs and new construction. Buyers around DePaul University can find loft condominiums in converted factories and warehouses. On its eastern edge, Lincoln Park features beautiful vintage brownstones along with high-rises with breathtaking views of the lake, park, North Pond Nature Sanctuary, and city skyline.

Located just two miles from downtown, Lincoln Park offers residents a quick commute to work. Public transportation abounds, with the CTA's Brown and Red lines serving the neighborhood in addition to several bus routes and Lake Shore Drive.



JESSE MCGRATH

(312) 545-2775

REALTOR, ARCHITECT

JMCGRATH@ATPROPERTIES.COM

WWW.MCGRATHARCHITECTS.COM



All specifications, features, designs, price, assessments, taxes and materials are subject to change without notice. Depicted floor plans and architectural renderings are only an artist's impression.

