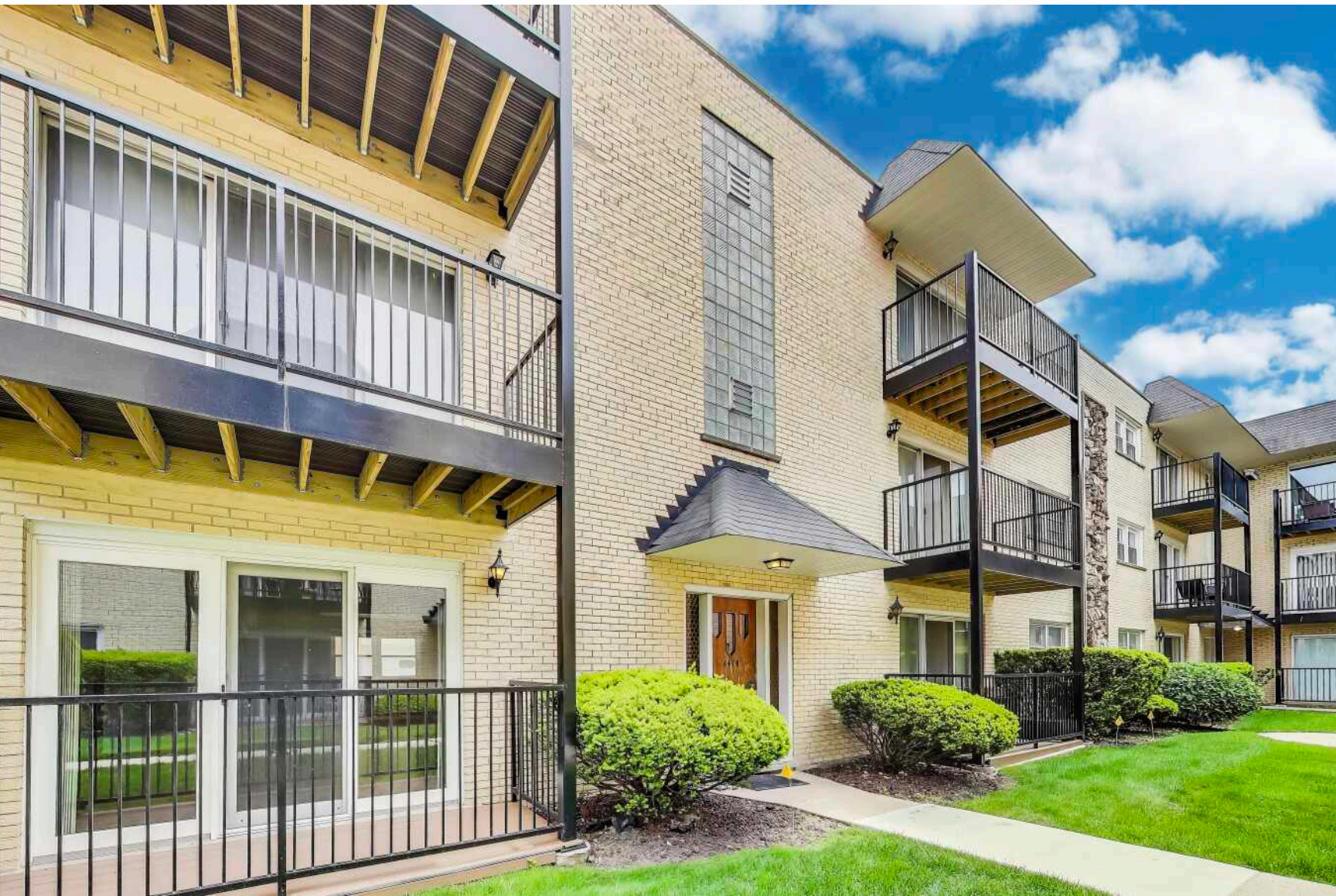


6478 N NORTHWEST HIGHWAY #1

EDISON PARK

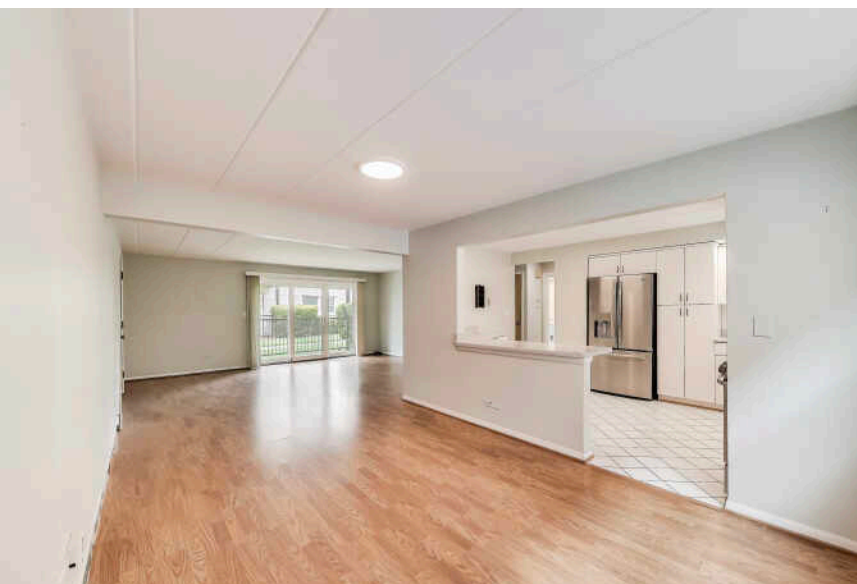
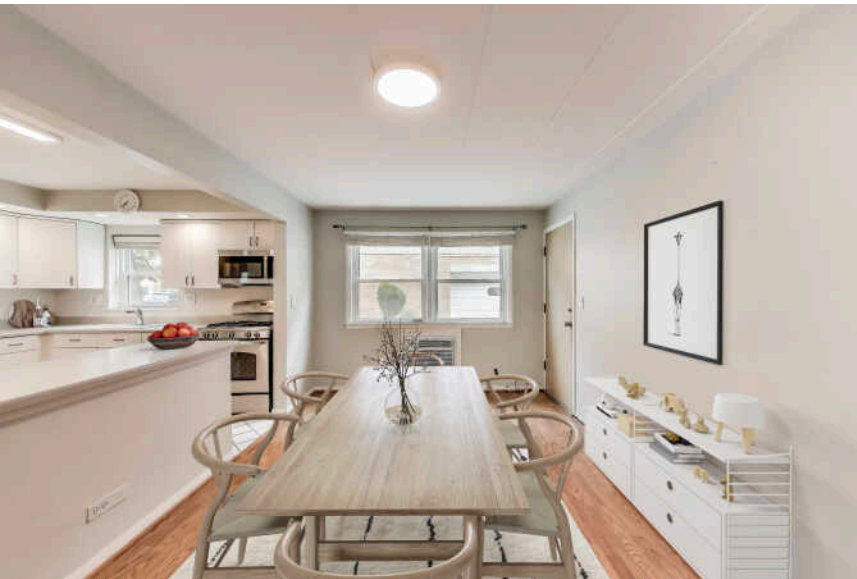


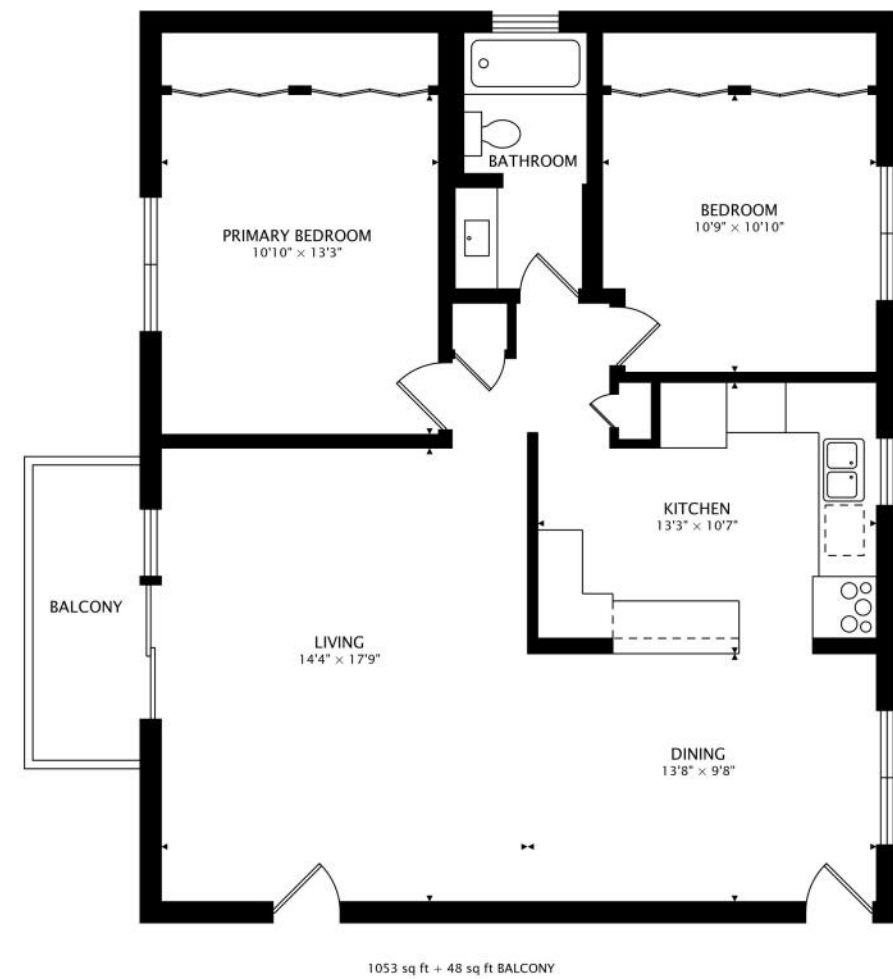
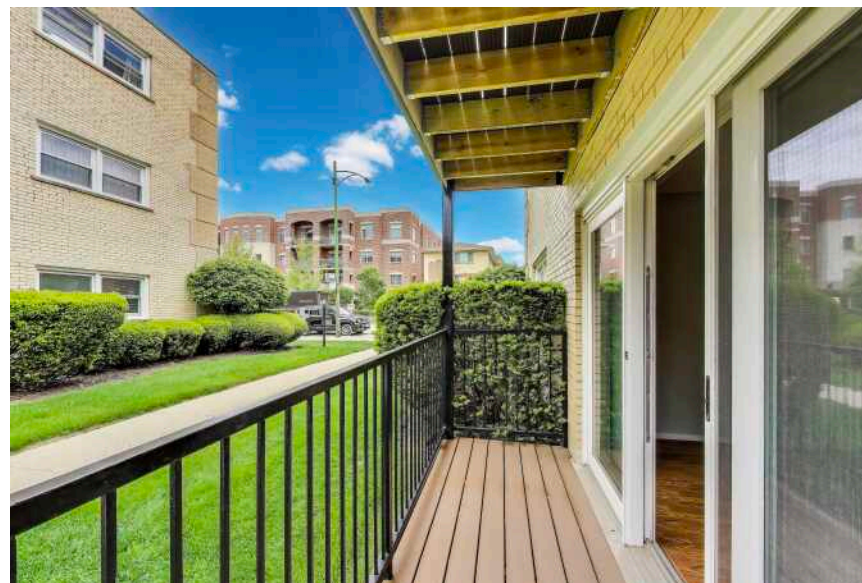
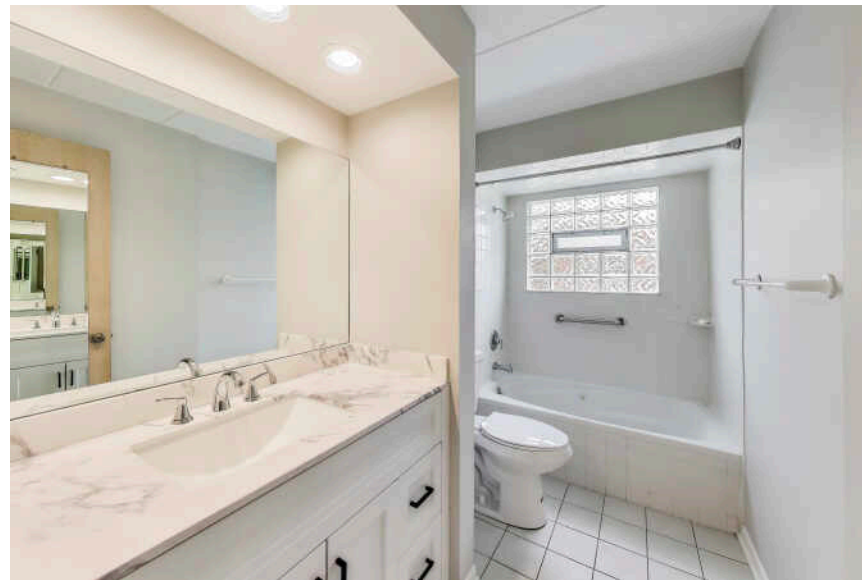


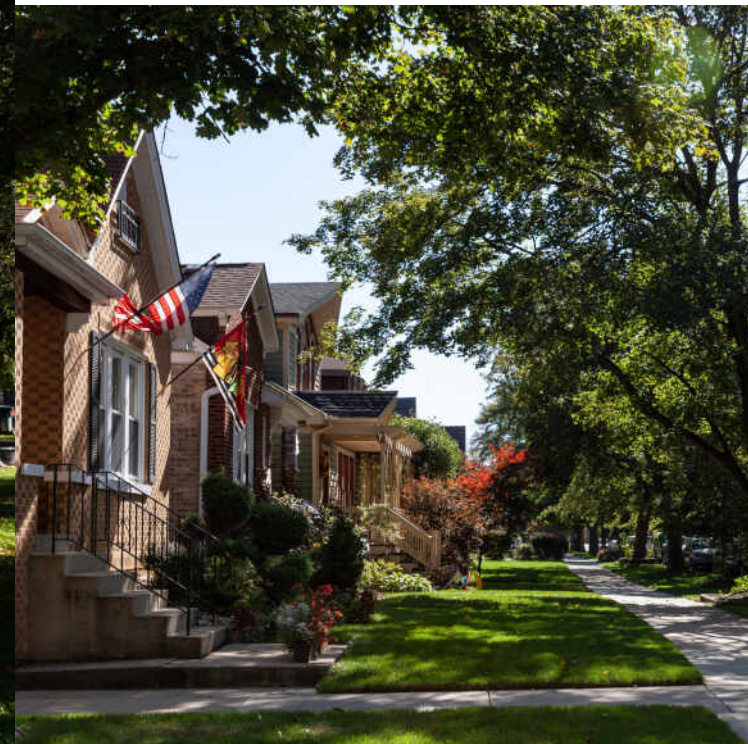
2 BEDROOM
1 BATH
TAXES: \$3,442
ASSESSMENTS: \$329 / MONTH

Prime Edison Park Location! This Bright First-Floor 2 Bed / 1 Bath Condo Features a Brand-New Courtyard Facing Trex Deck/Balcony to Enjoy Your Morning Coffee, Wood Laminate Flooring, Large Open Concept Living Room & Dining Room, A Kitchen w/ Stainless Steel Appliances (2019) Gas stove, & a Peninsula for Extra Seating. 2 Spacious Bedrooms w/ Wall to Wall Closets. Situated in the Heart of Edison Park, This Condo Offers Unbeatable Convenience. You'll be w/in Walking Distance to the Metra, as well as Edison Park's Vibrant Shopping, Dining, & Entertainment Options.

- Exterior Spot D Included
- Taxes = \$3,442 (No Exemptions)
- Reserves = \$29,505
- Assessment = \$329/mn (includes: Heat, Water, Garbage, Landscaping & Snow Removal)
- Gas Stove Radiant Floor Heating
- Dishwasher New Bathroom Vanity (2025)
- New Trex Deck
- Laundry & Storage Unit in Basement







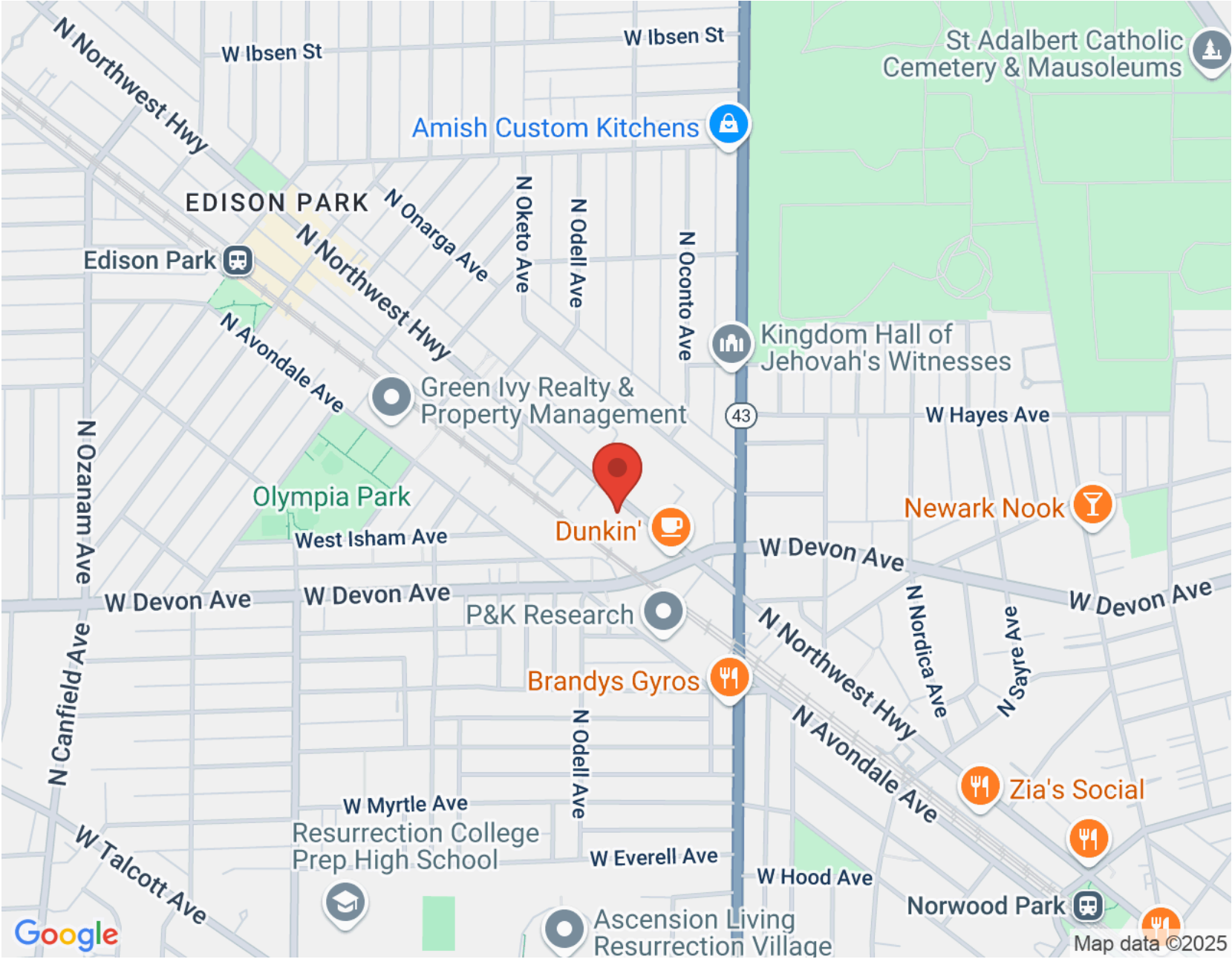
EDISON PARK IS A CLASSIC CHICAGO NEIGHBORHOOD, SITTING ON THE EDGE OF CITY AND SUBURBIA.

The charming community is just 15 miles from downtown Chicago and offers the quiet comforts of suburban living.

Located between the Des Plaines River and the Chicago River, Edison Park once served as a watershed divide and portage for early-day travelers. It was later named after the noteworthy American inventor, Thomas Edison.

Today, residents and visitors enjoy plenty of local shopping as well as the eateries and bakeries along the iconic Restaurant Row. Tree-lined streets and tidy bungalows add to the community's allure, along with four Chicago Park District parks. Located in the heart of its namesake community, Edison Park features a historic fieldhouse that serves as a community and arts center. The center offers a variety of art classes focused on mixed media, drawing, painting and ceramics. It is also the site of several social clubs.

Commuters can take a quick trip downtown on Edison Park's Metra line. They also have convenient access to CTA bus routes and "L" lines, major expressways and O'Hare International Airport.



NOTES _____



CRYSTAL MCCARTHY

(847) 338-6414

847-657-7000

CRYSTALMCCARTHY@ATPROPERTIES.COM



All specifications, features, designs, price, assessments, taxes and materials are subject to change without notice. Depicted floor plans and architectural renderings are only an artist's impression.

