

64 FONTAINE COURT

BLOOMINGDALE





ROOM DIMENSIONS

LIVING ROOM : 22' × 15'

FAMILY ROOM : 29' × 23'

DINING ROOM : 12' × 12'

KITCHEN : 13' × 11'

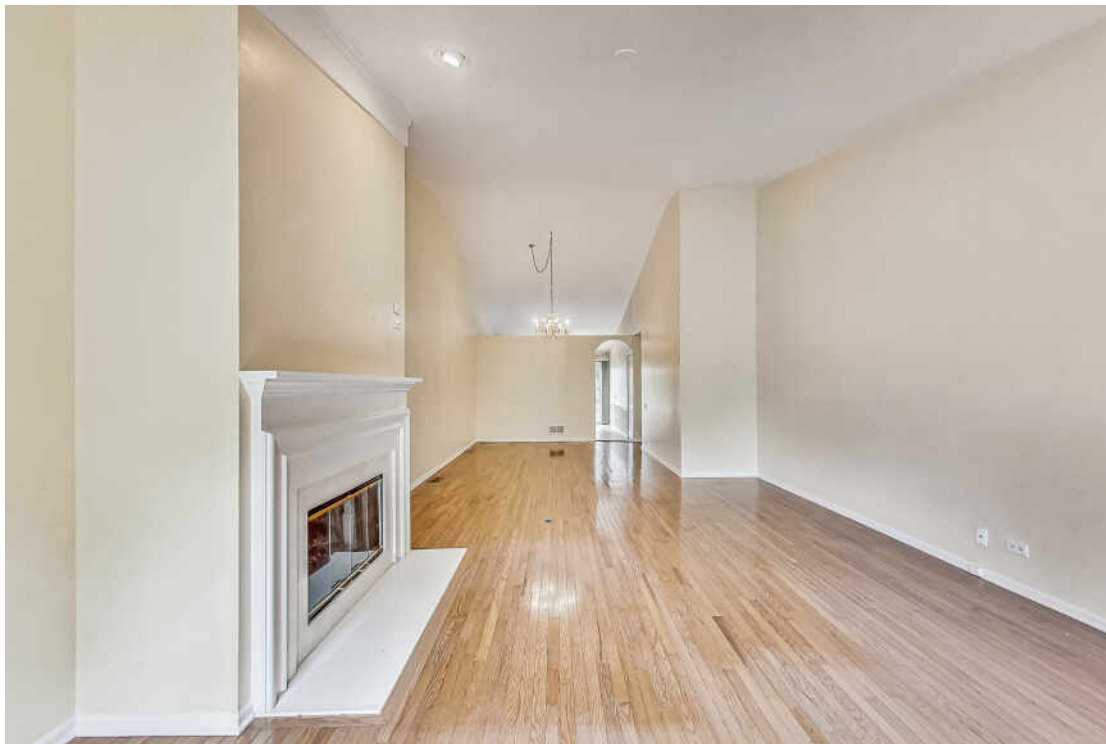
PRIMARY BEDROOM : 17' × 13'

SECOND BEDROOM : 12' × 10'

THIRD BEDROOM : 13' × 13'

THIS IS THE ONE

Live like you are on vacation! Chateau Lorraine is a highly sought-after neighborhood in Bloomingdale known for its charming and picturesque surroundings. This corner ranch townhouse offers a unique and desirable living experience. With its ranch-style design, this home provides a single-level living space plus the lower level which is the whole footprint of the home, making it perfect for those seeking convenience and accessibility. The open floor plan seamlessly connects the living room, dining area, and kitchen, creating a warm and welcoming atmosphere. The large windows throughout the townhouse flood the space with natural light, creating a bright and airy ambiance. The corner location provides privacy and tranquility, as it is nestled at the base of the cul de sac. The well-maintained landscaping and lush greenery surrounding the property add to the overall charm and appeal. The townhouse features 2 bedrooms plus 1 below grade, including a primary suite with an ensuite bathroom and ample closet space. The additional bedrooms are perfect for guests or can be used as a home office. Huge bonus - a private oversized deck, providing the perfect space for outdoor relaxation or hosting gatherings with amazing lake views and access to walking path. Make this your home today!

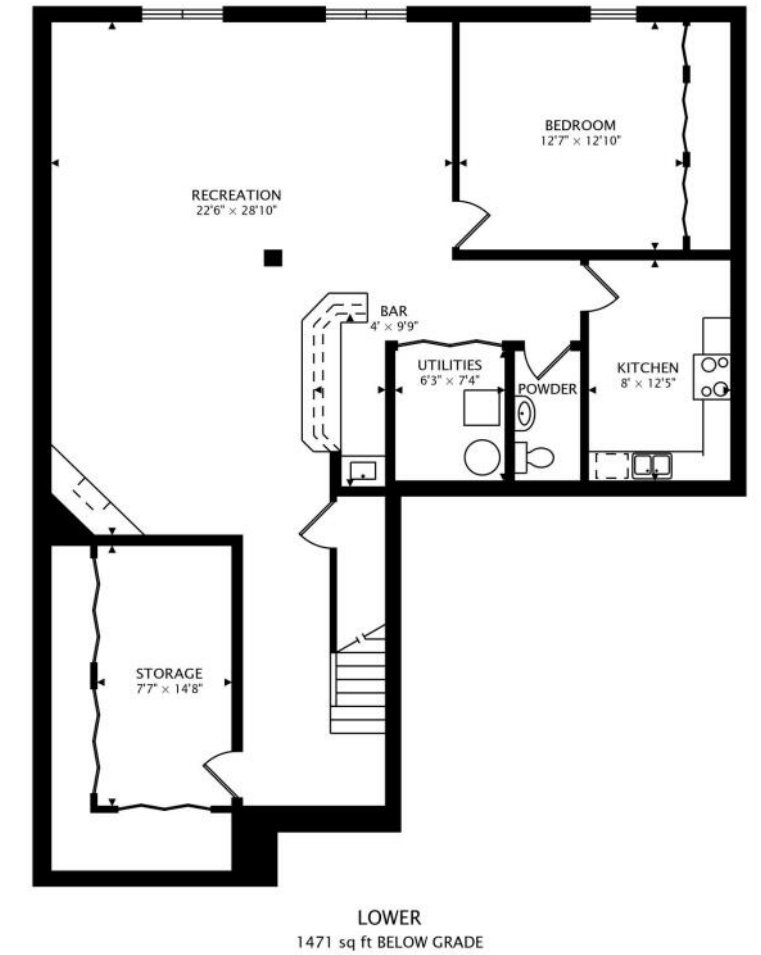
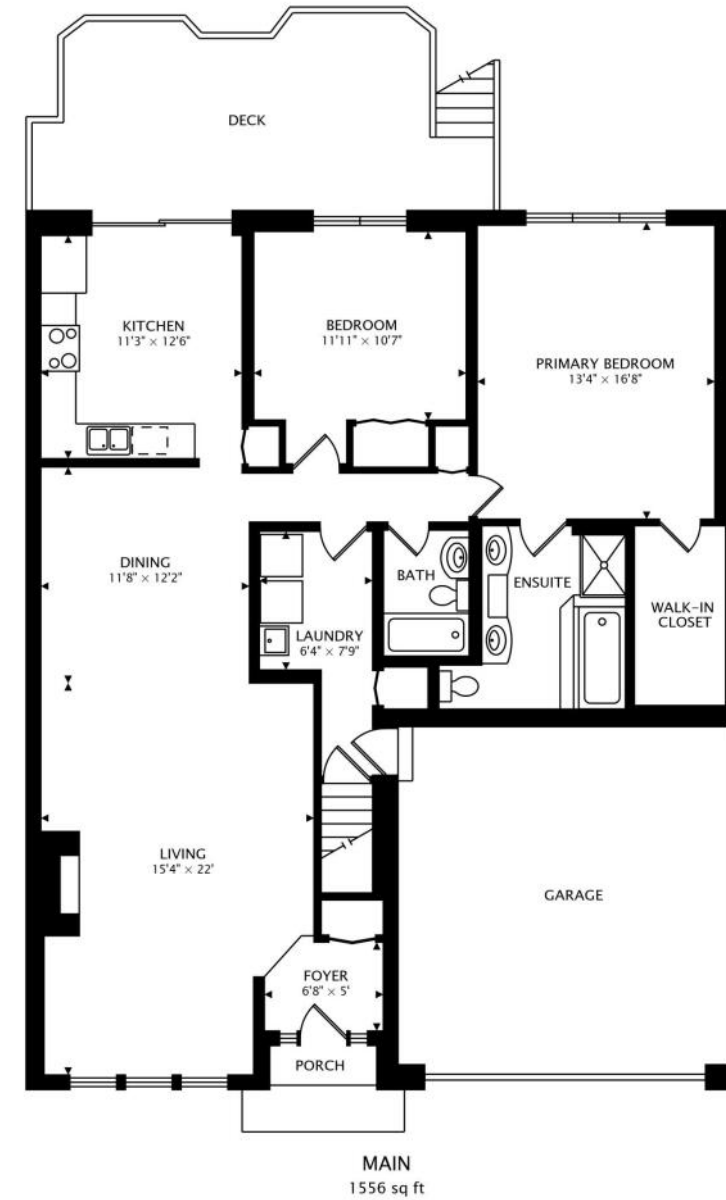


TAXES: \$7,065

ASSESSMENTS: \$357 / MONTH









LISA PASQUESI

(708) 288-2621

LISAPASQUESI@ATPROPERTIES.COM



CHRISTIE'S
INTERNATIONAL REAL ESTATE

All specifications, features, designs, price, assessments, taxes and materials are subject to change without notice. Depicted floor plans and architectural renderings are only an artist's impression.

