

651 W SHERIDAN ROAD #4D
LAKEVIEW





ROOM DIMENSIONS

LIVING ROOM : 18' × 17'

DINING ROOM : 15' × 8'

KITCHEN : 12' × 9'

PATIO : 16' × 7'

PRIMARY BEDROOM : 16' × 15'

WALK-IN CLOSET : 11' × 5'

SECOND BEDROOM : 17' × 10'

2 BEDROOM

2 BATH

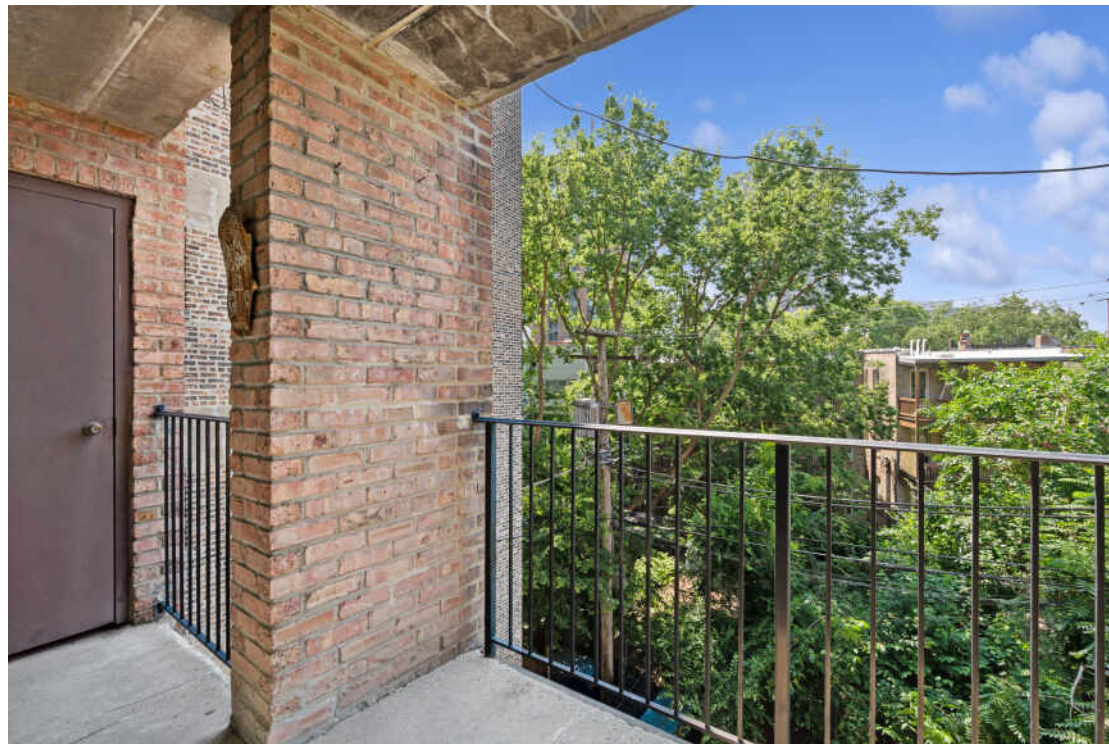
TAXES: \$1,680 WITH H/O AND SENIOR

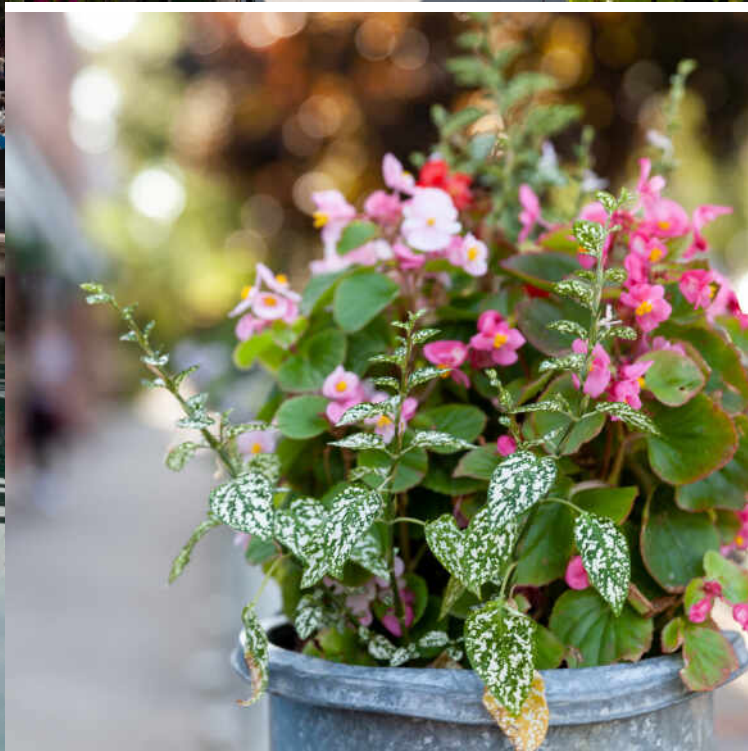
ASSESSMENTS: \$476

LAKEVIEW CONDO WITH EXPOSED BRICK WALLS

Welcome to this corner 2 Bed / 2 Bath Condo in Lakeview just steps from the lakefront. Tons of windows with southeast exposure fill the unit with natural light. The entire living room and dining room feature exposed brick walls adding warmth to the space, in addition to the wood-burning fireplace with hearth. The kitchen has recently been updated, with new stainless steel appliances, granite countertops, white cabinetry, tile flooring and a pantry for ample storage. Both bedrooms are large and will accommodate many different furniture layouts; the primary bedroom has a huge walk-in closet and attached bathroom while the second bedroom has floor to ceiling windows and sliding patio door. Recent updates include a new furnace and A/C (2025), and kitchen and bathroom remodels (2018). This is an incredibly solid building, with concrete floors between units and excellent soundproofing. The private balcony faces East and is great place to garden or grill. Additional perks include same-floor laundry, fabulous exterior parking (the best space in the lot), storage unit and bike room. This unbeatable location puts you steps away from express buses and the red line, walking distance to Wrigley Field, Boystown, restaurants and bars galore and Lake Michigan!







CHICAGOANS WILL FIND MORE THAN A FEW OF THEIR FAVORITE THINGS IN **LAKEVIEW**, ONE OF THE LARGEST NEIGHBORHOODS ON THE CITY’S NORTH SIDE.

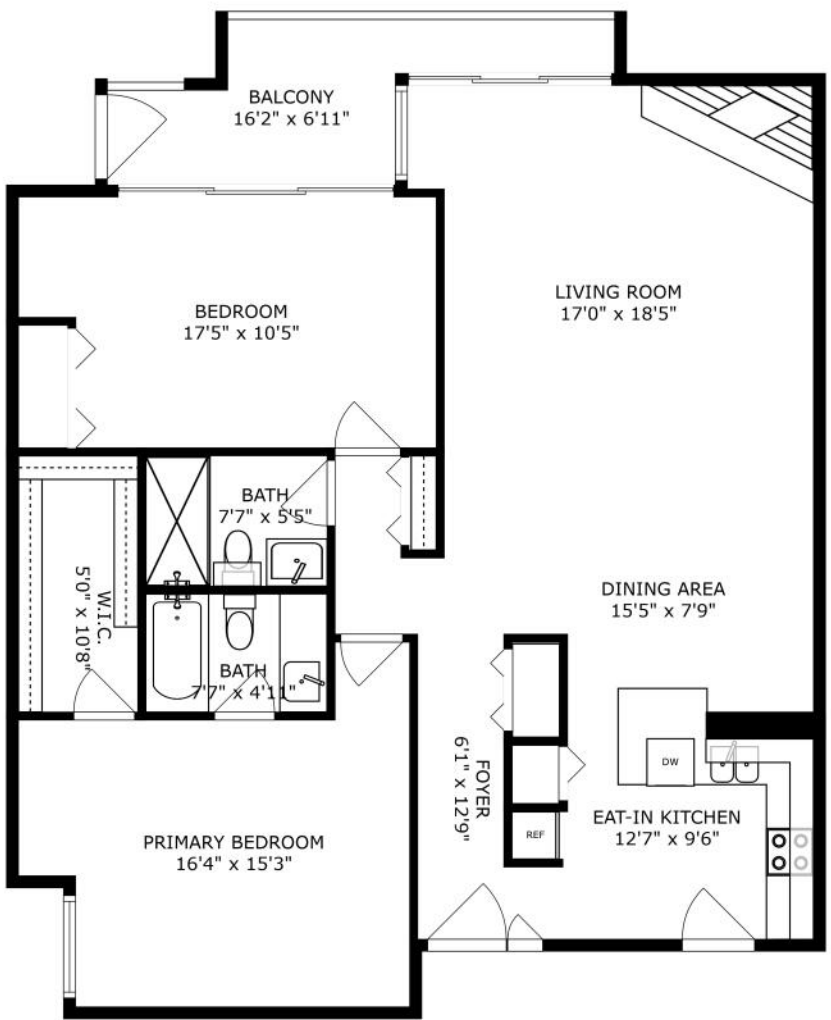
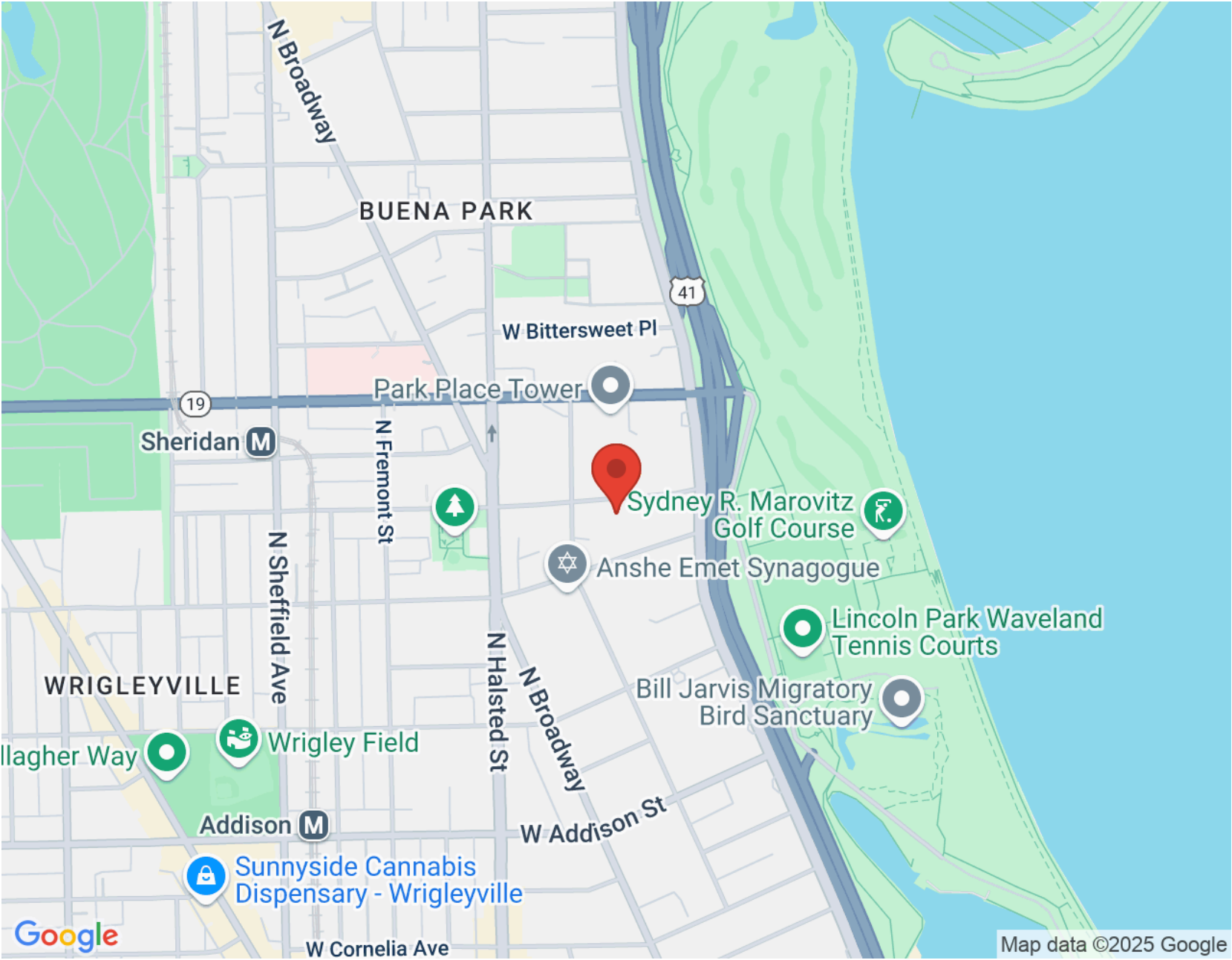
For starters, there’s Lakeview’s proximity to the beach and public transit, quiet residential streets, thriving restaurant and bar scene, and Wrigley Field.

Then there’s the neighborhood’s historic theaters and notable architecture. The Music Box Theater has been operating since it opened in 1929, originally showing silent films accompanied by a live organ player. It now plays independent and foreign films.

Did we mention the outdoor festivals, farmers markets, nightlife, and cultural attractions? Lakeview is home to the Belmont Theater District with over 30 theaters and live performance venues near the Belmont “L” station. Residents also have a front-row seat to the Chicago Marathon, Chicago Pride Parade, and Bike the Drive.

And we can’t forget shopping – shops on the Southport Corridor, independent businesses on Lincoln Avenue, and unique boutiques sprinkled throughout the neighborhood.

Lakeview includes a variety of housing styles and prices. Homes run the gamut from vintage walk-ups, condominiums, new construction three-flats, loft buildings, converted courtyard buildings, and high-rises. There are also a variety of single-family homes from stately mansions near Lincoln Park to contemporary new construction throughout the neighborhood.



SIZES AND DIMENSIONS ARE APPROXIMATE, ACTUAL MAY VARY.



OLIN EARGLE

REAL ESTATE ADVISOR

312-771-1328

OLIN@ATPROPERTIES.COM

WWW.OLINSELLSCHICAGO.COM

THE
OSC
TEAM



All specifications, features, designs, price, assessments, taxes and materials are subject to change without notice. Depicted floor plans and architectural renderings are only an artist's impression.

