

6520 SOUTH ELLIS AVENUE
WOODLAWN



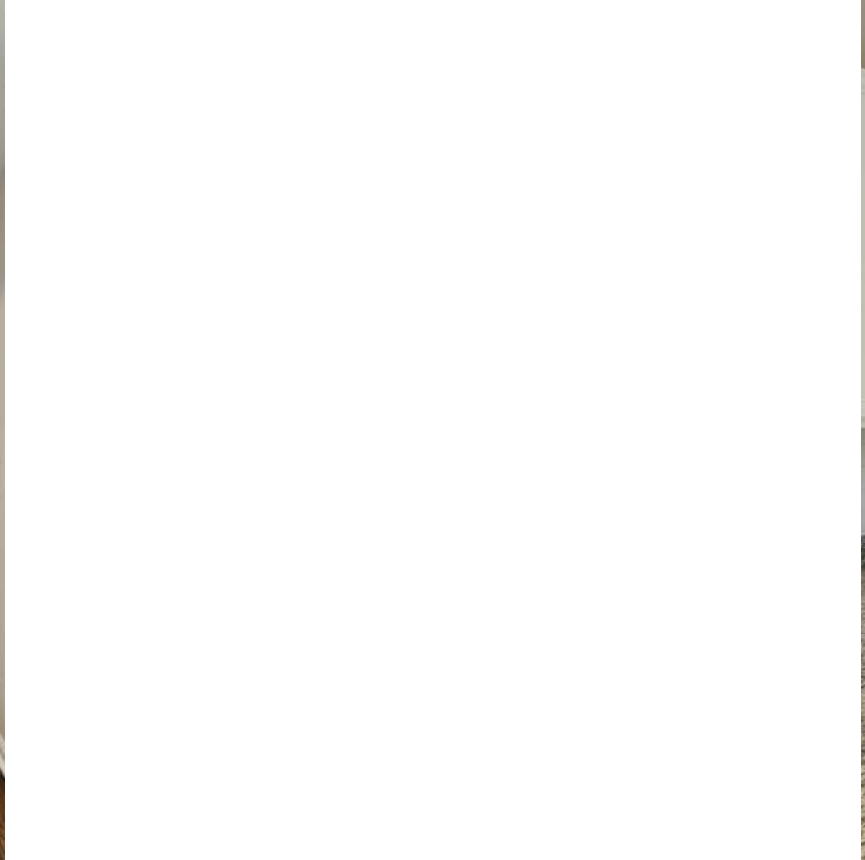


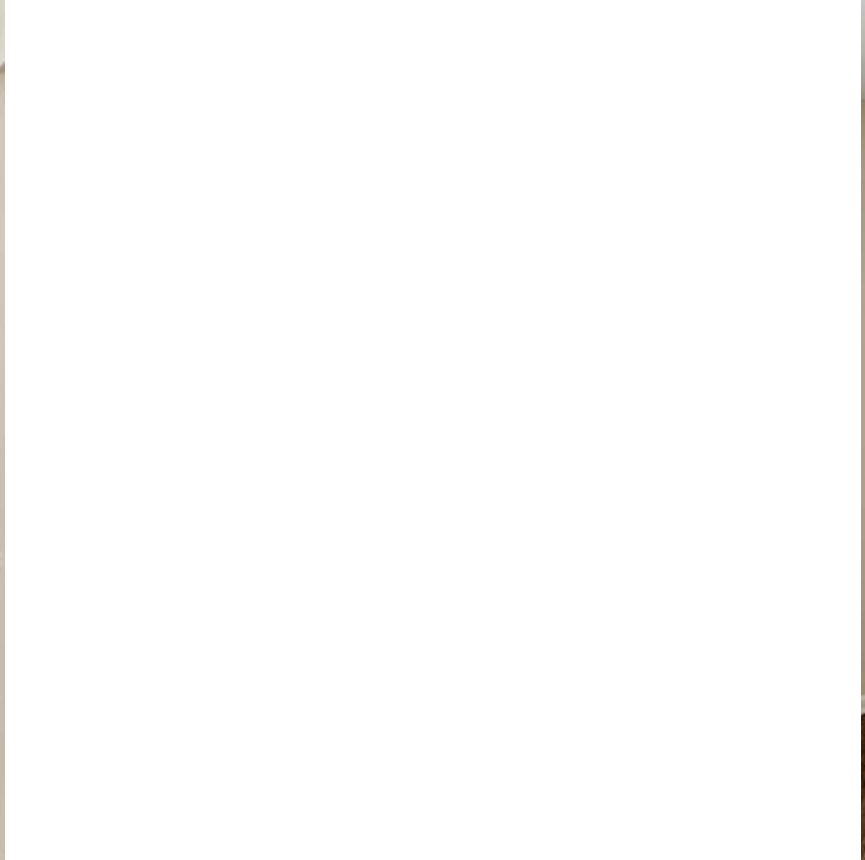
7 BEDROOM
3 BATH
TAXES: \$5,304

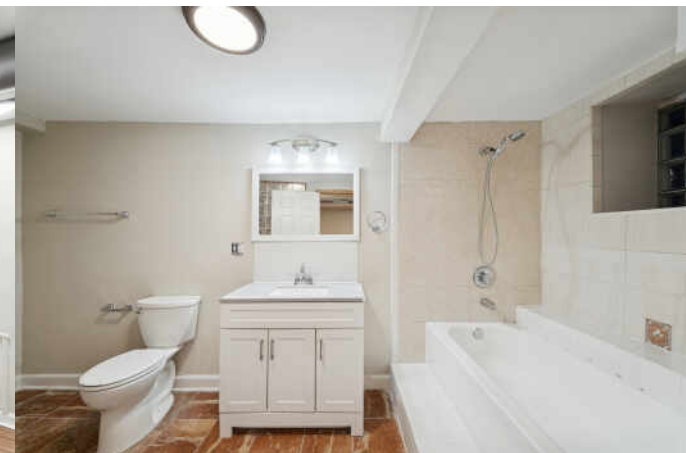
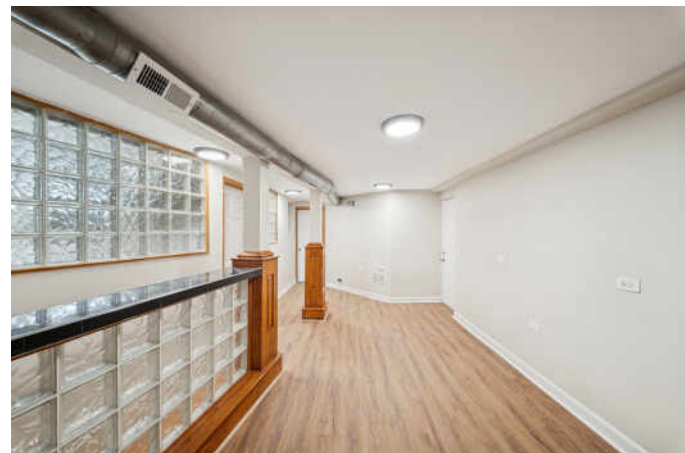
HELLO, WOODLAWN.

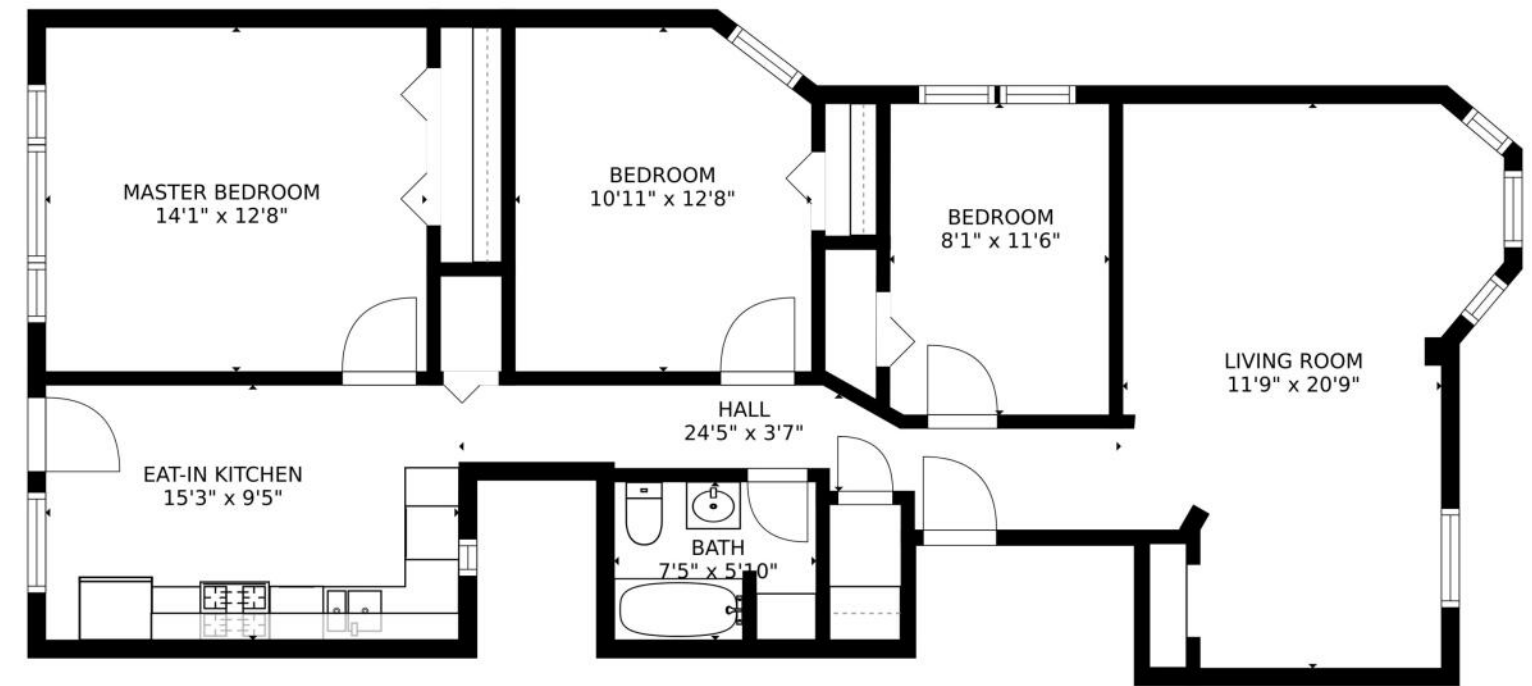
East Woodlawn two-unit property with all the updates, ready for you to move in. The first-floor unit is a spacious 4-bedroom, 2-bathroom duplex that includes garage parking and a laundry room. The second-floor unit features a 3-bedroom, 1-bathroom simplex, also with garage parking and laundry room. Both units have a bedroom that can easily accommodate a KING-sized bed, which is a rarity in traditional Chicago multifamily homes. Come take a tour!











SIZES AND DIMENSIONS ARE APPROXIMATE, ACTUAL MAY VARY.



NAJA MORRIS

(312) 206-4587

NAJA@NAJAMORRIS.COM



SIMONE MOORE

(708) 674-3088

SIMONEM@ATPROPERTIES.COM



All specifications, features, designs, price, assessments, taxes and materials are subject to change without notice. Depicted floor plans and architectural renderings are only an artist's impression.

