

652 S MIDDLETON AVE
HUNTING RIDGE - PALATINE





ROOM DIMENSIONS

LIVING ROOM : 26' × 21'

DINING ROOM : 12' × 13'

KITCHEN : 15' × 24'

PRIMARY BEDROOM : 16' × 19'

WALK IN CLOSET : 7' × 8'

2ND BEDROOM : 10' × 11'

3RD BEDROOM : 13' × 13'

4TH BEDROOM : 10' × 13'

WALK IN CLOSET : 5' × 4'

MUDROOM/LAUNDRY : 12' × 7'

SCREENED PORCH : 12' × 7'

FOYER : 8' × 8'

UNFINISHED BASEMENT : 24' × 38'

4 BEDROOM

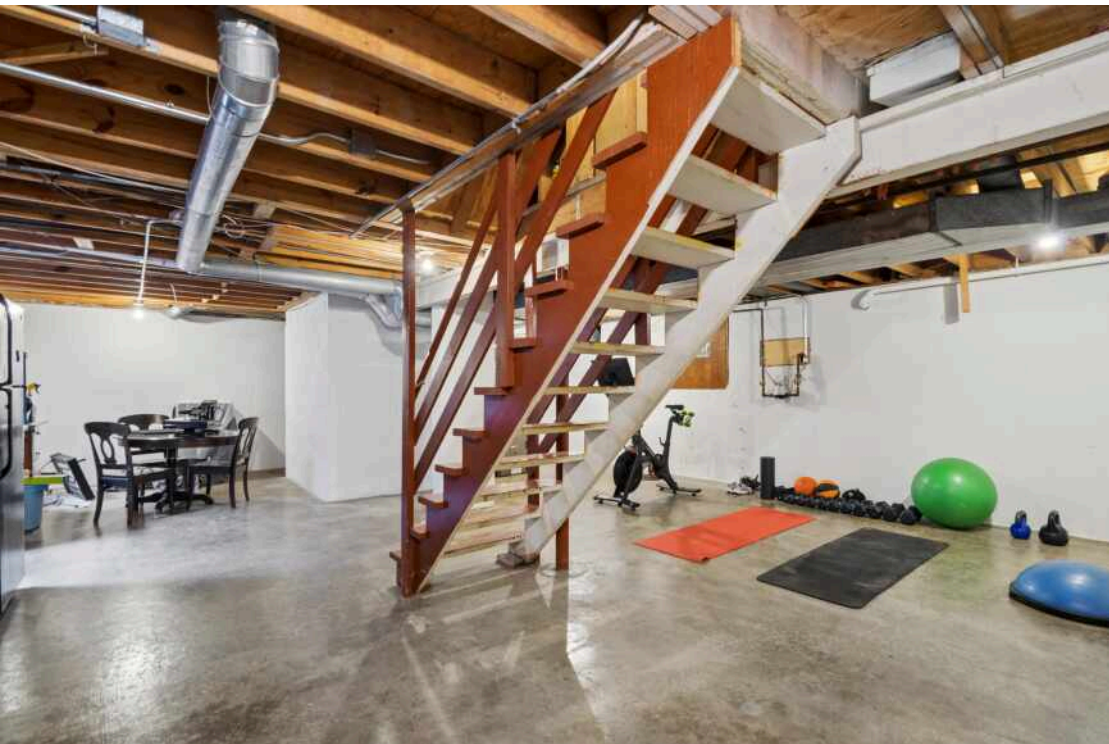
2.1 BATH

TAXES: \$11,818.30 (2024)

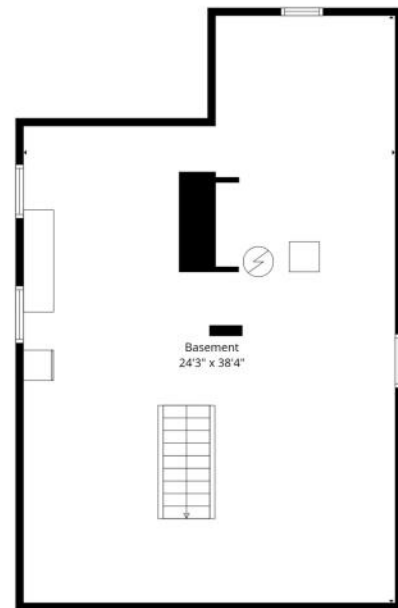
BEAUTIFUL MID-CENTURY RANCH IN COVETED HUNTING RIDGE

- Stunning brick and cedar mid-century ranch built in 1967, set on a beautiful corner lot of nearly 0.3 acres.
- Approximately 2,356 square feet of finished living space on one level, plus a partial unfinished basement offering excellent storage and future potential.
- The spacious single-level layout includes 4 bedrooms and 2.1 baths, all located on the main floor.
- The elegant formal foyer opens to an expansive living area with hardwood floors and a dramatic wall of southwest-facing windows, filling the space with natural light.
- Designed for everyday living as well as entertaining, the home features a separate formal dining room and large eat-in kitchen with antique white French Provincial cabinetry, granite counters, stainless steel appliances, and space for a full-sized table.
- The generous primary suite features a walk-in closet and en suite bath with double-bowl vanity, separate tub and shower.
- Functional everyday features include main-level laundry in the mudroom, attached 2-car garage, driveway parking for 3+ additional vehicles, screened porch, and fenced yard.
- This beautifully maintained, turnkey home offers updates throughout.
- Ideally located within walking distance of both Hunting Ridge Elementary and Fremd High School, with convenient access to parks, downtown Palatine, Schaumburg, Deer Park shopping, and Metra rail service.









Basement



1st Floor

Floor Plan Created By Cubicasa App. Measurements Deemed Highly Reliable But Not Guaranteed.





THE VILLAGE OF **PALATINE** HAS MASTERED THE ART OF BALANCE.

The growing community has a healthy mix of residents who enjoy its friendly suburban lifestyle and businesses that fuel the local economy.

The village embraces growth to support a wealth of amenities and services. The Palatine Park District has 28 parks, an 18-hole golf course, and a variety of classes from fitness and sports to arts and crafts. Palatine offers scenic views with winding trails, beautiful residential areas, and nearby Deer Grove Forest Preserve.

Palatine's downtown business district is both charming and self-sufficient for residents. Restaurants include a mix of local favorites from classic eateries to upscale breweries, as well as a variety of local bars. The village hosts several street festivals and a popular farmers market.

Commuters have access to the Chicago Loop with the Palatine Metra station and I-90. The nearby Chicago Executive Airport offers private and corporate aircraft services.



MISCELLANEOUS

- 1 Biscuits & Bows
1945 S PLUM GROVE RD, 1.3 MI
- 2 PetSmart
1440 E GOLF RD, 3.4 MI

RESTAURANTS

- 1 Pizza Bella
16 NORTH BROCKWAY STREET, 1.4 MI
- 2 Heng Wing Restaurant
121 WEST PALATINE ROAD, 1.4 MI
- 3 Mexico Uno
15 NORTH BROCKWAY STREET, 1.4 MI
- 4 Lou Malnati's Pizzeria
287 NORTH NORTHWEST HIGHWAY, 2.2 MI
- 5 Chicago Prime Steakhouse
1444 EAST ALGONQUIN ROAD, 2.4 MI

COFFEE

- 1 Starbucks Coffee Company
1200 ALGONQUIN ROAD, 1.1 MI
- 2 Dunkin'
1300 HICKS ROAD, 1.8 MI

SHOPPING

- 1 Palatine True Value
790 W EUCLID AVE, 0.7 MI
- 2 Walgreens
805 WEST EUCLID AVENUE, 0.9 MI
- 3 Costco Wholesale
1375 N MEACHAM RD #387B, 3.3 MI
- 4 Target
679 E DUNDEE RD, 3.4 MI
- 5 The Home Depot
825 E DUNDEE RD, 3.6 MI
- 6 Walmart
1555 N RAND RD, 3.8 MI

GROCERY

- 1 Jewel-Osco
45 S PLUM GROVE RD, 1.5 MI
- 2 Jewel-Osco Pharmacy
33 S PLUM GROVE RD, 1.5 MI
- 3 Mariano's
545 N HICKS RD, 2.4 MI
- 4 Trader Joe's
1426 E GOLF RD, 3.5 MI

SCHOOLS

- 1 Hunting Ridge Elementary School
1105 W ILLINOIS AVE, 0.2 MI
- 2 William Fremd High School
1000 S QUENTIN RD ROOM 200, 0.3 MI
- 3 Harper College
1200 ALGONQUIN RD, 1.2 MI
- 4 Plum Grove Middle School
2600 S PLUM GROVE RD, 1.6 MI

TRANSIT

- 1 Palatine
METRA - UNION PACIFIC NORTHWEST, 1.5 MI

PARKS

- 1 Sparrow Park
653 S MIDDLETON AVE, 0.1 MI
- 2 Mallard Park
731 S WHITE WILLOW BAY, 0.2 MI

SERVICES

- 1 Palatine Fire Department Station 84
220 WEST ILLINOIS AVENUE, 1.0 MI
- 2 United States Postal Service
440 WEST COLFAX STREET, 1.5 MI
- 3 Palatine Library District North Hoffman Branch
3600 LEXINGTON DR, 2.0 MI
- 4 Palatine Library District
700 N NORTH CT, 2.3 MI

NOTES



PHYLLIS STELLATO

GRI, ABR, BROKER

(312) 405-9305

PSTELLATO@ATPROPERTIES.COM

WWW.PHYLLIS.REALTOR

Phyllis Stellato
Residential Consultants

