

6530 S DREXEL AVENUE  
WOODLAWN







#### ROOM DIMENSIONS

LIVING ROOM : 12' × 16'

DINING ROOM : 12' × 16'

KITCHEN : 13' × 14'

FAMILY ROOM (MAIN LEVEL) : 19' × 13'

DECK : 9' × 15'

PRIMARY BEDROOM : 14' × 20'

WALK-IN CLOSET : 13' × 6'

PRIMARY BEDROOM DECK : 9' × 16'

2ND BEDROOM : 11' × 15'

3RD BEDROOM : 14' × 12'

4TH BEDROOM : 14' × 11'

LAUNDRY ROOM : 5' × 5'

FAMILY ROOM (BASEMENT) : 17' × 19'

OFFICE : 8' × 9'

STORAGE : 3' × 9'

4 BEDROOM

3.1 BATH

TAXES: \$1,008.97

## ANOTHER BEAUTIFULLY UPGRADED AND EXQUISITELY REDESIGNED RESIDENCE BY ARCHIC PROPERTIES

The superb quality and the meticulous attention to detail is like no other, in Woodlawn. The well proportioned rooms and office are optimal for working and staying at home. Nothing to do but move in and enjoy the elegance of this stunning abode.

- Open floor plan, 9' ceilings, premium grade oak hardwood flooring and recessed LED lighting throughout
- Crown molding on the first floor, 2nd floor hallway and primary bedroom
- Elegant Chef's Kitchen with quartz counters, soft close cabinets and drawers, under cabinet lighting, waterfall island, Bosch stainless steel appliances, and expansive pantry
- Main level family room with custom fireplace wall, electric fireplace, and upgraded sliding glass door leading out to a spacious deck
- Serene primary bedroom with a luxurious en-suite bathroom with an impressive spa style shower, double vanity with center make-up area, custom walk-in closet with skylight, and a private over-sized deck
- Basement level with blown in foam insulation for energy efficiency, 2nd family room with wet bar and wine fridge
- Office with ample storage space
- Two Rheem high efficiency furnaces and cooling systems, 75 gallon hot water heater, 2nd floor laundry room with LG wi-fi enabled washer and dryer, and utility sink
- New windows, doors, flooring, electric, plumbing, roof, water service, side concrete walkway, fence, garage, and professional landscaping





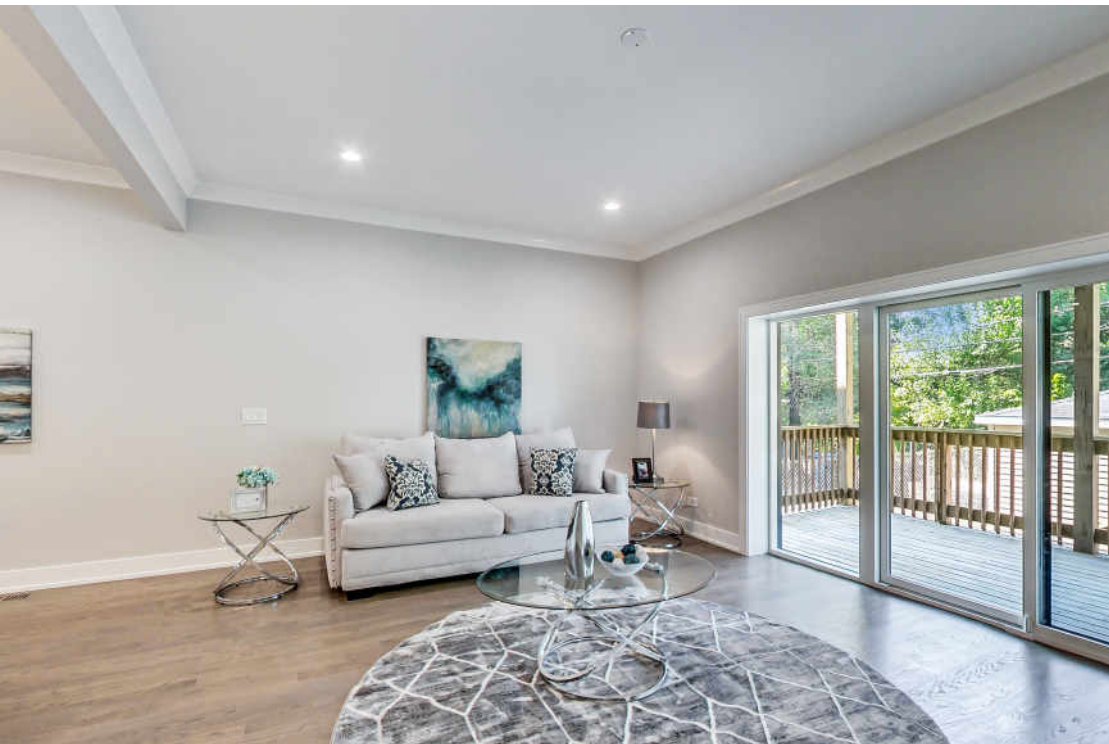




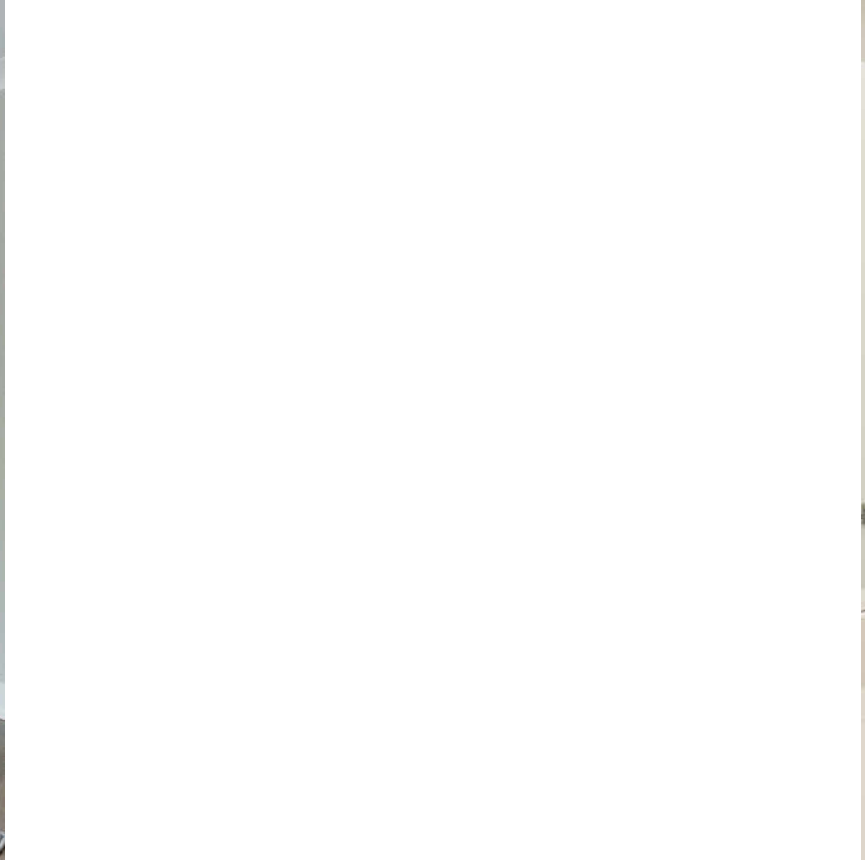




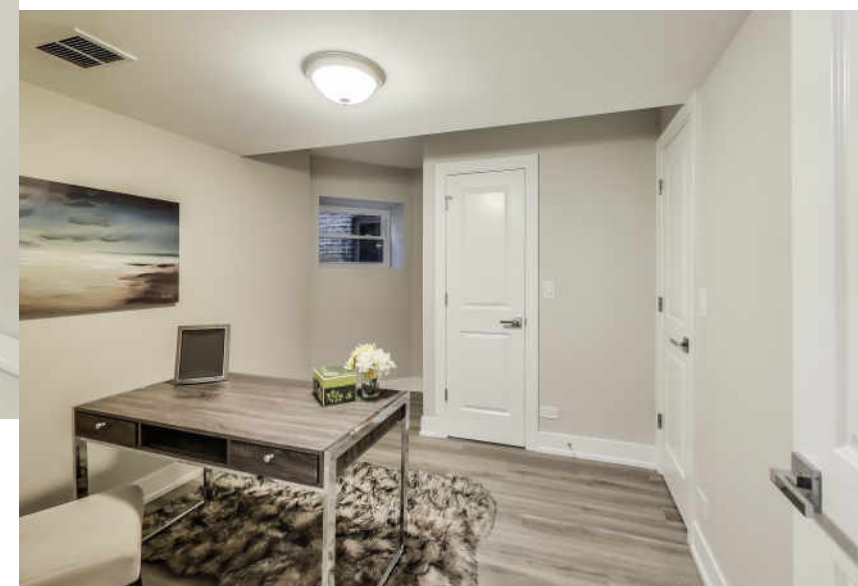
















## GLYNNIS JOHNSON

(312) 446-6239

GJOHNSON@ATPROPERTIES.COM



## MOE LEE

(773) 876-9636

MLEE@ATPROPERTIES.COM



**THE MOE GROUP**

@myrealtormoe

**@properties®**

**6530SDREXEL.INFO**