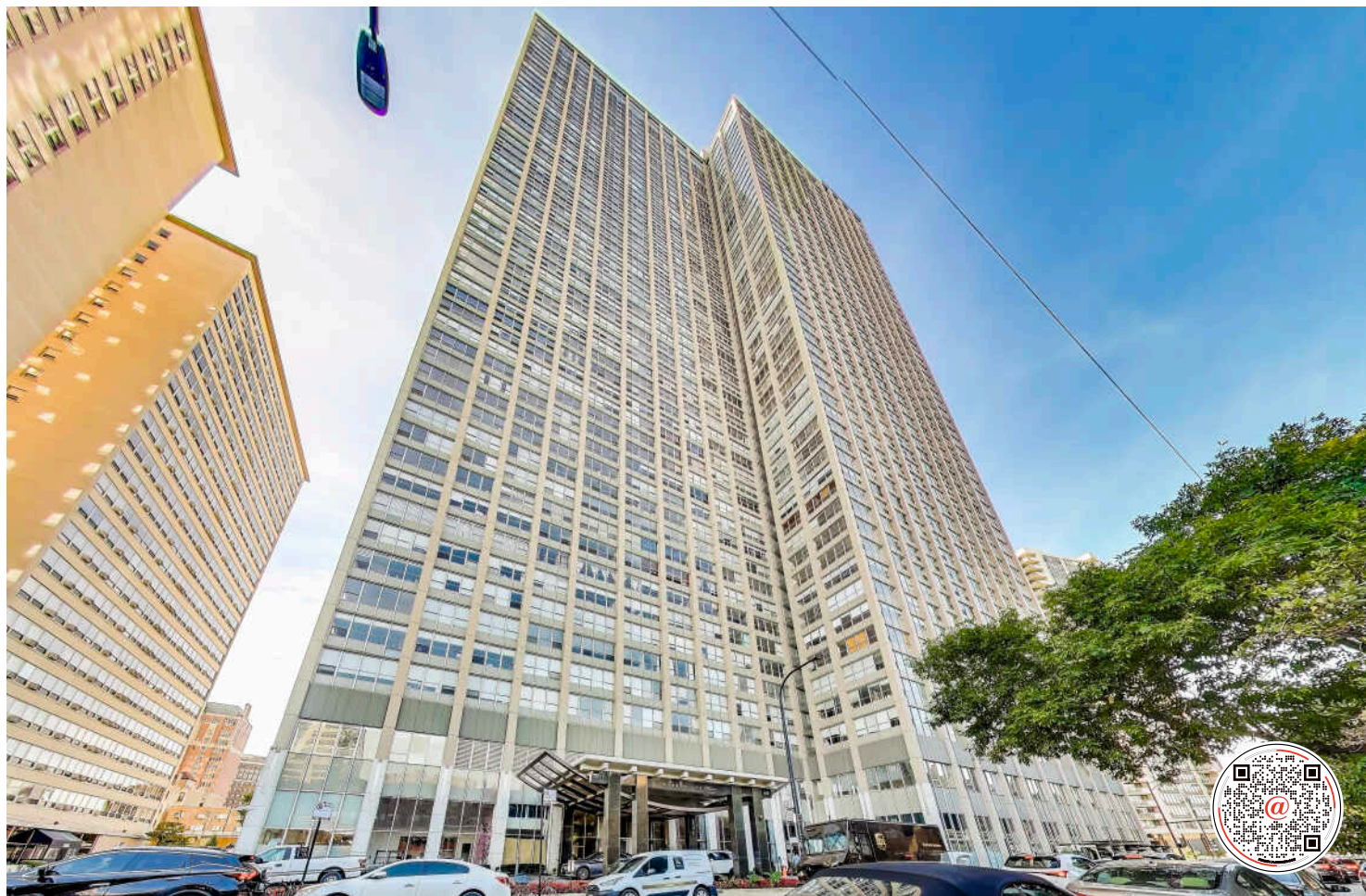
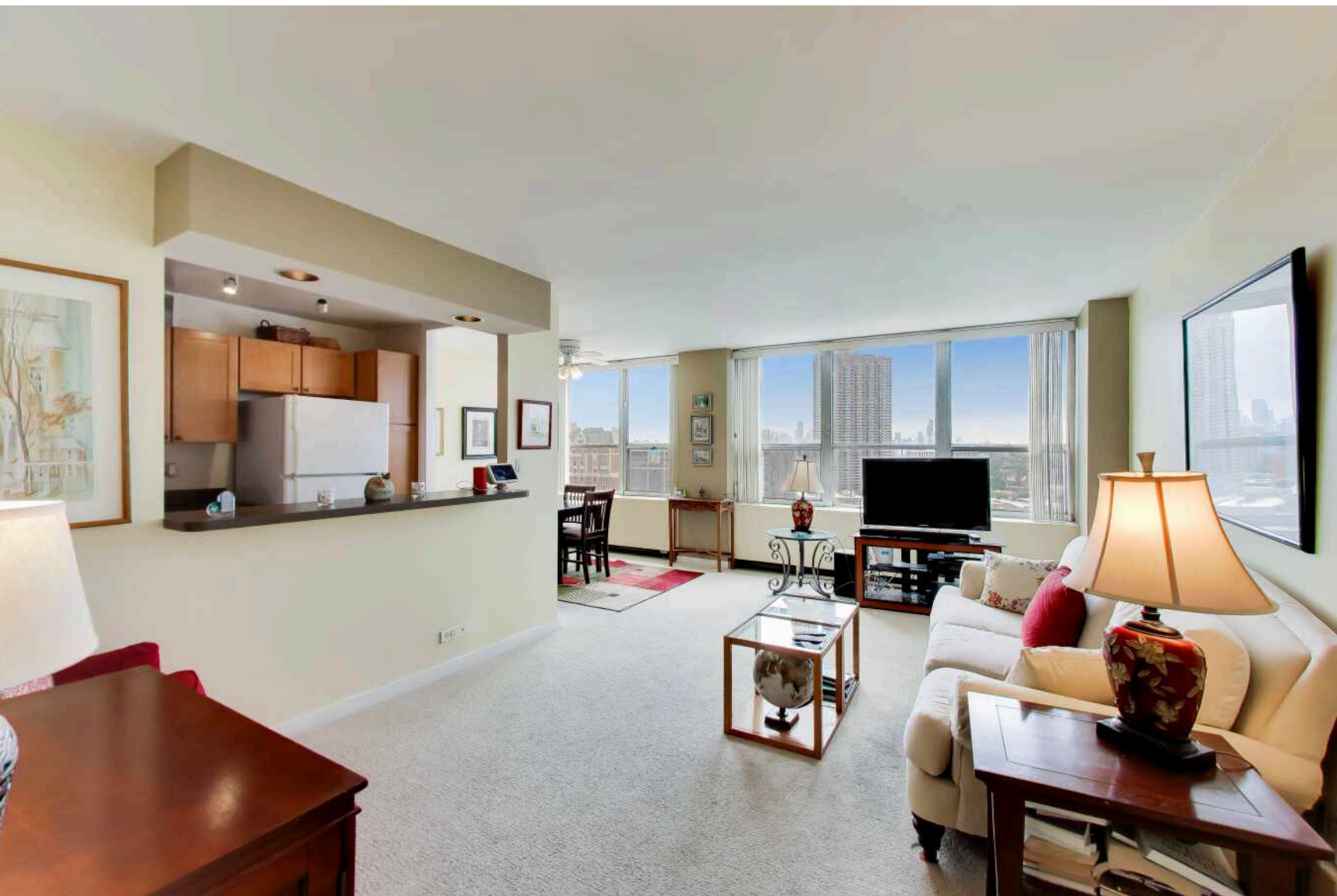


655 W. IRVING PARK #1915

LAKEVIEW





ROOM DIMENSIONS

LIVING ROOM : 18' × 12'

DINING ROOM : 8' × 8'

KITCHEN : 10' × 7'

BEDROOM : 15' × 11'

FOYER : 8' × 4'

WELCOME TO RESORT LIVING AT PARK PLACE!

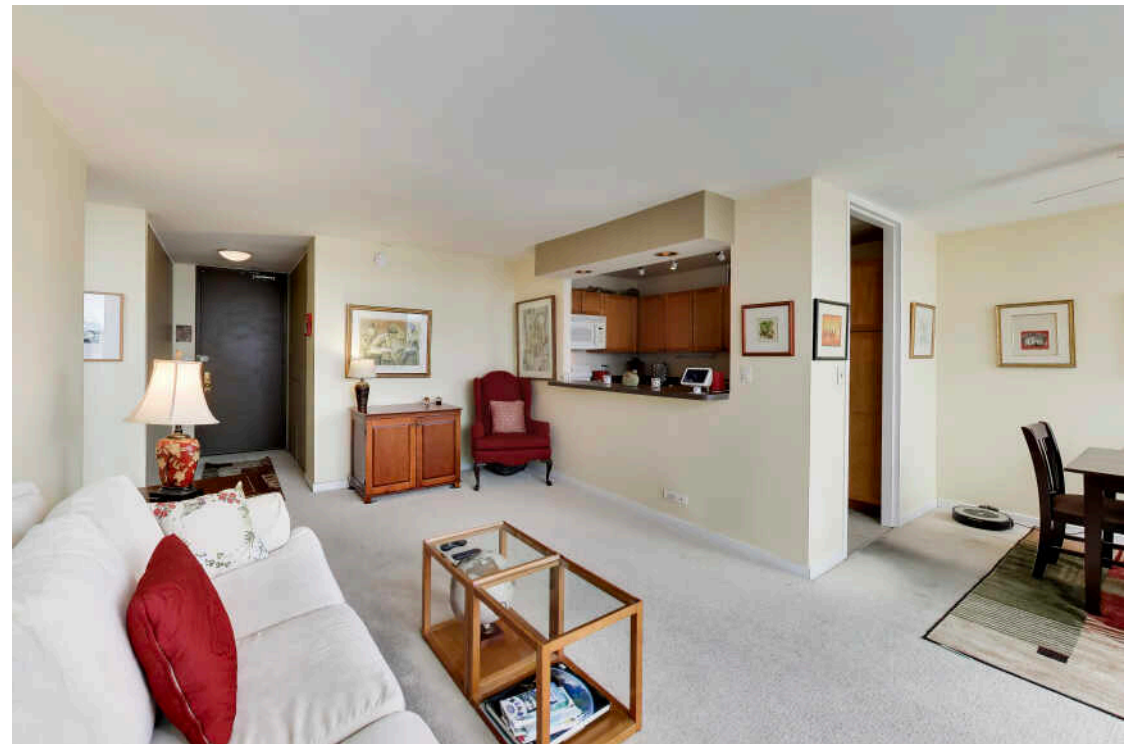
This extremely bright south facing high floor home features incredible skyline/city views with peeks of the lake and Wrigley Field from all windows. This spacious 762 sq ft one bedroom (NOT Jr-1BR) boasts a separate dining area, an open kitchen with breakfast bar and great closet space. The large bedroom can easily accommodate a king-sized bedroom set. The bathroom is nicely appointed with and upgraded vanity and fixtures. This coveted full amenity building offers resort-style living with an expansive pool, sun deck, cabanas, grill area & tables, basketball court, dog run, yoga studios, sauna, and a fitness center. Enjoy the convenience of 24-hour door staff/management, on-site grocery market, dry cleaners, business center, bike storage, and even a private movie theater. Multiple garage parking spaces available for purchase for an additional \$20K-\$25K or for rent. Phenomenal location that's steps to The Lakefront, Montrose Beach, Wrigley Field, dining, shops, nightlife, CTA express buses and Red Line El. Investor friendly.

1 BEDROOM

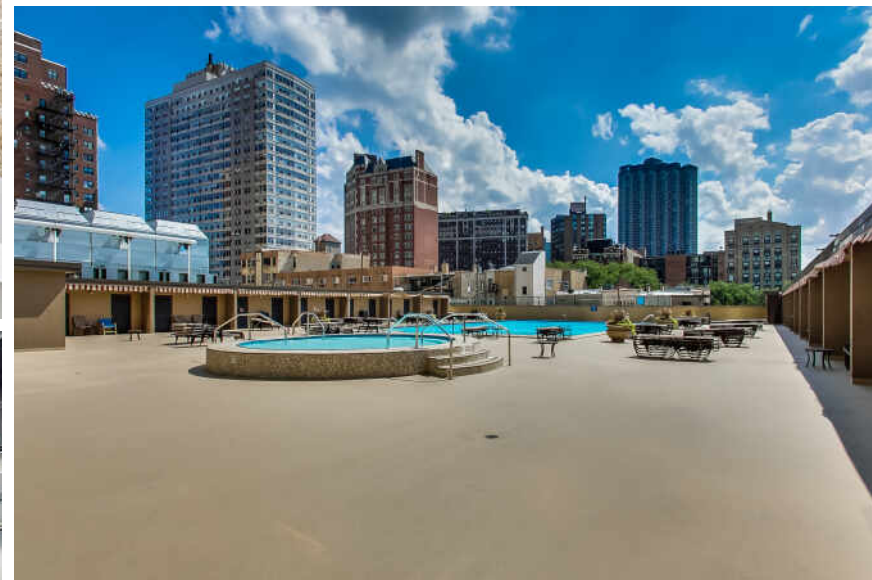
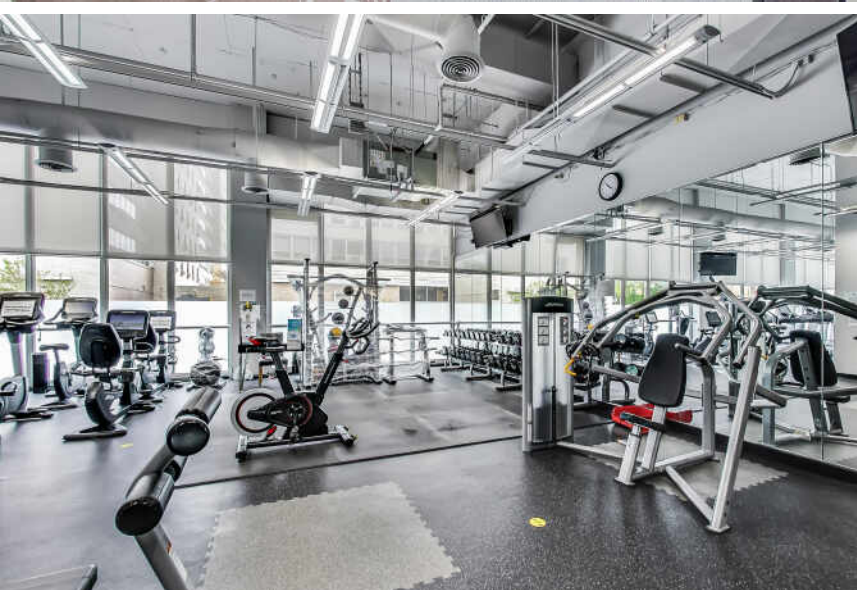
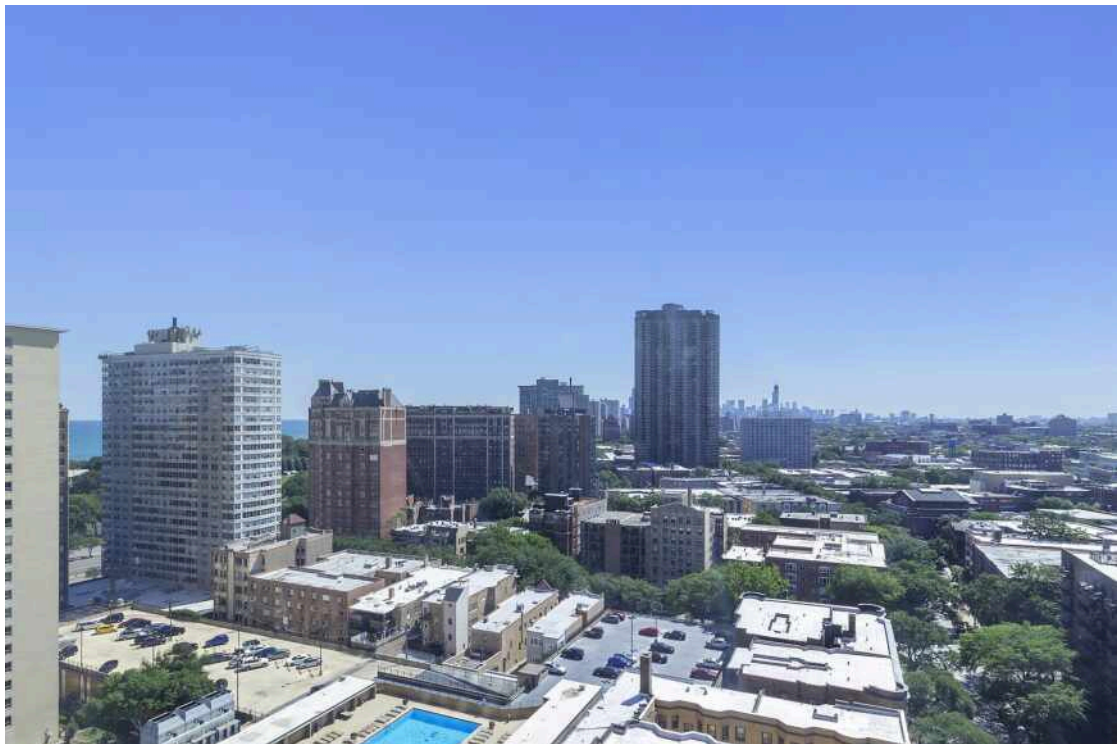
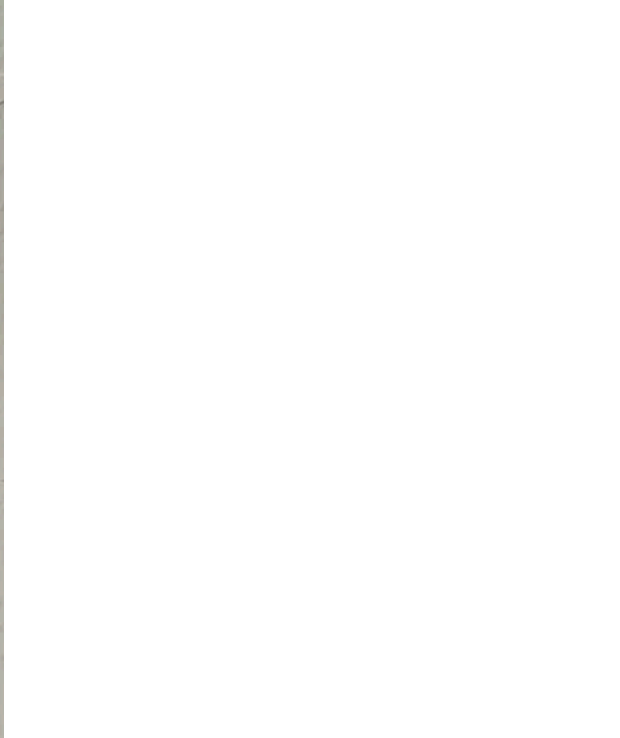
1 BATH

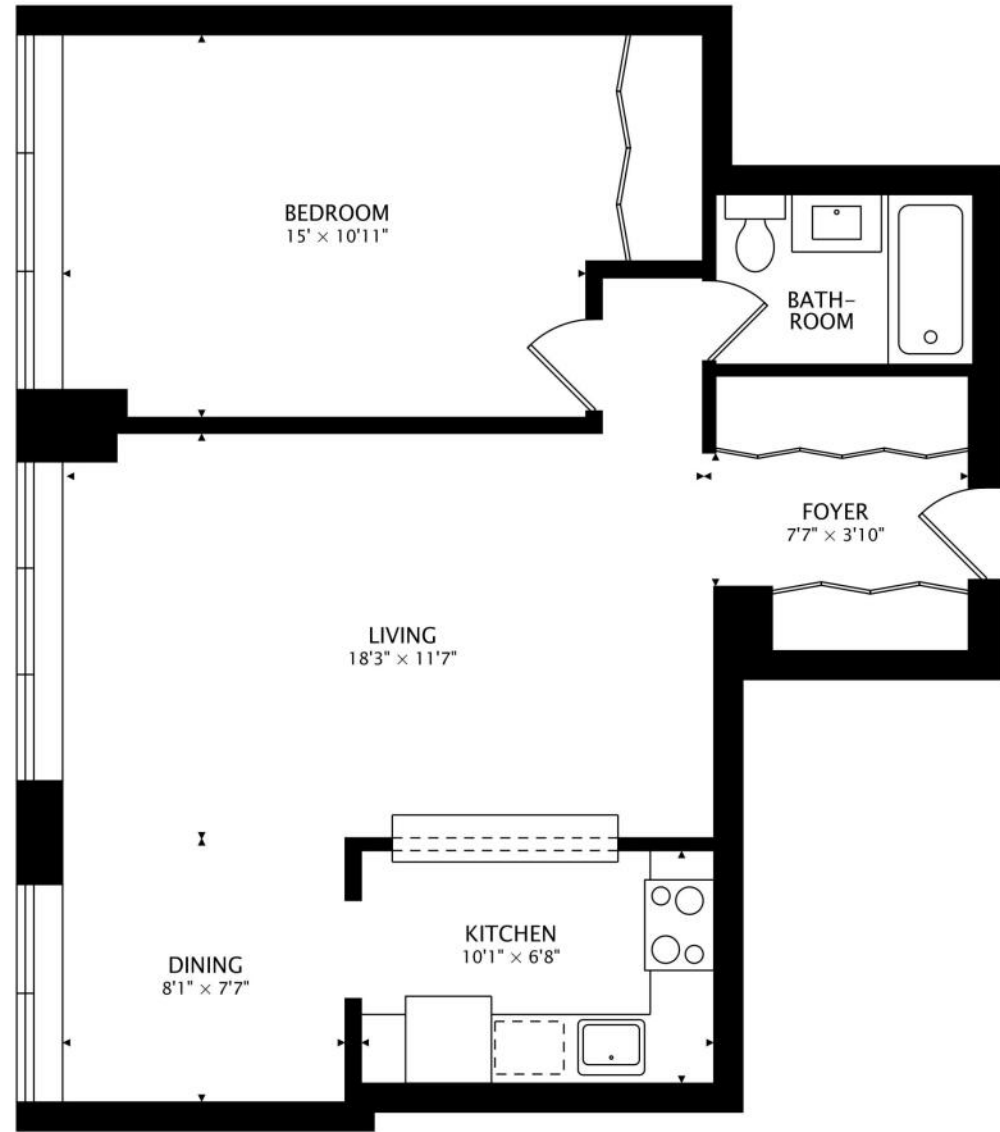
TAXES: \$2,834.15

ASSESSMENTS: \$753

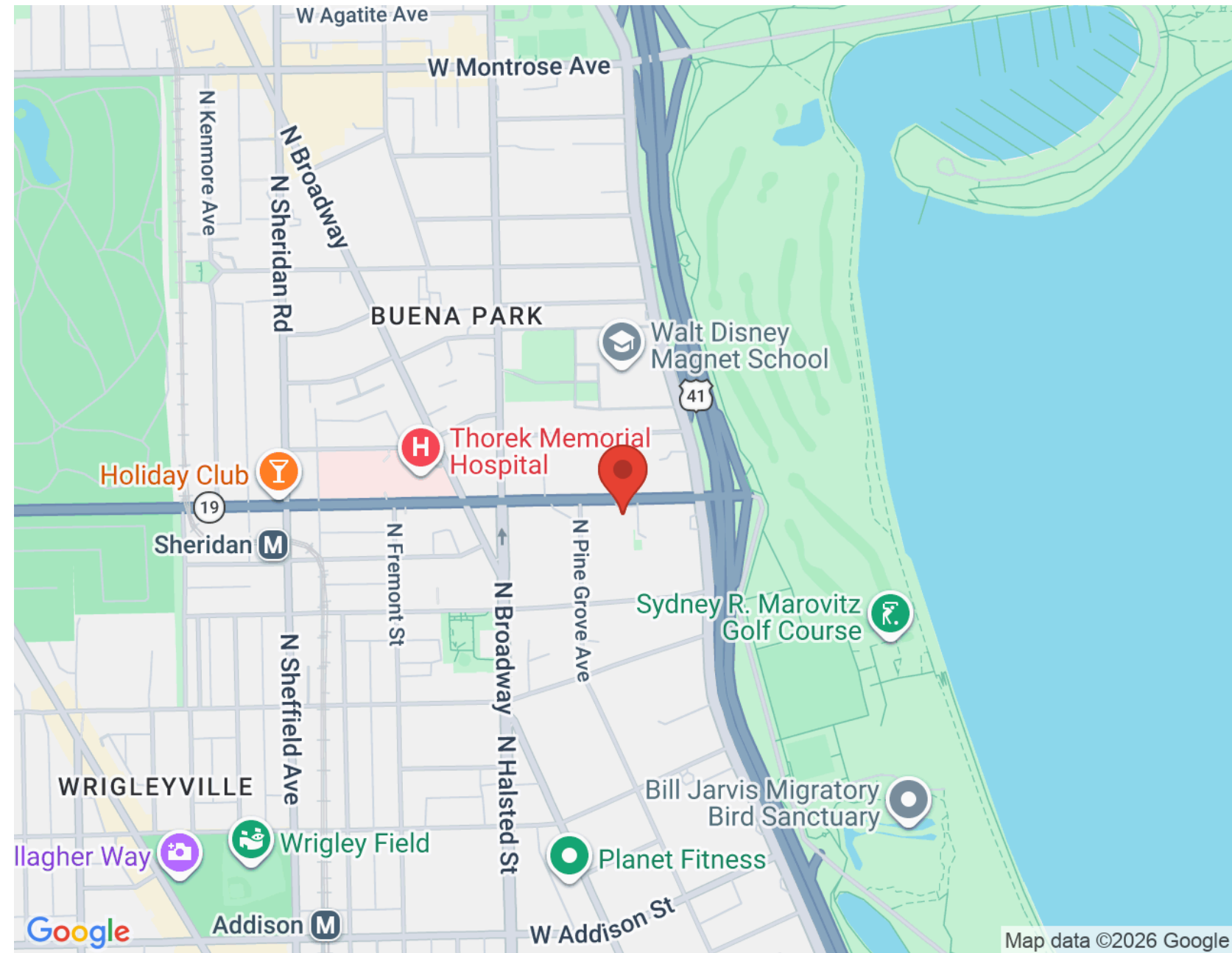








740 sq ft



Map data ©2026 Google



K.C. LAU

MOBILE (312) 315-7163

KCLAU@ATPROPERTIES.COM

WWW.ATPROPERTIES.COM/KCLAU

KC
LAU