



65 STIRRUP CUP COURT  
ST CHARLES



65 STIRRUP CUP COURT  
ST CHARLES

**LP** LUXURY  
PORTFOLIO  
INTERNATIONAL

65STIRRUPCUP.INFO

**@properties**



**DEBORA MCKAY** LUXURY BROKER SPECIALIST

630.513.0104 office  
Debora@TheMcKayGroup.com  
www.TheMcKayGroup.com

**m**  
THE MCKAY GROUP



**65 STIRRUP CUP COURT**  
ST CHARLES





65 STIRRUP CUP COURT EXCEPTIONAL ESTATE

ROOM DIMENSIONS

Master Bedroom .....	16'x25'
Second Bedroom .....	15'x21'
Third Bedroom .....	17'x21'
Fourth Bedroom .....	18'x17'
Dining Room .....	15'x17'
Kitchen .....	20'x19'
Family Room .....	26'x33'
Den .....	17'x27'
Florida Room .....	18'x20'

FEATURES

Remarkable Havlicek estate custom-built with only the best in mind! A home that stands out among all luxury properties in St. Charles. Situated on a beautifully manicured 4.16 acres w/impressive amenities inside & out! The chef's kitchen is ideal for entertaining on any level w/its sprawling island w/prep sink & beverage/wine fridge, an abundance of cabinetry, SS apps, farm sink & turreted eating area. Continue to entertain or relax in the grand, yet cozy family rm that features a vaulted, beamed ceiling, floor-to-ceiling stone fireplace & impressive bar area... MAIN FLOOR MASTER, handsome den w/wainscoting & coffered ceiling, 1st & 2nd flr laundries & the most incredible walk-out LL w/retro, 50's inspired diner/ice cream parlor, rec area & kitchenette... Stunning grounds w/lush, mature foliage, in-ground pool w/hot tub, brick paver patio, 1st flr veranda w/blue stone, covered porch, lovely ponds & 5 car garage w/porte cochere. One of the most intriguing & admirable homes in the area!



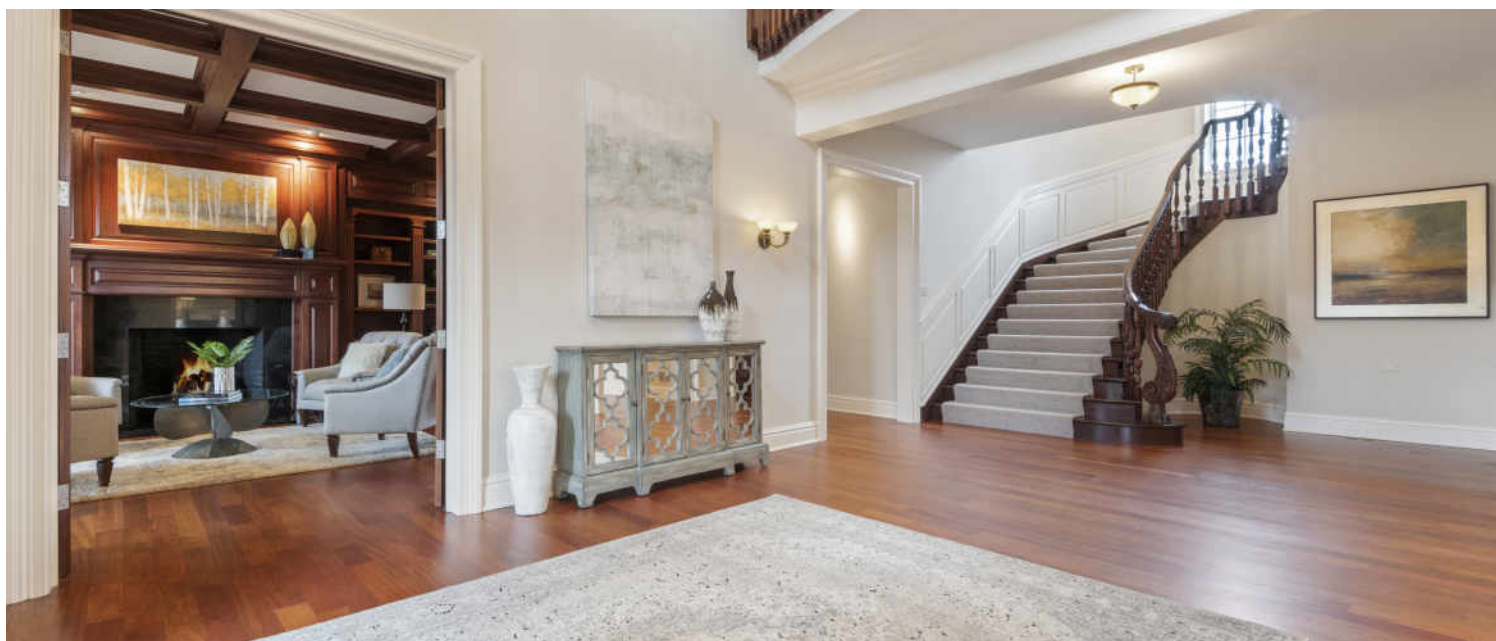
DEBORA MCKAY LUXURY BROKER SPECIALIST

630.513.0104 office

Debora@TheMcKayGroup.com  
www.TheMcKayGroup.com





















































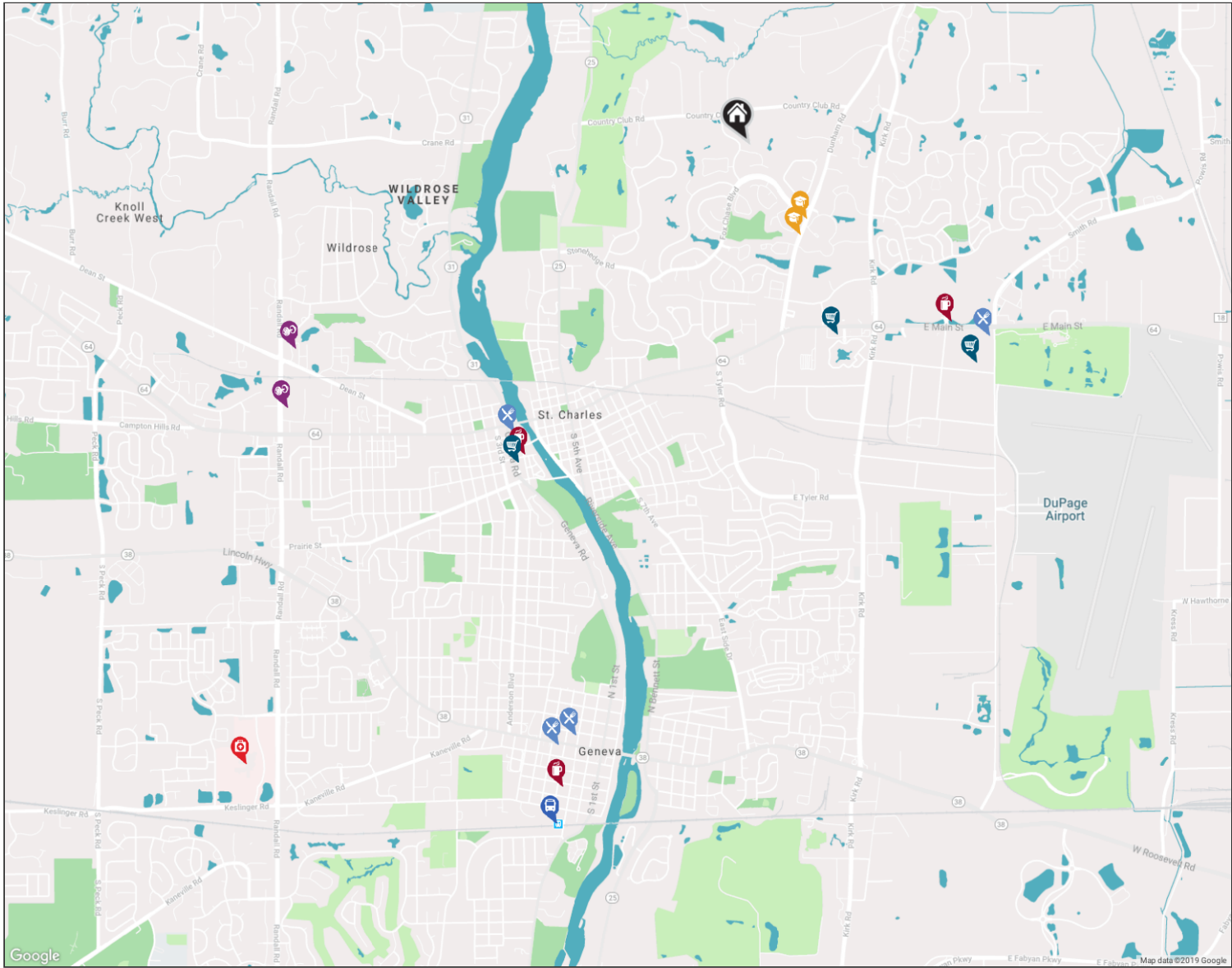








NEIGHBORHOOD GUIDE MAP



# NEIGHBORHOOD GUIDE



## RESTAURANTS

Portillo's Hot Dogs  
3895 EAST MAIN STREET, 1.7 MI

Pizzeria NEO  
31 SOUTH 1ST STREET, 2.0 MI

Nosh  
22 NORTH 3RD STREET, 3.4 MI

Bien Trucha  
410 WEST STATE STREET, 3.5 MI



## COFFEE SHOPS

Starbucks  
3830 EAST MAIN STREET, 1.5 MI

Arcedium Coffeehouse  
60 INDIANA STREET, 2.1 MI

Graham's 318 Coffeehouse  
316 FRANKLIN STREET, 3.7 MI



## SHOPPING

Walgreens  
2751 EAST MAIN STREET, 1.2 MI

Target  
3885 EAST MAIN STREET, 1.7 MI

Blue Goose Market  
300 SOUTH 2ND STREET, 2.2 MI



## HEALTH CLUBS

Tri-City Boxing and Muay Thai  
1920 DEAN ST SUITE B, 2.8 MI

XSport Fitness  
238 RANDALL ROAD, 2.9 MI



## HOSPITALS

Northwestern Medicine Delnor  
Hospital  
300 RANDALL RD, 4.4 MI



## SCHOOLS

Wredling Middle School  
1200 DUNHAM RD, 0.5 MI

St. Charles East High School  
1020 DUNHAM RD, 0.6 MI



## TRANSIT

Geneva  
METRA - UNION PACIFIC WEST, 3.9 MI

NO REPRESENTATIONS ARE MADE REGARDING THE ACCURACY OF THE INFORMATION PROVIDED.  
ALL DATA IS SUBJECT TO CHANGE AND SHOULD BE VERIFIED WITH LOCAL SOURCES.



@properties®

*Leading* REAL ESTATE  
COMPANIES  
OF THE WORLD®

LP  
LUXURY  
PORTFOLIO  
INTERNATIONAL®

