



660 BENT RIDGE LANE
BARRINGTON



660 BENT RIDGE LANE · BARRINGTON

@properties | CHRISTIE'S
INTERNATIONAL REAL ESTATE



MIMI NOYES BROKER

847.421.2836 mobile
847.381.0300 office
Mimi@MorrisonHomeTeam.com
www.MorrisonHomeTeam.com



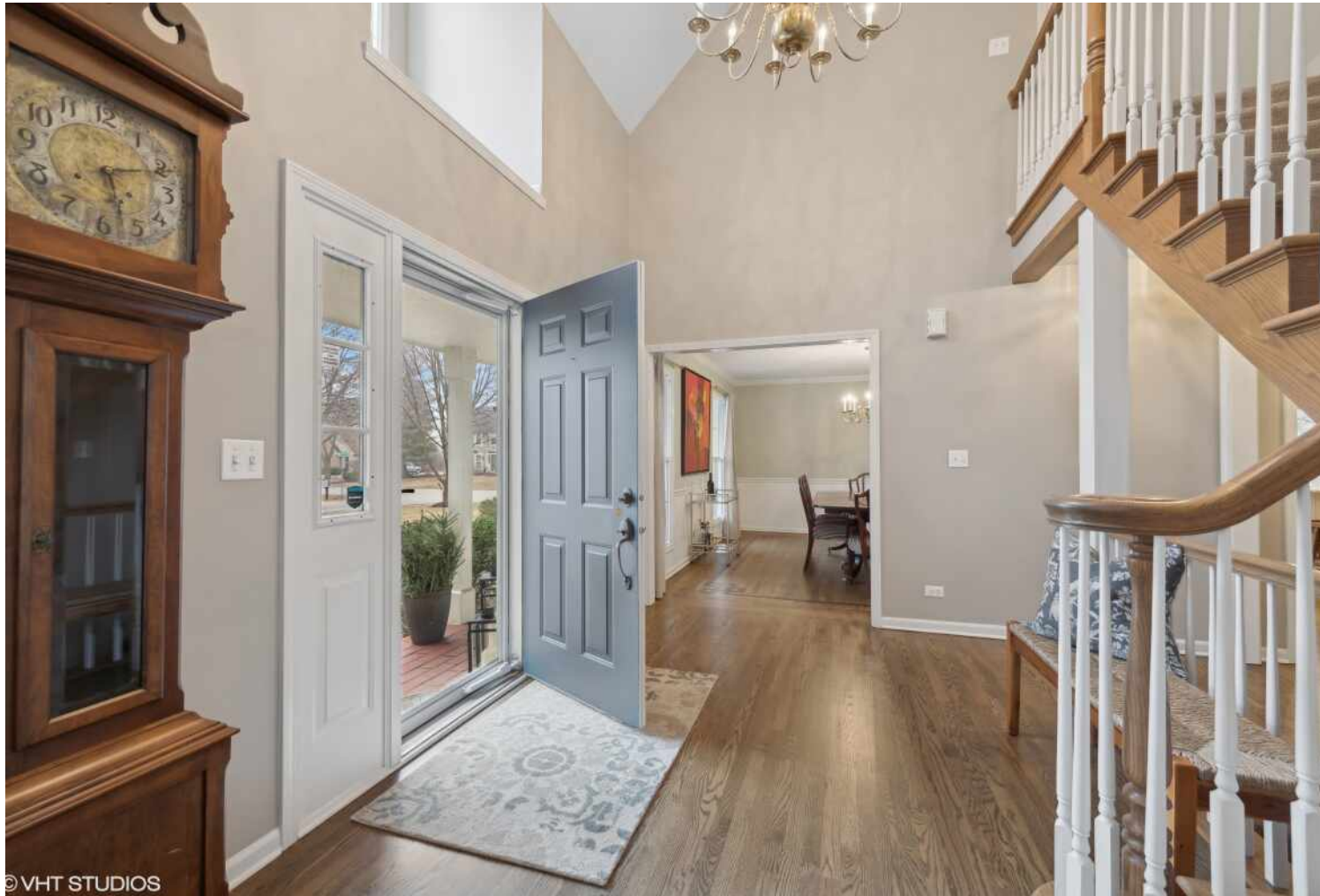
JOHN MORRISON BROKER

847.409.0297 mobile
847.381.0300 office
John@MorrisonHomeTeam.com
www.MorrisonHomeTeam.com



660 BENT RIDGE LANE • BARRINGTON





© VHT STUDIOS
FOYER

660 BENT RIDGE LANE FABULOUS & SPACIOUS CAPE COD WITH INTERIOR LOT AND PRIME CUL-DE-SAC LOCATION IN FLINT CREEK NEIGHBORHOOD!

FEATURES

Meticulous & beautifully updated home offers over 3,500 sq. ft of living space & a long list of improvements! A covered porch leads you to a welcoming 2-story foyer with a curved staircase & large formal Living & Dining Rooms. The Kitchen will take your breath away with an 11 ft. center island, alder cabinetry, a built-in buffet cabinet, granite counters, stainless appliances, walk-in pantry & a huge sun-drenched eating area. The adjacent laundry/mud room offers convenient storage cubbies & cabinetry, a service door & direct entry to the 3-car garage with epoxy floor & attic storage. The Family Room includes a wood burning fireplace & updated built-in bar. The Den could serve as a WFH option, Sunroom or Play Room. The bluestone & paver patio provides perfect outdoor living with separate seating & dining spaces plus space for a firepit & two natural gas hookups for grilling stations. The upper level boasts a grand Primary Suite with vaulted ceiling, sitting room, large walk-in closet & gorgeous renovated bath with soaking tub, a glass shower, vanity with double sinks & heated floors. There are three additional bedrooms & an updated full bath. The true full basement features a large REC Room, 5th Bedroom, full bath, 2nd kitchen & storage. Desirable Flint Creek subdivision offers regular neighborhood events, proximity to Citizen's Park, Cuba Marsh, Barrington Library, downtown shopping & dining, Metra & award-winning D220 Schools and so much more to appreciate in this fantastic home!



MIMI NOYES BROKER

847.421.2836 mobile
847.381.0300 office
Mimi@MorrisonHomeTeam.com
www.MorrisonHomeTeam.com



JOHN MORRISON BROKER

847.409.0297 mobile
847.381.0300 office
John@MorrisonHomeTeam.com
www.MorrisonHomeTeam.com



LIVING ROOM



LIVING ROOM



DINING ROOM



DINING ROOM



KITCHEN / BREAKFAST ROOM



KITCHEN



KITCHEN



KITCHEN



BREAKFAST AREA



FAMILY ROOM



FAMILY ROOM



WET BAR



DEN



DEN



POWDER ROOM



2ND FLOOR HALL



LAUNDRY ROOM



DIOS
PRIMARY BEDROOM



PRIMARY BEDROOM SITTING AREA / OFFICE



PRIMARY BEDROOM



PRIMARY BATHROOM



PRIMARY BATHROOM



PRIMARY BATHROOM



2ND BEDROOM



3RD BEDROOM



2ND FLOOR HALL BATH



2ND FLOOR HALL BATH



4TH BEDROOM



RECREATION / GAME ROOM



RECREATION ROOM



2ND KITCHEN



LOWER LEVEL 2ND KITCHEN



RECREATION / GAME ROOM



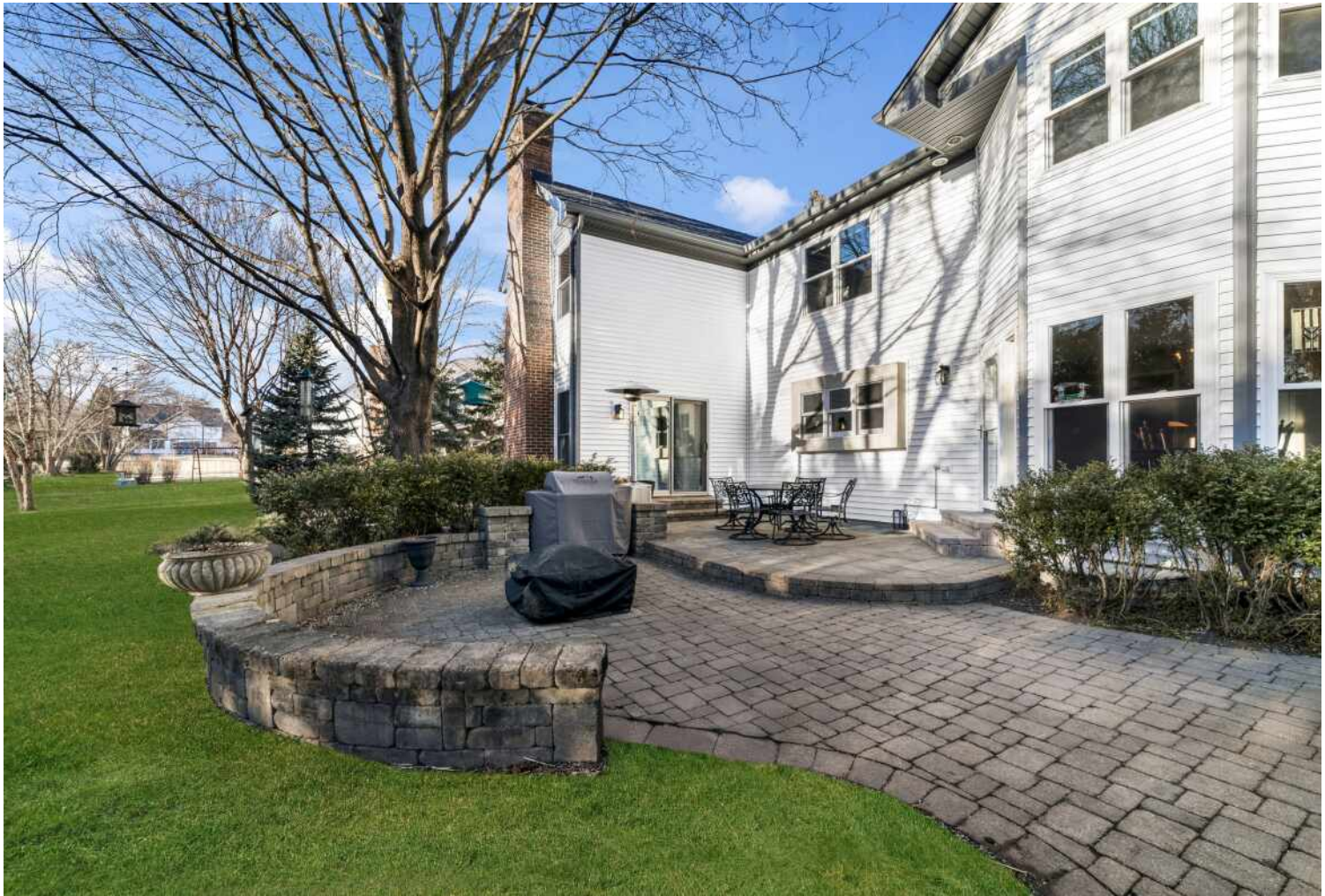
RECREATION ROOM / 5TH BEDROOM



5TH BEDROOM



5TH BEDROOM



PATIO



THE VILLAGE OF **BARRINGTON** MAY HAVE THE LARGEST RESIDENTIAL HISTORIC DISTRICT IN THE STATE, BUT IT'S DEFINITELY NOT LIVING IN THE PAST

Locals love the historic character of this thriving community and also appreciate the many amenities it has to offer, from parks and trails to restaurants and specialty shops.

Many of the beautifully-restored Victorian, Gothic, and Queen Anne homes that line the village's main streets have been repurposed as unique shops and businesses. Meanwhile, homeowners have rehabbed and restored many historic homes back to their former glory with the addition of modern amenities. The village's historic theater opened in 1927 and still operates today.

Barrington also thrives when it comes to recreation. Citizens Park is one of the area's gems, offering wide-open spaces as well as tennis and basketball courts, cross-country ski trails, nature paths, an events pavilion, and a tree house.

The village's downtown center is filled with shoppers, diners, and residents enjoying one of the area's special events, whether it's an art festival, wine walk, or a farmers market. The nearby Barrington Metra station provides a convenient commute to downtown Chicago.

Barrington homes range from Victorians and Colonials to stunning new construction and sprawling mansions with large lots and water views.



REAR VIEW



AERIAL VIEW



THREE CAR SIDE LOAD GARAGE



AERIAL VIEW

@properties® | CHRISTIE'S
INTERNATIONAL REAL ESTATE

Leading REAL ESTATE
COMPANIES
OF THE WORLD®

