

66 TRYON FARM LANE  
MICHIGAN CITY







#### ROOM DIMENSIONS

LIVING ROOM : 10.0' × 10.58'

KITCHEN : 7.83' × 11.33'

PRIMARY BEDROOM : 11.16' × 9.67'

SECOND BEDROOM : 11.16' × 13.33'

THIRD BEDROOM : 11.0' × 6.92'

## 66 TRYON FARM LANE

Don't miss this opportunity to live in the highly coveted and conservation-minded community of Tryon Farms. This sophisticated 3 bed / 1 bath modern cabin is tucked into the woods and offers peace, tranquility and privacy. Camping was never this cool. The open concept floor plan, large windows and high ceilings brings the outdoors in. The house boasts three sleeping areas, a screened-in porch perfect for outdoor living as well as a deck. The home is being sold turnkey. Want to embrace the outdoors? Stroll or bike Tryon's 5+ miles of trails spread over 120 acres of shared and preserved woodlands, pasture, meadowlands and pond; or swim in the associations' eco-friendly pool. (Separate membership required.) Located only 65 miles from Chicago's loop and a few miles to the beaches of Lake Michigan, this is the perfect get away. (NOTE: Two of the bedrooms are separated by a partial wall which does not go all the way to the ceiling or have a door which closes. See floor plan for further detail.)

3 BEDROOM

1 BATH

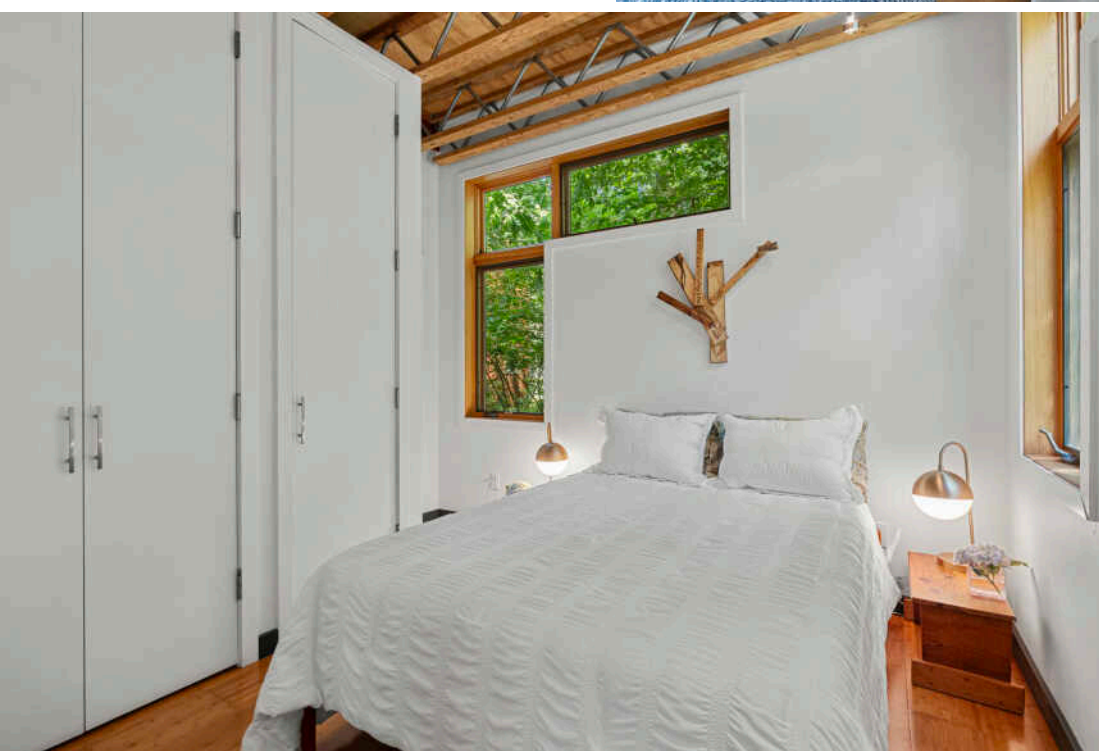
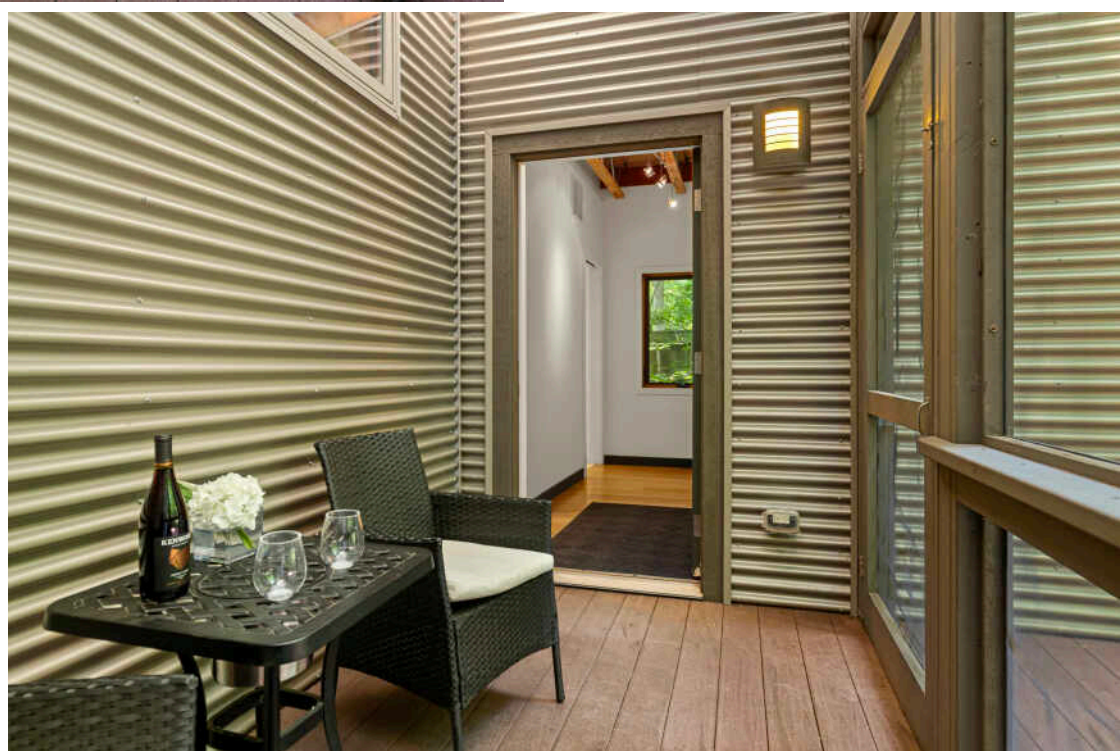
TAXES: \$4,052

ASSESSMENTS: \$285 / MONTH

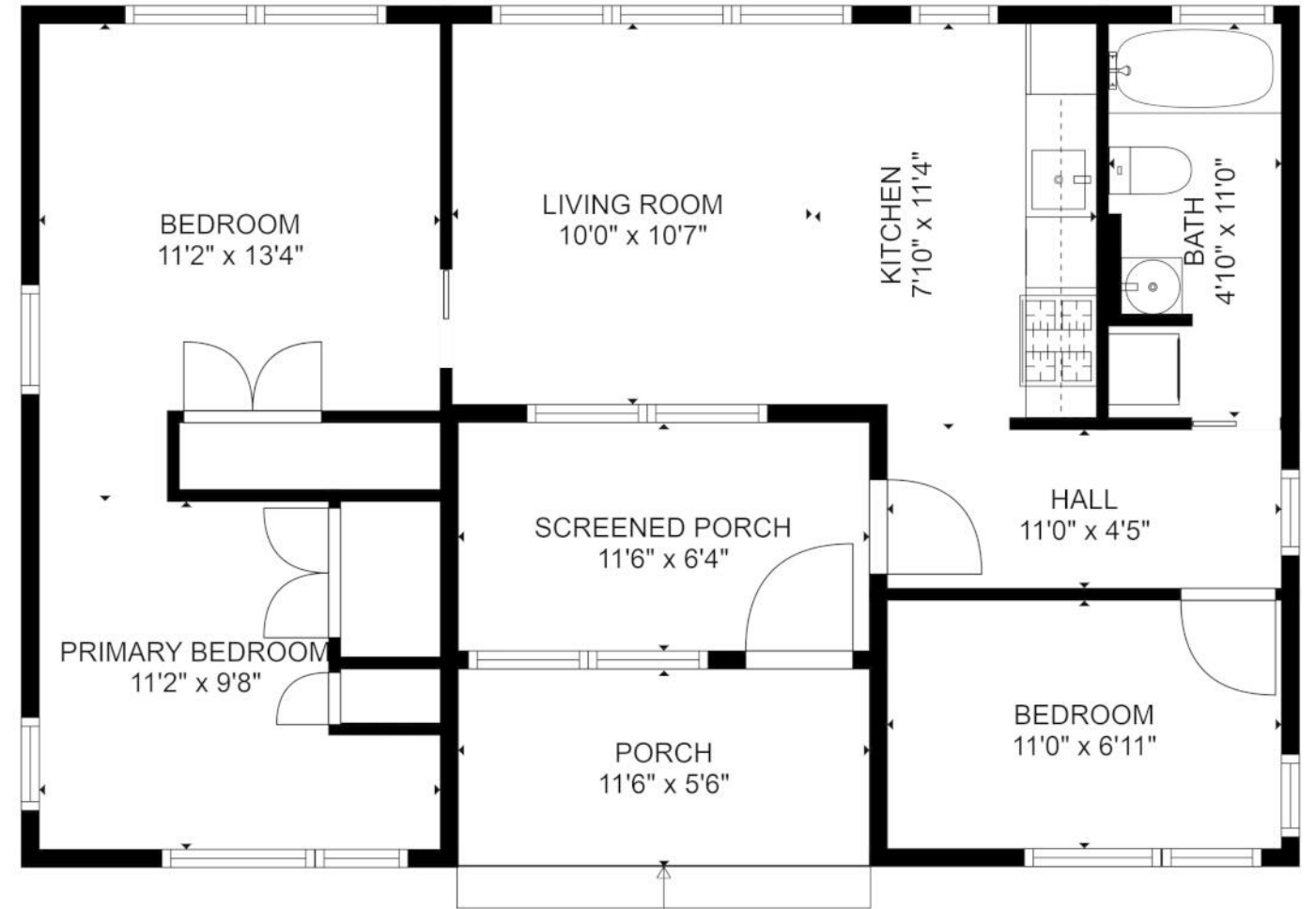












**TOTAL: 644 sq. ft**  
 FLOOR 1: 644 sq. ft  
 EXCLUDED AREAS: SCREENED PORCH: 73 sq. ft, PORCH: 63 sq. ft  
 FLOOR PLAN CREATED BY CUBICASA APP. MEASUREMENTS DEEMED HIGHLY RELIABLE BUT NOT GUARANTEED.





NOTES \_\_\_\_\_

\_\_\_\_\_

\_\_\_\_\_

\_\_\_\_\_

\_\_\_\_\_

\_\_\_\_\_

\_\_\_\_\_

\_\_\_\_\_

\_\_\_\_\_

\_\_\_\_\_

\_\_\_\_\_

\_\_\_\_\_

\_\_\_\_\_

\_\_\_\_\_

\_\_\_\_\_



## MICHAEL JEFVERT

(312) 316-9151

MJEFVERT@ATPROPERTIES.COM

111 FRANKLIN ST.

MICHIGAN CITY, IN, 46360



All specifications, features, designs, price, assessments, taxes and materials are subject to change without notice. Depicted floor plans and architectural renderings are only an artist's impression.

