

6734 BARING AVENUE
HAMMOND

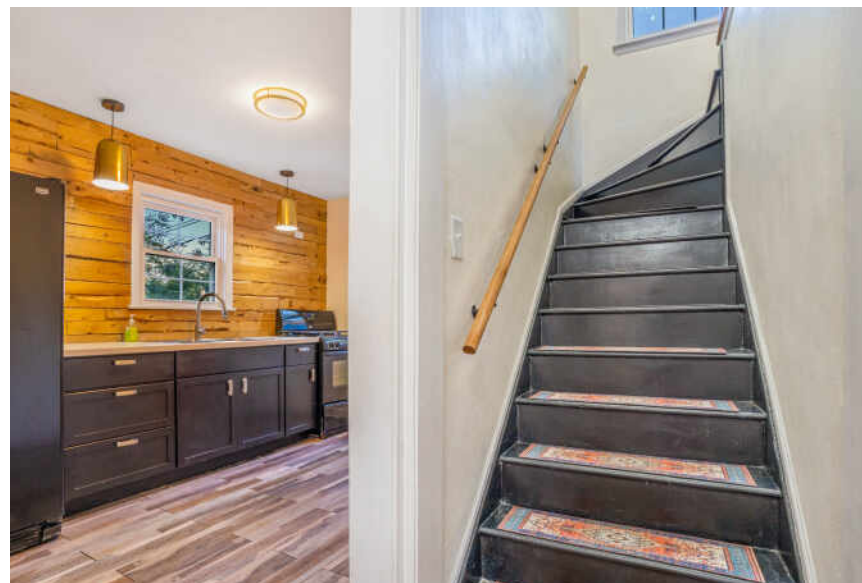
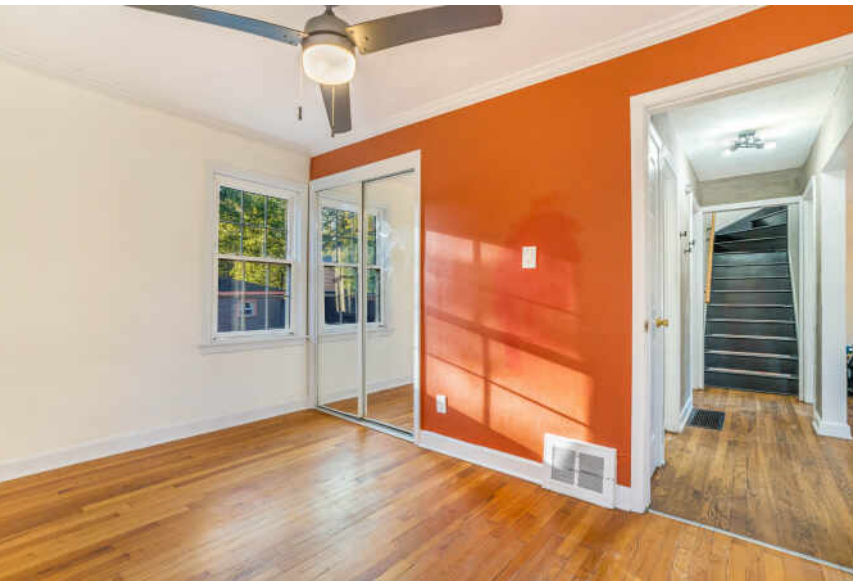
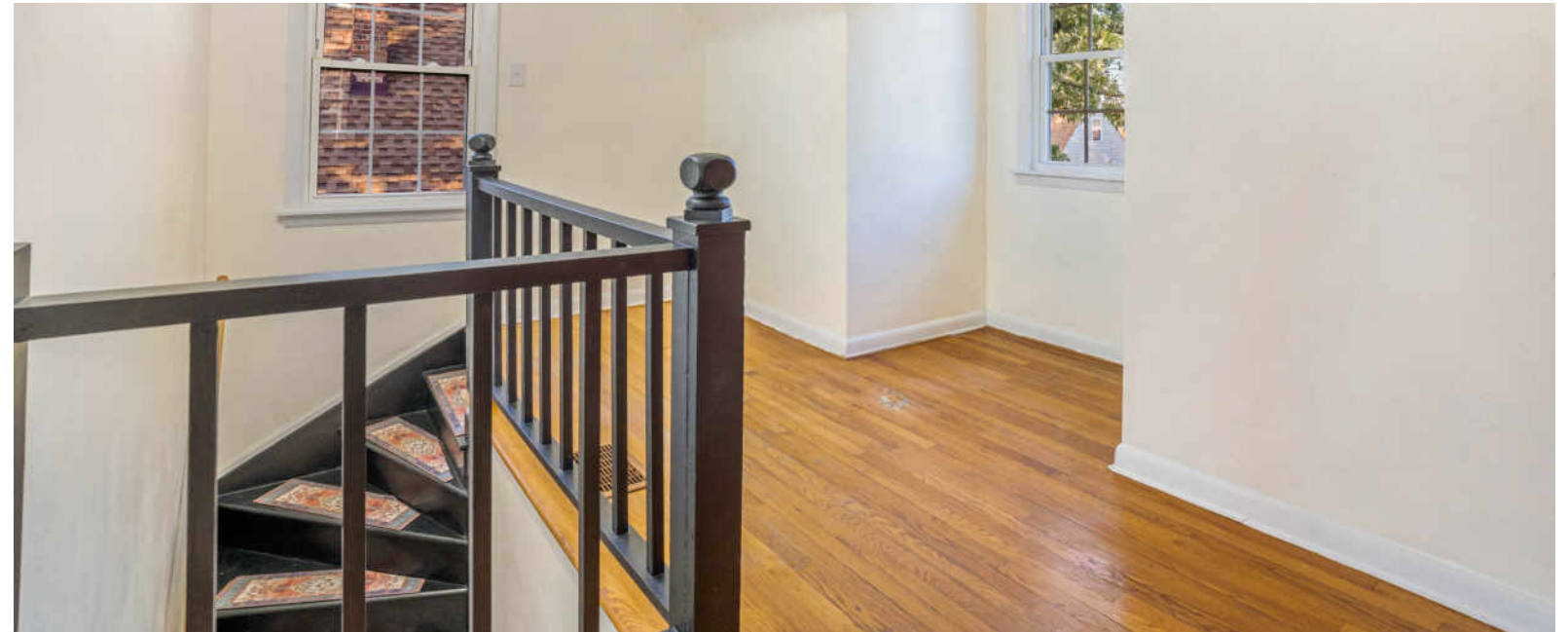




3 BEDROOM
2 BATH
TAXES: \$1,460

Charming 3-bedroom, 2-bath home featuring beautiful hardwood floors throughout. The open basement offers endless possibilities and includes a roughed-in 3rd bathroom, perfect for future expansion. Enjoy a fully fenced backyard and detached garage for convenience and privacy. Ideally located near the brand-new Hammond YMCA and offering quick access to I-84 and I-90 for easy commuting. Home is being sold as-is, presenting a great opportunity for the next owner to add their personal touch.







LOCATED ALONG THE BORDER OF ILLINOIS AND INDIANA, **HAMMOND** IS PART OF THE CHICAGO METROPOLITAN AREA.

The city is home to attractions such as the Horseshoe Hammond Casino and the Indiana Welcome Center, which features an annual holiday exhibit dedicated to the movie A Christmas Story. Residents also enjoy various parks that offer access to trails, playgrounds, sports courts, and picnic shelters, and are popular spots for local happenings. Wolf Lake Memorial Park is the site of the annual Festival of the Lakes, where locals gather for live performances from national and international acts, a carnival, and boat rides.

Citywide sports and recreation programs provide all sorts of entertainment for residents looking to get involved in the community. Recreational offerings include everything from boating, windsurfing, and sailing to visual and performing arts. The Jean Shepherd Community Center provides weekly community-based events and activities, while the Hammond Fitness Center is full of amenities such as an indoor track and swimming pool, racquetball courts, and fitness classes.

The Civic Center Stadium also hosts a calendar of sports events, concerts, tradeshow, and other large functions each year, and is an exciting place to catch live entertainment.

Hammond residents have access to I-90, I-80, and I-94, as well as a stop on the South Shore Line. Amtrak provides service through the Hammond-Whiting station to Chicago and other cities. Midway International Airport is about 25 miles away from Hammond.

This image shows a single sheet of white paper with horizontal ruling lines. The lines are evenly spaced and run across the width of the page. There are no margins, text, or other markings on the paper.



ERIKA AVITIA

773.946.6661

ERIKAAVITIA@ATPROPERTIES.COM

WWW.ERIKAAVITIA.COM



All specifications, features, designs, price, assessments, taxes and materials are subject to change without notice. Depicted floor plans and architectural renderings are only an artist's impression.

