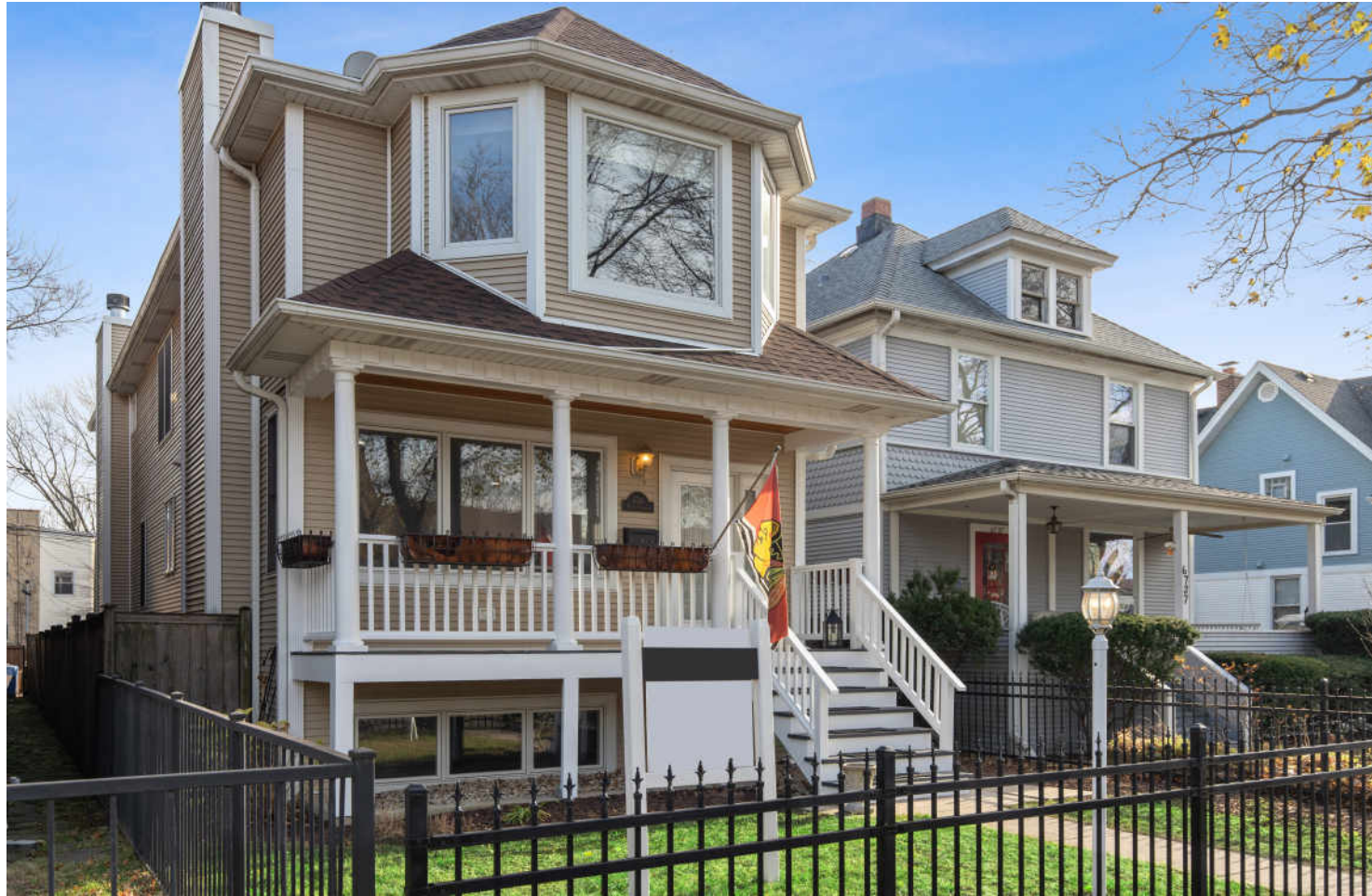


6741 N OLIPHANT AVENUE
EDISON PARK





ROOM DIMENSIONS

LIVING ROOM : 18' × 15'

FAMILY ROOM : 18' × 16'

DINING ROOM : 18' × 11'

KITCHEN : 14' × 13'

PRIMARY BEDROOM : 17' × 13'

SECOND BEDROOM : 12' × 9'

THIRD BEDROOM : 19' × 18'

FOURTH BEDROOM : 13' × 12'

4 BEDROOM

4.1 BATH

TAXES: \$12,008.03 | 2019 | HOMEOWNER

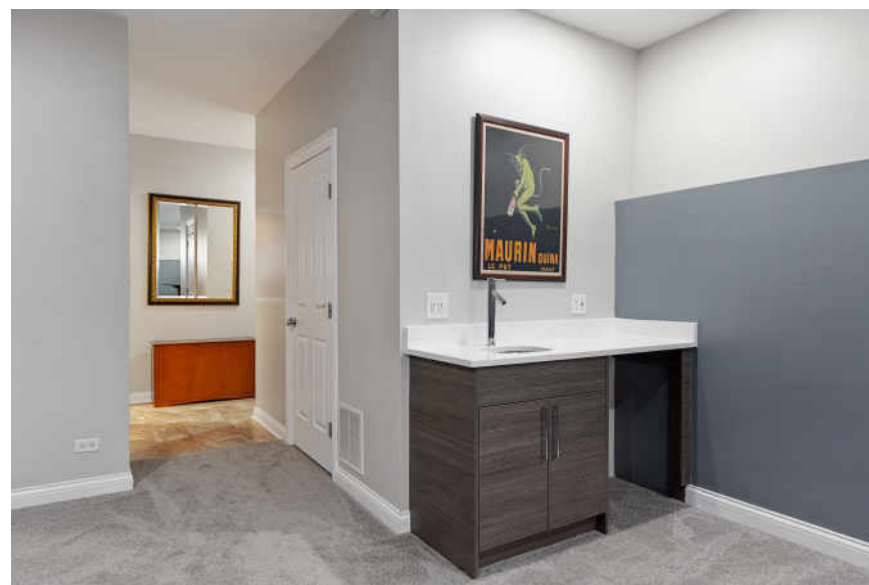
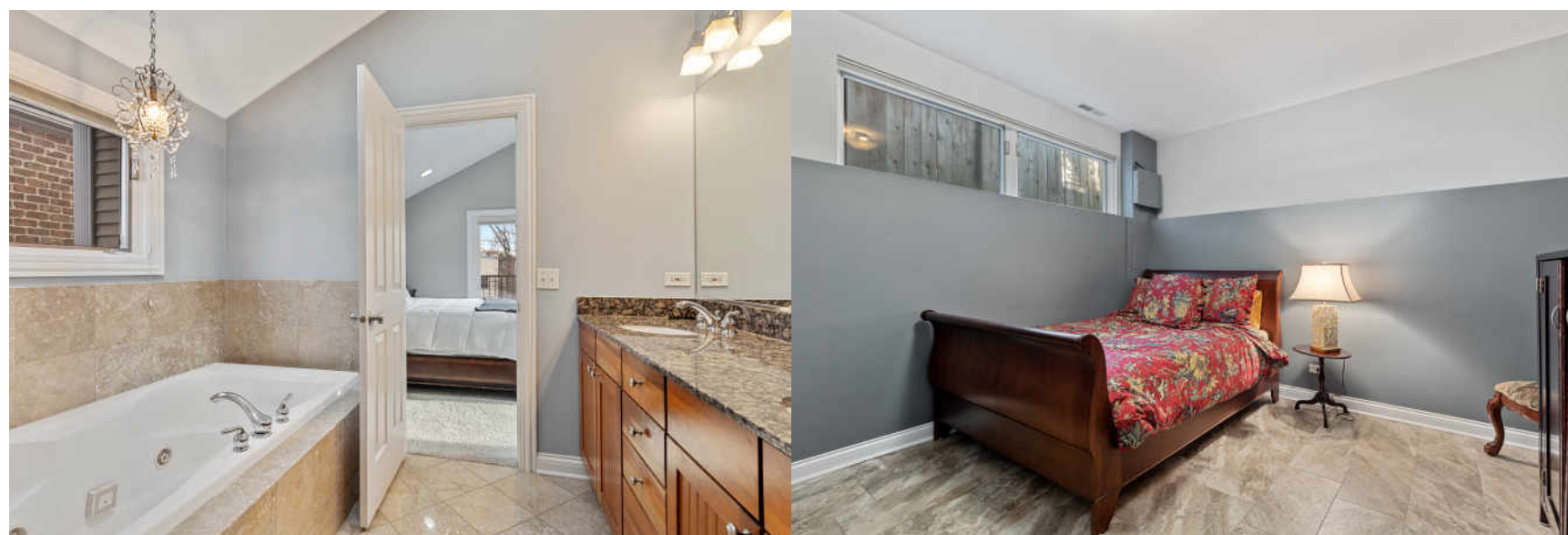
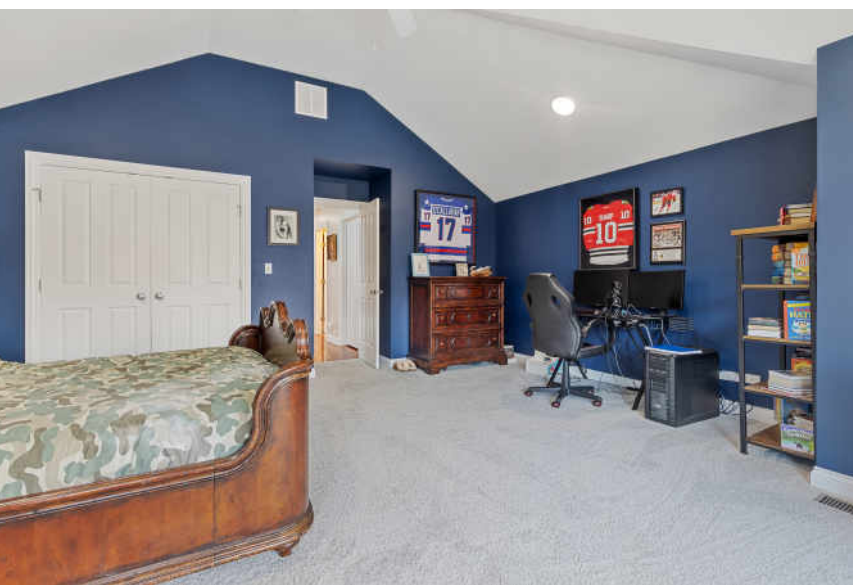
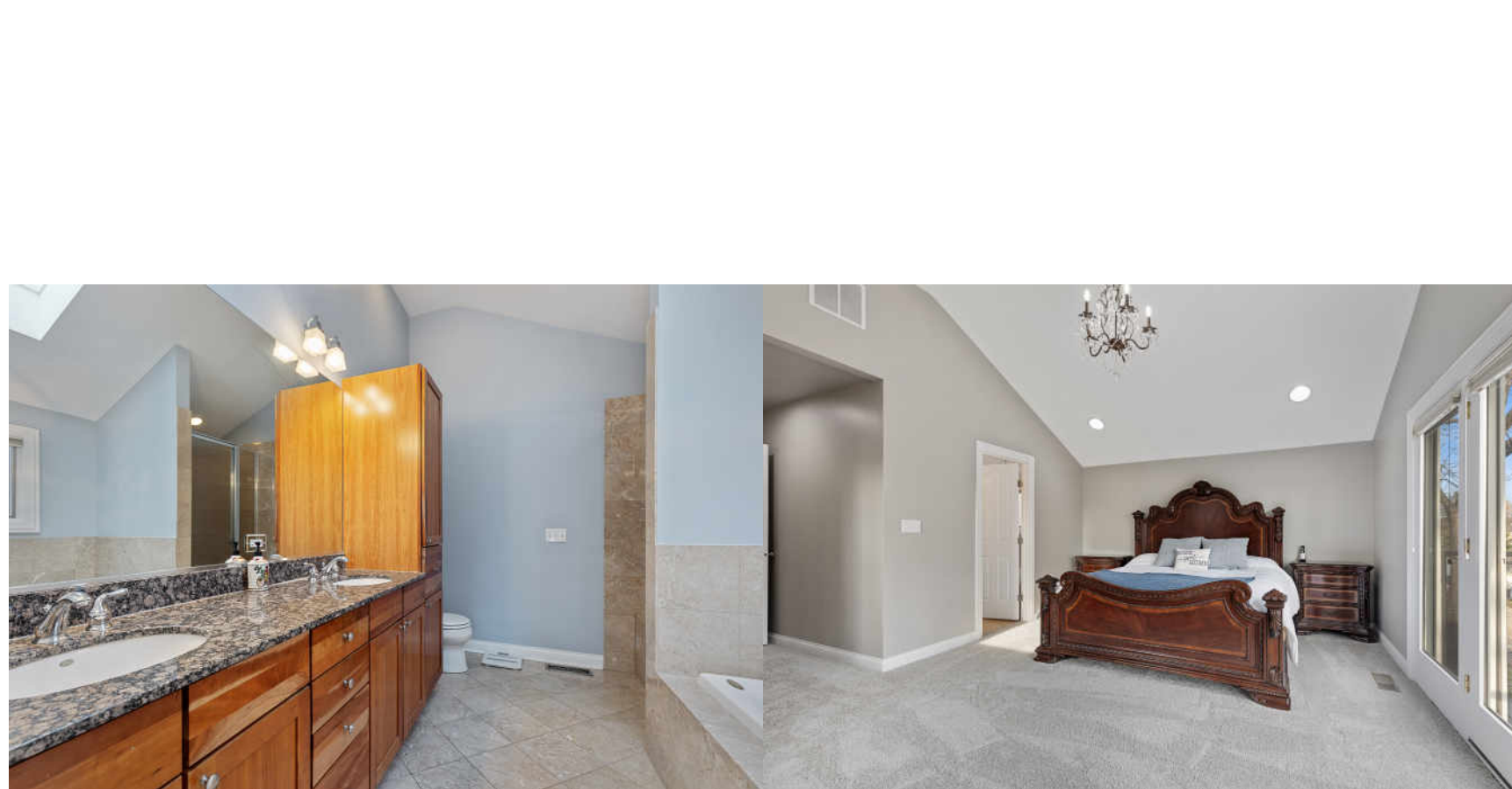
DOWNTOWN EDISON PARK GEM

Beautiful Nicely Updated Newer Construction Home in Great Location of Edison Park Just Steps Away From all Things Fun To Do! This Home Features Large Welcoming Porch, 2 Fireplaces, Refreshed & Remodeled Chef's Kitchen Opening up Into the 1st Flr Family Rm, 3 Large Bedrms Up Including Primary Suite with Big Bathrm, Organized Closet and Cute Balcony, 2nd Flr Also has Big Bay Window in Front Bedroom & Skylights in the Staircase Which make it Nice and Bright, Lower Level Is a Perfect Entertaining Space with Recreation Rm, Bar, Sink and Refrigerator, Guest Bed & Bath with Exterior Access. The Yard Has Beautifully Refurbished Decks & Stairs Leading to the Newly Rehabbed Roof-Top Deck Perfect for Entertaining. NEW ROOF OCT 2020 & H2O 2017. Highly Rated Ebinger Elementary & Taft HS- Just Turn the Key and Make This Your New Home!

- Newer Construction
- Remodeled Chef's Kitchen
- Large Bedrooms
- Great Lower Level for Entertainment
- Newly Rehabbed Roof-Top Deck
- New Roof 2020
- Hot Water Heater Installed 2017
- Great Location
- Downtown Edison Park

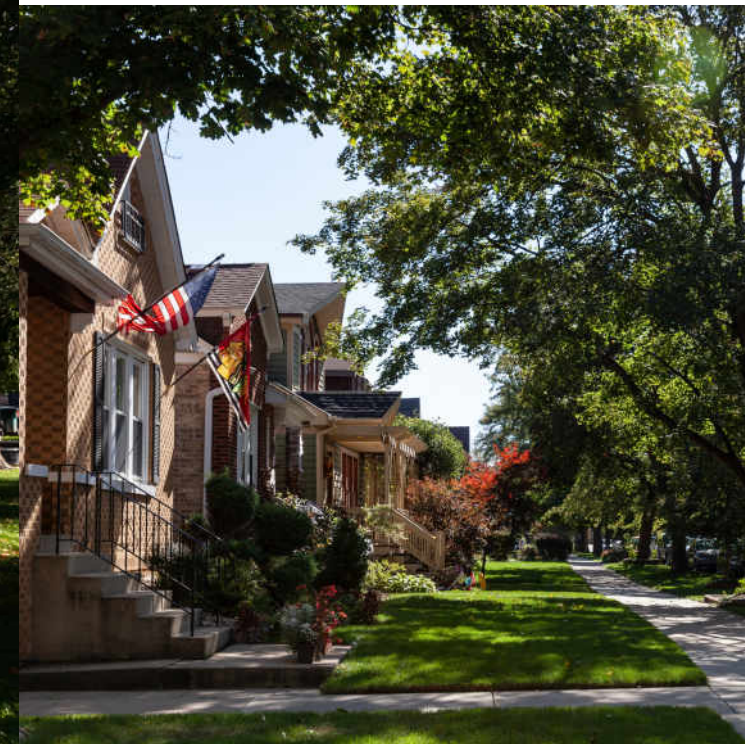








SIZES AND DIMENSIONS ARE APPROXIMATE, ACTUAL MAY VARY.



EDISON PARK IS A CLASSIC CHICAGO NEIGHBORHOOD, SITTING ON THE EDGE OF CITY AND SUBURBIA.

The charming community is just 15 miles from downtown Chicago and offers the quiet comforts of suburban living.

Located between the Des Plaines River and the Chicago River, Edison Park once served as a watershed divide and portage for early-day travelers. It was later named after the noteworthy American inventor, Thomas Edison.

Today, residents and visitors enjoy plenty of local shopping as well as the eateries and bakeries along the iconic Restaurant Row. Tree-lined streets and tidy bungalows add to the community's allure, along with four Chicago Park District parks. Located in the heart of its namesake community, Edison Park features a historic fieldhouse that serves as a community and arts center. The center offers a variety of art classes focused on mixed media, drawing, painting and ceramics. It is also the site of several social clubs.

Commuters can take a quick trip downtown on Edison Park's Metra line. They also have convenient access to CTA bus routes and "L" lines, major expressways and O'Hare International Airport.



This image shows a blank sheet of white paper with horizontal ruling lines. The lines are evenly spaced and run across the width of the page. There are no margins, text, or other markings on the paper.



LISA SANDERS

(773) 398-0378

847-657-7000

LISASANDERS@ATPROPERTIES.COM

LISA
SANDERS

your REALTOR® for life



@properties®

6741NOLIPHANTAVENUE.INFO

All specifications, features, designs, price, assessments, taxes and materials are subject to change without notice. Depicted floor plans and architectural renderings are only an artist's impression.

