



675 E WOODLAND ROAD
LAKE FOREST

675 E WOODLAND ROAD · LAKE FOREST



@properties | CHRISTIE'S
INTERNATIONAL REAL ESTATE

LP LUXURY
PORTFOLIO
INTERNATIONAL



SAMANTHA TRACE BROKER

847.571.0537 mobile
847.295.0700 office
samanthatrace@atproperties.com



LISA TRACE BROKER

708.710.4104 mobile
847.295.0700 office
lisatrace@atproperties.com

◆TRACE TEAM◆

675 E WOODLAND ROAD · LAKE FOREST



@properties | CHRISTIE'S
INTERNATIONAL REAL ESTATE

LP LUXURY
PORTFOLIO
INTERNATIONAL



675 E WOODLAND ROAD

FEATURES

Perfectly positioned in coveted East Lake Forest just moments from Lake Michigan, this exceptional estate sits on over an acre and offers timeless design, privacy, and effortless elegance. Highlights include a brand new DaVinci roof (May 2026), a coveted first-floor primary suite, soaring 9' ceilings, exquisite moldings, and light-filled living spaces throughout. The renovated kitchen opens seamlessly to a sun-filled family room, while gracious formal spaces include a paneled library, elegant dining room, and refined living room with fireplace and oversized bay window. Professionally landscaped grounds by Chalet create a truly private, garden-like retreat with a bluestone and paver patio, manicured boxwoods, vibrant rose and peony gardens, and a charming fountain previously enjoyed as a koi pond. The south-facing, fully fenced backyard offers exceptional privacy and ample space for a future pool. The home features four bedrooms and four full bathrooms, including two main-level ensuite bedrooms. Upstairs, two expansive ensuite bedrooms offer exceptional space and storage, with one featuring an adjoining bonus room ideal for a playroom, fitness studio, or retreat. The second floor also allows for the easy addition of a third bedroom and bathroom. A rare opportunity in one of East Lake Forest's most sought-after locations.



SAMANTHA TRACE BROKER

847.571.0537 mobile
847.295.0700 office
samanthatrace@atproperties.com



LISA TRACE BROKER

708.710.4104 mobile
847.295.0700 office
lisatrace@atproperties.com













































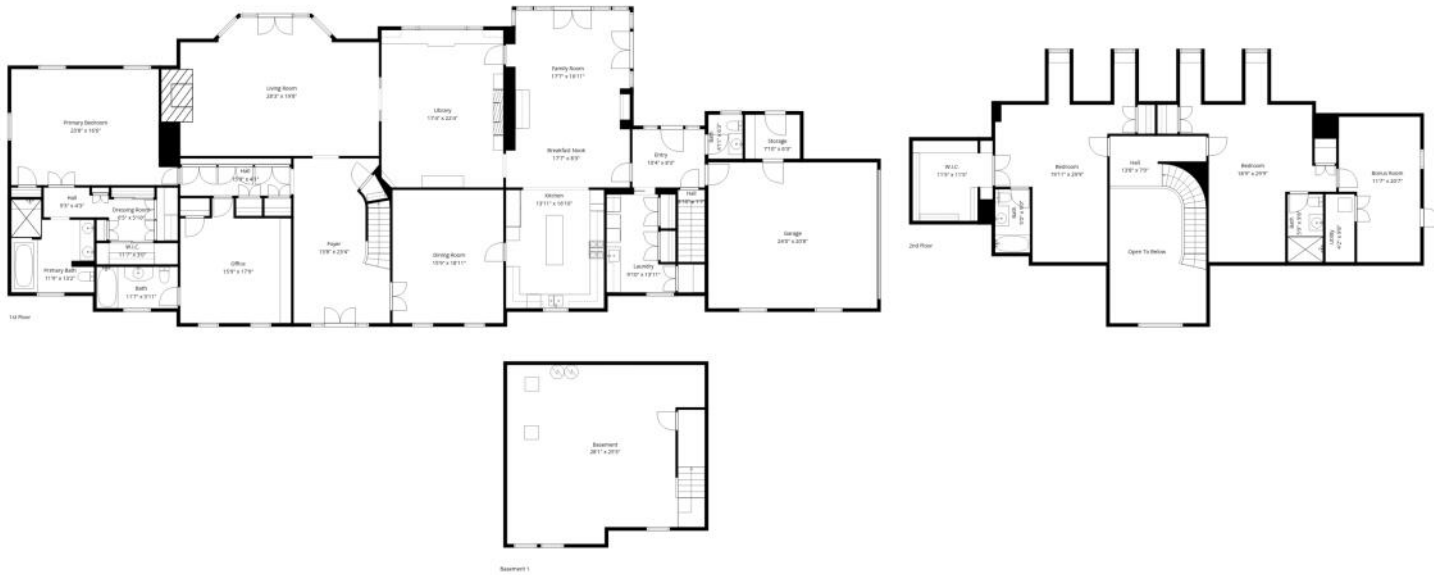






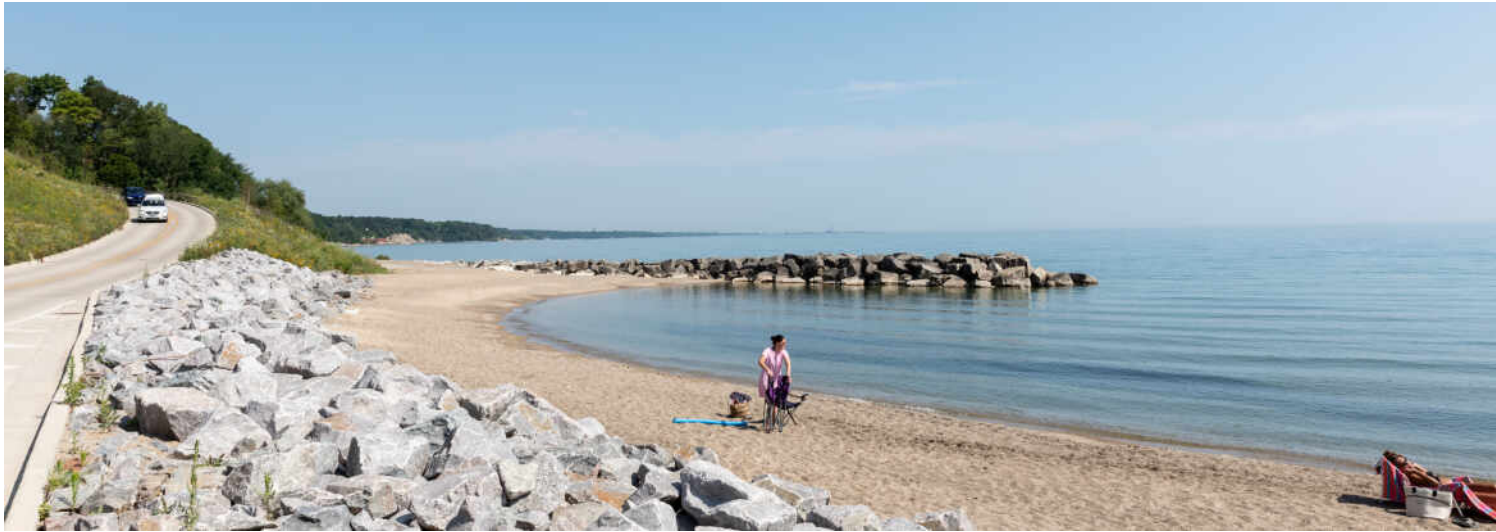






TOTAL: 5556 sq. ft
 Basement 1: 0 sq. ft, 1st floor: 4217 sq. ft, 2nd floor: 1339 sq. ft
 EXCLUDED AREAS: BASEMENT: 679 sq. ft, STORAGE: 49 sq. ft, LOW CEILING: 97 sq. ft,
 OPEN TO BELOW: 222 sq. ft, WALLS: 377 sq. ft

Floor Plan Created By Cubicasa App. Measurements Deemed Highly Reliable But Not Guaranteed.



WITH ITS TOWERING TREES, PICTURESQUE STREET PLAN, AND BLUFFS
OVERLOOKING LAKE MICHIGAN, IT'S EASY TO SEE WHY **LAKE FOREST** IS KNOWN
FOR ITS NATURAL BEAUTY.

Locals love the architecturally significant homes, flawless landscaping, and scenic lakefront setting – all of which contribute to Lake Forest's effortless beauty. The community also has a quaint downtown with a variety of shops and restaurants at Market Square.

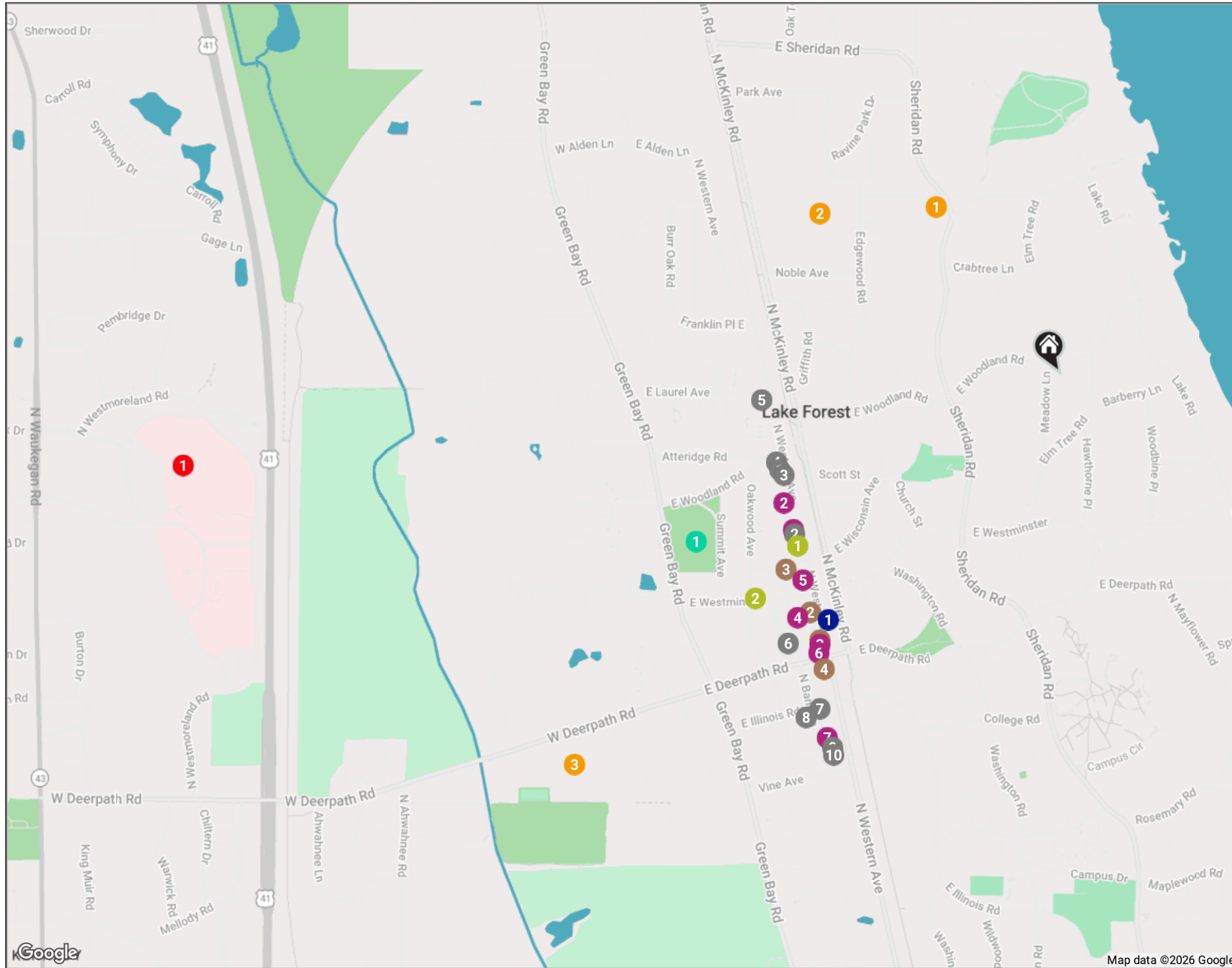
Rich in history, the community offers true luxury in a resort-style setting. Historic estates built by legendary architects Howard Van Doren Shaw, David Adler, and Henry Ives Cobb are interspersed among elegant homes with impeccable landscaping. Properties range from multi-million-dollar mansions to maintenance-free new construction condominiums and single-family homes with a convenient in-town location.

The community boasts schools including Lake Forest Academy, Lake Forest College, and Lake Forest Graduate School of Management.

At the heart of Lake Forest is Market Square, a historically significant landmark and charming hub of boutique shopping and dining. Cultural and recreational opportunities abound including the Gorton Community Center and Lake Forest Recreation Center, as well as at beautiful beaches, golf courses, and biking trails. There is also a Metra station right in town, providing commuters with convenient access to downtown Chicago.

NEIGHBORHOOD GUIDE MAP

675 E WOODLAND ROAD
34



NEIGHBORHOOD GUIDE

RESTAURANTS _____

- 1 Follia
950 NORTH WESTERN AVENUE SUITE 120, 0.6 MI
- 2 Ferentino's Pizzeria
842 NORTH WESTERN AVENUE, 0.6 MI
- 3 Duffer's Pub
950 NORTH WESTERN AVENUE, 0.6 MI
- 4 Kuro Bistro
950 NORTH WESTERN AVENUE #106, 0.6 MI
- 5 Sophia Steak Lake Forest
181 E LAUREL AVE, 0.6 MI
- 6 Le Colonial Lake Forest
655 FOREST AVE, 0.8 MI
- 7 Francesca's Intimo
293 E ILLINOIS RD, 0.8 MI
- 8 Deer Path Inn
255 EAST ILLINOIS ROAD, 0.9 MI
- 9 Egg Harbor Cafe
512 NORTH WESTERN AVENUE, 0.9 MI

- 10 Chief's Pub
502 NORTH WESTERN AVENUE, 0.9 MI

COFFEE _____

- 1 Starbucks Coffee Company
672 NORTH WESTERN AVENUE, 0.7 MI
- 2 Gerhard's Elegant European Desserts
720 NORTH WESTERN AVENUE #1820, 0.7 MI
- 3 Hometown Coffee & Juice
231 EAST WISCONSIN AVENUE, 0.7 MI
- 4 Dunkin'
620 NORTH WESTERN AVENUE, 0.8 MI

SHOPPING _____

- 1 The Fresh Market
850 NORTH WESTERN AVENUE, 0.6 MI
- 2 Jewel-Osco
890 NORTH WESTERN AVENUE, 0.6 MI
- 3 Lake Forest Book Store
662 NORTH WESTERN AVENUE, 0.7 MI

- 4 Kiddles Sports
258 MARKET SQUARE COURT, 0.7 MI

- 5 Smith's Men's Store
770 NORTH WESTERN AVENUE #1A, 0.7 MI

- 6 Walgreens
296 EAST DEERPATH ROAD, 0.8 MI

- 7 CVS
520 NORTH WESTERN AVENUE, 0.9 MI

GYM _____

- 1 Forever Om Yoga
828 NORTH WESTERN AVENUE, 0.6 MI
- 2 BIRD barre
188 EAST WESTMINSTER, 0.8 MI

MEDICAL _____

- 1 Northwestern Medicine Catherine Gratz Griffin Lake Forest Hospital
1000 NORTH WESTMORELAND ROAD, 1.8 MI

SCHOOLS _____

- 1 Sheridan Elementary School
1360 NORTH SHERIDAN ROAD, 0.4 MI
- 2 Lake Forest High School
1285 N MCKINLEY RD, 0.6 MI
- 3 Deer Path Middle School
95 DEERPATH, 1.3 MI

TRANSIT _____

- 1 Lake Forest
METRA - UNION PACIFIC NORTH, 0.7 MI

PARKS _____

- 1 West Park
850 SUMMIT AVENUE, 0.8 MI

@properties® | CHRISTIE'S
INTERNATIONAL REAL ESTATE

Leading REAL ESTATE
COMPANIES
OF THE WORLD®

LP
LUXURY
PORTFOLIO
INTERNATIONAL

