

685 WICKLOW ROAD
DEERFIELD



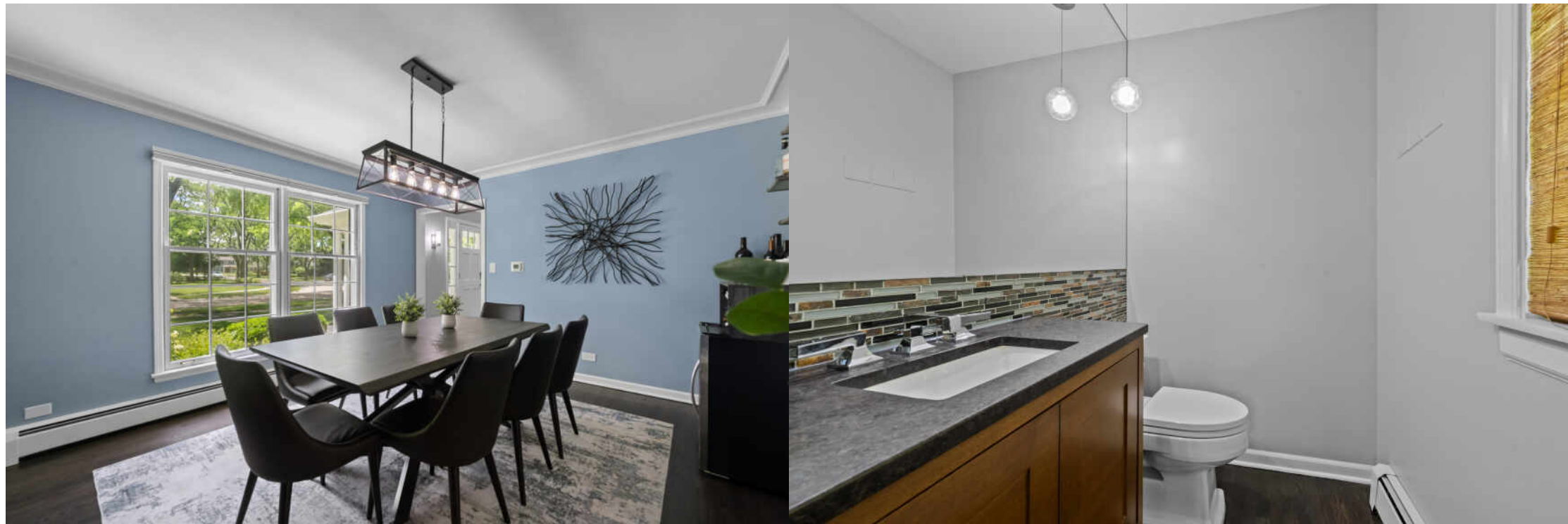


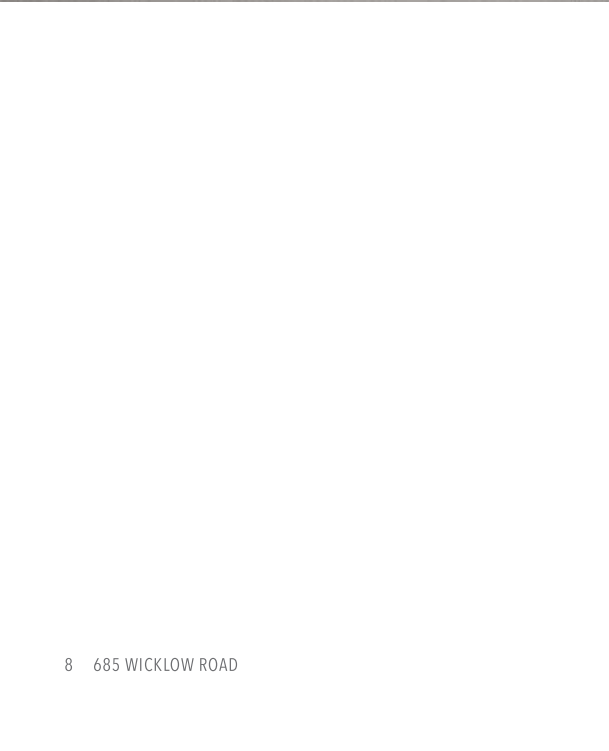
4 BEDROOM
3.5 BATH

BEAUTIFULLY UPDATED 4-BEDROOM, 3.5 BATH COLONIAL NESTLED ON A SPECTACULAR 0.41- ACRE LOT.

- Beautifully updated kitchen with refinished cabinetry, quartz countertops, designer backsplash, updated sink, new cooktop and new high end refrigerator.
- Kitchen has a large breakfast area and opens to the family room.
- Living room with a fireplace is located off of the kitchen.
- Separate Dining room with large windows to the front yard.
- Glass sliding doors in the kitchen, family room, and living room provide easy access to the patio and beautifully landscaped grounds.
- 4 generously sized bedrooms upstairs, including a primary suite with updated en-suite bath.
- A 2nd full bath with double sinks and a tub/shower combination serves the additional bedrooms.
- Fully finished basement with a large rec room, a workout room, office/5th bedroom and a full bathroom.
- Breathtaking backyard with expansive green space, mature landscaping, and endless possibilities for entertaining, recreation, or relaxation.
- Lovingly maintained and thoughtfully updated, this home is available only due to a job relocation out of state.
- Located minutes from Metra, highway, parks, shopping, and dining, and served by highly rated Deerfield Districts 109 and 113.











DEERFIELD BOASTS THE BEST OF BOTH WORLDS - THE AMENITIES AND CONVENIENCES OF CITY LIVING WITH THE CHARM OF A SMALL TOWN.

Touting a variety of housing options, Deerfield offers condominiums, townhomes, and single-family homes in a wide range of architectural styles and prices.

When it comes to amenities, Deerfield checks all the boxes. Deerfield Square includes an assortment of shops, restaurants, and boutique workout studios, while the Sachs Recreation Center offers an indoor pool, tennis courts, gymnasiums, fitness classes, and more. Another popular attraction is the Deerfield Historic Village, where residents and visitors can explore buildings dating back to the 1800s.

The community is home to Deerfield High School, which ranks among the top high schools in Illinois, according to *U.S. News and World Report*.

With two Metra stations and proximity to the Tri-State Tollway and Edens Expressway, Deerfield puts residents within easy reach of downtown Chicago, O'Hare International Airport, and numerous corporate headquarters.



MELISSA NEWMAN

(773) 251-4130

MELISSANEWMAN@ATPROPERTIES.COM


Melissa
NEWMAN
exceeding expectations

@properties®

CHRISTIE'S
INTERNATIONAL REAL ESTATE