

687 S SPRING ROAD  
ELMHURST





#### ROOM DIMENSIONS

LIVING ROOM : 10' × 21'

KITCHEN : 11' × 18'

PRIMARY BEDROOM : 9' × 13'

SECOND BEDROOM : 9' × 10'

THIRD BEDROOM : 9' × 10'

FOURTH BEDROOM : 9' × 14'

FIFTH BEDROOM : 10' × 12'

RECREATION ROOM : 16' × 30'

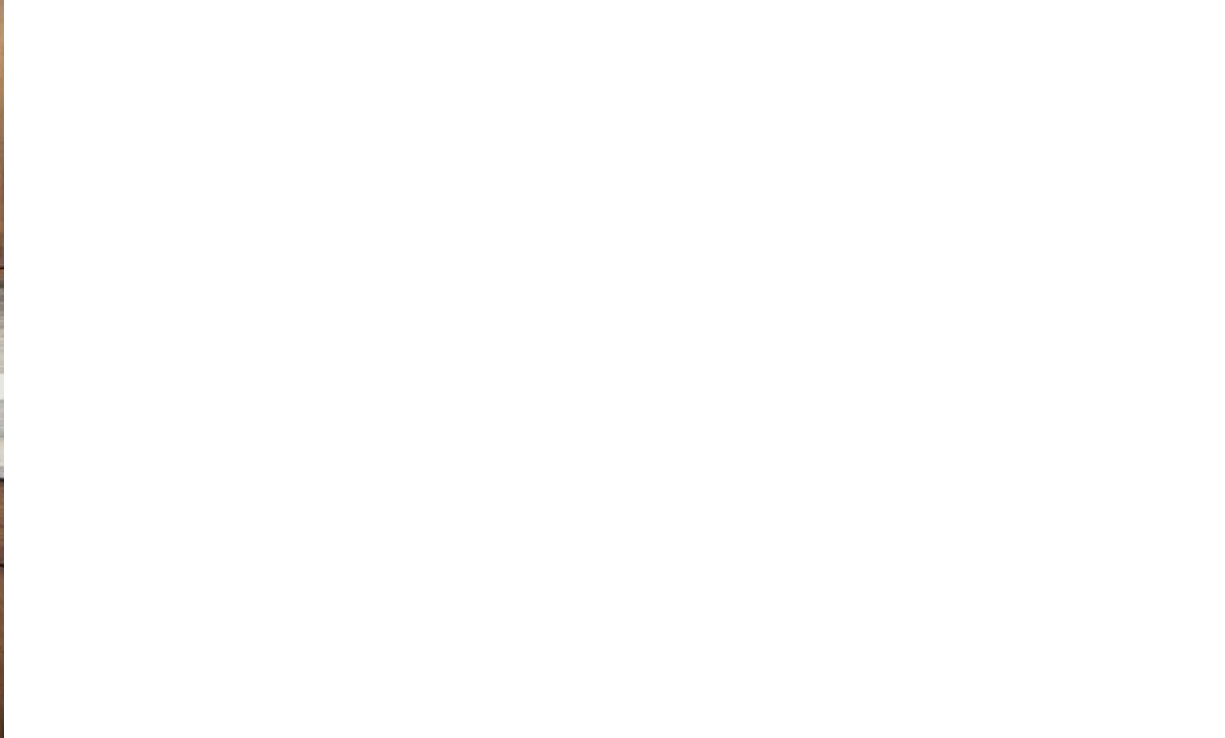
5 BEDROOM

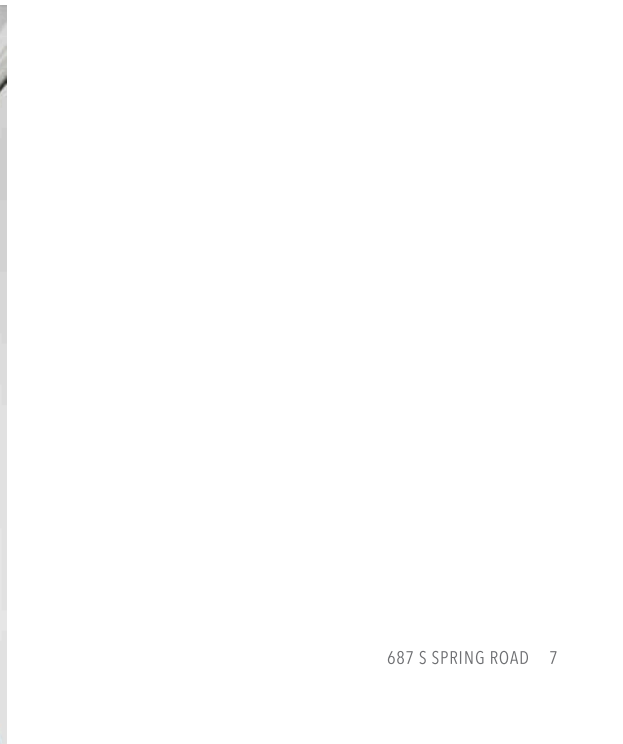
3 BATH

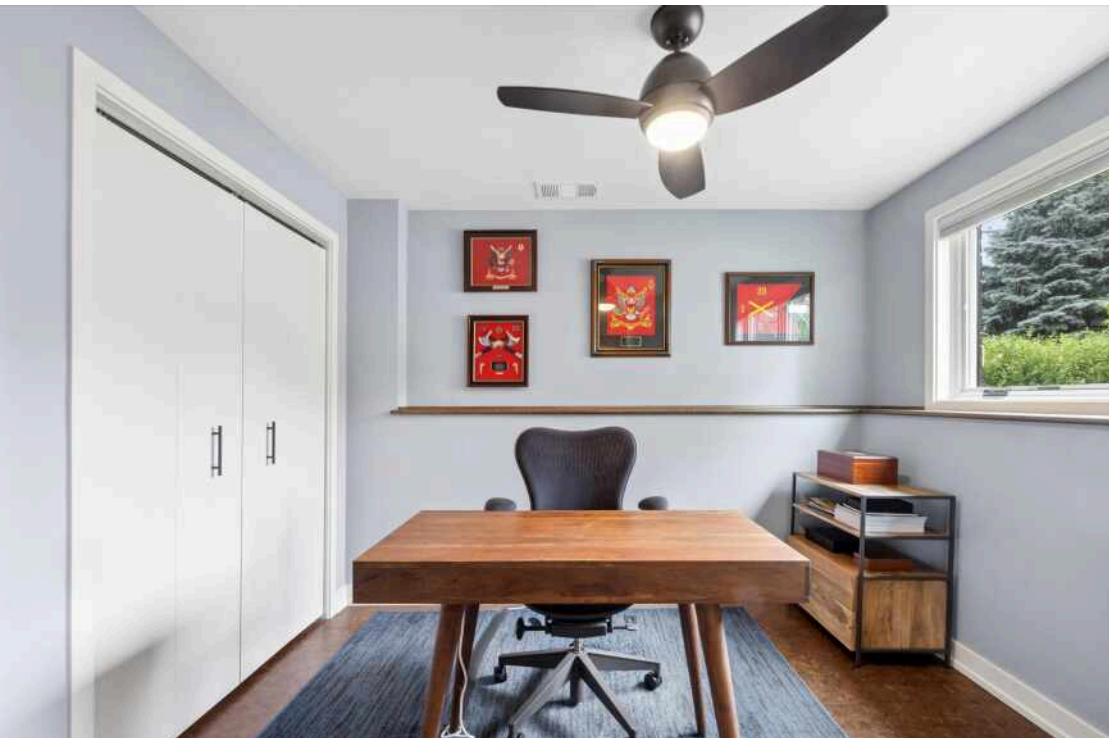
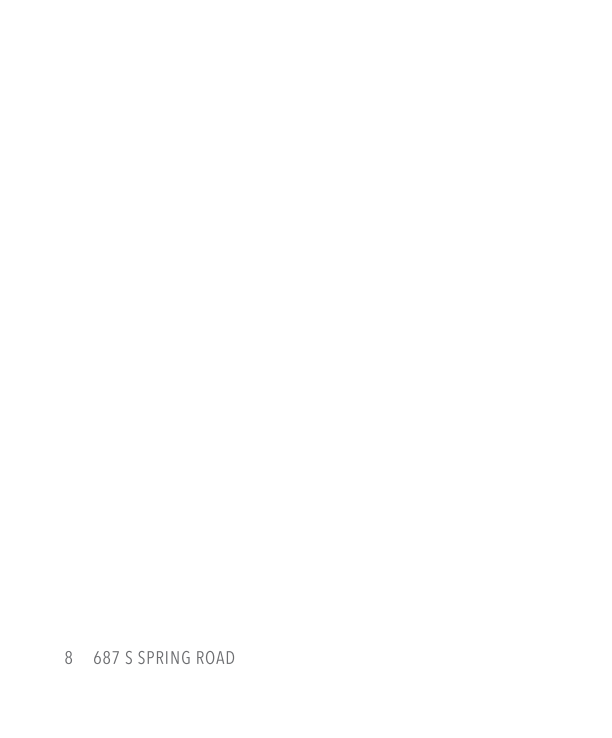
TAXES: \$8,015

## MODERN PRAIRIE MASTERPIECE STEPS FROM SPRING ROAD

Mind-blowing complete re-do by Kristin Petro Interiors. Definitely a showstopper. It's a soft prairie style vibe. Solid walnut cabinets. Built-in banquette in kitchen. White oak hardwood floors. Private bathroom in primary bedroom. Super flexible floor plan with three upper level bedrooms and two in the lower level. Three bathrooms in all. Conveniently situated within an easy walk to the Spring Road business district and prairie path. Serviced by the extraordinarily popular Lincoln elementary school. This one's a 10. Close in time for school.







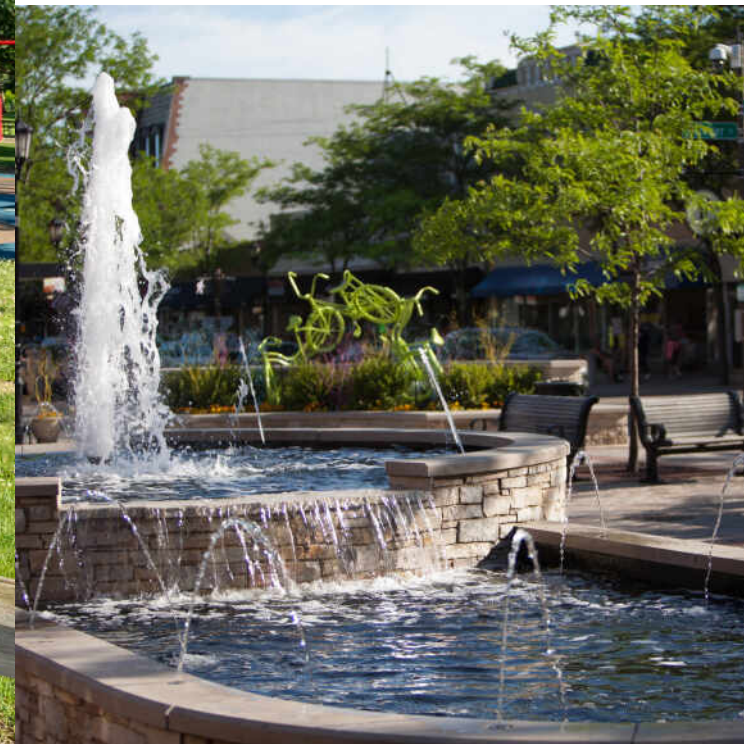


1st Floor



2nd Floor





## ELMHURST IS A VIBRANT COMMUNITY WITH A WEALTH OF SHOPS, RESTAURANTS, AND ARTS AND CULTURE.

Elmhurst's award-winning park district maintains nearly 30 parks as well as trails, playgrounds, and athletic facilities. At the center of town is Wilder Park, where locals will also find the community's public library, Wilder Mansion, the Wilder Park Conservatory, and the Elmhurst Art Museum. The museum has been named the "Best Suburban Art Museum in Chicago" by *Chicago* magazine and is adjacent to the McCormick House, a rare single-family home designed by Mies van der Rohe.

Elmhurst is also home to the Elmhurst History Museum, Elmhurst Symphony Orchestra, GreenMan Theatre Troupe, Elmhurst Choral Union, and Elmhurst Children's Theatre.

In addition to its many cultural offerings, the city is known for its bustling shopping and dining scene. Elmhurst's City Centre boasts a movie theater, an assortment of eateries and boutiques, and community events such as the annual Rock the Block Party. The Elmhurst Express Trolley connects downtown Elmhurst with the community's other shopping areas, including the Spring Road and York & Vallette business districts. The Trolley is free and runs during the summer and holiday season.

Residents come together for dozens of community events that are held throughout the year. The Memorial Day Parade has taken place every year since its start in 1918 and the annual St. Patrick's Day Parade is the third largest in the Chicagoland area.

With its proximity to O'Hare International Airport, the Tri-State Tollway, and the Eisenhower Expressway, Elmhurst offers convenient transportation options. A Metra train station is also located in town, providing easy access to downtown Chicago.





## **BRYAN BOMBA**

(630) 286-9242

BBOMBA@ATPROPERTIES.COM

WWW.BOMBAMANCINI.COM

# **BOMBA & MANCINI**



## **PAUL MANCINI**

(630) 267-1899

PMANCINI@ATPROPERTIES.COM

WWW.BOMBAMANCINI.COM