

6926 HAWK DRIVE
SCHERERVILLE





ROOM DIMENSIONS

LIVING ROOM : 12.9' × 25.1'

FAMILY ROOM : 13.11' × 22.9'

DINING ROOM : 11.8' × 9.8'

KITCHEN : 11.1' × 10.7'

PRIMARY BEDROOM : 15.11' × 11.11'

SECOND BEDROOM : 14.9' × 9.6'

THIRD BEDROOM : 11.1' × 10.1'

FOURTH BEDROOM : 15.2' × 7.9'

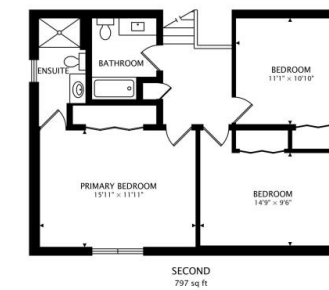
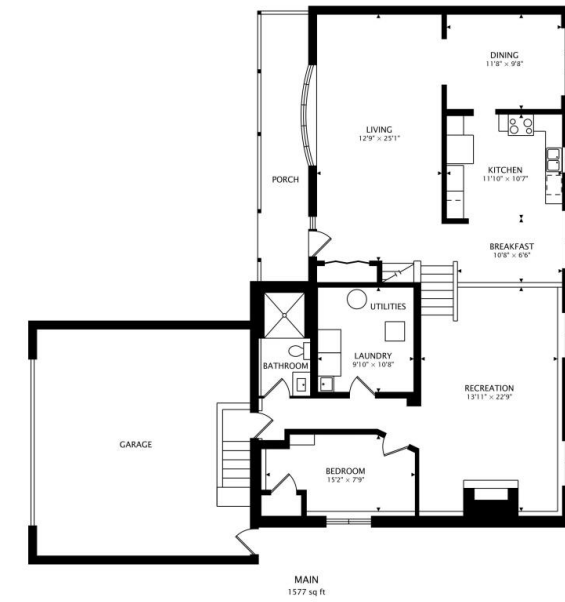
4 BEDROOM

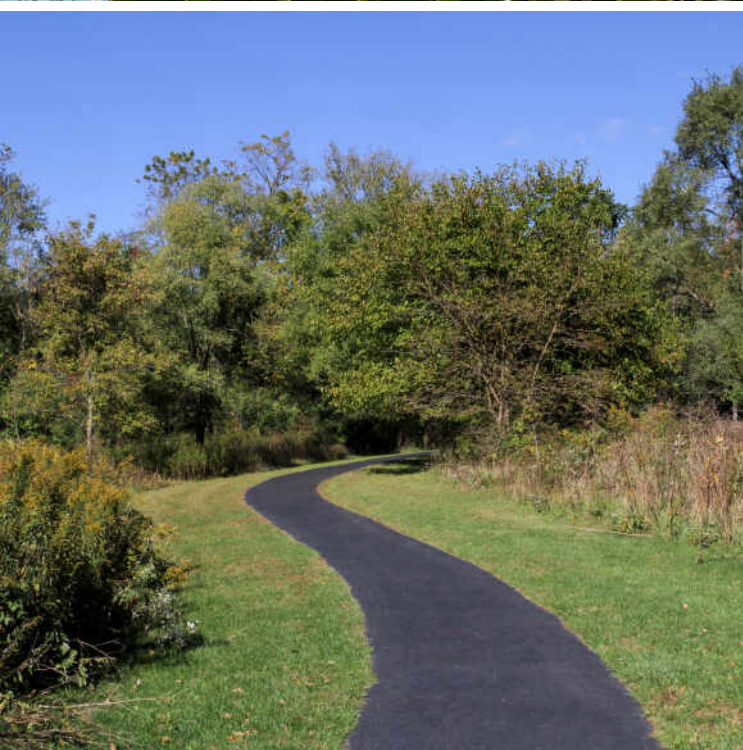
3 BATH

TAXES: \$2,723

Welcome home to the one you've been searching for!!!! This well-cared-for 4-bedroom, 3-bath home offers a layout that's both functional and inviting. The primary bedroom includes its own private bath, while the spacious living room and separate dining room provide plenty of room for everyday living and hosting guests. The kitchen features newer stainless steel appliances that stay, making it easy to settle right in. The lower level offers a comfortable family room with a fireplace and newer carpet, along with an additional bedroom or office space. A lower-level bathroom has been refreshed with an updated vanity and flooring. You'll also appreciate the finished laundry room with access to a clean crawlspace for extra storage. Sliding doors off the kitchen lead to a backyard built for enjoyment, complete with an in-ground pool and slide, newer fencing, and a shed. Whether entertaining or relaxing, this outdoor space delivers. The 2.5-car garage includes a heater, offering added convenience for storage or year-round projects. Located close to shopping, dining, and entertainment, this home combines comfort, space, and a convenient location. A great opportunity you won't want to miss.







SCHERERVILLE HAS EARNED THE DISTINCTION OF BEING NAMED ONE OF THE “100 BEST PLACES TO LIVE IN THE U.S.” BY *MONEY* MAGAZINE.

Home to the “Shops On Main,” the town has emerged as a popular shopping destination and is committed to supporting local business owners.

Schererville also has over 20 parks with trails, offering residents plenty of recreational opportunities. Situated near downtown, Redar Park spans 9.2 acres and features a playground, softball field, and basketball courts. The park is also close to Pennsy Greenway Trail and Schererville Skate Park. Meanwhile, residents can take furry friends to Perry Ferrini Dog Park in the southern part of town.

Known for its strong sense of community, Schererville brings residents together for various annual events such as movies in the park, summer concerts, and a craft show. Additional events are held at the Dyer-Schererville branch of Lake County Public Library.

Dubbed the “Crossroads of the Nation,” Schererville has numerous travel routes. Residents have access to I-80 and I-94, as well as I-65 and U.S. Highways 41 and 30. Gary/Chicago International Airport in Gary provides commercial air service, but residents typically fly out of O’Hare International Airport or Midway International Airport.



NOTES

[illegible]



JENNIFER RODRIGUEZ

2196800300

2194400070

JRODRIGUEZ@ATPROPERTIES.COM



All specifications, features, designs, price, assessments, taxes and materials are subject to change without notice. Depicted floor plans and architectural renderings are only an artist's impression.

