

**6N577 HERITAGE COURT**  
ST. CHARLES







## ROOM DIMENSIONS

LIVING ROOM : 21' × 13'  
DINING ROOM : 16' × 13'  
DEN/OFFICE : 13' × 11'  
KITCHEN : 14' × 13'  
EATING AREA : 15' × 11'  
FAMILY ROOM : 20' × 15'  
LAUNDRY ROOM : 18' × 6'  
PRIMARY BEDROOM : 18' × 13'  
2ND BEDROOM : 13' × 11'  
3RD BEDROOM : 13' × 13'  
4TH BEDROOM : 13' × 13'  
5TH BEDROOM : 16' × 14'  
OFFICE : 14' × 12'

5 BEDROOM

3.1 BATH

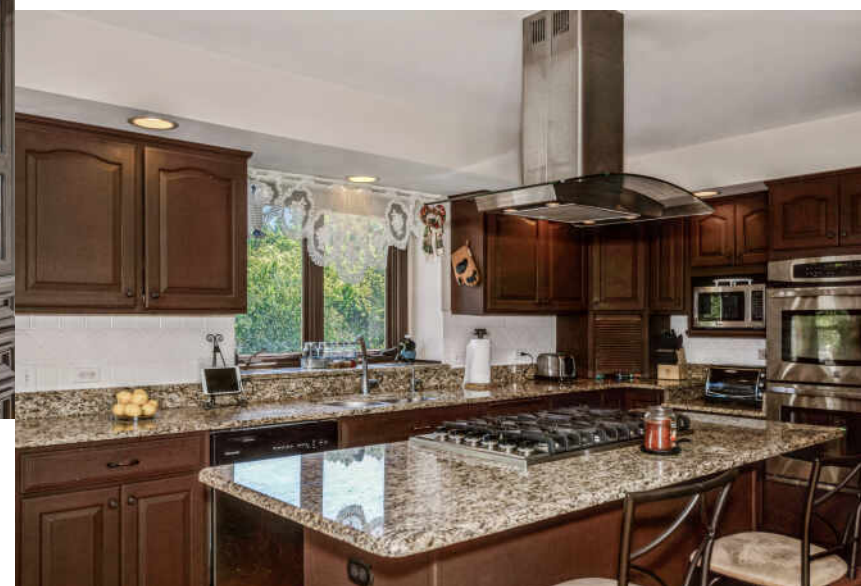
TAXES: \$11,452

## WELCOME TO 6N577 HERITAGE CT

An amazing opportunity to own this beautiful home located on one of the most desirable and rarely available 1.4 acre lots in a sought after cul-de-sac with spectacular views of the nature preserve area and Ferson Creek! Enjoy your private and serene view from your large deck that is perfect for spending time with family and friends. As soon as you enter through the front door you will feel right at home! Office/den with french doors. The spacious kitchen overlooks the family room and breakfast area and features a kitchen island, granite countertops, stainless steel appliances and a pantry closet. The family room features a fireplace with built-in shelving and new skylights with solar operated shades and allows for so much natural light. Separate laundry room located on the main level. The primary bedroom features an ensuite full bathroom with dual vanities, jacuzzi tub and a walk-in shower. The full finished walk-out basement provides for additional space boasting a second office with built-ins, 5th bedroom, full bathroom, recreation room, storage area, and a second washer/dryer. THIS HOME HAS IT ALL!

- New roof with high-end 50 year presidential shingles (2020)
- One new A/C (2021)
- Two brand new furnaces (2020)
- Updated chandelier and light fixtures (2020)
- Stainless steel appliances (2016-2018)
- Newer carpet on the entire second level (2018)
- Deck (2018)
- Interior paint (2017)
- Entry door (2016)
- Dentil crown molding

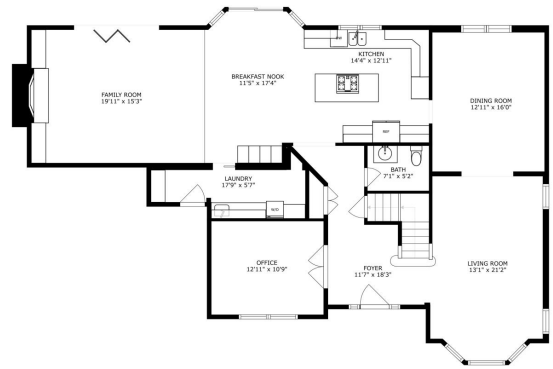




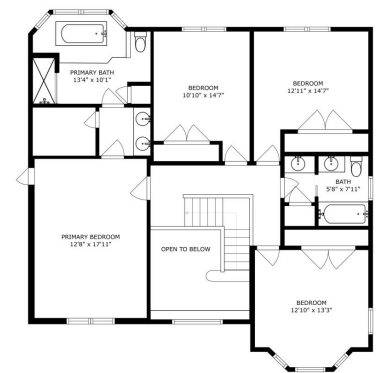




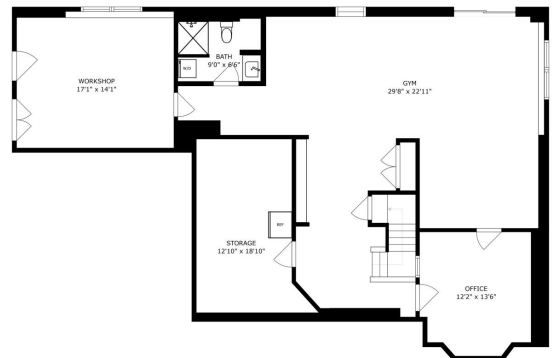




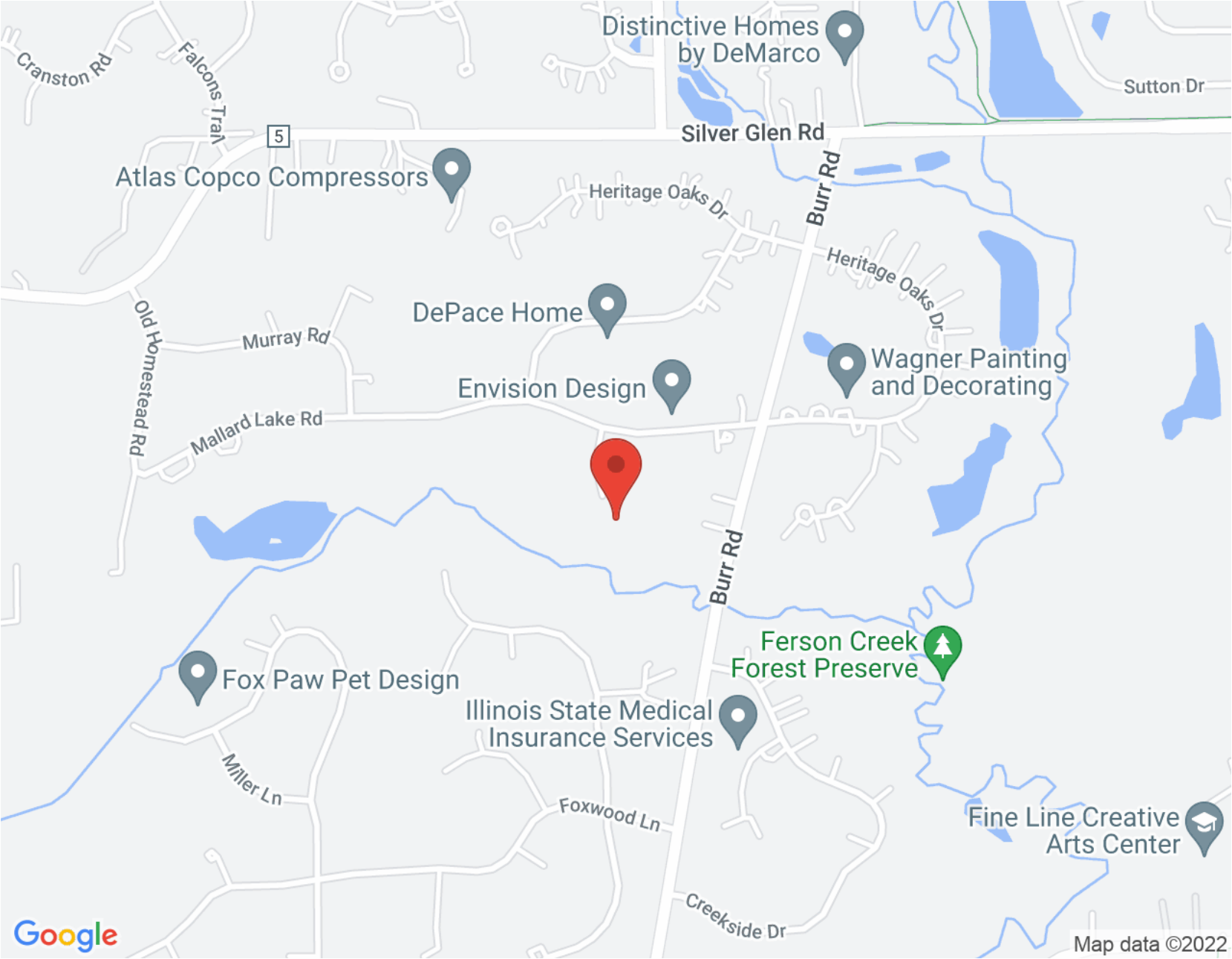
SIZES AND DIMENSIONS ARE APPROXIMATE, ACTUAL MAY VARY



SIZES AND DIMENSIONS ARE APPROXIMATE, ACTUAL MAY VARY



SIZES AND DIMENSIONS ARE APPROXIMATE, ACTUAL MAY VARY



NOTES \_\_\_\_\_

\_\_\_\_\_

\_\_\_\_\_

\_\_\_\_\_

\_\_\_\_\_

\_\_\_\_\_

\_\_\_\_\_

\_\_\_\_\_

\_\_\_\_\_

\_\_\_\_\_

\_\_\_\_\_



## NANCY FUNTEAS

(630) 965-0470

NANCYFUNTEAS@ATPROPERTIES.COM



CHRISTIE'S  
INTERNATIONAL REAL ESTATE

6N577HERITAGECT.INFO