

6 BURNING TREE ROAD

ROLLING MEADOWS





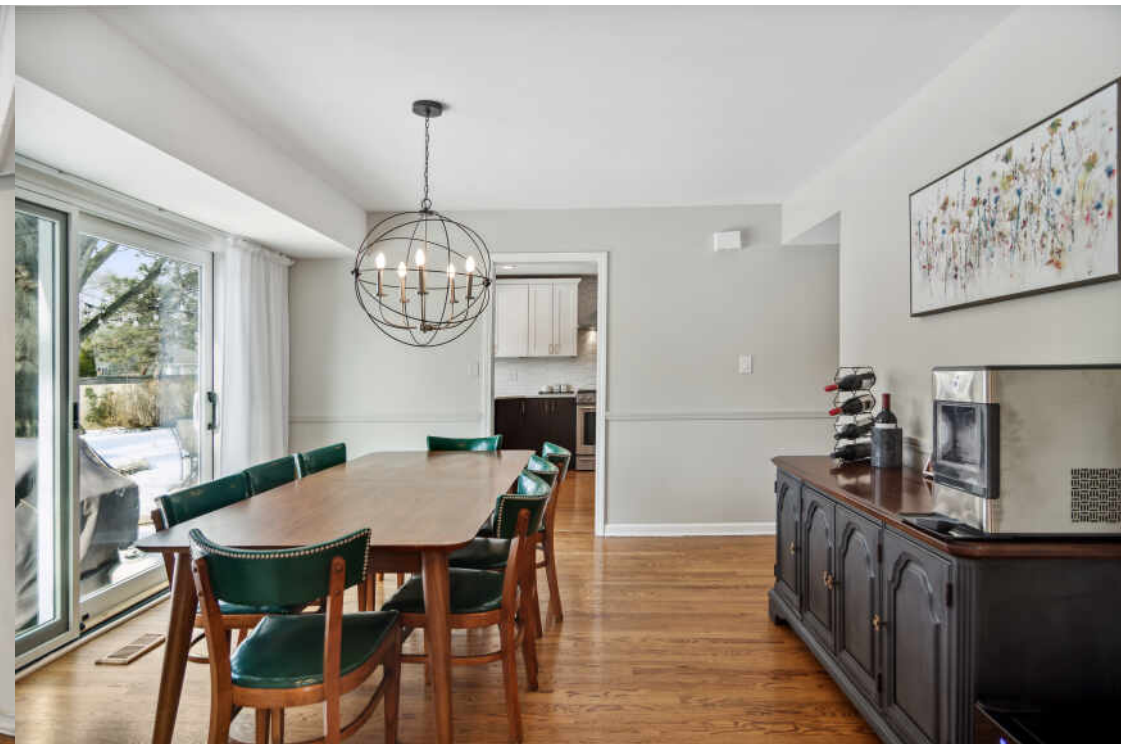
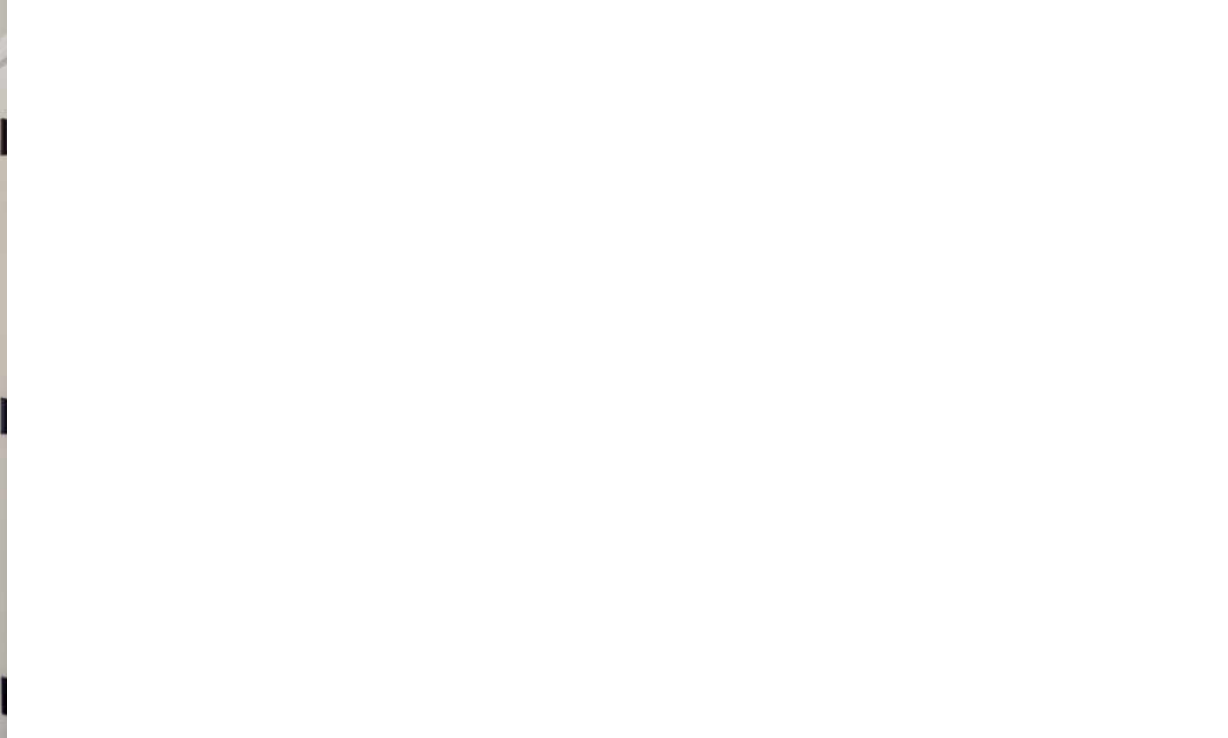
ROOM DIMENSIONS

FOYER : 14' × 9'
LIVING ROOM : 25' × 13'
FAMILY ROOM : 23' × 19'
DINING ROOM : 12' × 12'
KITCHEN : 11' × 9'
EATING AREA : 11' × 9'
PRIMARY BEDROOM : 25' × 17'
SECOND BEDROOM : 14' × 10'
THIRD BEDROOM : 13' × 10'
FOURTH BEDROOM : 14' × 12'
LAUNDRY ROOM : 12' × 6'

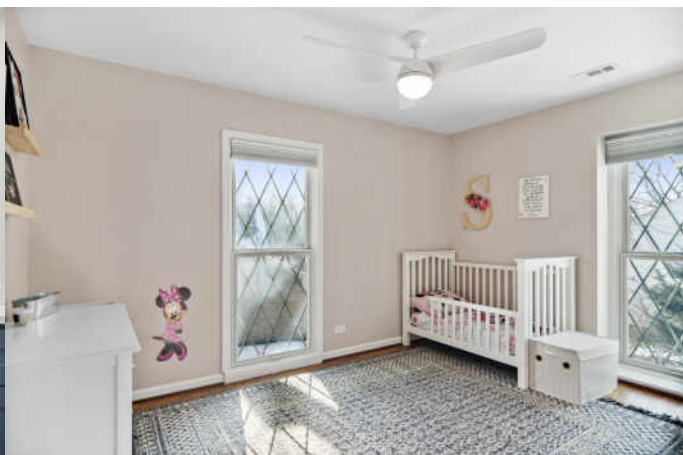
Stepping inside this updated home, located in a cul-de-sac and in the sought after Creekside subdivision, you are about to be wowed! The inviting foyer is perfect for greeting all your guests. Enjoy a nice sized living room with stunning hardwood floors and plenty of windows bring in ample natural light. A separate dining room is perfect for the eat-in kitchen table or a more formal setting. You don't want to miss this fully updated kitchen ('21) with gorgeous custom cabinetry, stainless steel appliances, floor to ceiling pantry, breakfast bar with additional seating all with quartz countertops. This stunning kitchen opens to the family room with a brick, wood burning fire place and gorgeous built-ins. Step out to your amazing backyard with a large stone patio, mature trees all perfect for entertaining. Main level also offers a nice sized mud room ('20) and half bath ('20). Your luxury master suite awaits you on the 2nd level of this home. Stepping in you will notice the size and extra space for a sitting area or home office, plus another wood burning fire place, plenty of closet space and gleaming hardwood floors. This recently updated master bath ('22) has a double vanity and separate bathroom. Three additional bedrooms, all with hardwood floors, plus an updated full bath ('21) complete this 2nd level living. Don't forget the basement with plenty of extra space, storage and more! Additional updates include: sliders ('20), roof ('18), water heater ('17), drain tiles ('18), windows main level ('20), humidifier ('22), 200 amp electrical panel ('20), refinished hardwood floors ('19).

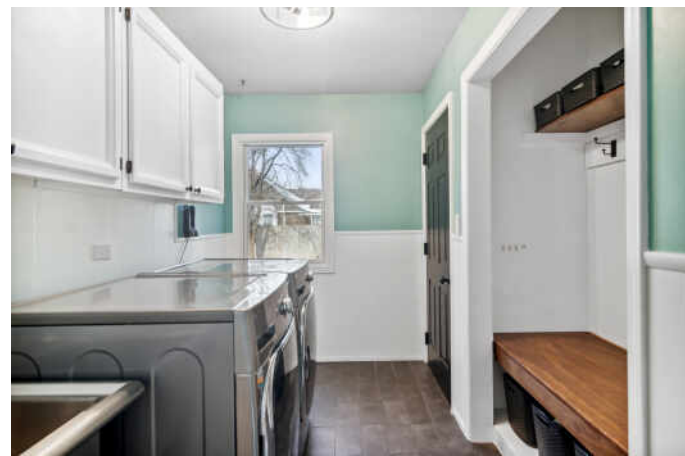


4 BEDROOM
2.1 BATH
TAXES: \$9,749
ASSESSMENTS: \$700 / YEAR









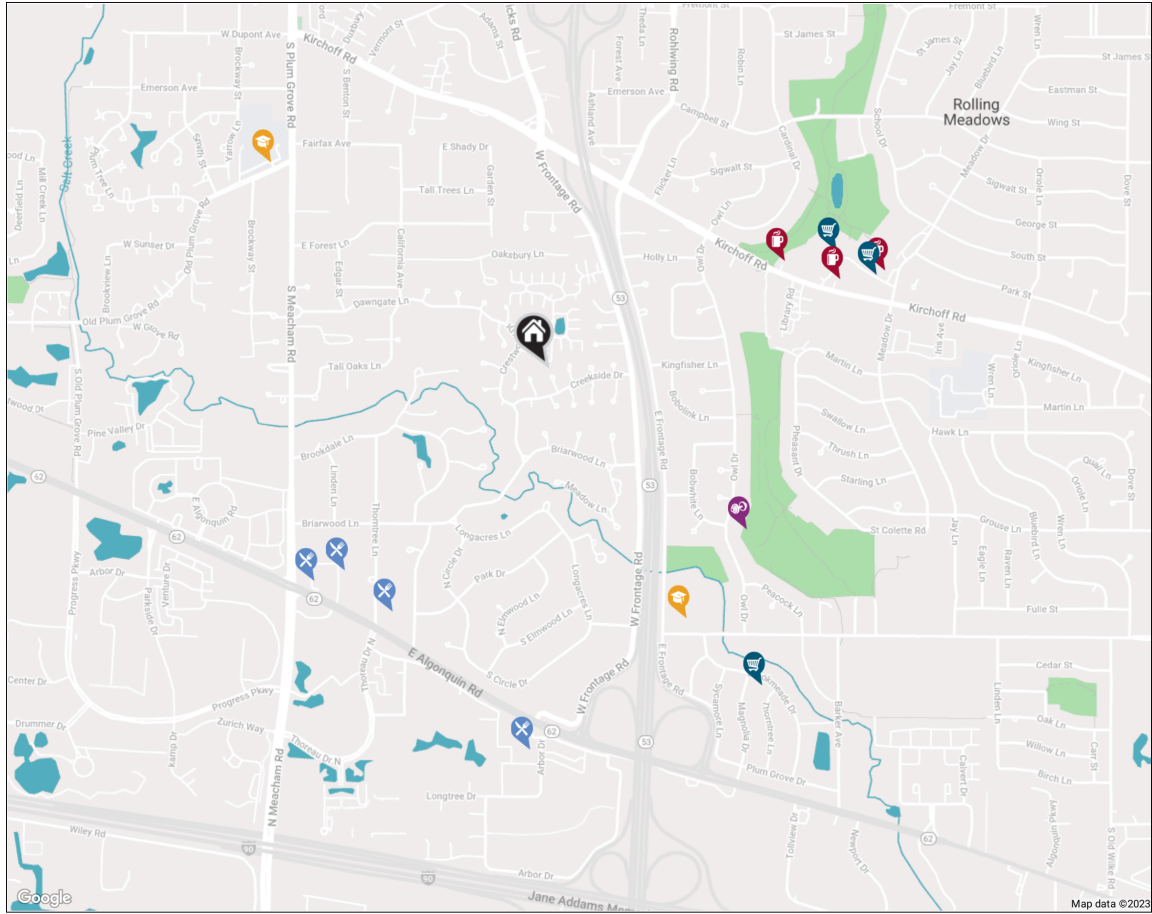


**ROLLING MEADOWS HAS BEEN DUBBED
“A GREAT PLACE TO CALL HOME” BY
LONGTIME RESIDENTS AND NEWCOMERS
ALIKE.**

Nestled in the Golden Corridor near the Woodfield Mall and Arlington International Racecourse, the city is also close to O’Hare International Airport and known for its excellent public transportation and expressway system.

Rolling Meadows has many parks and recreational areas and is home to various corporate headquarters and businesses. The community maintains a quintessentially suburban lifestyle. Throughout the year, residents enjoy parades, block parties, and various local events, including the annual Downtown Block Party, which brings community members together to celebrate the start of summer.

A growing community, Rolling Meadows continues to appeal to homebuyers by developing additional housing and renovating public spaces.



RESTAURANTS

Chicago Prime Steakhouse
1444 EAST ALGONQUIN ROAD, 0.7 MI

Culver's
1410 EAST ALGONQUIN ROAD, 0.7 MI

Coach House Bar & Grill
1626 EAST ALGONQUIN ROAD, 0.7 MI

Moretti's Schaumburg
1893 WALDEN OFFICE SQUARE, 0.9 MI

COFFEE SHOPS

Dunkin'
3350 KIRCHOFF ROAD, 0.6 MI

McDonald's
3140 KIRCHOFF ROAD, 0.7 MI

Starbucks
3000 KIRCHOFF ROAD, 0.8 MI

SHOPPING

JC Licht Benjamin Moore Paint &
Decor Store Rolling Meadows
3230 KIRCHOFF ROAD, 0.7 MI

Jewel-Osco
3000 KIRCHOFF ROAD, 0.8 MI

Dream Kitchen and Bathrooms
3403 BROOKMEADE DRIVE, 0.9 MI

HEALTH CLUBS

Rolling Meadows Park District:
Nelson Sports Complex
3900 OWL DRIVE, 0.6 MI

SCHOOLS

Central Road Elementary School
3800 CENTRAL ROAD, 0.7 MI

Plum Grove Junior High School
2600 PLUM GROVE ROAD, 0.8 MI

NOTES



AMY DIAMOND

847.497.0230

AMY@DEALWITHDIAMOND.COM

DEALWITHDIAMOND.COM



CHRISTIE'S
INTERNATIONAL REAL ESTATE

6BURNINGTREE.INFO