

6 ENNIS COURT

CARY



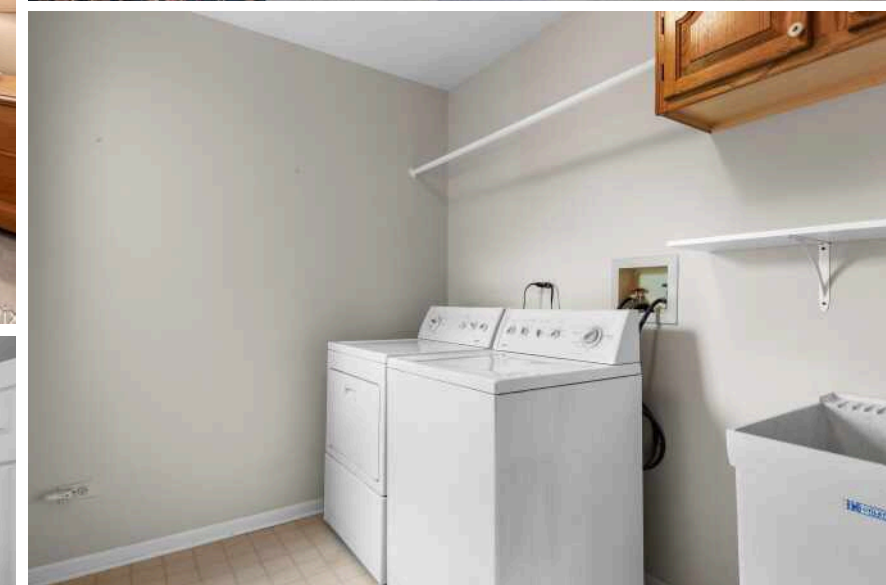


3 BEDROOM
2 BATH

LOCATED IN HIGHLY DESIRABLE CARY, THIS STRIKING 3 BEDROOM, 2.5 BATH RANCH-STYLE HOME ON A PREMIER OVERSIZED LOT CHECKS ALL THE BOXES!

Expect to be impressed with its desirable finishes and sought-after floor plan. This home has been meticulously maintained from top to bottom. The pristine kitchen has upgraded brand-new stainless steel appliances, and opens directly to the family room and dining room. The primary suite is generous in size including a large, newly-upgraded en-suite bathroom with a double vanity and spa-caliber shower. Easy living on the main floor with tons of flexibility and great living space including a welcoming foyer, dining room, family room, laundry room, and so much more. Details include tons of unobstructed windows, hardwood floors, great ceiling heights, and an enclosed porch. Picturesque outdoor space includes a sizable deck off of the back of the home, and a large yard that has been professionally landscaped. An attached 2 car garage and fantastic storage throughout complete this home. All of this on a great cul-de-sac street with easy access to all that Cary has to offer, including walking/biking trails, parks, retail, and dining to name a few!







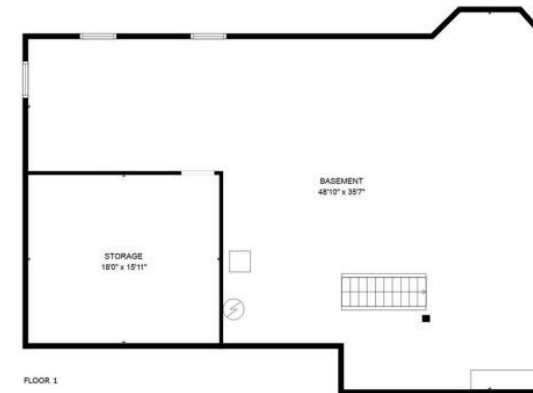
CARY IS A COMMUNITY ON THE MOVE.

Residents can bike, hike, canoe, kayak, cross country ski, skate, and golf at one of the village's three country clubs. There are also sports fields, playgrounds, parks, the Fox River, and popular Hollows Conservation Area.

A charming downtown, plentiful shopping, recreational areas, and a Metra station are just a few reasons why residents love this McHenry County village.

The Metra station is on the site of Cary's first railway station built in 1863. The railroad played a key role in Cary's evolution from a farming community to the suburb it is today. The railroad enabled farmers to sell their produce and pickles to Chicago and St. Louis buyers, expanding the local economy.

A range of housing is available including single-family homes, townhomes, and apartments.



TOTAL: 1756 sq. ft
 BELOW GROUND: 0 sq. ft, FLOOR 2: 1756 sq. ft
 EXCLUDED AREAS: BASEMENT: 1216 sq. ft, STORAGE: 286 sq. ft, GARAGE: 441 sq. ft,
 FIREPLACE: 10 sq. ft
 WALLS: 211 sq. ft

FLOOR PLAN CREATED BY CUBICASA APP. MEASUREMENTS DEEMED HIGHLY RELIABLE BUT NOT GUARANTEED.



EMMA KLEKER

CHICAGO HOME PARTNER

972.890.1283

EMMAKLEKER@ATPROPERTIES.COM



All specifications, features, designs, price, assessments, taxes and materials are subject to change without notice. Depicted floor plans and architectural renderings are only an artist's impression.

