

7038 LITTLE PAW PAW LAKE ROAD
COLOMA





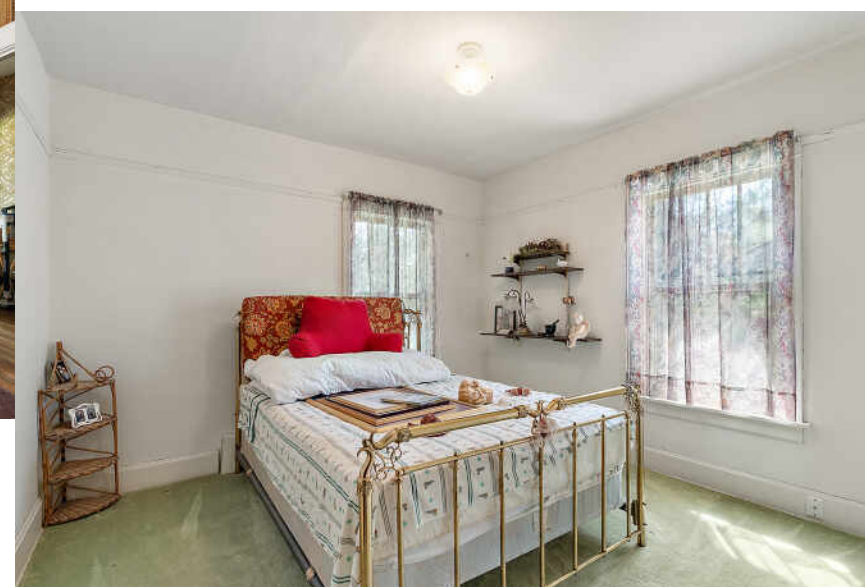
ESCAPE THE ORDINARY!

Occasionally, a home presents itself to the marketplace that provides a way of life as beautiful as it is rare. Traditional in flavor and design. Boasting nearly 15 acres, 5 bedrooms, 3 baths, an oversized 2 car garage, pole barn and pastures that could be brought back to life.

Discover the wonderful character of this home. The interior is all about simple lines and a gracious floor plan, where more style equals more substance. Home is priced based on updates needed as well as the potential it affords to a buyer with a vision.

Now add outstanding exterior space. Home sits back from the road, across the street from Little Paw Paw Lake, tucked in a lovely setting. Perfect for a hobby farm with two varieties of blue berries, open spaces, partially wooded with trails, an older 30x40 pole barn. Strategically located 2 miles to Paw Paw Lake and 1 mile to Little Paw Paw Lake access Coloma schools and 2 hours from Chicago.

5 BEDROOM
3 BATH





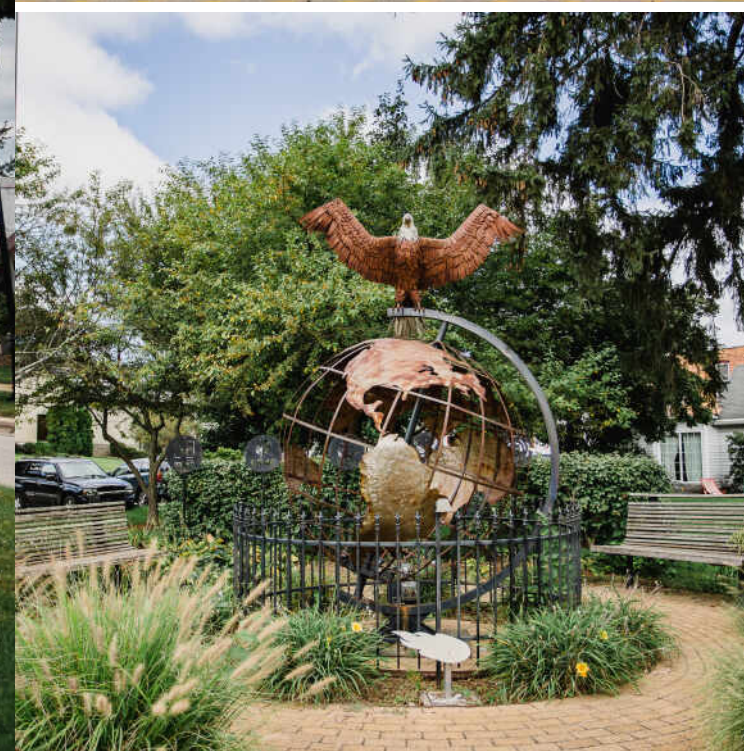
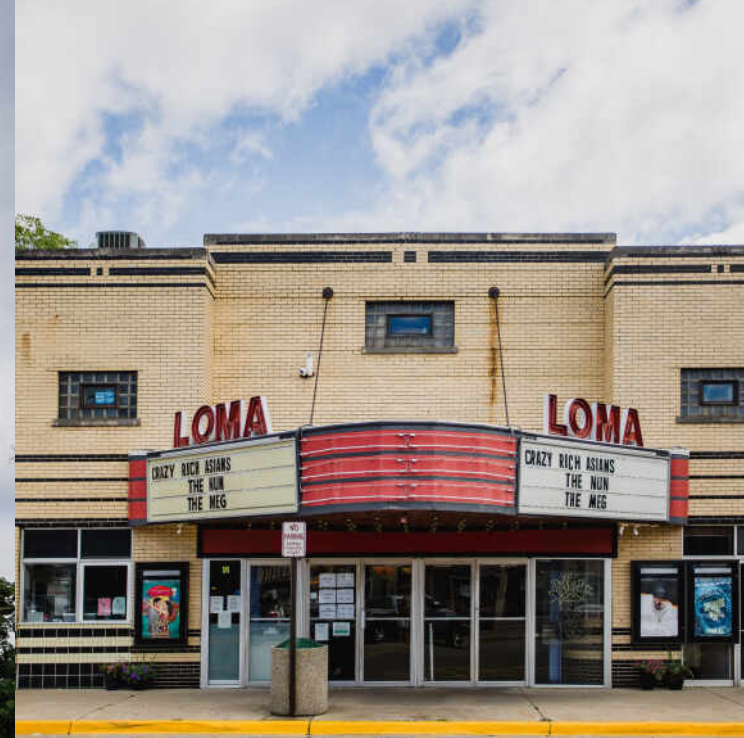
2ND FLOOR



3RD FLOOR



1ST FLOOR



THE THIRD TIME WAS DEFINITELY THE CHARM FOR **COLOMA**, THE CITY IN SOUTHWEST MICHIGAN THAT IS HOME TO A MAJORITY OF THE AREA'S VINEYARDS.

The city was named twice before ultimately settling on Coloma, inspired by the California Gold Rush town.

Incorporated in 1941, the city is part of the Fruit Belt in the Lake Michigan Shore AVA, with rich farmlands made temperate by Lake Michigan and vineyards dating back to 1867. The area produces a variety of fruits such as apples, blueberries, strawberries, cherries, and peaches, which are celebrated annually at the Coloma Glad-Peach Festival. The three-day celebration includes live music, a classic car and motorcycle show, and a parade.

One of the biggest attractions for both locals and visitors is Paw Paw River, where people can fish and rent canoes, kayaks, and paddleboards.



MARK WORTMAN

(269) 876-2929

MARKWORTMAN@ATPROPERTIES.COM

WWW.WORTMANGROUP.COM

WORTMAN

GROUP

@properties | **CHRISTIE'S**
INTERNATIONAL REAL ESTATE

All specifications, features, designs, price, assessments, taxes and materials are subject to change without notice. Depicted floor plans and architectural renderings are only an artist's impression.

