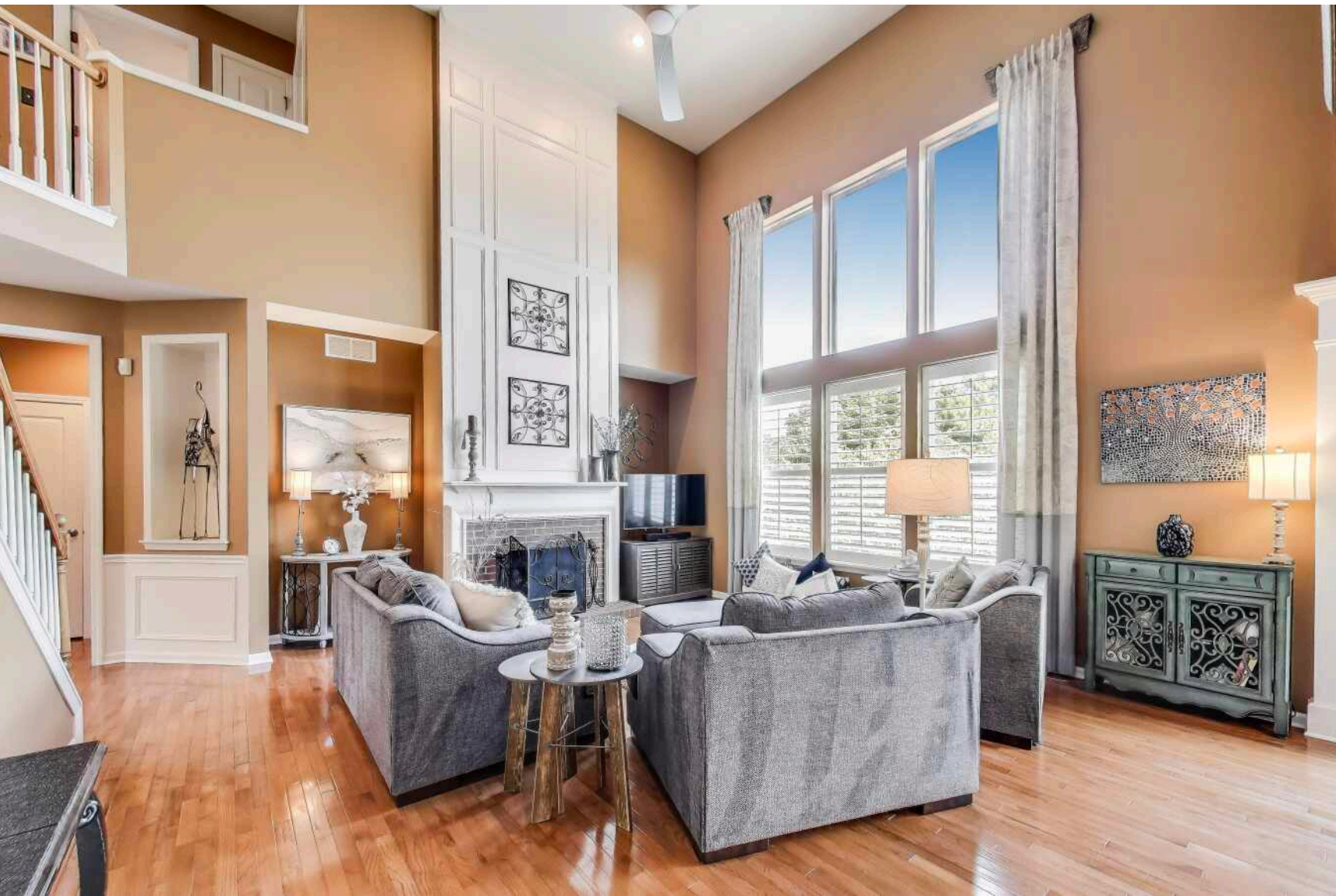


705 PORTER CIRCLE
GRANT'S GROVE | LINDENHURST





ROOM DIMENSIONS

LIVING ROOM : 16' × 11'

DINING ROOM : 18' × 11'

KITCHEN : 17' × 10'

EATING AREA : 17' × 8'

FAMILY ROOM : 19' × 17'

OFFICE : 14' × 11'

PRIMARY BEDROOM : 18' × 15'

SECOND BEDROOM : 13' × 12'

THIRD BEDROOM : 14' × 11'

FOURTH BEDROOM : 13' × 11'

GAME ROOM : 30' × 12'

REC ROOM : 16' × 14'

EXERCISE ROOM : 15' × 10'

4 BEDROOM

2.2 BATH

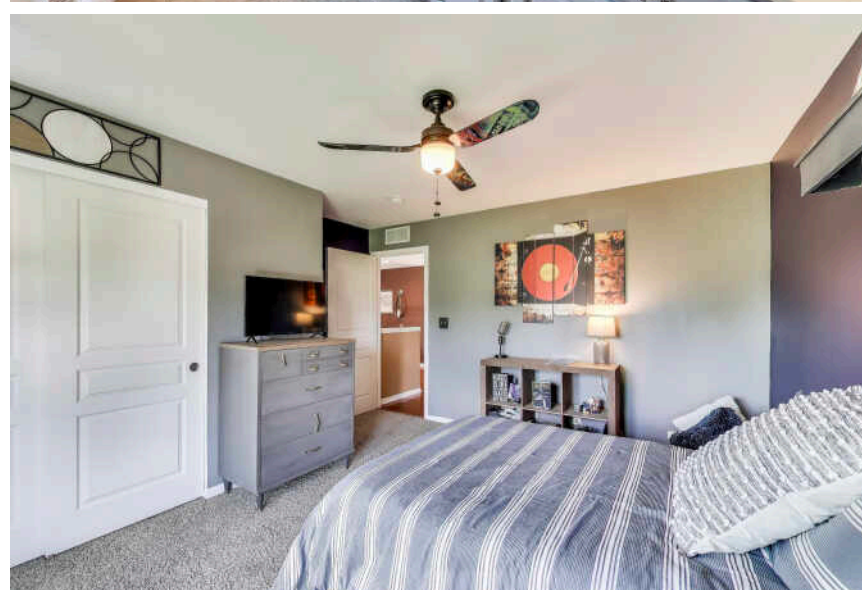
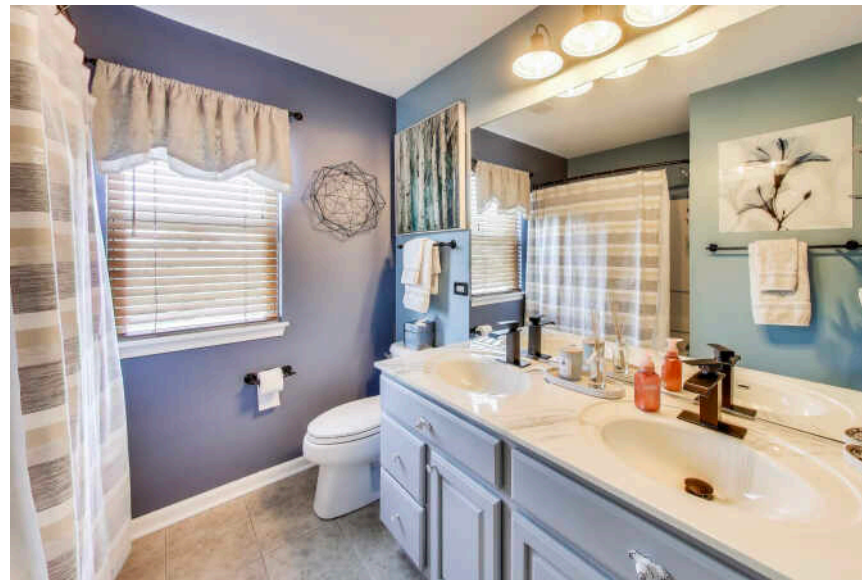
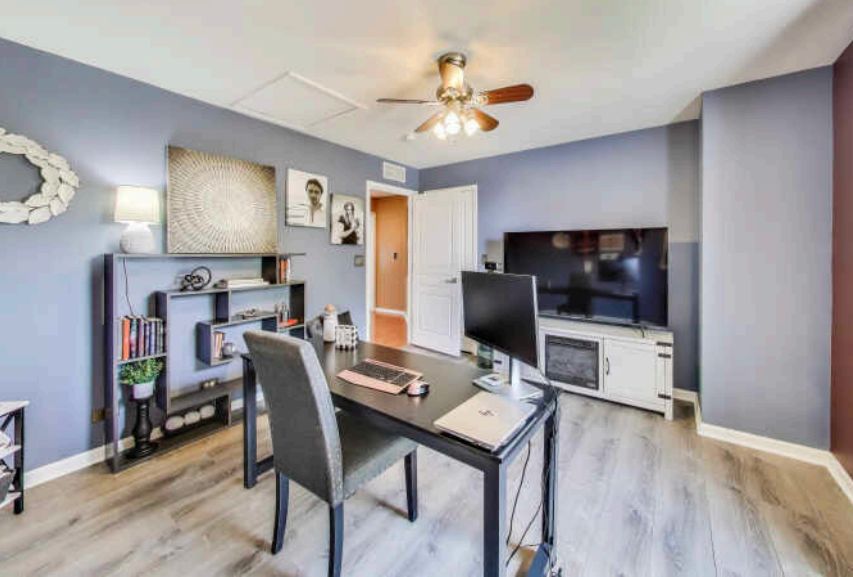
TAXES: \$14,216

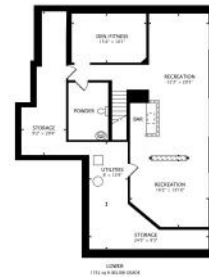
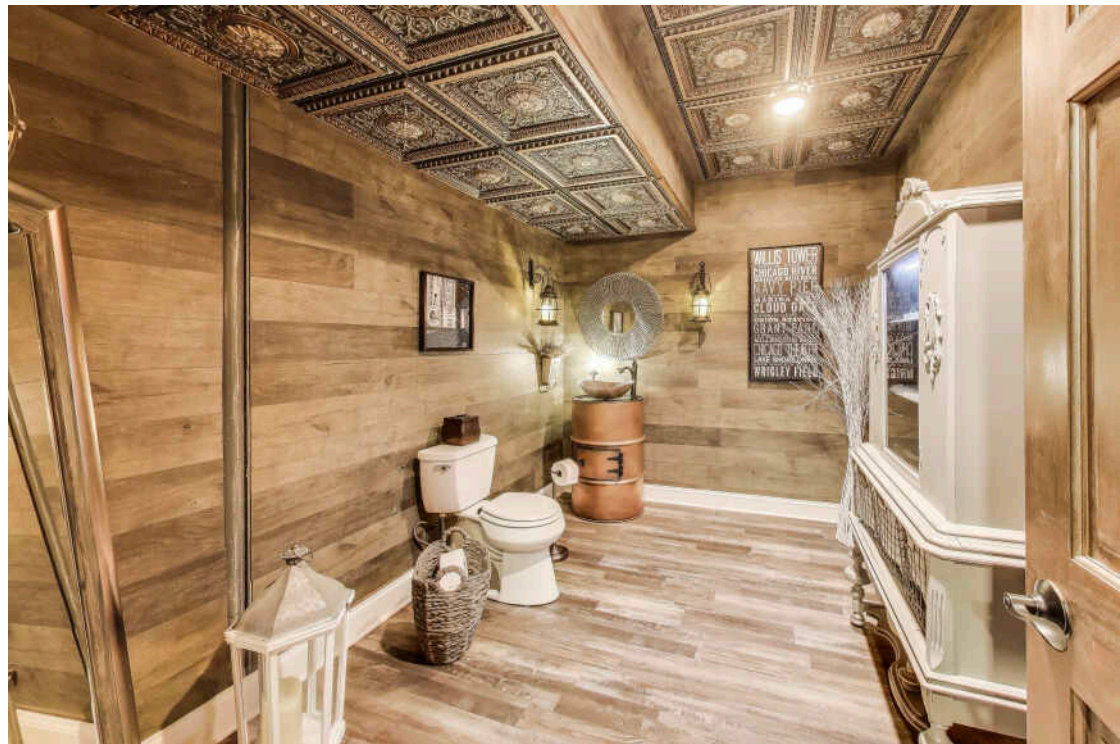
ASSESSMENTS: \$275 / QUARTER

- Well-maintained home offers a spacious and versatile floor plan designed for today's lifestyle.
- Main level dedicated office with French door and chiseled wood flooring.
- Soaring ceilings highlight the two-story family room, which flows seamlessly into the updated kitchen, featuring slate gray cabinetry, custom backsplash, stainless steel appliances, expansive work island, planning desk and a butler's pantry. The adjacent eating area offers sliding doors to the deck, perfect for indoor-outdoor dining.
- Convenient first floor laundry room complete with utility sink and washer/dryer.
- Trayed primary suite boasts LVP flooring and a barn door leading to a spacious bath with separate shower, soaking tub, double sink vanity, commode closet and large walk-in closet.
- Three additional bedrooms and a full bath with dual basin vanity complete the second level.
- The lower level is an amazing expansion of the home's living space! Bathed in natural light from an abundance of English windows, our finished basement offers a rec room with custom bar with beverage refrigerator, game area with wall-mounted TV, exercise room (wall-mounted TV remains!) and a unique half bath featuring a one-of-a-kind drum vanity with copper sink. Want a full bath? Rough plumbing is in place for the future addition of a tub/shower.
- Mature trees and landscaping provide the ideal setting for our backyard oasis - enjoy the deck or relax in the hot tub on the patio.
- AC 2015, Roof 2018; furnace, sump, water heater 2022.
- Great location - Hastings Lake trailhead is across the street from subdivision entrance, and we are only a short drive from downtown Antioch, Lake Villa and the Gurnee Mills shopping area.











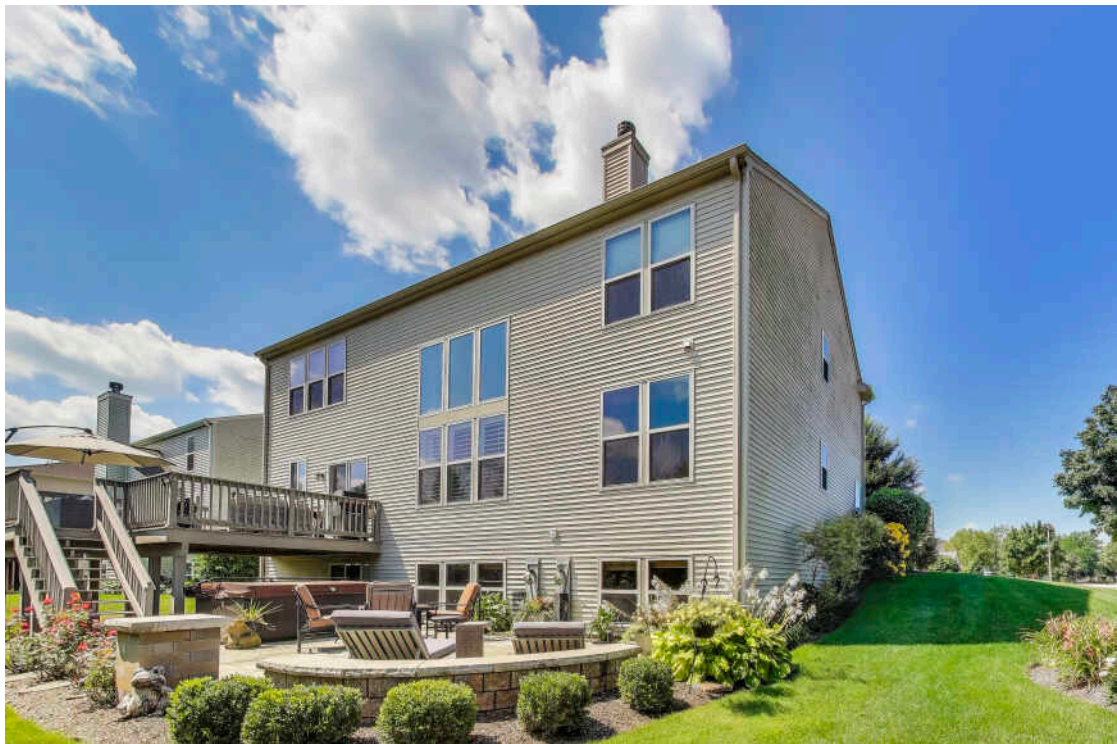
IT'S FITTING THAT **LINDENHURST** WAS NAMED AFTER A TREE

Linden trees surrounded the community's original farmhouse, set among several Lake County Forest Preserves.

Residents here enjoy the great outdoors with plenty of recreational activities – from hiking and biking paths, picnic tables, and dog runs to cross-country skiing and fishing.

Every August, the village celebrates its heritage with Lindenfest, a four-day festival that includes carnival rides, a parade, pageant, food, and live entertainment.

Nearby I-94 and U.S. Route 45 provide access to surrounding suburbs and downtown Chicago.





KIERON QUANE

(224) 206-8813

KQUANE@ATPROPERTIES.COM

